



# SUREBONDER®

BETTER BONDING™  
SINCE 1968



# ADHESIVE GUIDE

FORMULA	APPLICATION	AVAILABLE SIZES	
		DIAMETER	LENGTH
425	<b>APAO</b> adhesive ready for either bead or spray delivery. In bead form use for glue assist projects and in spray form use for foam-to-foam, foam-to-fabric applications and more. 3 Minute Open Time. Color: White	7/16"	10"
		5/8"	15"
601	<b>LOW MELT PACKAGING</b> adhesive for sealing corrugated cartons. Will bond to most porous materials. 5 Second Open Time. Color: Tan	7/16"	10", 15"
		5/8"	10"
		5/8"	8" (Ridged)
		Pellets	
701	<b>FAST-SET PACKAGING</b> adhesive for sealing corrugated cartons. Also great for carpet back seaming, resists cracking at low temperatures. Will bond to most porous materials: wood, paper, and cloth. 15 Second Open Time. Color: Tan  Also available in Pellets, ask for details.	7/16"	10", 15"
		5/8"	2", 10"
		5/8"	8" (Ridged)
		3/4"	2-1/2"
		1"	3"
		1-3/4"	1-3/4"
703	<b>VERY FAST SET PACKAGING</b> adhesive with excellent hot tack, short open time, and good delivery rate. Good adhesion to plain and some coated corrugated packaging materials and paper products. Adheres to a variety of coated and uncoated board stocks. Fast set time. Good heat resistance to prevent pop open during transit. 3-8 Second Open Time. Color: Amber / Tan	7/16"	15"
		5/8"	10"
		Pellets	
707	<b>HIGH PERFORMANCE</b> adhesive for difficult-to-bond substrates. Will adhere to most porous or non-porous materials. Bonds to glass, leather, metal, plastic, magnets, ceramics, wood, ABS, PVC and some vinyls. 30 Second Open Time. Color: Clear	5/16"	4"
		7/16"	10", 15"
		5/8"	10"
		Pellets	
711	<b>FAST SET PACKAGING</b> adhesive for sealing corrugated cartons. Excellent hot tack, short open time and good delivery rate. Good adhesion to plain and some coated corrugated packaging and paper products. 10 Second Open Time. Color: Tan	7/16"	10", 15"
		5/8"	2", 10"
		3/4"	2-1/2"
		1"	3"
		Pellets	
725	<b>GENERAL PURPOSE ALL-TEMP</b> adhesive. Works at either low temp (250° F) or high temp (380° F). Bonds to porous and non-porous substrates. 60 Second Open Time. Color: Clear  Also available in Glue Rolls and Pellets, ask for details.	5/16"	4", 10"
		7/16"	4", 10", 15"
		5/8"	2", 10"
		5/8"	8" (Ridged)
		3/4"	2-1/2"
		1"	3"
735	<b>HIGH STRENGTH</b> adhesive for metal, plastic, fabric, leather, wood, ceramics, coated papers and non-porous materials. Exhibits good resistance to shock in low and ambient temperatures. 25 Second Open Time. Color: Amber	7/16"	10", 15"
		5/8"	2", 10"
		1"	3"
		Pellets	
738	<b>GENERAL PURPOSE</b> adhesive for woodworking and carpets. Low viscosity, very good hot tack. 15 Second Open Time. Color: Tan	7/16"	4", 10"
		5/8"	10"

FORMULA	APPLICATION	AVAILABLE SIZES	
		DIAMETER	LENGTH
739	<b>HIGH STRENGTH WOOD</b> adhesive provides a strong bond to wood and is also used for auto body dent removal. 25 Second Open Time. Color: Amber	7/16"	10"
862	<b>LOW TEMP PACKAGING ADHESIVE</b> with excellent hot tack, short open time, and good delivery rate. Good adhesion to plain and some coated corrugated packaging materials. Bonds to: corrugated, paper products, wood, foam. 15 Second Open Time. Color: Light Amber	7/16" 5/8" 5/8" 1"	15" 8" (Ridged) 10" 3"
925	<b>ACRYLIC HIGH PERFORMANCE</b> adhesive developed for superior bonding with hard-to-bond-to surfaces. This adhesive is strong and flexible with a medium open and set time. Bonds to: concrete, vinyl, metal, rubber, tile, stone, ceramics, leather, melamine, coated papers, foil, wood, nylon, fabric, glass and plastic. 60 Second Open Time. Color: Clear	7/16" Pellets	10"
930	<b>3 MINUTE HIGH PERFORMANCE</b> adhesive, use in bead or spray form. Has a long open time for difficult-to-bond-to surfaces. Bonds to a variety of plastics, metal, wood, vinyl, glass and ceramics. 180 Second Open Time. Color: Off-White	7/16" 5/8"	10" 15"
3190	<b>HIGH PERFORMANCE</b> adhesive for difficult-to-bond substrates. Will adhere to most substrates, porous or non-porous materials. Bonds to glass, leather, metal, plastic, magnets, ceramics, wood, ABS, PVC and some vinyls. 45 Second Open Time. Color: Clear	7/16"	10"
4588	<b>GENERAL PURPOSE</b> polyamide adhesive, elastomeric high performance general purpose hot melt. Excellent impact resistance at low temperatures. Excellent high temperature resistance. Bonds to many substrates: metal, plastic, wood, leather, fabric, non-woven fabric, film and foil. 25 Second Open Time. Color: Amber	5/16" 7/16"	4" 10"
B-10530	<b>FUGITIVE PRESSURE-SENSITIVE</b> adhesive forms a peel-able bond between many substrates: polyethylene, polypropylene and paper. Most commonly used for affixing credit cards to brochures. It can also be used in spray form. Long Open Time. Color: Clear	0.15 lb Pillows	
B-2000	<b>GENERAL PURPOSE "LOW STRINGING"</b> adhesive adheres to non-porous materials: metal, plastic, glass and ceramics. Traditionally, used in glue skillets for the floral industry. 35 Second Open Time. Color: Cream	Pellets	
B-5800	<b>PRESSURE-SENSITIVE</b> adhesive that can be used for a variety of light assembly applications. Light color, excellent creep resistance and specific adhesion to polyethylene and non woven substrates. Very suitable for spray or extrusion at low temperatures. Long Open Time. Color: Yellow	0.15 lb Pillows	
S-12478-10	<b>POLYAMIDE</b> adhesive, elastomeric high performance general purpose hot melt. Excellent impact resistance at low temperatures. Excellent high temperature resistance. Bonds to many substrates: metal, plastic, wood, leather, fabric, non-woven fabric, film and foil. 75 Second Open Time. Color: Amber	7/16"	10"

# PROFESSIONAL GLUE GUNS



## PRO2-500 ADJUSTABLE TEMP

- Adjustable temp from 220° F to 400° F
- 500 Watt heater, greater glue output
- Comfort rubber grip handle
- Stroke adjustment screw
- Integrated gun balancer mount hole
- Interchangeable nozzles available
- Protective heat resistant nozzle cover
- Lighted on/off switch



Includes: Extra nozzle + storage case  
 Uses: 5/8" (0.62") dia. glue sticks  
 Weight: 1.75 lbs. | Watts: 500



## PRO9700A ADJUSTABLE TEMP

- Adjustable temp from 220° F to 400° F
- Ergonomic long trigger design
- Comfort rubber grip handle
- Stroke adjustment screw
- Integrated gun balancer mount hole
- Interchangeable nozzles available
- Protective heat resistant nozzle cover
- Lighted on/off switch



Includes: Extra nozzle, 2 detachable stand styles + storage case  
 Uses: 7/16" (0.43") dia. standard glue sticks  
 Weight: 1.6 lbs. | Watts: 300



## PRO2-220 ADJUSTABLE TEMP

- Adjustable temp from 220° F to 400° F
- Ergonomic long trigger design
- Anti-slip grip handle
- Stroke adjustment screw
- Integrated gun balancer mount hole
- Interchangeable nozzles available
- Protective heat resistant nozzle cover
- Lighted on/off switch



Includes: Extra nozzle, 2 detachable wire stand styles + storage case  
 Uses: 7/16" (0.43") dia. standard glue sticks  
 Weight: 1.3 lbs. | Watts: 220



## PRO2-220HT HIGH TEMP

- Operating temp of 380° F
- Ergonomic long trigger design
- Anti-slip grip handle
- Stroke adjustment screw
- Integrated gun balancer mount hole
- Interchangeable nozzles available
- Protective heat resistant nozzle cover
- Lighted on/off switch



Includes: Extra nozzle, 2 detachable wire stand styles + storage case  
 Uses: 7/16" (0.43") dia. standard glue sticks  
 Weight: 1.3 lbs. | Watts: 220



**PRO2-180 HIGH TEMP**

- Operating temp of 380° F
- Quick heating feature
- Ergonomic long trigger design
- Stroke adjustment screw
- Integrated gun balancer mount hole
- Interchangeable nozzles available
- Protective heat resistant nozzle cover
- Lighted on/off switch

Includes: Extra nozzle + 2 detachable wire stand styles  
 Uses: 7/16" (0.43") dia. standard glue sticks  
 Weight: 1.3 lbs. | Watts: 180



**PRO2-100 HIGH TEMP**

- Operating temp 380° F
- Ergonomic long trigger design
- Comfort rubber grip handle
- Interchangeable nozzles available
- Protective heat resistant nozzle cover
- On/off switch

Includes: Detachable wire stand  
 Uses: 7/16" (0.43") dia. standard glue sticks  
 Weight: 0.9 lbs. | Watts: 100



**PRO2-100L LOW TEMP**

- Operating temp 250° F
- Ergonomic long trigger design
- Comfort rubber grip handle
- Interchangeable nozzles available
- Protective heat resistant nozzle cover
- On/off switch

Includes: Detachable wire stand  
 Uses: 7/16" (0.43") dia. standard glue sticks  
 Weight: 0.9 lbs. | Watts: 100



**PRO2-80 HIGH TEMP**

- Operating temp of 380° F
- Ergonomic long trigger design
- Anti-slip grip handle
- Integrated gun balancer mount hole
- Protective heat resistant nozzle cover

Includes: Detachable wire stand  
 Uses: 7/16" (0.43") dia. standard glue sticks  
 Weight: 0.85 lbs. | Watts: 80



**HE-750W HIGH TEMP**

- Operating temp of 380° F
- Ergonomic finger trigger design
- Anti-slip grip handle
- Interchangeable nozzles available

Includes: Detachable wire stand  
 Uses: 7/16" (0.43") dia. standard glue sticks  
 Weight: 0.8 lbs. | Watts: 80



**DT-750 DUAL TEMP**

- Operating temps of L 250° F - H 380° F
- Ergonomic finger trigger design
- Anti-slip grip handle
- Interchangeable nozzles available

Includes: Detachable wire stand  
 Uses: 7/16" (0.43") dia. standard glue sticks  
 Weight: 0.8 lbs. | Watts: 80

# BATTERY OPERATED GLUE GUNS



## PRO2-60 18 VOLT CORDLESS

- Operating temp of 380° F
- Works with any 18 Volt Ryobi® style li-ion battery (not included)
- Comfort rubber grip handle
- Interchangeable nozzles available
- Protective heat resistant nozzle cover
- On/off switch and power indicator light

Includes: Glue gun

Uses: 7/16" (0.43") dia. standard glue sticks

Weight: 0.85 lbs. | Watts: 60

NOTE: Battery & charger are required but NOT included



## HYBRID-120 18 VOLT CORDLESS/CORDED

- Operating temp of 380° F
- Works with any 18 Volt Ryobi® style li-ion battery (not included)
- Ergonomic long finger trigger design
- Interchangeable nozzles available
- Protective heat resistant nozzle cover
- On/off switch and power indicator light

Includes: Glue gun, extra nozzle, 8ft. A/C power cord + storage case

Uses: 7/16" (0.43") dia. standard glue sticks

Weight: 1.15 lbs. | Watts: 120

NOTE: Battery & charger are NOT included

# CORDLESS GLUE GUN KITS

## PRO2-60KIT

- Kit Includes:
  - (1) PRO2-60 cordless glue gun
  - (1) #P103 18 Volt Ryobi® style li-ion battery
  - (1) #P117 Ryobi® style charger



**WORKING TIME  
WITH 2Ah BATTERY**



## HYBRID-120KIT

- Kit Includes:
  - (1) HYBRID-120 cordless glue gun
  - (1) #P103 18 Volt Ryobi® style li-ion battery
  - (1) #P117 Ryobi® style charger
  - (1) Extra nozzle
  - (1) Storage case
  - (1) 8ft. A/C power cord



**WORKING TIME  
WITH 2Ah BATTERY**



**FREEDOM TO WORK  
ANYWHERE!**

## BATTERY ADAPTERS

- For use with either PRO2-60 or HYBRID-120 cordless glue guns
- Slide and click adapter into your existing 18 or 20 Volt li-ion battery
- 6 Models available



**Cordless  
Glue Gun** + **18V/20V  
Adapter** + **Existing  
Battery**



**Makita**

**DEWALT**



**RIDGID**

**CRAFTSMAN**

**MIL-18V** (Fits Milwaukee® 18 Volt Li-ion Battery)

**MAK-18V** (Fits Makita® 18 Volt Li-ion Battery)

**DEW-20V** (Fits DeWalt® 20 Volt Li-ion Battery)

**BOS-18V** (Fits Bosch® 18 Volt Li-ion Battery)

**RID-18V** (Fits Ridgid® 18 Volt Li-ion Battery)

**CRA-20V** (Fits Craftsman® 20 Volt Li-ion Battery)

SUREBONDER® is a registered trademark of FPC and FPC is a trademark of FPC Corporation. All other trademarks or trade names are of their respective owners.

# SPRAY TECHNOLOGY

DISPENSE GLUE AS  
BEAD OR SPRAY

**ADJUSTABLE  
SPRAY PATTERN**  
FROM NARROW TO WIDE

## SPRAY-500

- Operating temp of 400° F
- Lighted on/off switch + LED "Ready" light
- Rubber gripped comfort handle
- Integrated gun balancer mount hole
- Use as bead or spray glue gun

Includes: 1 Bead nozzle, 1 spray nozzle, quick connect hose with air/pressure regulator + storage case

Uses: 5/8" (0.59") dia. glue sticks  
Weight: 3.5 lbs. | Watts: 500

NOTE: Air compressor is NOT included but is required for spray applications. For bead use air compressor is NOT needed and air line MUST be disconnected before use.

## APPLICATIONS

Great for heat sensitive materials and large area coverage

- Insulation
- Cubicle & Office Partitions
- Case Inserts
- Rug Backings
- Furniture & Upholstery
- Headliners
- Packaging





# MOTORIZED POWER

THE ULTIMATE  
SPEED, POWER & PRECISION FOR  
**MAXIMUM OUTPUT**

WITH MINIMAL USER EFFORT  
AND NO AIR ASSIST

## MGG-800

- Operating temp of 400° F
- Twin motors dispense up to 10 lbs. of adhesive per hour
- Continuous feed allows endless dispensing
- Auto-reverse feature prevents clogging of the nozzle and helps to eliminate glue drip
- Lighted on/off switch + LED "ready" light
- Rubber gripped comfort handle
- Integrated gun balancer mount hole

Includes: Extra stand + storage box  
Uses: 5/8" (0.62") dia. glue sticks  
Weight: 2.75 lbs. | Watts: 800

NOTE: NO air compressor needed

## APPLICATIONS

Perfect for high volume projects

- Large Box Sealing
- Case Inserts
- Furniture & Upholstery
- Packaging
- Wood Working



TWIN MOTORS



2 STANDS  
3 STANDING  
POSITIONS



# Glu-Dabs

## GLU DABS

- Pre-made pressure-sensitive dots of adhesive on a roll
- Attach samples, offers, cards, etc. to products with no dry time
- For permanent or removable assembly applications
- Convenient dispenser box
- 6,000 Dabs per box
- Each dab is approx. 3/8" dia.
- 4 Formulas Available

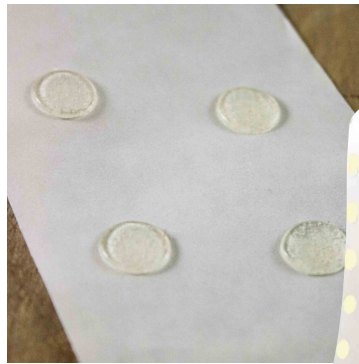
- DOT-L Low tack strength, removable, best for cardstock or paper
- DOT-M Medium tack strength, removable, best for cardstock or heavy paper
- DOT-H High tack strength, removable, best for product to product
- DOT-S Super tack strength, permanent, best for product to product

IDEAL FOR  
PRODUCT TO PRODUCT  
APPLICATIONS

GREAT ALTERNATIVE TO  
DOUBLE-SIDED TAPES

PERFECT FOR ASSEMBLY LINES

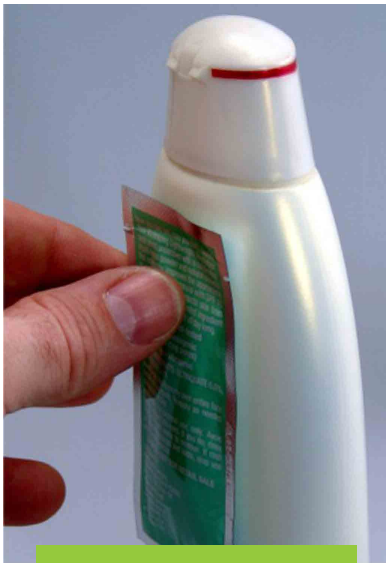
SECURE PRODUCTS IN PLACE  
BEFORE SHRINK WRAPPING



Offset glue dot pattern



Roll of  
**6,000**  
**GLU DABS**  
in a convenient  
dispenser box



EASILY ATTACH  
PRODUCT SAMPLES



QUICKLY CREATE  
MULTI-PACKS



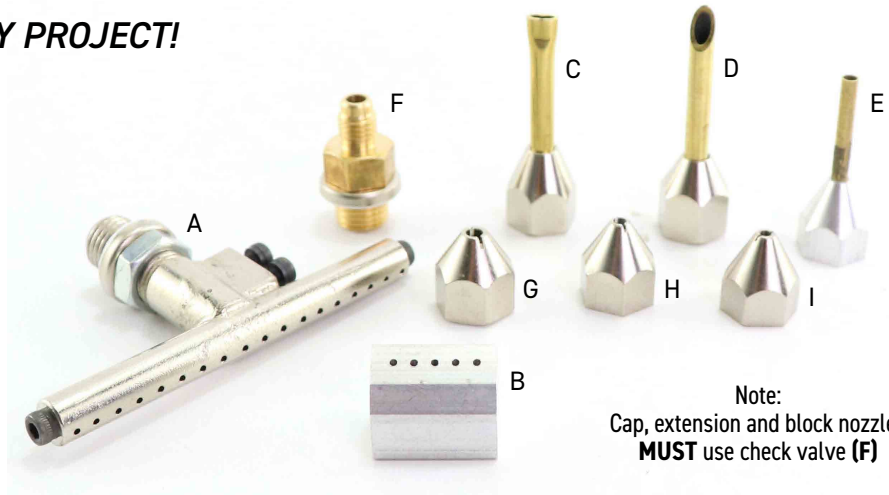
THIN DESIGN YET  
DURABLE HOLD

# ACCESSORIES

**THERE'S A NOZZLE FOR EVERY PROJECT!**

## SPECIALTY NOZZLES

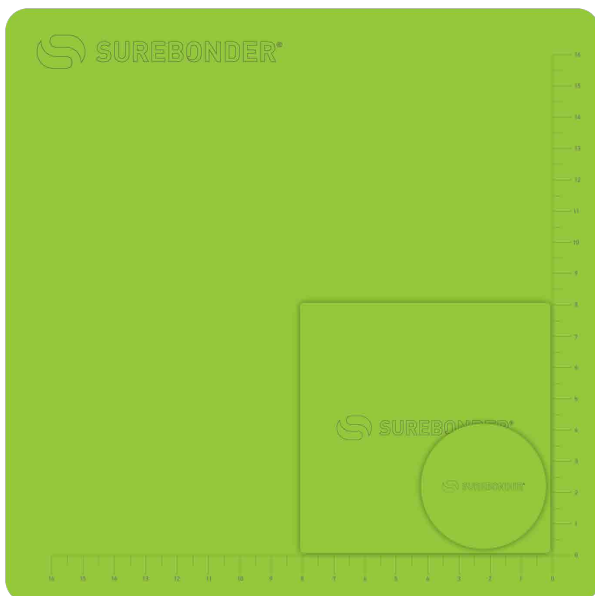
- (A) 6032 "T" Carpet nozzle
- (B) 102 Block (ribbon) nozzle
- (C) 103F 0.053" Flat extension
- (D) 103R 0.125" Round extension
- (E) 103N 0.080" Needle extension
- (F) 101 0.160" Check valve
- (G) 103CS-125 0.125" Cap
- (H) 103CS-90 0.090" Cap
- (I) 103C-076 0.076" Cap



## GLUE PADS

- Protect and keep your work surface clean!
- Double-sided silicone pads
- Measures 2 mm thick to provide non-stick, heat resistant surface - up to 400° F
- Easy to clean - allow glue to dry and it peels off, use hot soapy water
- Perfect for any project
- 3 Sizes Available

- 6104 4" Round diameter pad
- 6100 8" x 8" Square pad
- 6201 19" x 19" Square pad with rounded corners & embossed rules



**KEEP YOUR WORK SURFACES  
CLEAN & PROTECTED**

*HEAT RESISTANT*

*EASY TO CLEAN*

*100% SILICONE*





# SUREBONDER®

BETTER BONDING™  
SINCE 1968



The USA's leading manufacturer of shaped hot melt adhesives.  
Offering the best solutions for all of your adhesives needs.  
Let us show you how hot melt can work for you.

**VISIT [SUREBONDER.COM/INDUSTRIAL](https://www.surebonder.com/industrial)**