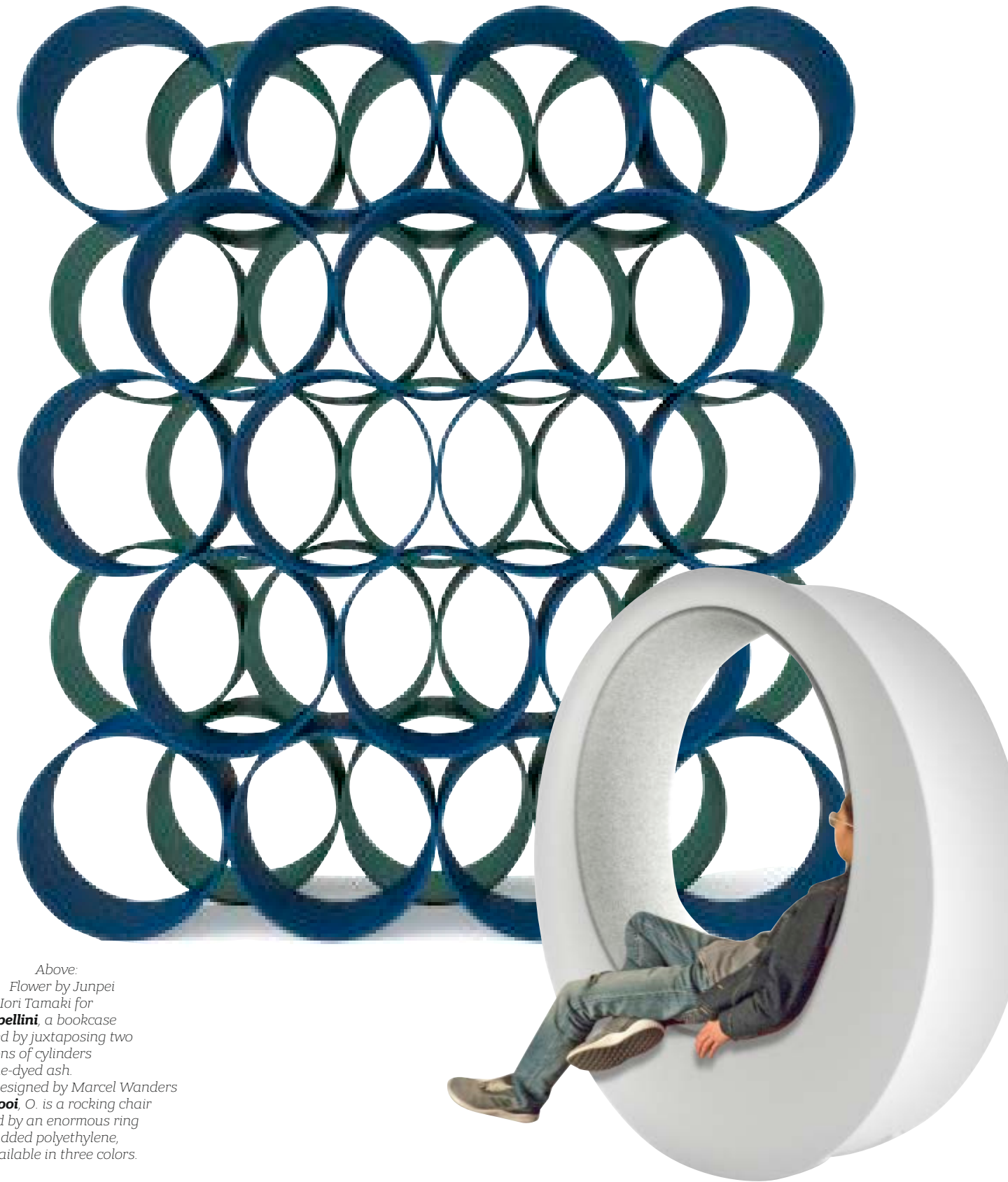


# THE DESIGN CIRCLE

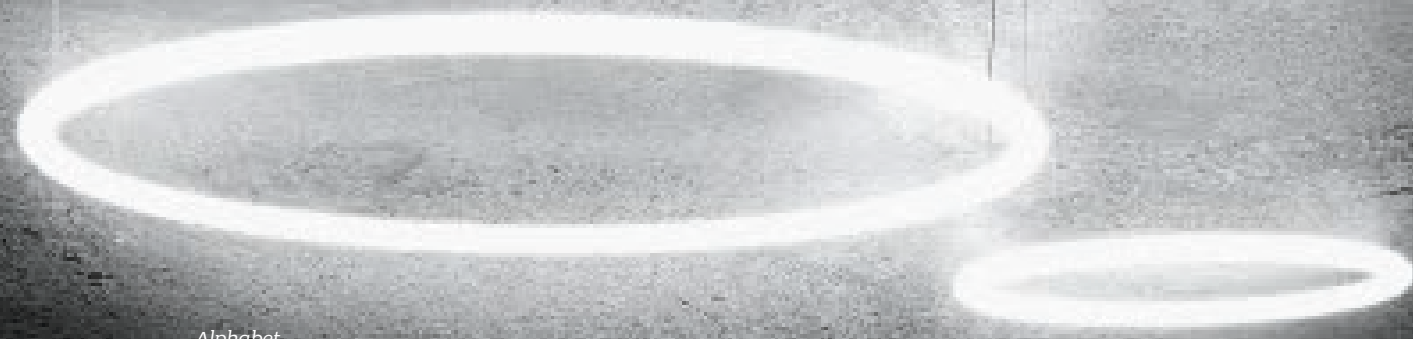
In praise of circles, the **perfect graphic sign**, and a timely presence in furniture design. A protagonist as a single form or an infinitely repeatable **module**, from lamps to chairs

by Katrin Cosseta

*Arrangements, designed by Michael Anastassiades for **Flos**, is a modular system of geometric lighting elements (aluminium and LED flex strips) that can be combined in different ways to create multiple compositions of single chandeliers.*



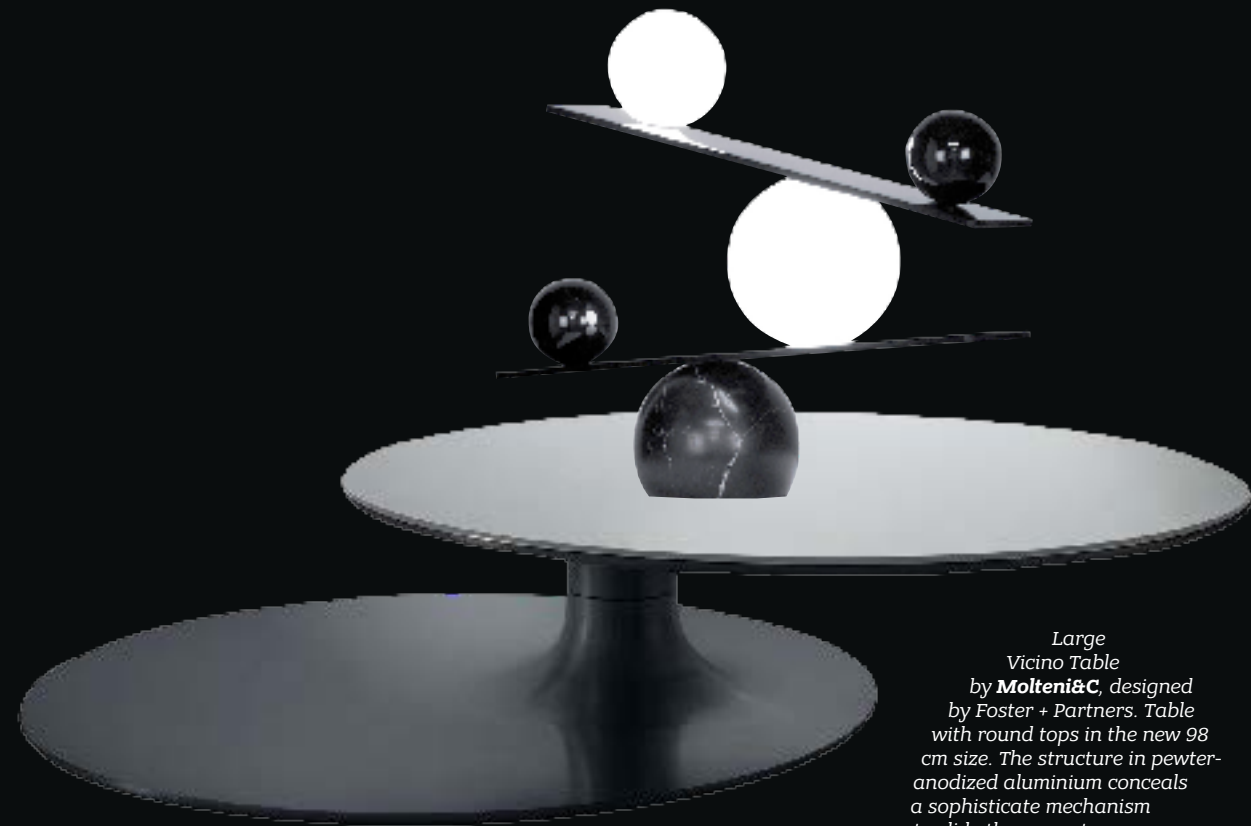
*Above: Flower by Junpei & Iori Tamaki for **Cappellini**, a bookcase created by juxtaposing two partitions of cylinders in aniline-dyed ash.  
Right: Designed by Marcel Wanders for **Moooi**, **O** is a rocking chair formed by an enormous ring of padded polyethylene, available in three colors.*



Alphabet  
of Light Circular,  
designed by BIG  
for **Artemide**. New circular  
modules in injection-molded  
opaline PMMA, in two diameters,  
90 and 150 cm, to make  
graphic signs of light.



Above:  
**Halo Circular** by  
Martin Azúa for **Vibia**  
A suspension lamp with circular  
modules, in compositions of from one  
to four units, with white lacquered  
methacrylate diffuser. Below, left: **Collapsible  
Moon** by Kazuhiro Yamanaka for **Pallucco**.  
Disk lamp with soft foldable structure like  
that of a photographer's lighting reflector.  
Made with a special technical fabric  
in tempered spring steel covered in black  
rubber to contain an LED strip.  
Below: **Hulahoop** by Alessandro Busana  
for **Bonaldo**, table with marble top, base  
composed of rings of metal painted  
in various tones, or with copper,  
brass and decapé finish.



Large  
**Vicino Table**  
by **Molteni&C**, designed  
by Foster + Partners. Table  
with round tops in the new 98  
cm size. The structure in pewter-  
anodized aluminium conceals  
a sophisticated mechanism  
to slide the upper top.  
**Balance** by Victor Castanera  
for **Oblure**, table lamp in black  
marble, steel and opaline  
glass.



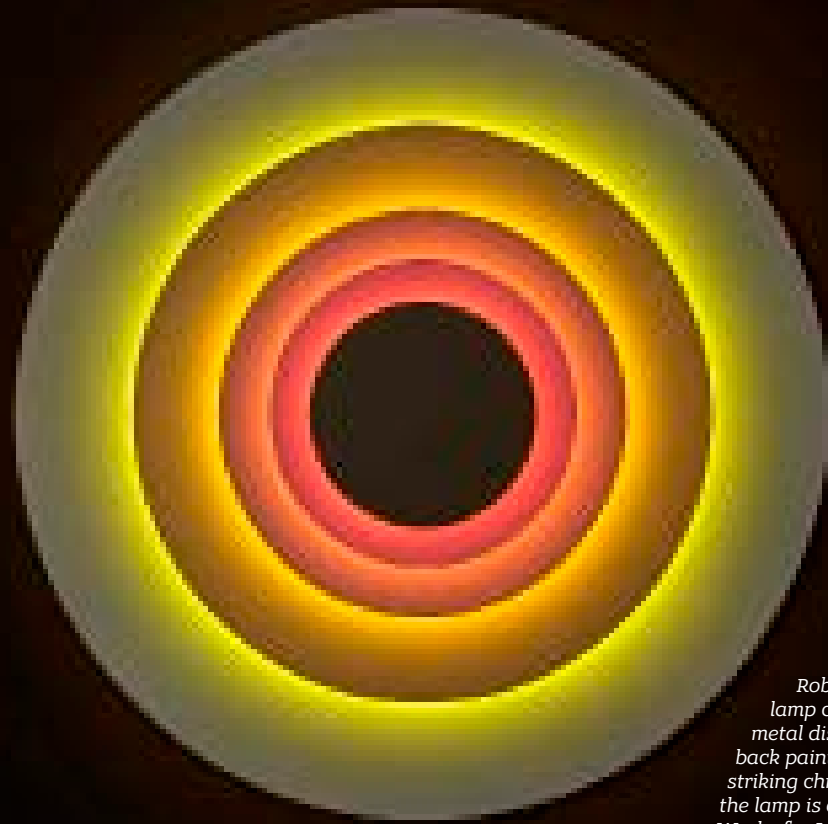
Loop by **Martinelli Luce**,  
designed by Emiliana Martinelli.  
A suspension lamp composed  
of curved sectors in aluminium  
section joined to form rings  
of different diameters. Diffuser  
in white opal polycarbonate,  
with built-in LED light source.

Hanging  
Hoop Chair  
by **Lee Broom**,  
in the new black edition,  
composed of two  
powder-coated steel rings;  
seat covered  
in **Kvadrat** fabric.

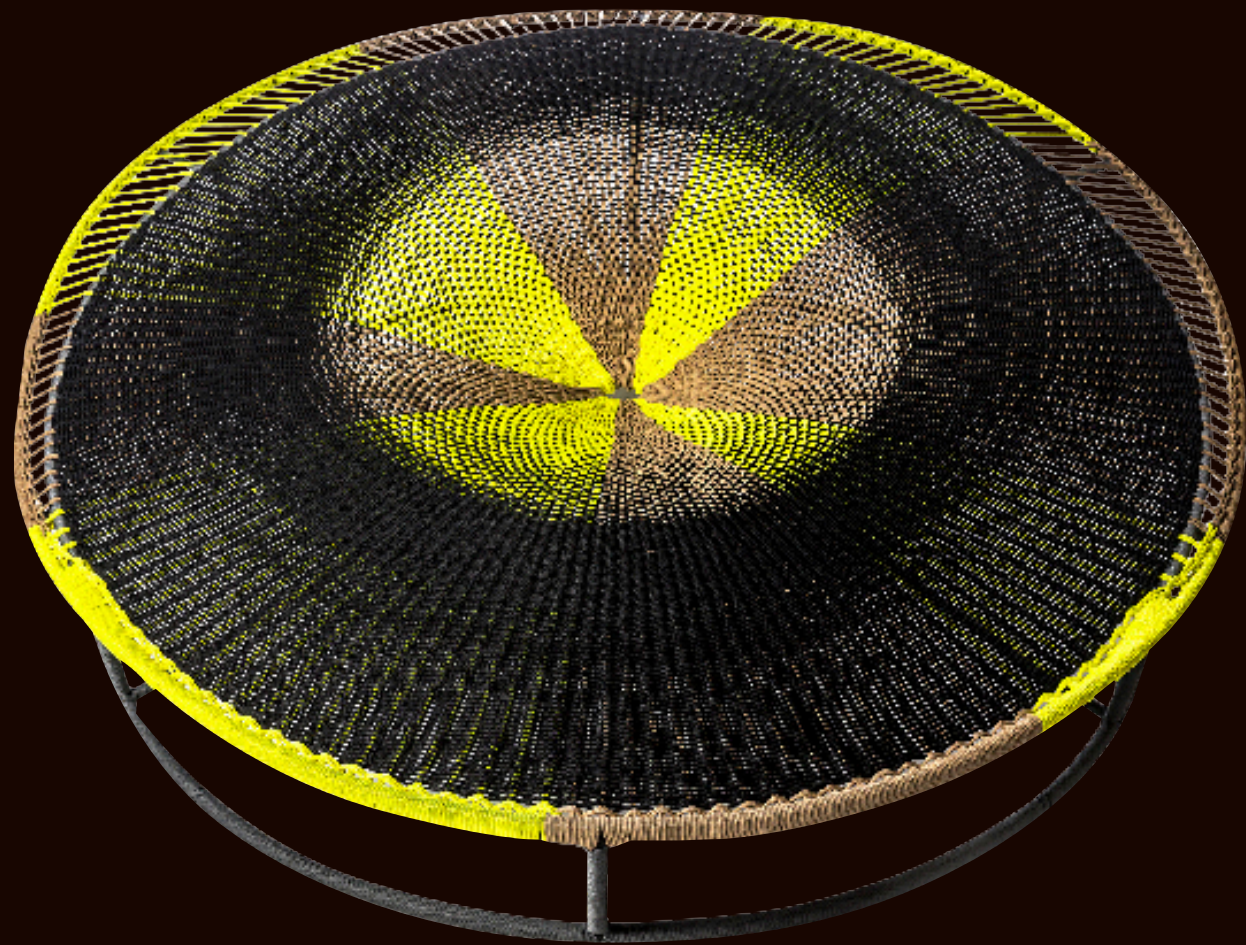
Ring-O  
designed  
by Saverio  
Incombenti for **Daa**,  
indoor-outdoor swing  
in hand-welded  
and curved metal,  
available in a range  
of colors.

Above:  
Compendium  
Circle by Daniel Rybakken  
for **Luceplan**, an LED  
suspension lamp (direct emission  
when pointed downward, diffused light  
when aimed upward) that makes  
it possible to combine up to three  
aluminium rings of different diameters.  
Black, brass or alu finish. *esto corroruum*.  
Left: Sound Rame Cut by Giovanni  
Battista Gianola for **Masiero**, floor  
lamp with structure in metal with  
brass or copper finish, diffusers  
in decorated glass.

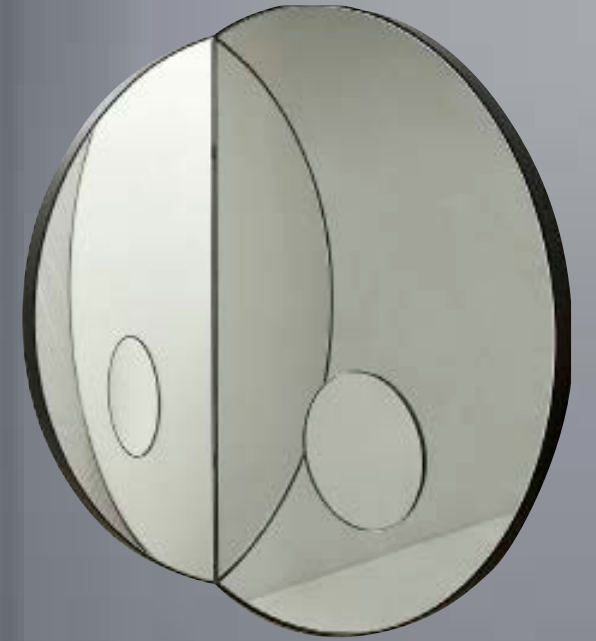
U-Light  
by Timo Ripatti  
for **Axo Light**,  
collection of wall, ceiling  
and suspension lamps  
in aluminium, with rust  
or anthracite color.  
Dimmable built-in LED  
light source.



Left:  
Concentric by  
Rob Zinn for **Marset**, wall  
lamp composed of concentric  
metal disks with white paint finish,  
back painted in various colors to create  
striking chromatic effects when  
the lamp is on. Below: Amaca by David  
Weeks for **Moroso**, from the M'Afrique  
collection. Outdoor daybed available  
in two diameters, made by artisans  
in Senegal with traditional weaving  
techniques to create a moiré effect  
in a range of color combinations.



Left:  
Heliacal by OS  
& OOS for **FontanaArte**,  
floor lamp with three diffuser  
disks in glass, with polarized  
surface to increase or reduce the  
brightness level, for various  
aesthetic nuances from 'first sun'  
to eclipse. Complete daylight effect.  
Below: Palmer by Toan Nguyen for  
**Fendi Casa**, coffee tables with  
metal supports and circular  
tops, painted or covered  
in leather.



Archimede  
by Elisa Ossino  
for **Salvatori**, a mirror  
that plays with the  
geometry of the circle thanks  
to a hinge that permits  
placement of one section  
at an angle, to create  
multiple reflections.

