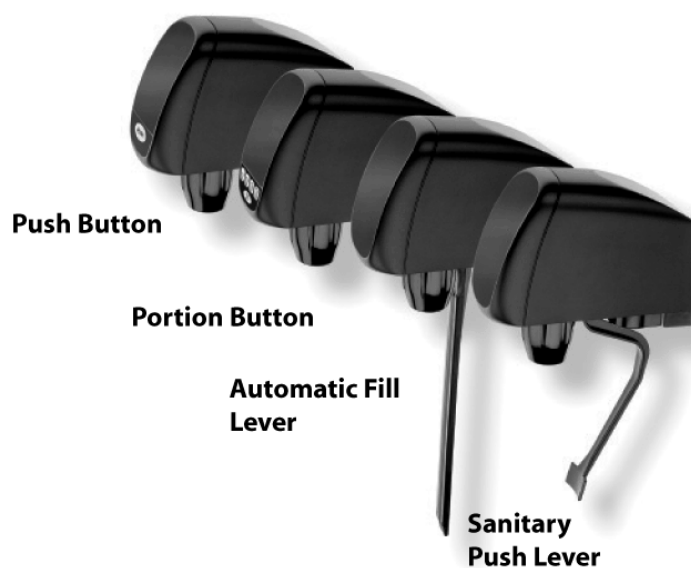


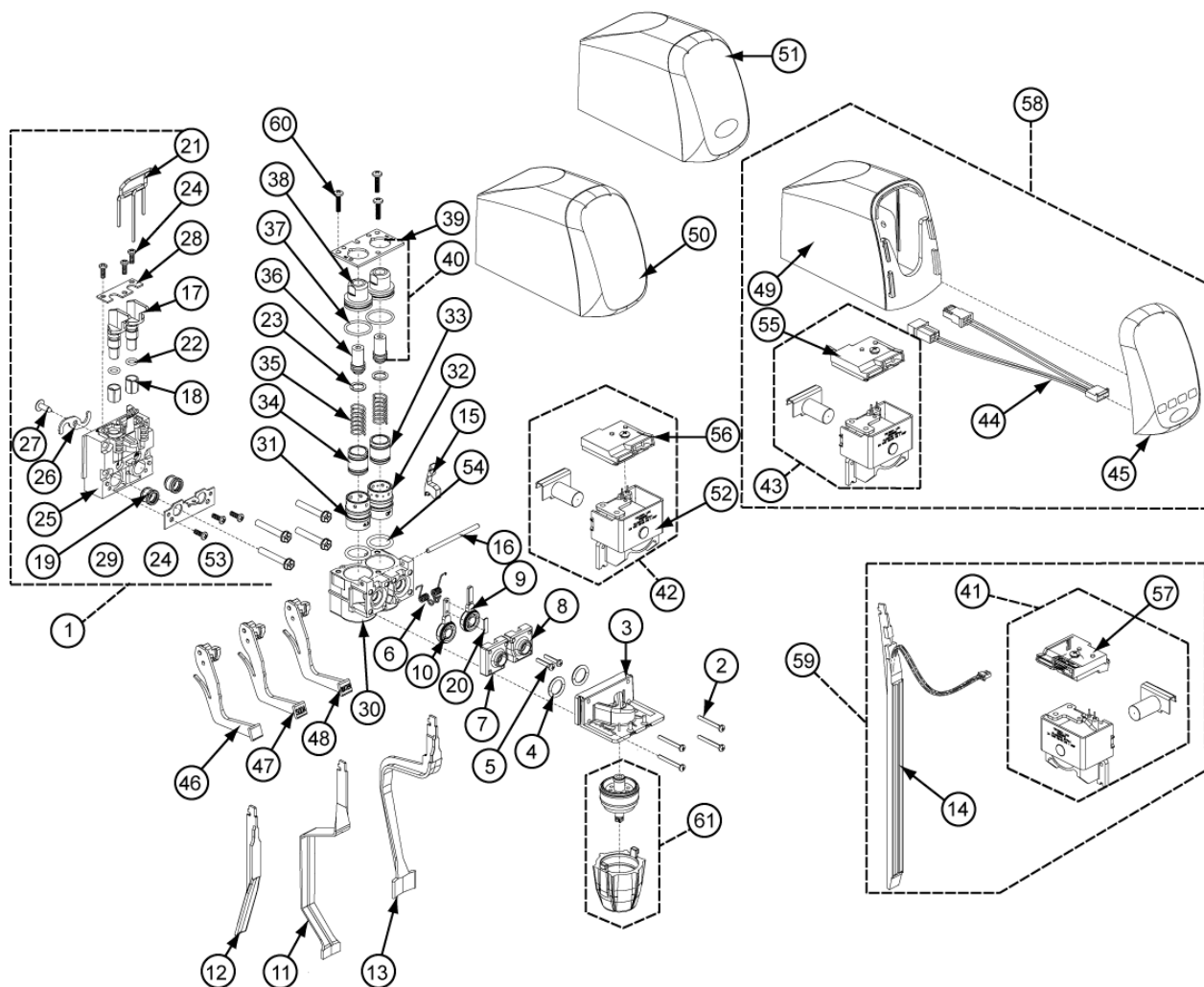


# Parts Manual

## Flomatic - 464



# FLOMATIC 464-GP

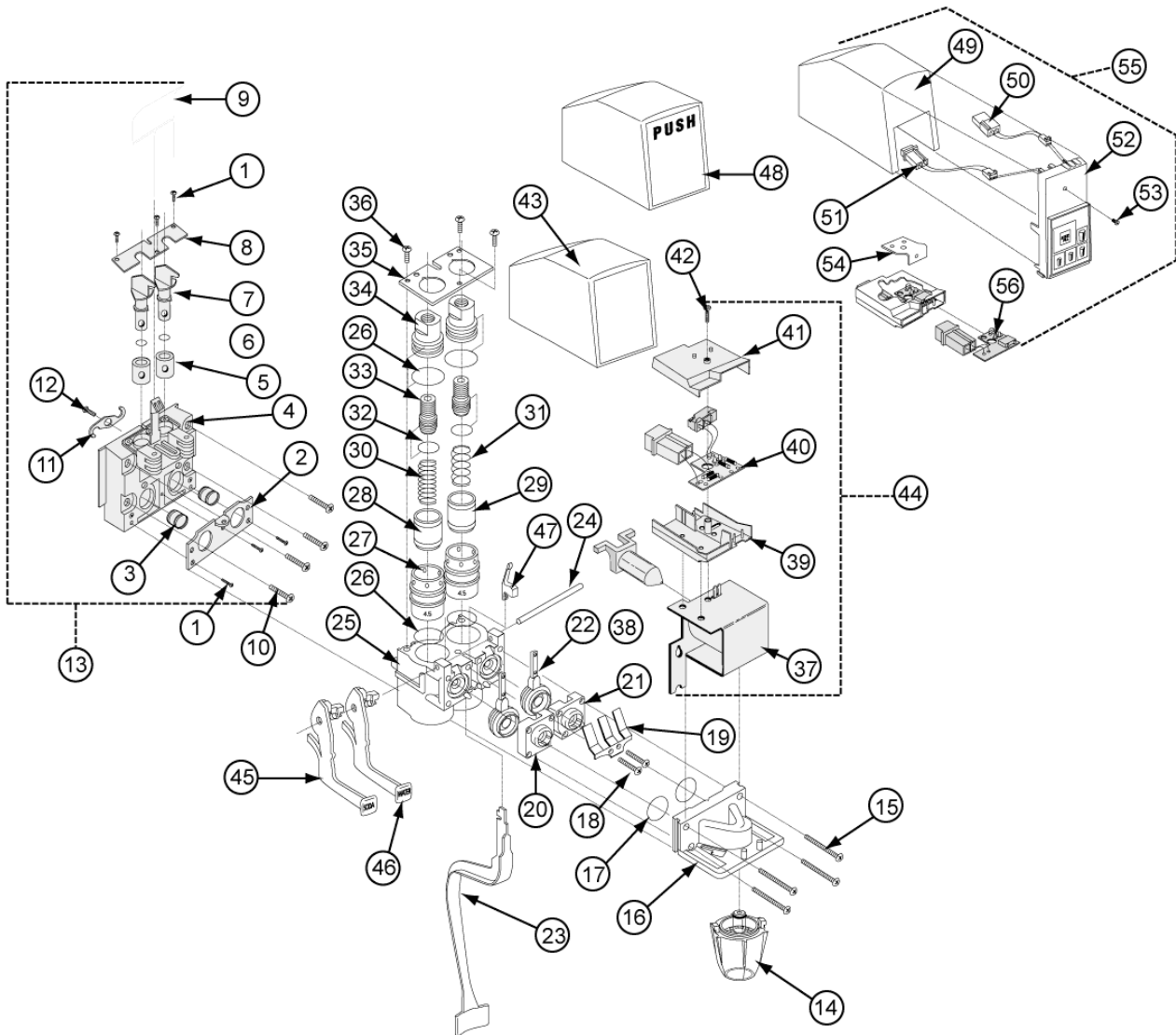


Item No.	CCP Part#	Mfg. Part#	CONA Material#	Description
NR	104905	464-GP-P36-1600	150026856	VALVE, W/PORTION CONTROL,SNGL AC
NR	104903	464-GP-A36-1621	150026858	VALVE, AUTO-FILL
NR	104904	464-GP-E36-1621	150026857	VALVE, W/SANITARY PUSH LEVER
NR	103638	464-GP-S36-1625	150027372	VALVE,FLOMATIC 464,NO MTG.,BLK
1	26825	380-Q	150029021	BLOCK MOUNTING FLOMATIC
2	28617	020003478	150028338	SCREW 4 40 X 1 PH. ROUND SS
3	1070579	507-36-G	150000327	DIFFUSER BLOCK 464
4	26378	509	150029182	ORING BLOCK DIFFUSER
5	27521	510	150028820	SCREW 4 40X5/8 SS
6	107454	511-04	150025723	SPRING,COIL,FLOMATIC PALLET RETNR
7	1070669	512-02-G	150000293	CAP ORIFICE LEFT
8	1070670	513-02-G	150000292	CAP ORIFICE RIGHT
9	107990	515-30	150025463	PALLET,BEARING,SET
10	1067578	515-02	150001714	PALLET, HI FLO,464GP VALVES
11	29953	516-06	150027639	LEVER SANITARY SS 454
12	28095	516-07	150028600	LEVER BLACK
13	20470	516-09	150031280	LEVER SANITARY FLOMATIC
14	106011	516-10	150026334	LEVER,SENSOR,FLOMATIC 464
15	1067588	517-05	150001709	LEVER ELECTRIC RETAINER
16	1067728	524-02	150001638	PIN PIVOT FLOMATIC
17	27525	0000526		PLUG SHUT OFF
18	28612	527	150028343	SEAL BOOT FLOMATIC

## 464-GP Postmix Valve

Item No.	CCP Part#	Mfg. Part#	CONA Material#	Description
19	28618	528	150028337	SEAL STEM FLOMATIC
20	105383	530	150026654	BEARING,PALLET,FLOMATIC
21	28616	538-04	150028339	PIN LATCH FLOMATIC
22	27528	543	150028817	ORING DIFFUSER
23	27529	551	150028816	ORING ADJUST SCREW SODA
24	1068449	553-00	150001333	SCREW 6 X 3/8
25	1065519	562-80	150002622	BLOCK BLANK FLOMATIC
26		564	150002622	S-CLIP
27	27558	565	150028804	SCREW 8X12 PH
28	26825	380-Q	150029021	BLOCK MOUNTING FLOMATIC
29	27532	568	150028815	RETAINER STEM SEAL
30	958384	600-47-G	150003295	CONTROL FLOW FLOMATIC 464
31	1068840	602-03	150001157	CYLINDER CERAMIC 454
32	1068840	602-03	150001157	CYLINDER CERAMIC 454
33	1068841	603-03-G		PISTON SYRUP FLOWMATIC
34		604-04		PISTON SODA
35		605-02		SPRING FLOW CTRL HF SODA
36	26401	607	150029169	SCREW ADJUSTMENT
37	26402	608	150029168	ORING CYLINDER SEAL ORIG COKE:608 **0001
38		609-02	150029168	NUT BRIX ADJ 464
39	27566	610-04	150028800	PLATE RETAINER 6 32 FLOMATIC
40	105712	643-00	150026482	O-RING,FLOW CONTROL,BONNET
41	107453	774-A36	150025724	VALVE,SOLENOID,SNGL,AUTOFIL,FLOMATC
42	26831	774-E36	150029016	SOLENOID ASSY. COMPLETE
43		774-P36	150029016	SOL PCTRL SNGL YOKE AC
44	116072	817-04	150022364	HARNESS,CPM,FLOMATIC
45		835	150022364	PC MODULE 4 CUP
46	1070024	1028	150000613	LEVER WATER 464 ADD A LEVER
47	28098	1028-S	150028597	LEVER SODA FLOMATIC
48	1066766	1028-W	150002103	LEVER WATER 424/464 VALVE
49	107065	1601	150025932	COVER,BASE,FLOMATIC
50	117512	1602-ORA	150021464	COVER,FRONT,FLOMATIC
51	105324	1610	150026692	PLATE,FACE,PUSH BUTTON,464 GP FLOMATIC
52	26828	9774-1	150029019	SOLENOID COIL
53	131500	5011953	150012830	SCREW,#10-24X1-1/4,SELF TAP
54	106961	5028273	150025983	ORING,SLEEVE
55		5030418	150025983	SWITCH, PCTRL
56	112877	5030419	150023728	SWITCH,HOUSING,SLV
57	118601	5030421	150020922	MODULE BOARD, FLOMATIC
58	112523	5031015	150023834	KIT,A/C,PC CONVERSION,464
59	20608	5031018	150031199	SOLENOID AUTO FILL M SERIES
60	117867	020001284	150021304	SCREW,#8 X 5/8 PAN HEAD
61	1068254	020001750	150001417	NOZZLE 464

# FLOMATIC 464 HF



Item No.	CCP Part#	Mfg. Part#	CONA Material#	Description
NR		464-HF-S35-1525	150001417	VALVE- SELF-SERVICE
NR		464-HF-P35-1500	150001417	VALVE- PORTION CONTROL
1	1068449	553-00	150001333	SCREW 6 X 3/8
2	27532	568	150028815	RETAINER STEM SEAL
3	28618	528	150028337	SEAL STEM FLOMATIC
4		562-72	150028337	Mounting Block
4.1	1065519	562-80	150002622	BLOCK BLANK FLOMATIC
5	28612	527	150028343	SEAL BOOT FLOMATIC
6	27528	543	150028817	ORING DIFFUSER
7	27525	0000526		PLUG SHUT OFF
8	28612	527	150028343	SEAL BOOT FLOMATIC
9	28616	538-04	150028339	PIN LATCH FLOMATIC
10		563-03	150028339	Mounting Bolt
11		564	150028339	S-CLIP
12	27558	565	150028804	SCREW 8X12 PH
13	110945	372-Q	150024117	BLOCK,MOUNTING,372Q
13.1	26825	380-Q	150029021	BLOCK MOUNTING FLOMATIC
14		501-65	150029021	NOZZLE ASSEMBLY BLACK
15	28617	020003478	150028338	SCREW 4 40 X 1 PH. ROUND SS

## 464-HF Postmix Valve

Item No.	CCP Part#	Mfg. Part#	CONA Material#	Description
16		507-36	150028338	DIFFUSER BLOCK
17	26378	509	150029182	ORING BLOCK DIFFUSER
18	27521	510	150028820	SCREW 4 40X5/8 SS
19	26379	511	150029181	SPRING
20		512-02	150029181	Orifice Cap Left
21		513-02	150029181	Orifice Cap Right
22	26381	515	150029179	PALLET
23	20470	516-09	150031280	LEVER SANITARY FLOMATIC
24	1067728	524-02	150001638	PIN PIVOT FLOMATIC
25		600-46	150001638	FLOW CONTROL BASE
26	26402	608	150029168	ORING CYLINDER SEAL      ORIG COKE:608      **0001
27	1068840	602-03	150001157	CYLINDER CERAMIC 454
28		604-03	150001157	PISTON SODA GP
29		603-03	150001157	Piston Syrup
30	27563	605-01	150028803	SPRING FLOW CONTROL
31		605-02	150028803	Spring Brix Adjustment
32	27529	551	150028816	ORING ADJUST SCREW SODA
33	26401	607	150029169	SCREW ADJUSTMENT
34		609	150029169	Nut Brix Adjustment
34.1	27536	642-00	150028813	NUT ADJUSTMENT BRIX 424 VALVE
35	27566	610-04	150028800	PLATE RETAINER 6 32 FLOMATIC
36		611-01	150028800	SCREW 6-32X1/4 SS
37		9770	150028800	SOLENOID COIL (ONLY)
38	1070919	763-01	150000188	PLUNGER,DASH YOKE,SINGLE COIL
39	26830	765-01	150029017	SWITCH HOUSING BASE
40	20468	769-U25		SWITCH, SINGLE COIL, E25/S25
41	28615	766-01	150028340	HOUSING CONVERTIBLE SWITCH
42	28611	2611	150028344	SCREW FLOMATIC 6 32X5/8 SS
43	27540	1521-ORA	150028812	COVER,BLACK
44		770-E35	150028812	SOLENOID ASSEMBLY COMPLETE
45	28098	1028-S	150028597	LEVER SODA FLOMATIC
46	1066766	1028-W	150002103	LEVER WATER 424/464 VALVE
47		517-04	150002103	ELECTRIC RETAINER LEVER
48	28614	1525	150028341	COVER PB S15 FLOMATIC BLACK
49	123099	1600	150018393	COVER,PORTION CONTROL VLV,FLOMATIC
50		817-02	150018393	Plug Assembly 2 Pin
51	26834	817-03	150029014	PLUG ASSY. 3 PIN / 2 WIRE
52	26835	832-01	150029013	CONTROL PORTION MODULE 4 CUP
53	26836	805	150029012	SCREW,6/32 X 5/8,SS,FLOMATIC
54		802-01	150029012	PORTION CONTROL BRACKET
55		P35-1500	150029012	SOLENOID COMPLETE
56	26838	769-P25		BOARD PC SHUNT