

KIIRO°



TITAN<sub>by</sub> KIIRO°

---

MANUAL

**The TITAN By KIIRROO is to be used with the authorized FeelConnect app only.**

Downloading any third-party applications to control or interact with TITAN that are not mentioned above is done entirely at your own risk. In the event that a third-party application is downloaded, and it damages either the device software or hardware or leads to personal injury, neither KIIRROO nor any of their partners will be held liable. In the event

that third-party applications are downloaded, the device warranty will be void.

FeelRobotics, FeelTechnology and KIIRROO are constantly working to ensure their hardware and software are as secure as possible. We recommend updating your app and device every time there is an update to the latest versions in order to guarantee your safety.

Apple and the Apple logo are trademarks of Apple Inc., registered in the U.S. and other countries. App Store is a service mark of Apple Inc., registered in the U.S. and other countries.

Google Play and the Google Play logo are trademarks of Google Inc.

The Bluetooth® word mark and logos are registered trademarks owned by the Bluetooth SIG, Inc. and any use of such marks by KIIRROO is under license. Other trademarks and trade names are those of their respective owners.

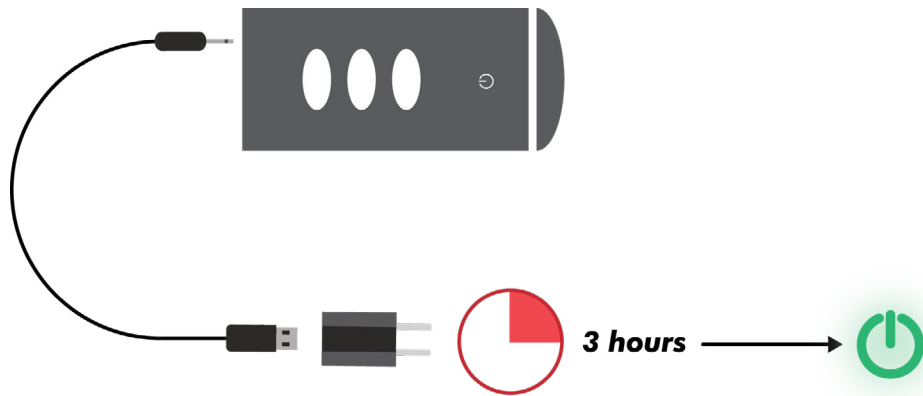
# Table of Contents

<b>1. Set up your device</b>	3
<b>2. Using your device</b>	4
<b>3. Modes</b>	5
3.1 Bluetooth Mode	
3.2 Manual Modes	
3.3 Automatic Modes	
<b>4. Charging and LED indicator</b>	7
4.1 Charging your device	
4.2 LED Indicators	
<b>5. Handling and Lubrication</b>	8
<b>6. Cleaning</b>	9
<b>7. Disclaimer and Warning</b>	10
<b>8. Disposal Specifications</b>	11
<b>9. Aftercare and Help</b>	12
<b>10. Problem solving chart</b>	13

# 1. Set up your device

1. Plug the pin charging cable into the base of TITAN and connect to a suitable USB port to charge. A solid **green** light will indicate that the device is fully charged.

**Please note:** charging may take up to 3 hours dependent on power source. Please refer to section 6 (page 12) for further information on charging.



2. Visit: <https://www.kiiroo.com/register-your-device/> to register your device and activate your 1-year warranty.
3. Visit [www.feelme.com](http://www.feelme.com) to create your user account and to access content.
4. Download the **FeelConnect app** to pair your TITAN with other compatible devices or content.

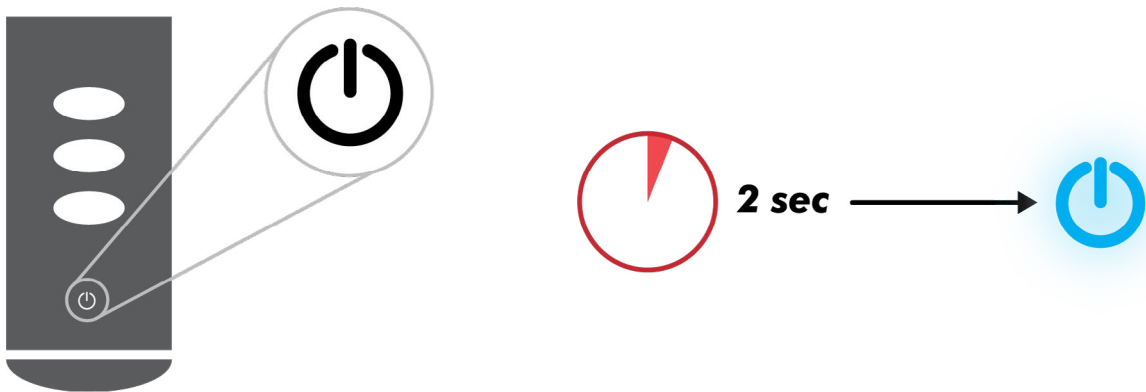


## 2. Using your device

1. Power on by pressing the multifunctional button at the bottom of the device and **hold for 2 seconds**.

The device responds with a quick vibration when turned on.

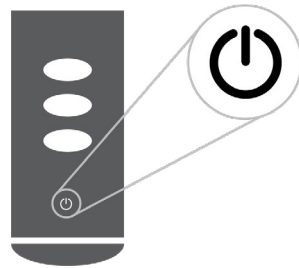
2. A **flashing blue** light shows that TITAN is now visible for pairing with your Bluetooth® device. It will turn **solid blue** once connected.



3. Push the button once. The light will turn white and now the device is in Automatic Mode. **By pushing the button, you will cycle through the modes to change the patterns.**
4. To turn off the device, **hold the multifunctional button for 4 seconds** until the light goes off.

# 3. Modes

The TITAN has 7 modes. To cycle through each mode:  
**Click the multifunctional button until you reach the mode of your choice.**



***MODE 1: BLUETOOTH (CONNECT TO CONTENT OR PARTNER)***

Once TITAN is on, it is in Bluetooth Mode. Download our app to sync your device to interactive content, or connect to a partner(s) device.

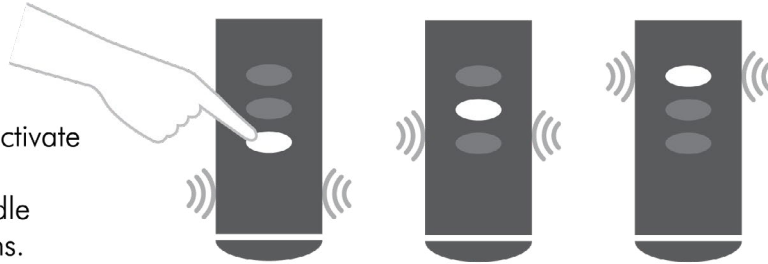
Learn how at: [www.kiiroo.com/connect](http://www.kiiroo.com/connect)

**MANUAL MODES**

**MODE 2:**

**TARGETED**

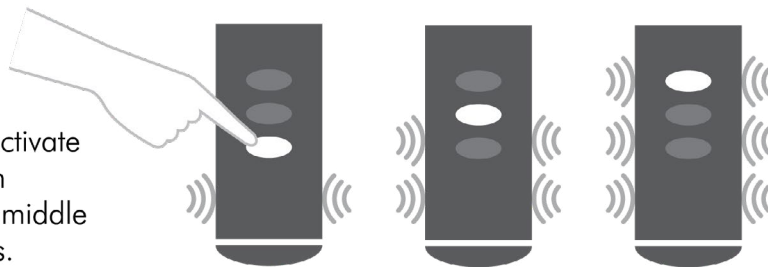
Use the touchpads to activate targeted vibrations: Bottom vibrations, middle vibrations, top vibrations.



**MODE 3:**

**TARGETED POWER**

Use the touchpads to activate targeted power: Bottom vibrations, bottom and middle vibrations, all vibrations.



**AUTOMATIC MODES**

**MODE 4:**

**AUTO**

The vibrations will move up and down simulating intercourse.

**MODE 6:**

**PULSE**

The vibrations will move from low to high in a loop, with small pauses in between.

**MODE 5:**

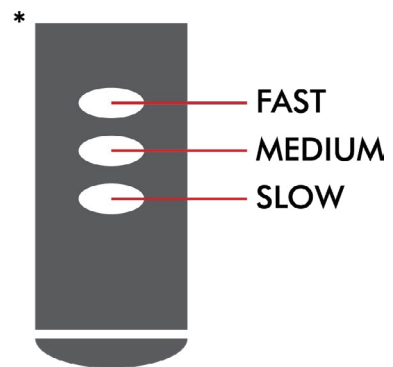
**BLOW**

The vibrations will move from low to high, one motor at a time, simulating fellatio.

**MODE 7:**

**ENDURANCE**

The vibrations will move up and down at different intensities: Soft, medium, hard vibrations.



*\*In the Automatic Modes, control the speed of the patterns by touching the touchpads.*

# 4. Charging and LED indicator

## 4.1 Charging

1. Insert the PIN charging cable provided into the hole located at the base of TITAN.
2. Insert the USB end of the cable into a suitable USB port.  
**Please note:** Charging by computer will exceed usual charging time.
3. Wait for the LED light to blink slowly, indicating TITAN is charging.
4. The light will glow solid **green** when TITAN is fully charged.
5. When the battery is low, the light indicator will prompt you to charge with a **red** flashing light.
6. The LED indicator will blink continually if the device is being updated\*.

## 4.2 LED Indicator

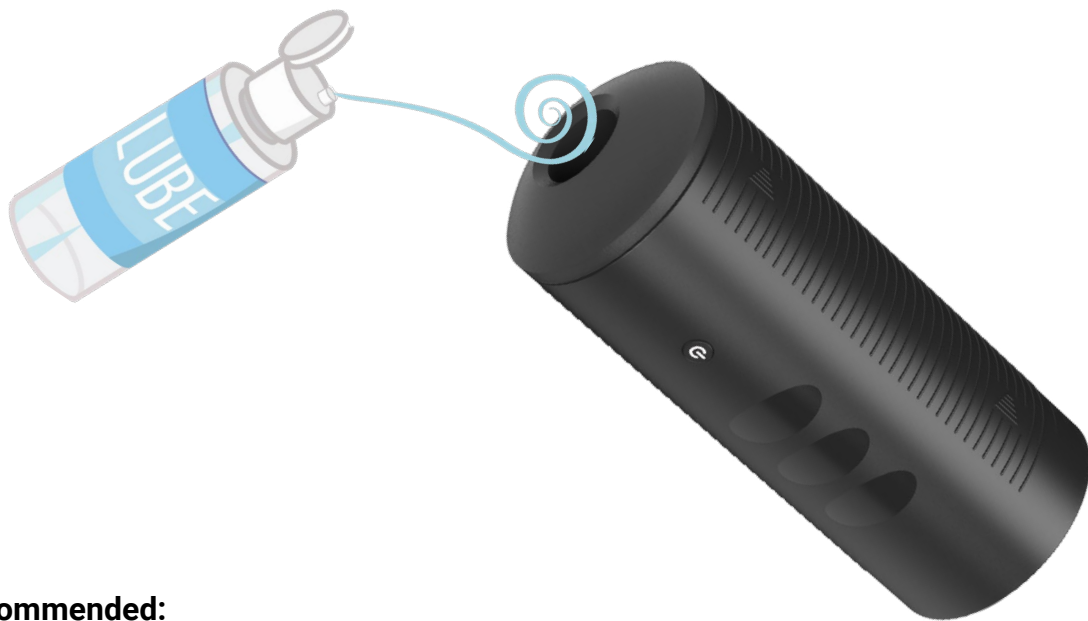
(Blinking <b>BLUE</b> )	Bluetooth mode, waiting for connection.
(Solid <b>BLUE</b> )	Bluetooth mode, connected.
(Solid <b>WHITE</b> )	Automatic / Manual modes.
(Blinking <b>WHITE</b> )	Charging.
(Solid <b>GREEN</b> )	Fully charged.
(Solid <b>RED</b> )	Battery low.



## 5. Handling and lubrication

### **ADVICE:**

Hold TITAN and apply a generous amount of water-based lubricant to the opening.



### **Recommended:**

1. Always use water-based lubricant.
2. Always use lubricant as it will prolong the lifespan of TITAN and give you the most comfortable experience.

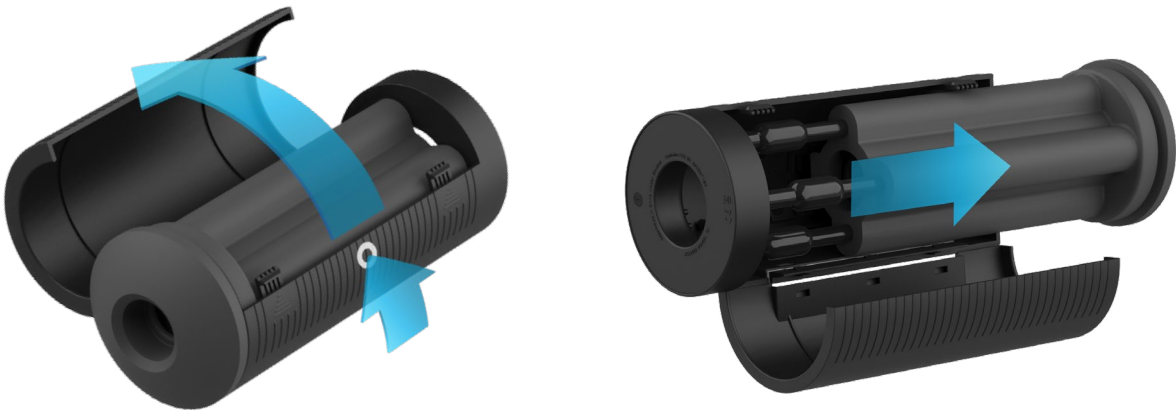
### **Do not use:**

1. Silicone lubricant as it will deteriorate the sleeve.
2. Massage oils or hand cream as lubricants.

## 6. Cleaning

**Always clean TITAN thoroughly after each use.**

1. Press the mechanism on the side of TITAN, open it and carefully pull the center sleeve away from the three motor modules.



2. Clean the Real-Feel Sleeve with warm water and a specialized toy cleaner.  
**Ensure TITANs Real-Feel Sleeve is completely dry before reassembling.**
3. Wipe the exterior of TITAN with cleansing wipes as **TITAN is not waterproof.**

### **Suggestion:**

- Add a tiny amount of water-based lubricant to the sleeve where the motor modules are inserted. This will make reassembling TITAN easier.
- Avoid cleaners containing alcohol, petrol or acetone and harsh soaps as this might damage the material of TITAN.
- Never submerge TITAN in liquid, it is not waterproof and doing so could pose a risk of electric shock.

## 7. Disclaimer and Warning

- We, KIIROO, make no medical claims with our devices.
- KIIROO devices are not to be used by or on minors (anyone under 18), or anyone who is unable or unwilling to express consent.
- Do not use KIIROO devices on inflamed or irritated areas.
- Follow all directions as set forth by the manual, and do not attempt to make any technical adjustments to your KIIROO device at home.
- KIIROO will not be held responsible for any undesirable results of misuse.
- If you have a pacemaker or other medical device, consult your doctor. If you experience pain or discomfort, then discontinue use immediately.

### **Do NOT use TITAN:**

- If there are exposed electronic elements
- If it is excessively hot to touch
- If it has been exposed to liquid of any sort
- Do not leave TITAN in direct sunlight and NEVER expose it to extreme heat
- Never use cleansers containing alcohol, petrol or acetone.
- Do not use heating appliances to dry the device.
- Avoid using harsh soaps as they can damage the material.

## 8. Disposal Specifications

While TITAN is made of eco-conscious materials, you should not dispose of TITAN in your waste bin. Like any electronic device with a rechargeable battery, there are disposal regulations. These vary by city and local municipality. Be aware of how electronics are disposed of where you live.

KIIRROO suggests asking your local council center. Also, consider that in your locality, TITAN may be considered bio-waste because of its intimate nature.

# 9. Aftercare and Help

## **Specifications:**

Materials:	ABS case, TPE sleeve, NBR bullet holders
Finish:	Matte with Gloss finger touch section
Size:	221mm in length, 87mm diameter
Weight:	857g
Battery:	Lithium-ion Polymer 1000 mAh
Charging:	3 hours
Usage time:	40 minutes

## **Help:**

If you have any further problems with setup and installation, or issues with using your device, do not hesitate to contact our customer service team.

Our customer service team are here to support, and resolve any problems in detail, to ensure your experience is nothing but pleasurable.

We try to answer all questions within 48 hours of receiving them.

## **For frequently asked questions visit:**

[www.kiiroo.com/faq](http://www.kiiroo.com/faq)

## **Contact:**

[info@kiiroo.com](mailto:info@kiiroo.com)

## **Opening hours:**

Mon - Fri, 9AM - 5PM CET.

10.

# Problem solving Chart

