



FLESHLIGHT
LAUNCH™
powered by:
KIRO°

SETUP GUIDE

Software Notice

The Fleshlight Launch Powered by KIIROO is to be used with the authorized FeelConnect app only.

Downloading any third-party applications to control or interact with the Fleshlight Launch that are not mentioned above is done entirely at your own risk.

In the event that a third-party application is downloaded, and it damages either the device software or hardware or leads to personal injury, neither KIIROO, Fleshlight™ nor any of their partners will be held liable.

Apple and the Apple logo are trademarks of Apple Inc., registered in the U.S. and other countries. App Store is a service mark of Apple Inc., registered in the U.S. and other countries.

Google Play and the Google Play logo are trademarks of Google Inc.

The Bluetooth® word mark and logos are registered trademarks owned by the Bluetooth SIG, Inc. and any use of such marks by KIIROO is under license. Other trademarks and trade names are those of their respective owners.

Hardware Notice

The Fleshlight Launch was designed to be used with original Fleshlight™ products only. The usage of any third party hardware product in combination with the Fleshlight Launch violates the terms of usage and warranty, and neither KIIROO nor Fleshlight™ will be liable for any damage sustained.

National Deviation 7.12.Z1

This appliance contains batteries that are non-replaceable.

For a part of class III construction supplied from a detachable power supply unit, the instructions state that the appliance is only to be used with the unit provided. The appliance is not to be used by persons with reduced physical, sensory or mental capabilities, or lack of experience and knowledge unless they have been given supervision or instruction.

FeelRobotics, FeelTechnology and KIIROO are constantly working to ensure their hardware and software are as secure as possible. We recommend updating your app and device every time there is an update to the latest versions in order to guarantee your safety.

TABLE OF CONTENTS

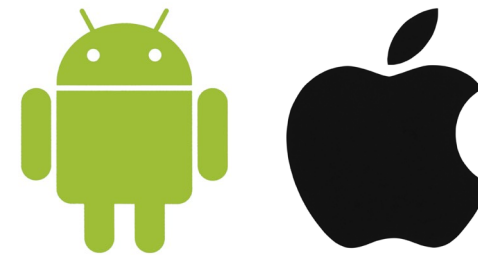
SETUP YOUR DEVICE	4	HANDLING	10
USING YOUR DEVICE	5	Lubrication	
		Cleaning	
DOWNLOAD THE FEELCONNECT APP	6	DISCLAIMER AND WARNINGS II	
MODES	7	DISPOSAL SPECIFICATIONS	12
Interactive Mode		AFTERCARE AND HELP	13
Manual Mode		Specifications	
SERVICES	8	FAQ	
CHARGING AND LED INDICATOR	9	Opening hours	
			14
		FCC Statement, ISED Statement	

SETUP YOUR DEVICE

Using the micro USB charger provided, charge your device until the green light turns solid; about 3-6 hours. We recommend charging the device fully prior to the first use.

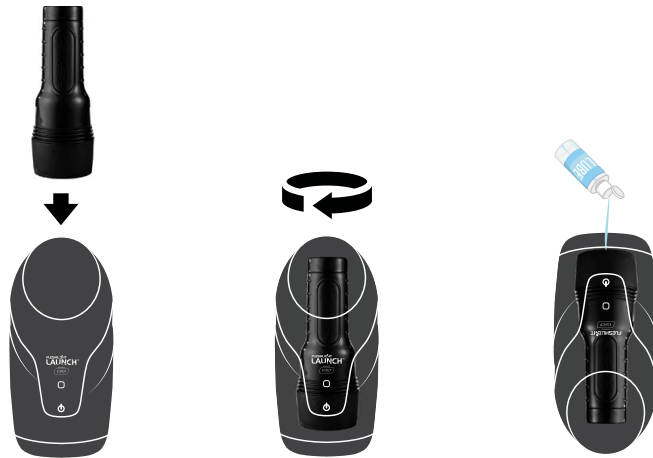
The charging port can be found behind the Flashlight Launch underneath the rubber charging cover.

1. Go to www.kiiroo.com to create your user account.
<https://www.KIIROO.com/my-account/>
2. Once you have created an account, please go to:
<https://www.KIIROO.com/pages/register-your-device> to register your device and activate your one (1) year warranty.
3. Download the [FeelConnect App](#) to pair your device with your mobile phone.



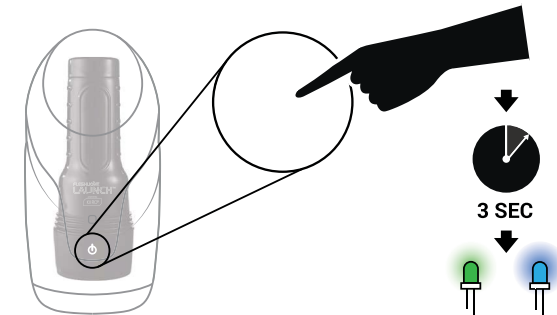
USING YOUR DEVICE

1. Insert the Fleshlight™ into the Launch.
2. Turn device until it locks in place.
3. Turn device around and lube the Fleshlight™ and yourself.

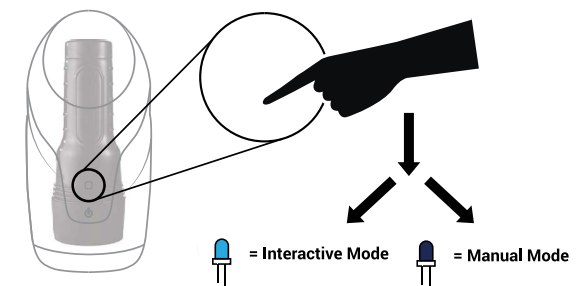


*The Fleshlight Launch was designed to be used with standard sized Fleshlight™ products only. The usage of any third-party hardware product in combination with the Fleshlight Launch violates the terms of usage and warranty, and neither KIIROO nor Fleshlight™ will be liable for any damage sustained.

5. Power on by pressing the “power button” (approximately 3 seconds) until the device comes on. The Fleshlight Launch is now in **Interactive Mode** (Go to page 7).
5. The flashing blue light indicates your device is in **Interactive Mode** and searching to connect (via Blue-tooth).



7. Slightly touch the blue light with your thumb until the blue light goes off; now you are in manual mode (Go to page 7).



8. To turn off the device: hold the “power button” for approximately 4 seconds.

DOWNLOAD THE FEELCONNECT APP

Please download the FeelConnect App and follow the instructions on how to pair your Fleshlight Launch to the app.

For detailed instructions please visit <https://www.kiiroo.com/pages/support>

The Fleshlight Launch is to be used with the authorized FeelConnect app only.

Disclaimer

Downloading any third-party applications to control or interact with Fleshlight Launch that are not mentioned above is done entirely at your own risk. In the event that a third-party application is downloaded, and it damages either the device software or hardware or leads to personal injury, neither KIIROO, Fleshlight or any of their partners will be held liable. In the event that third-party applications are downloaded, the device warranty will be void. FeelRobotics, FeelTechnology and KIIROO are constantly working to ensure their hardware and software are as secure as possible. We recommend updating your app and device every time there is an update to the latest versions in order to guarantee your safety.

MODES

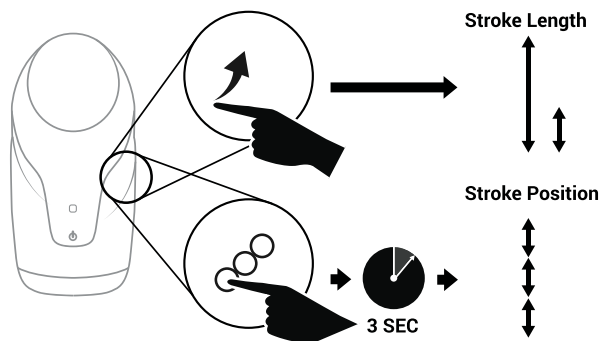
Interactive Mode; Indicated by a blue light.

1. To pair the Fleshlight Launch with content, follow the instructions on the FeelConnect App.
2. Go to FeelMe.com, click on "My Devices" in the top right corner, and scan the QR code to connect to the content of your choice.
3. For Step-By-Step instructions go to KIIRROO.com/FeelConnect

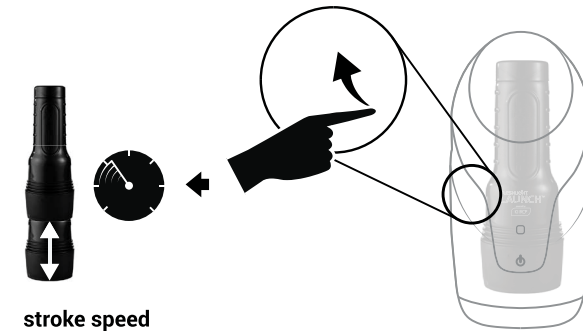
Manual Mode; Indicated by no light

Once the Fleshlight Launch is in **Manual Mode**:

1. Push the "power button" once and the Fleshlight Launch will automatically start stroking.
2. Swipe on the right side of the Fleshlight Launch to control the length of the stroke.



3. Swipe up on the left side to increase the speed and swipe down to decrease the speed.
4. Swipe up on the right side to increase the length and swipe down to decrease the length.



5. In order to stop the Fleshlight Launch, click the "power button" once.

SERVICES

Feel Your Lover

When paired online, the complementary devices give you the touch and intimacy you crave, from anywhere in the world.

Feel Videos

Our exclusive encoded porn videos will make you feel and see your favorite models making the moves that turn you on most.

Feel Virtual Reality

Use the devices in combination with all mobile VR glasses and Virtual Reality Porn. Experience high quality adult videos filmed in 180-degrees, with 3D stereoscopic views from head to toe.

Feel Webcam Models

Our webcam partners have a special interactive section on their website with performers ready to control your device. Every move the webcam models make can be felt through the device

Go to FeelMe.com to find a variety of interactive content.

CHARGING

1. Insert the USB cable into the Fleshlight Launch's charging port. The charging port is located at the back side of the Fleshlight Launch underneath the rubber cover.
2. Insert the other end into a USB port. This can be in a computer or wall adapter [Please note, wall adapter is NOT included in the box.] We recommend using a wall adapter as using a computer will exceed the 3-6 hour charging time.
3. Wait for the red LED light to blink slowly; this indicates that the Fleshlight Launch is charging.

4. The LED light will glow solid green when the Fleshlight Launch is fully charged.
5. When the battery is low, the LED indicator will prompt you to charge by flashing red. When the LED indicator Flashes red quickly, you will have approximately 5 minutes before the Fleshlight Launch disconnects from Bluetooth and turns off.
6. The LED indicator will blink blue-red-blue-red periodically if an update is available or if something has gone wrong.

POWER BUTTON:

- | | |
|----------------|--|
| Green ● | The device is fully charged |
| Red ● | The battery is low |
| Blinking red ● | The battery is critically low - 5 minutes until disconnect |

BLUETOOTH BUTTON:

- | | |
|-------------------------|--|
| Sudden red light ● | This indicates that there is a technical fault. Try to restart the device and re-insert the Fleshlight™. Contact customer service if this problem persists |
| (Blinking blue light) ● | Bluetooth-enabled and in Interactive Mode searching for mobile phone. |
| (Solid blue light) ● | Connected via Bluetooth to mobile phone |
| No Light | Manual Mode |

HANDLING

Lubrication

KIROO and Fleshlight™ recommend that you use KIROO Lube, Fleshlube™ or any other kind of water-based lubricant only.

Do not use:

- Silicone lubricant as it could deteriorate the Fleshlight™ sleeve material.
- Massage oil or hand cream as lubricants.

Cleaning

Always clean your Fleshlight™ sleeve thoroughly after each use.

1. Remove the Fleshlight™ from the Launch.
2. Remove the sleeve from the outer casing of the Fleshlight™.
3. Rinse the sleeve with warm water and KIROOpure™ intimate toy cleaner or Fleshwash™ and allow to air dry.
4. Rinse the outer casing or wipe down with antibacterial wipes.
5. Dry completely before placing the sleeve back in the casing.
6. After your Fleshlight™ sleeve has been air dried, use the Fleshlight Renewing Powder over your sleeve so that it remains smooth and soft.

DISCLAIMER & WARNINGS

KIIROO and Fleshlight™ make no medical claims with our devices.

This device is not to be used by or on minors (anyone under 18), or anyone who is unable or unwilling to express consent.

This device is not intended for persons with reduced physical, sensory or mental capabilities, or a lack of experience and knowledge, unless they have supervision or instruction concerning use of the device by a person responsible for their safety.

KIIROO and Fleshlight™ will not be held responsible for any undesirable results of misuse.

Follow all directions as set forth by the manual and do not attempt to make any technical adjustments to your Fleshlight Launch at home.

Do not use the Fleshlight Launch if there are exposed electronic elements.

Do not use the Fleshlight Launch if you are in a shower, bathtub, swimming pool, sauna steam room etc.

The Fleshlight Launch is NOT waterproof.

Do not use the Fleshlight Launch if it is excessively hot to touch.

Do not use the Fleshlight Launch and Fleshlight device on inflamed or irritated areas.

Avoid leaving your Fleshlight Launch in direct sunlight and NEVER expose it to extreme heat.

Never use cleansers containing alcohol, petrol or acetone.

Do not use heating appliances to dry the sleeve or device.

Avoid using harsh soaps as they can damage the sleeve material.

Always store the device out of reach of children.

DISPOSAL SPECIFICATIONS

While the Fleshlight Launch is made from eco-friendly materials, you should not dispose of the Fleshlight Launch in your waste bin. Like any other electronic device with a rechargeable battery, there are disposal regulations. These regulations vary by local municipality, city and by country. Be aware of how electronics are disposed of where you live. KIIROO and Fleshlight™ suggest you ask your local council center.

Also, consider that in your locality, Fleshlight Launch may be considered bio-waste because of its intimate nature.



AFTERCARE AND HELP

Specifications:

Materials: PC ABS, PU Coating; non-porous, chroming, silicone.
Finish: Matte, Chrome
Size: 320 x 157 x 167 mm
Weight: \pm 1500 g without Fleshlight \pm 2000 g with Fleshlight
Charging: 3-6 hours
User time: 2 hours

Help

If you have any further problems with setup and installation or issues with using your device, please do not hesitate to contact our Customer Service team. Our team is there for your support and to explain solutions to your problems in detail. We try to make your online experience run as smoothly as possible. We aim to answer all questions within 48 hours of receiving them.

For frequently asked questions visit:

www.KIIROO.com/faq
www.KIIROO.com
info@KIIROO.com
+31207371194

Opening hours are:
Mon - Fri, 9AM - 5PM CET.

Fleshlight™

www.fleshlight.eu/pages/faq
customerservice@fleshlight.com
[International orders: +1-512-865-5266](tel:+15128655266)

Opening hours are:
Mon - Fri, 9AM - 5PM CST.

FCC Statement

This equipment has been tested and found to comply with the limits for a Class B digital device, pursuant to Part 15 of the FCC Rules. These limits are designed to provide reasonable protection against harmful interference in a residential installation.

This equipment generates, uses and can radiate radio frequency energy and, if not installed and used in accordance with the instructions, may cause harmful interference to radio communications. However, there is no guarantee that interference will not occur in a particular installation. If this equipment does cause harmful interference to radio or television reception, which can be determined by turning the equipment off and on, the user is encouraged to try to correct the interference by one of the following measures:

Reorient or relocate the receiving antenna.

Increase the separation between the equipment and receiver.

Connect the equipment into an outlet on a circuit different from that to which the receiver is connected.

Consult the dealer or an experienced radio/TV technician for help.

To assure continued compliance, any changes or modifications not expressly approved by the party responsible for compliance could void the user's authority to operate this equipment. (Example - use only shielded interface cables when connecting to a computer or peripheral devices).

This equipment complies with FCC RF radiation exposure limits set forth for an uncontrolled environment. The antenna(s) used for this transmitter must be installed to provide a separation distance of at least 20 cm from all persons and must not be co-located or operating in conjunction with any other antenna or transmitter"

This device complies with Part 15 of the FCC Rules. The operation is subject to the following two conditions:

1. This device may not cause harmful interference, and
2. This device must accept any interference received, including interference that may cause undesired operation.

ISED Statement

This device complies with Industry Canada license-exempt RSS standard(s).

Operation is subject to the following two conditions:

1. this device may not cause interference and
2. this device must accept any interference, including interference that may cause undesired operation of the device.

To comply with RSS 102 RF exposure compliance requirements, for mobile configurations, a separation distance of at least 20 cm must be maintained between the antenna of this device and all persons. This device must not be co-located or operating in conjunction with any other antenna or transmitter.

Le présent appareil est conforme aux CNR d'Industrie Canada applicables aux appareils radio exempts de licence.

L'exploitation est autorisée aux deux conditions suivantes :

1. l'appareil ne doit pas produire de brouillage, et
2. l'utilisateur de l'appareil doit accepter tout brouillage radioélectrique subi, même si le brouillage est susceptible d'en compromettre le fonctionnement.

Pour se conformer aux exigences de conformité CNR 102 RF exposition, pour des configurations mobiles, une distance de séparation d'au moins 20 cm doit être maintenue entre l'antenne de cet appareil et toutes les personnes. Cet appareil ne doit pas être colocalisés ou fonctionnant en conjonction avec une autre antenne ou transmetteur.