



PR Tilt Grill Lights

Commercial Lighting Specifications



Model Versions



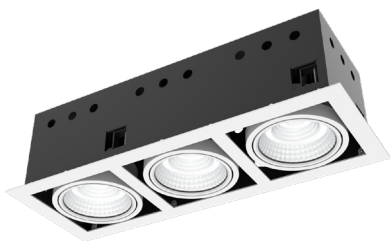
PR Tilt Grill Light - 1 x 30W - 4000K - 3YR

Model Number: **EL-3001**



PR Tilt Grill Light - 2 x 30W - 4000K - 3YR

Model Number: **EL-3002**



PR Tilt Grill Light - 3 x 30W - 4000K - 3YR

Model Number: **EL-3003**



PR Tilt Grill Light - 4 x 30W - 4000K - 3YR

Model Number: **EL-3004**

Key Features



EFFICIENCY

110 Lumen/Watt



CCT

4000K



BEAM ANGLE

60°



IP RATING

IP20



WARRANTY

3 YEARS

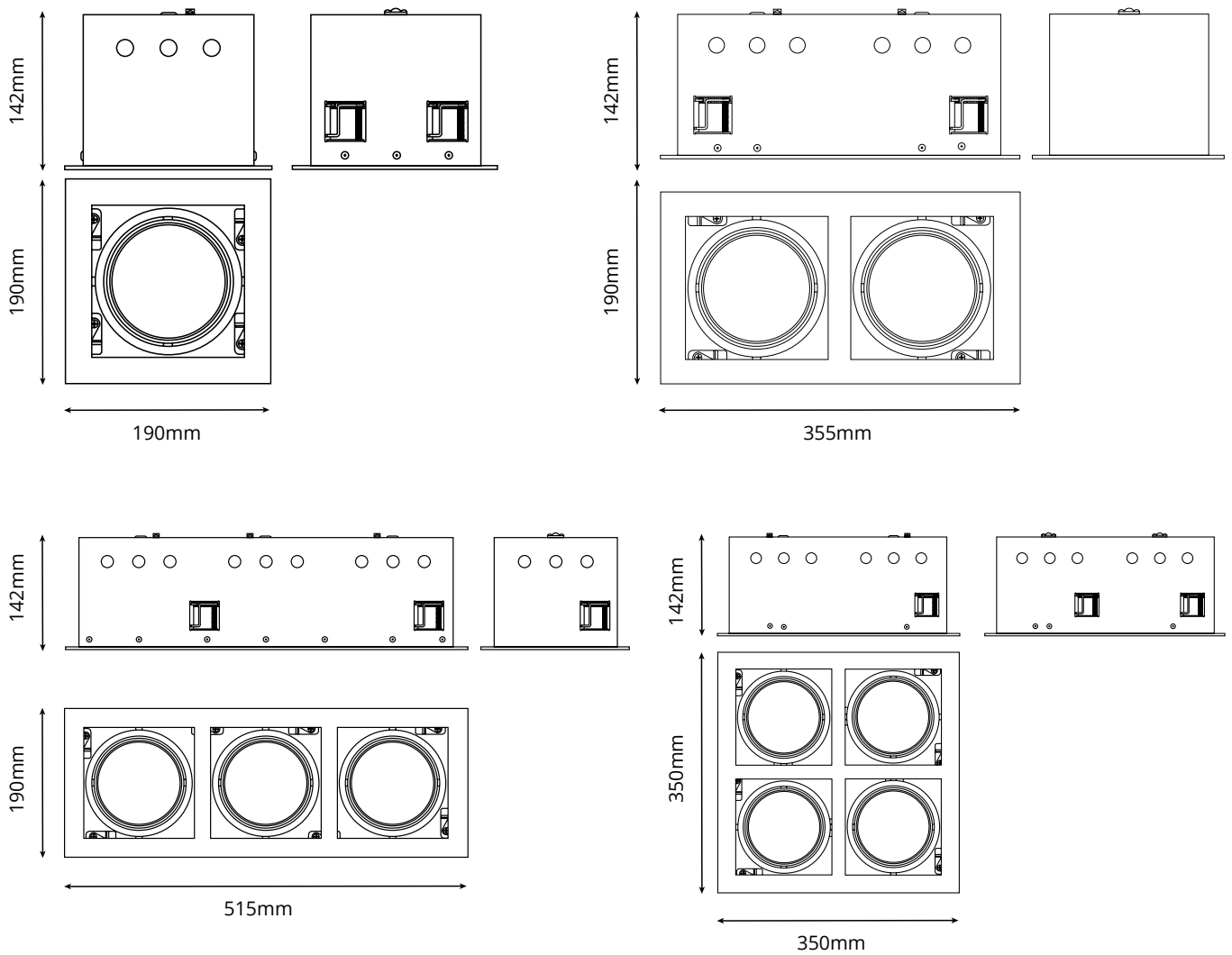
- Ideal for spot lighting in retail environment
- Single, Double, Triple & Quad Head options
- Low operational cost and 60% energy saving compared to compact fluorescent
- Recessed mounting
- 30 degrees tilt-able, 360 degrees rotatable
- Various beam angles, CCT and power options available on order

Model	Draw Power (W)	Luminous Flux (Lumen)	LED Colour (CCT)	Colour Rendering Index (CRI)	Beam Angle
EL-3001 - 1 X 30W	30W	2700	4000K	>80	60°
EL-3002 - 2 X 30W	60W	5400	4000K	>80	60°
EL-3003 - 3 X 30W	90W	8100	4000K	>80	60°
EL-3004 - 4 X 30W	120W	10800	4000K	>80	60°

Specifications

Power Factor	PF > 0.9	Input Voltage	AC 220V-240V 50/60Hz
IP Rating	IP20	Protection	CLASS II, Does not require earth connection
LED Chip Type	Bridgelux COB-1pc	Housing Material	Die-cast aluminium housing, heavy duty cover
Driver Type	Lifud Non-Flicker	Colour	Black and White

Dimensional Drawing





Dimensions and Weight

Model	Fitting Dimensions	Cut Out Dimensions	Unit Net Weight
EL-3001 - 1 X 30W	190mm x 190mm x 142mm	160mm x 160mm	1.225 kg
EL-3002 - 2 X 30W	355mm x 190mm x 142mm	320mm x 160mm	2.375 kg
EL-3003 - 3 X 30W	515mm x 190mm x 142mm	480mm x 160mm	2.5 kg
EL-3004 - 4 X 30W	350mm x 350mm x 142mm	320mm x 320mm	5.5 kg

Product Warranty

3 Years Warranty

Certifications

