



HOME > PRODUCTS > PROJECTORS > **EPSON EB-2155W**

## Epson EB-2155W



[+ ENLARGE IMAGE](#)

### Corporate Portable Multimedia Projectors

### Change the way you do meetings

If you are interested in purchasing an Epson Projector please call **0800 377 664** to discuss your requirements or to find projector resellers in your area.

[Printer Friendly Specs](#)

[Distance Calculator](#)

[Download](#)



## Overview

### KEY FEATURES & BENEFITS

- 3 x Brighter Colours and reliable performance\* – 3LCD, 3-Chip Technology. Look for both high colour brightness and high white brightness
- Crisp Clear Resolution – Featuring WXGA (1280 x 800)
- Versatile Connectivity – Easily integrate with any system with HDMI and MHL
- Wireless Functionality – Wi-Fi
- Gesture Presenter – Simply move your hand in front of the presentation
- Split Screen – simultaneously project two images, video or still, side by side, from two different sources
- Epson iProjection™ – Wirelessly display and control content from your iPhone®, iPad®, iPod touch® and Android™ devices
- USB Display Function – Project via a simple USB cable connection without having to change the monitor output setting on the PC
- Automatic Setup – The Automatic Screen Fit function adjusts focus, zoom, horizontal and vertical keystone all at the touch of a button
- Remote Network Monitoring and Control – Plus Message Broadcasting and built-in schedule functions with EasyMP® software / Multi-PC Projection



#### 3x Brighter Colours with Epson\*

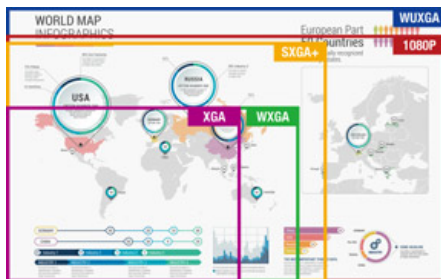
Brilliant image quality requires high colour brightness (colour light output), and Epson® 3LCD projectors have 3 x Brighter Colours than leading competitive projectors\*.

One brightness measurement (lumens) is not enough. A projector's specification needs to show both high colour brightness and high white brightness. If colour brightness is lower than white brightness, images may be dark, dull and lose detail. If not provided, be sure to ask for a projector's colour brightness specification.

*\* Compared to leading 1-chip DLP business and education projectors based on NPD data, July 2011 through June 2012. Colour brightness (colour light output) measured in accordance with IDMS 15.4. Colour brightness will vary depending on usage conditions.*

#### 3LCD technology

All Epson projectors are based on 3-chip LCD technology for amazing colour, incredible detail and solid reliability. 3LCD's 3-chip architecture dedicates an entire chip to process each primary colour – red, green and blue, continuously. Unlike single-chip technology that delivers colour sequentially, you get full-time colour. The result is vibrant, realistic images and video all delivered with 3LCD's true-to-life colour.



#### Brilliant high definition image up to 300"

Featuring native resolution up to WUXGA (1920 x 1200), the Epson EB-2000 series delivers high quality images and crisp, sharp text without any distortion.

Images can be projected on a large screen with no information left out. This applies to video output devices such as PCs and smart devices with their ever increasing image quality and higher definition and accommodates a variety of content including 3D CAD, digital broadcasts, Blu-ray, and internet movies.

#### High brightness

Even though its light weight and compact size enables it to be carried from room to room, the projector is capable of highly visible images thanks to its high brightness (up to 5,500lm) and superior 15,000:1 contrast ratio. Room lights don't have to be dimmed to see bright and clearly projected images, allowing meeting participants to concentrate better for improved meeting productivity.

#### Epson iProjection App

Display and control content from your iPhone, iPad or iPod touch, Android and Chrome devices with the Epson iProjection App. This free application allows road warriors to travel light and present from their mobile devices. The app is easy to use and intuitive menu options bring your content to the bigger screen.



**Auto V/H keystone and screen fit**

In cases where the image extends beyond the frame of the screen or whiteboard you just have to push the "Screen Fit" button and the image frame automatically matches up with the edges of the screen.



**Auto power on feature**

The projector starts automatically upon connecting a VGA\*, HDMI\*\*, or USB cable to the device itself. This feature means you no longer have to use the power on button because startup is activated with cable insertion.

\*VGA auto power on is available with Computer 1 only

\*\*HDMI auto power on is available with HDMI1 only



**Gesture presentation**

Present smarter with newly added 'gesture presentation' function. Simply move your hand in front of the arrows, and make your presentation more engaging and realistic with the audience.



**Split Screen**

Split Screen allows you to display content from two inputs simultaneously, side by side, on a single screen. With three layout options you can display video and presentation materials, and run video on both screens.

	PC1	PC2	Video	HDMI1	HDMI2	USB-B	USB-A	RJ45	Wi-Fi (AP10)	Screen Mirroring
Computer1		N/A	Yes	Yes	Yes	Yes	Yes	Yes	Yes	Yes
Computer2	N/A		Yes	Yes	Yes	Yes	Yes	Yes	Yes	Yes
Video	Yes	Yes		Yes	Yes	Yes	Yes	Yes	Yes	Yes
HDMI1	Yes	Yes	Yes		N/A	Yes	Yes	Yes	Yes	N/A
HDMI2	Yes	Yes	Yes	Yes		Yes	Yes	Yes	Yes	N/A
USB-B	Yes	Yes	Yes	Yes	Yes		N/A	N/A	N/A	Yes
USB-A	Yes	Yes	Yes	Yes	Yes	N/A		N/A	N/A	Yes
RJ45	Yes	Yes	Yes	Yes	Yes	N/A	N/A		N/A	Yes
Wi-Fi	Yes	Yes	Yes	Yes	Yes	N/A	N/A	N/A		N/A
Screen Mirroring	Yes	Yes	Yes	N/A	N/A	Yes	Yes	Yes	N/A	

**New home screen**

New home screen offers quick and easy access to a variety of useful functions. Also, all source information, no matter what the source input is, can be seen at a glance. Wireless connections can be made easily because all the information you need is right there on the screen.



**EasyMP Multi-PC projection**

The EasyMP Multi PC Projection application makes it possible to connect with up to 50 computers and partition the screen for split screen projection.

The moderator can select up to 4 of the connected devices and project their screens from the projector, maintaining control and preventing interference with the projected screen.

**EasyMP Monitor**

With EasyMP Monitor, Epson's network monitoring and control software, a single PC can see which projectors are available and if they are running efficiently, even across the biggest of networks. This series can be configured remotely, with instant email alerts for pre-defined critical indicators such as non-functioning devices or overheating lamps. Each projector's serial number can also be accessed remotely via LAN/serial connection.

**Wireless LAN Enterprise security**

The EB-2000 series projectors now include 'WPA-Enterprise security' mode to connect in robust integrated network environment; compatible with WPA, WPA2-PSK and WPA2-EAP security protocols.

**Longer lamp life**

The long 10,000H\* lamp life saves time and money by reducing the frequency of costly lamp replacements.

\*Power Consumption: ECO mode

**Connectivity Panel****Specification**

PRODUCT NAME	Epson EB-2155W
PRODUCT CODE	V11H818053
EAN	9314020623783
<b>TECHNOLOGY</b>	
Projection System	Epson 3LCD, 3-chip technology
LCD Panel	0.59-inch panel
<b>OPTICAL</b>	
Zoom	1-1.6 (Optical Zoom)
Screen Size	29" to 280" [0.85m to 8.45 m] (Zoom: Wide) 29" to 280" [1.40m to 13.71 m] (Zoom: Tele)
Projection Distance	60" screen 1.79m - 2.92m
Throw Ratio	1.38 (Zoom: Wide), 2.24 (Zoom: Tele)
Projection Lens F Number	1.51 - 1.99
Projection Lens Focal Length	18.2mm - 29.2mm
Focus Method	Manual Focus
Offset	10:0
<b>IMAGE</b>	
Colour Light Output	5,000 Lumens
White Light Output	5,000 Lumens
Resolution	WXGA
Native Aspect Ratio	16:10
Contrast Ratio	15,000:1
Lamp Hours	Normal/Eco: 5,000/10,000 Hours
Lamp Type	300W UHE
Keystone Correction	Vertical: -30 to +30 degrees Horizontal: -30 to +30 degrees
<b>CONNECTIVITY</b>	
Input: Video	1 x RCA (Yellow)
Input: Computer	2 x D-sub 15-Pin (RGB), 1 x USB 2.0 type B
Input: USB Memory Device	1 x USB Type A
Input: Three-In-One USB Display	1 x USB 2.0 type B
Input: Digital	2 x HDMI (1 x MHL)
Input: Audio	1 x RCA (Red/White), 2 x Stereo mini jack
Input: Control	1 x USB 2.0 type B, 1 x RS232C
Input : HDBaseT	NA

Input: Epson USB Document Camera	1 x USB 2.0 type A
Network I/O:	1 x RJ45 (100Mbps)
Wireless Connectivity	Included
WiDI/Miracast	NA
Output: Video	1 x D-sub 15 pin (black moulding)
Output: Audio	1 x Stereo mini jack
Speaker Output	16W
<b>ADVANCED FEATURES</b>	
EasyMP Network & Control	Yes
EasyMP Network Projection	Yes
PC Free Presentations	Yes
USB Plug 'n Play	Yes
AV Mute Slide	Yes
Instant Off	Yes
Auto Power On	Yes
Direct Power On/Off	Yes
Security	Padlock & Security Cable Hole Kensington®-style lock provision Wireless LAN Unit Lock Password protect function
Colour Modes	Dynamic, Presentation, Cinema, sRGB, Blackboard, DICOM SIM
<b>GENERAL</b>	
Dimensions D x W x H (excluding feet)	291 x 377 x 101 mm
Weight	4.5kg (approximate)
Compatible lamp model	ELPLP95 (New)
Lamp Warranty	12 months or 750 hours*
Projector Warranty	3 Years
Power Consumption: Lamp on	Normal/Eco: 420/350W
Power Consumption: Standby	0.5W (communication off)
Noise Level	Normal/Eco: 39/29dB

\* Which ever comes first. For more information visit [Epson Projector Warranty](#)

PRODUCT OPTIONS	Item Code	Description
	ELPLP95 Replacement Lamp	V13H010L95
	ELPAF41 Replacement Air filter	V13H134A41
	ELPMB23 Ceiling Mount (Standard)	V12H003B23
	Extension Pole 668-918 mm	V12H003P13
	Extension Pole 918-1,168 mm	V12H003P14
	Soft Carrying Case – ELPKS68	V12H001K68
	ELPAP10 Wireless LAN Adapter	V12H731P01
	ELPSC21B 80" Portable tripod screen	V12H002S2Y

Epson is the registered trademark of Seiko Epson Corporation. Epson ESC/P2 and Epson Stylus are trademarks of Seiko Epson Corporation. MicroDot is a trademark of Epson Australia Pty Limited. All other product names and other company names used herein are for identification purposes only and may be the trademarks or registered trademarks of their respective owners. Epson disclaims any and all rights in those marks. Specifications are subject to change without notice.

Equipment supplied by Epson Australia is designed to function in conjunction with genuine Epson consumables and accessories specifically configured for it.

#### Usage Conditions

Epson products are designed and made to give highly reliable use and long life when used according to its specifications. With any system, product or device used in situations where human life may be involved or at risk, Epson advises that you should take all necessary steps to ensure the suitability of your Epson product for inclusion in your system, and recommends that you include fail-safe procedures and redundancy support or backup equipment in your system, to maintain the maximum safety margin and optimum system reliability. Examples include but are not limited to – do not interfere with any electrical components within the device, do not use items supplied with the product for purposes other than as intended by Epson (ie mains cords, inks, CDs, plastic wrapping) and do not make modifications to the product.

## Consumables

ACCESSORIES & OPTIONS	PRODUCT CODE
<b><u>Soft Carrying Case – ELPKS68</u></b>	V12H001K68
<b><u>ELPSC21B 80" Portable Tripod Screen</u></b>	V12H002S2Y
<b><u>ELPFP13 Extension Pole - 450mm</u></b>	V12H003P13
<b><u>ELPFP14 Extension Pole - 918mm to 1,168mm</u></b>	V12H003P14
<b><u>ELPAP10 Wireless LAN Adapter</u></b>	V12H731P01
<b><u>Replacement Lamp ELPLP95</u></b>	V13H010L95

Epson is the registered trademark of Seiko Epson Corporation. Epson STYLUS, PerfectPicture, MicroPiezo, AcuPhoto Halftoning, QuickDry are the trademarks of Seiko Epson Corporation. All other names and company names used herein are for identification purpose only and may be the trademarks or registered trademarks of their respective owners. Epson disclaims any and all rights in those marks. All print samples shown herein are imulations. Specifications are subject to change without notice.

HOME > PRODUCTS > PROJECTORS > **EPSON EB-2155W**

Copyright © 2011 Epson Australia Pty Ltd, Trading as Epson New Zealand. All rights reserved. EPN01.