

# Phoenix 340W

SKPHX-340-000-V1-XX-XXX-XXXX-XXXX

Spec Sheet Rev 1.0

## Product Description

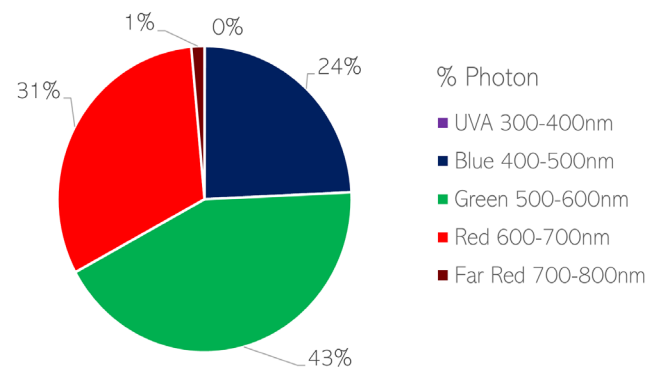
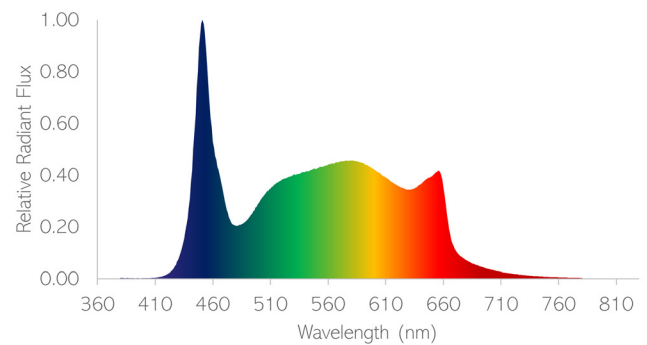
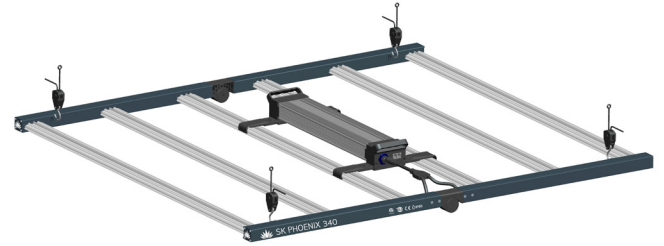
Spectrum King Phoenix 340W is the industry's most powerful LED grow light with a blue-rich spectrum designed for vegetative growth.

SK Cryo-Therm cooling technology enables an ultra slim form factor, allowing for maximum airflow and minimizing microclimates. It is unrivaled in performance and reliability in its class. Optimized for single or multi-tier cultivation in proximity to the canopy.

DLC 2.1 listed and qualified for additional local rebates.

## Performance Summary

PPF (400-700nm) <sup>1</sup>	950 umol/s
PPE (400-700nm)	2.80 umol/J
Input VAC (50/60 Hz)	120-277V 240-480V
Input Power @ 277VAC	340W
Cooling BTU @ 277VAC	1159
Operating Temp	-4 to 113°F (-20 to 45°C)
IP Rating	65, Wet Location
LED Lifetime	Q90 = 62,000hrs
Warranty <sup>2</sup>	5yrs
Weight (Frame + Driver)	17lbs (7.7kg)
Number of Bars	6
Min Height	6" (152mm)
Coverage Area	4x4'
Dimmable <sup>3</sup>	Dim to Off, 10-100% Resistive
Beam Angle	120°
Dimensions (lwh)	47x43x4.3" 1195x1095x109mm
Dual Surge Immunity	10kV Driver 1.5kW per Board
Certifications	DLC, ETL, CE



Depicted spectrum is a visual representation of the F1 spectrum. Results will vary.



<sup>1</sup> 7% Tolerance

<sup>2</sup> Limited Warranty can be found at: [www.spectrumkingled.com/warranty](http://www.spectrumkingled.com/warranty)

<sup>3</sup> Requires compatible 0-10V Controller or Manual Dimmer Knob (sold separately)

## Photometrics

Lumen <sup>1</sup>	61,000 lm
Efficacy	179 lm/W
CCT	5000K
CRI	90

<sup>1</sup> Lumen photometrics are for reference only

## AC Input Table (120-277VAC)

VAC	120	208	220	240	277
AC Current	2.9	1.6	1.6	1.4	1.2
AC Wattage	351	343	342	341	340
PF	1.00	0.99	0.99	0.98	0.97
Input Freq	50/60	50/60	50/60	50/60	50/60
BTU	1196	1169	1168	1164	1159
THD	<10%	<10%	<10%	<10%	<10%

## AC Input Table (200-480VAC)

AC	220	240	277	308	480
AC Current	2.9	1.6	1.6	1.4	1.2
AC Power	351	343	342	341	340
PF	1.00	0.99	0.99	0.98	0.97
Input Freq	50/60	50/60	50/60	50/60	50/60
BTU	1196	1169	1168	1164	1159
THD	<10%	<10%	<10%	<10%	<10%

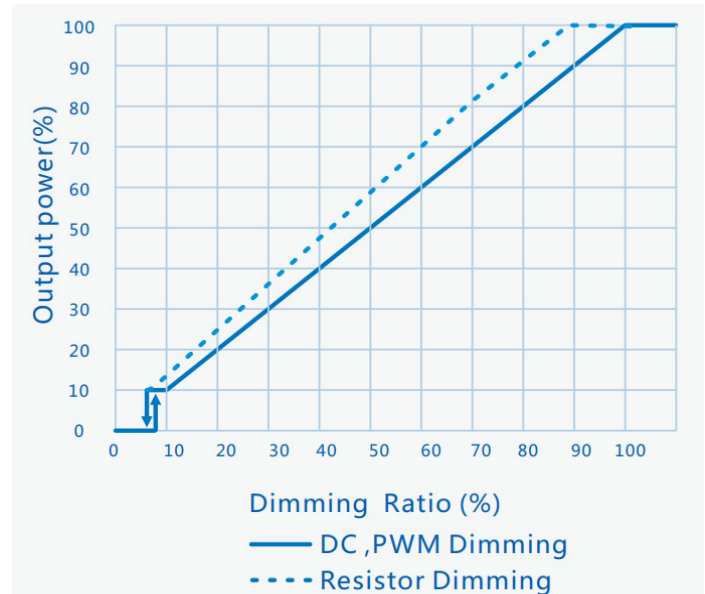
## Fixture Dimensions

Description	Dimensions in (mm)	Weight lbs(kg)
Engine	47.2x43.1x2.0" 1199x1096x52 mm	12 lbs 5.4 kg
Fixture	47.2x43.1x4.3" 1199x1096x111 mm	17 lbs 7.7 kg
120-277V Driver	13.6x3.7x2.3" 345x93x59 mm	4.6 lbs 2.1 kg
200-480V Driver	13.6x3.7x2.3" 345x93x59 mm	4.6 lbs 2.1 kg
Box	45.2x25.5x3.5" 1150x650x90 mm	21 lbs 9.5 kg

## Part Number

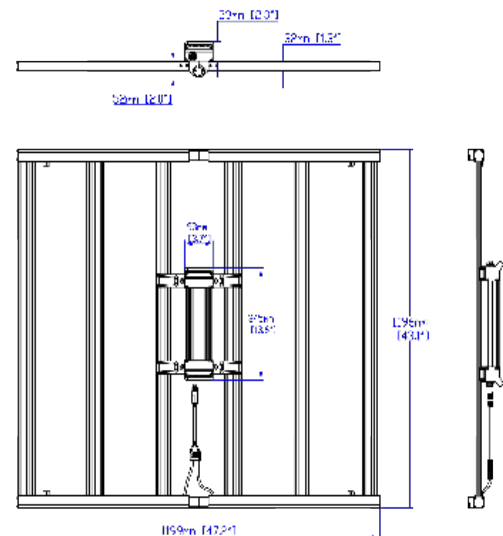
Family		Watts		Model		Spectrum		Input Voltage		AC Power Cord		AC Plug		DC Ext Cord		Mounting Hardware		Packaging		Internal
Code	Name	Code	Name	Code	Name	Code	Name	Code	Name	Code	Name	Code	Name	Code	Name	Code	Name	Code	Name	Code
SKPHX	Phoenix	340	340	000	Standard	V1	V1	01	120-277	0	10 ft	0	NEMA 5-15p	0	None	CT	Cable Ties/Pulley	00	Single	0000
								02	277-480			1	NEMA 6-15P	6	6ft	RM	Driver Hangers			
												2	NEMA L7-15P							
												3	NEMA L7-20P							

## Dimming Curve



## Dimming @ 277VAC, 60 Hz (120-277VAC)

Dimming	100%	90%	80%	40%	10%
Wattage	340	306	272	136	34
PF	0.97	0.97	0.96	0.87	0.61
PPF	950	876	785	406	105
PPE	2.80	2.86	2.88	2.98	3.08
BTU	1159	1043	928	464	116

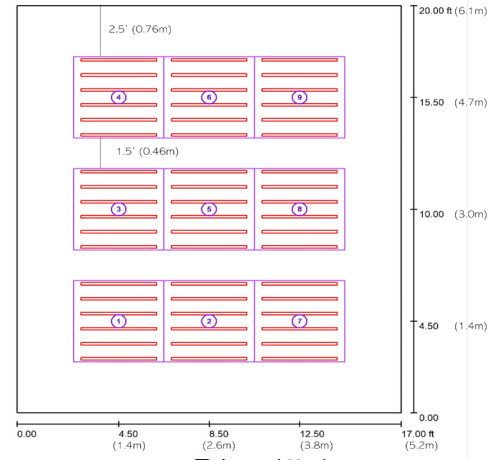


## PPFD Maps

The Phoenix 340W is designed for cross-illumination for maximum uniformity. PPFD maps below show the center 4x4 canopy (#5) and edge 4x4 canopy (#1). To better represent a grow room, the center plot is simulated without wall reflectivity. The edge plot has wall reflectivity enabled (70%). Each plot was simulated using 81 measurement points.

### Room Dimension

Room	20x17x12' (6.1x5.2x3.7m)
Wall to Canopy	2.5' (0.76m)
Aisle between Canopy	1.5' (0.46m)

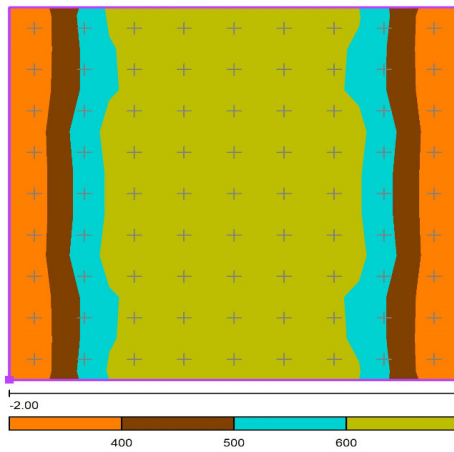


### 6" (150mm) from Canopy

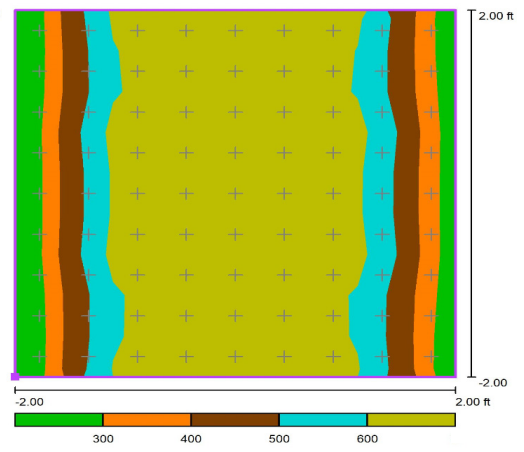
Center	
PPFD Avg	564
Min/Avg	0.54
Min/Max	0.42

Edge	
Avg	562
Min/Avg	0.47
Min/Max	0.35

### Center (#5)



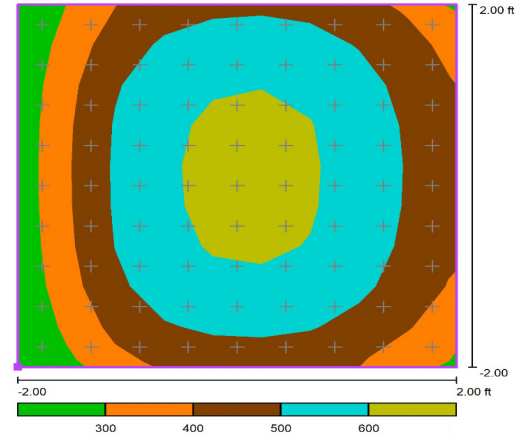
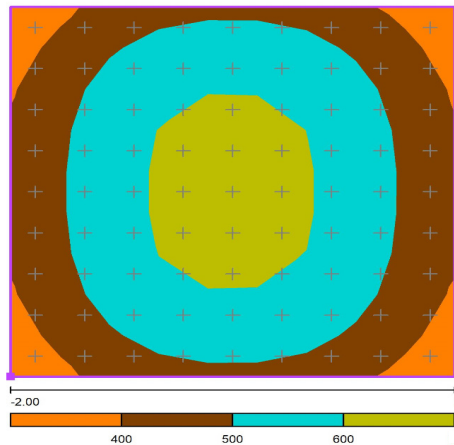
### Edge (#1)



### 12" (305mm) from Canopy

Center	
PPFD Avg	532
Min/Avg	0.71
Min/Max	0.59

Edge	
PPFD Avg	493
Min/Avg	0.48
Min/Max	0.38



### 24" (610mm) from Canopy

Center	
PPFD Avg	474
Min/Avg	0.87
Min/Max	0.78

Edge	
PPFD Avg	398
Min/Avg	0.53
Min/Max	0.43

