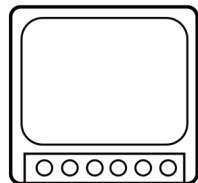
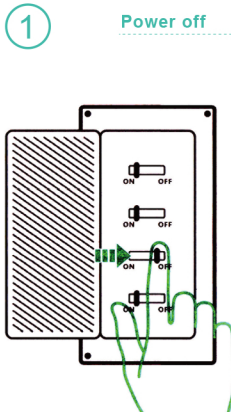


# DIY MINI Smart Switch

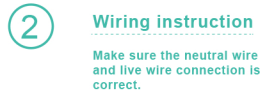
Quick Installation Guide V 1.0



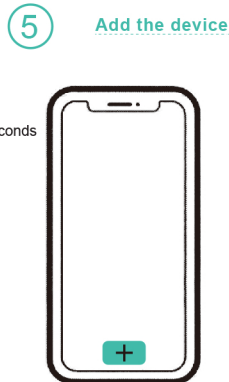
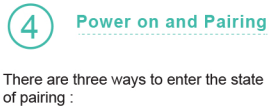
Wi-Fi DIY Smart Switch



To avoid electric shocks, please consult the dealer or a qualified professional for help when installing and repairing! Please do not touch the switch during use.



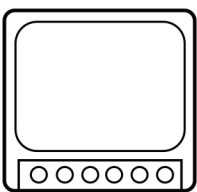
S1/S2 can connect with the rocker light switch (the self-return rocker light switch is not supported) or doesn't connect. To ensure safety, do not connect the neutral wire and live wire to it.



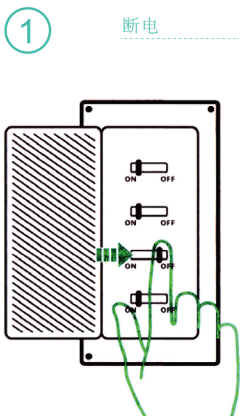
Input	AC 100-240V	50/60Hz
Output	AC 100-240V	50/60Hz
Maximum current	10A /16A	
For LED	Max 150W	
WiFi	IEEE 802.11 b/g/n	
Material	PC V-0	
APP	Smart Life	



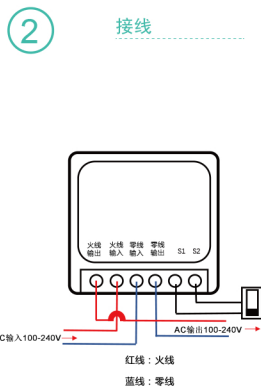
# mini智能开关说明书



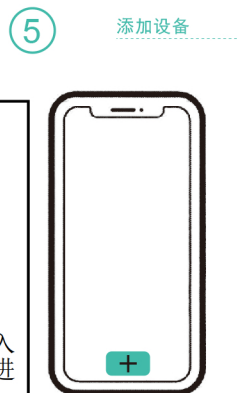
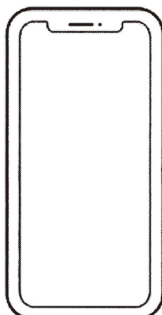
mini智能开关



设备安装、故障维修请由专业资质电工操作，以免发生触电危险！设备在正常使用的情况下不可触碰。



S1/S2接或不接机械开关两端（不支持自动回弹的机械开关）。设备都可以正常使用。为确保安全，不要接入零火线等强电。



输入	交流 100-240V	50/60Hz
输出	交流 100-240V	50/60Hz
最大电流	10A /16A	
最大功率	150W	
WiFi	IEEE 802.11 b/g/n	
防火等级	V-0	
APP	智能生活	

