

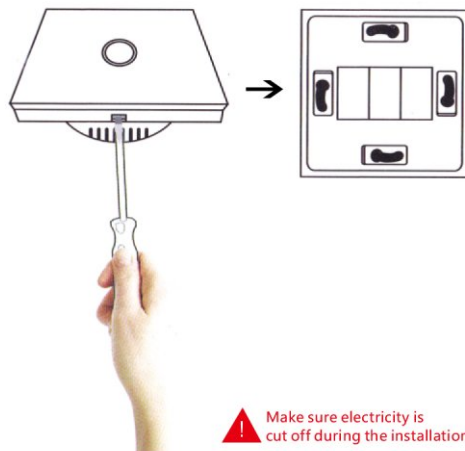
# Instruction Manual

Smart  
Touch Switch



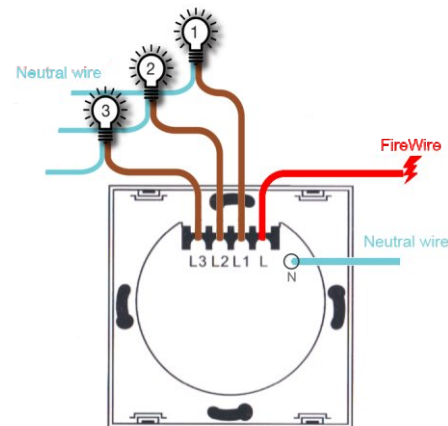
## PRODUCT DESCRIPTION

Remove the panel with screwdriver



⚠ Make sure electricity is cut off during the installation

## INSTALLATION



## PRODUCT FEATURES

- Works with Amazon Alexa , commanded by your voice .
- Control your home with your smartphones app or tablets from anywhere at anytime .
- Timing switch to turn ON/OFF your lights and appliances automatically .
- Refined appearance and made of fire resistant material , Safe and Durable .
- Overload protection , easy to replace your traditional mechanical switch (Requires a neutral wire) .
- The Smart Switch blends well with any room decor with its elegant , minimal design with sensitive capacitive touch control .
- Its LEDs can guide you at night when lights go off and you can simply turn it on/off by directly pressing .

## SPECIFICATIONS

Type : Wi-Fi Smart Touch Switch  
Rated Current : 10A (Max)  
Rated Voltage : 100V-250V  
Rated Power : 2000W  
Wireless Frequency : 2.4GHz  
Wireless standard : IEEE802.11 b/g/n

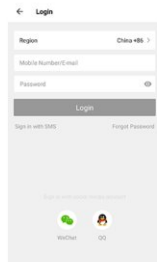
## How to download APP ?

1.1 Scan the QR code below or search Smart Life in IOS APP store or Google play .



### 1.2 Download & Registration

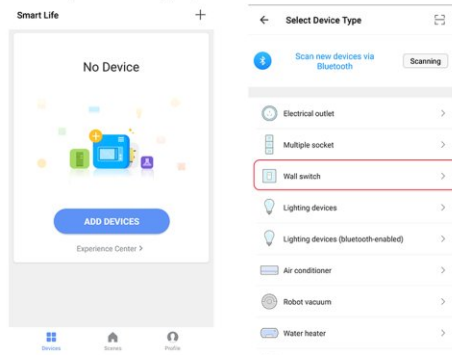
- Scan the QR code to download "Smart Life" Application
- Enter the register/login interface, input the phone number for getting verification code to register or through other methods at the bottom of page connecting to related authorization interface to log in.



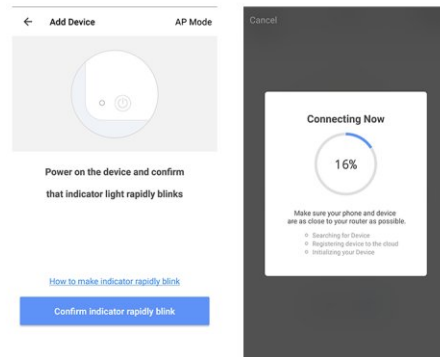
### 1.3 Easy Mode (Recommend)

Preparation: Device has connected with electricity, long press on/off button for 5 seconds until indicator light quickly flashes, the application already stepped into "My Device" interface

- Phone has connected to Wifi router and been able to connect to Internet
- Tap the icon "+" on the top right corner of "My Device", choose your device type, enter into "Add Device"



- Make sure the indicator light is flashing quickly, then tap the related button in application .
- Choose the local Wifi and enter the correct password , tap "Next" .
- Wait for configuring successfully , then tap "Complete" .



Attention: there is no Internet connected while the blue light flashing slowly .

## Warranty Card

### Dear Customers:

Thanks for using our products, we promise to provide you following service.

1. Year free repair service provided if products doesn't working well. However, changing case is not free service. customer have to pay case cost.
2. If warranty time expired, customer pay the repair cost.
3. If products got problem, please take the warranty card and purchasing receipt to the pointed address to repair.

Product name: \_\_\_\_\_

Production date: \_\_\_\_\_

Purchase date: \_\_\_\_\_

Contact information: \_\_\_\_\_

Customer's address: \_\_\_\_\_

After sales service tel: \_\_\_\_\_

After sales address: \_\_\_\_\_