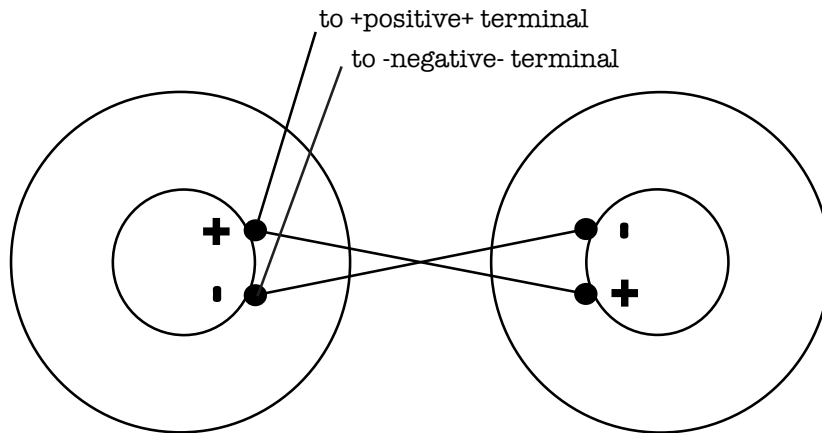


Speaker Wiring for Two Speakers

Parallel

This is the standard wiring for Fender amps with two speakers. In stock Fender amps, each speaker is 8 ohms. Wired in parallel, you get the correct 4 ohm load. This is the correct wiring for the Twin Reverb, Vibrolux Reverb & Pro Reverb combos, and two speaker cabinets for the Bassman, Bandmaster, Dual Showman & Tremolux heads. This wiring gives you HALF the impedance of each individual speaker. If each speaker is 8 ohms, you get a 4 ohm load. If each speaker is 16 ohms, you get an 8 ohm load, etc. Here's the formula: $\text{Total load} = (S1 \times S2) / (S1 + S2)$



Series

Another way to hook up two speakers is in series. This gives you TWICE the impedance of each individual speaker. If you have two 8 ohm speakers wired in series, you get a total load of 16 ohms. Here's the formula: $\text{Total load} = S1 + S2$

