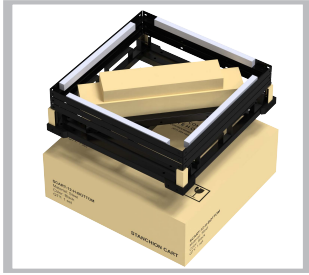


# Horizontal Post Storage Cart

## Compact storage. Easy transportation.

Store posts efficiently and transport them easily with the Horizontal Post Cart, available in 12 and 24 post capacities. The 24 post model is the largest capacity on the market and allows you to store 24 posts in just a 45" wide x 34.5" long space, compared to 54" wide x 84" long for posts stored on the floor — that's 1/3rd the storage footprint.

**Ships Unassembled** for a compact delivery via Freight



**Assembles quickly and easily:** in about a half hour by one or two people, compared to up to an hour and a half for other similar storage carts. All tools and hardware included.

**Upgrade from a 12 to 24 capacity cart:** easily add extension at any time.



Model # CCW-02-020-00002



Model # CCW-02-020-00001

**Small storage footprint:** store posts horizontally when not in use instead of using up floor space.



### Additional Features

Compatible with all manufacturer's retractable or conventional stanchions up to 2 3/4" diameter.

Carts will fit through standard 80" doorways with 21 posts loaded on the cart.

**Padded surfaces:** protect the post finish.

**Bungees:** secure posts on top rack of 24 Post Cart.

Dimensions	Empty	Full
12 Post Cart	33"L x 33" W x 42" H	45"L x 34.5"W x 45"H
24 Post Cart	33"L x 33" W x 77" H	45"L x 34.5"W x 81"H