



**MONTOUR
LINE**

WMXLine 140 / 160

Wall Mount Retractable Barrier

The WMXLine has an ABS casing for durability, mounted on the wall and used in hallways or areas with limited floor space.



Belt End Options

Universal Belt End



Magnetic Belt End



Mounting Options

Fixed Mount

Magnetic Mount



Specification Details - 140 / 160

Belt Lengths	Case Height	Case Width	Case Depth
8.5ft 10ft 13ft 15ft / 20ft 25ft 30 ft	5.5 in / 6.25 in	3.75 in / 4.5 in	3.5 in / 4.5 in
Belt Width	Case Material	Weight	Included Accessories
2in	ABS	1 lb/1.8 lbs	Wall Receiver and Hardware



Standard Belt Colors and Messages

					CAUTION-WET FLOOR	AUTHORIZED ACCESS ONLY
					CLEANING IN PROGRESS	OUT OF SERVICE
					THIS LINE IS CLOSED	CAUTION-DO NOT ENTER
					DANGER-KEEP OUT	PLEASE WAIT HERE

Case Color Options



Black



Black and Yellow



WMXLine 140/160

Wall Mount Retractable Barrier

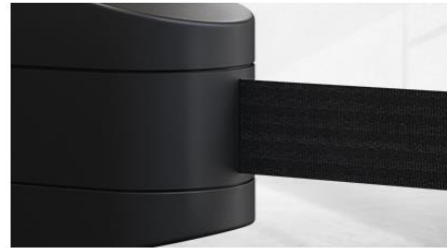
The WMXLine has an ABS casing for durability, mounted on the wall and used in hallways or areas with limited floor space.

Complete Features List



Great for use in tight spaces

Small profile and capable of mounting on a variety of flat surface. Designed to be used in areas where space is limited. Great for use in warehousing, manufacturing and construction areas.



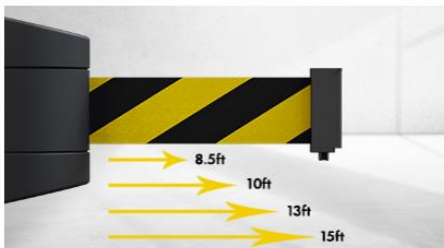
ABS Casing

Designed with a thick ABS composite casing that can stand up to the elements in any environment.



Herringbone Belt Webbing

Belt is crafted from strong webbed nylon material for ultimate durability.



Multiple Belt Lengths (WMXLine 140)

Available with belt lengths from 8.5ft to 15ft – you choose the best length to fit your needs.



Multiple Belt Lengths (WMXLine 160)

Available with belt lengths from 20ft to 30ft – you choose the best length to fit your needs.



Slow Retracting Belt

Equipped with built-in advanced slow braking retractable belt technology.



Belt Colors & Message Prints

Available in a variety of standard colors or find the message to suit your application.