



**MONTOUR  
LINE**

# WMLine 115

## Slim Wall Mount Retractable Barrier

Slim design wall mounted belt barrier with steel casing used in hallways or areas with limited floor space.



## Specification Details

<b>Belt Lengths</b> 8.5ft / 11ft	<b>Case Height</b> 4.5 in	<b>Case Width</b> 4.75 in	<b>Case Depth</b> 3.5 in
<b>Belt Width</b> 2in	<b>Case Material</b> Steel	<b>Weight</b> 2.5 lbs	<b>Included Accessories</b> Wall Receiver and Hardware



## Standard Belt Colors and Messages


## Case Finish Options



Black Powder Coated Steel



Polished Stainless Steel





**MONTOUR  
LINE**

# WMLine 115

## Slim Wall Mount Retractable Barrier

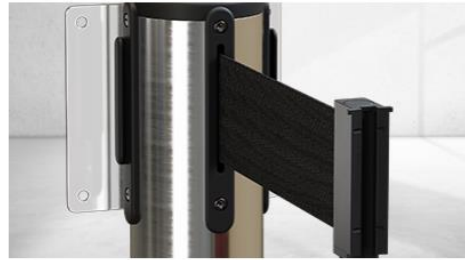
Slim design wall mounted belt barrier with steel casing used in hallways or areas with limited floor space.

### Complete Features List



#### Restrict access where space is limited

Easy to mount on many flat vertical surfaces to save precious floor space in tight areas of warehouses and factories.



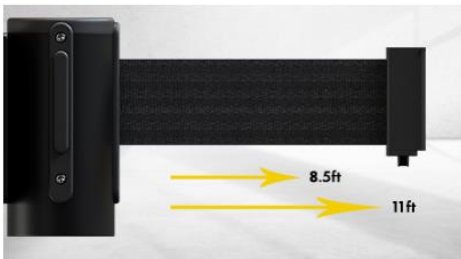
#### Steel Case Built to Last

Case is constructed using high quality steel for increased longevity when used any environment



#### Thick Belt Webbing

Herringbone weave belt is strong and incredibly durable.



#### Multiple Belt Lengths

Available in 8.5ft and 11ft belt lengths – you choose the best length to fit your needs.



#### Belt Colors & Message Prints

Available in a variety of standard colors or find the message to suit your application



#### Slow Braking Technology

Belt retracts quick and simple with slow brake technology built in to the barrier's cassette.

