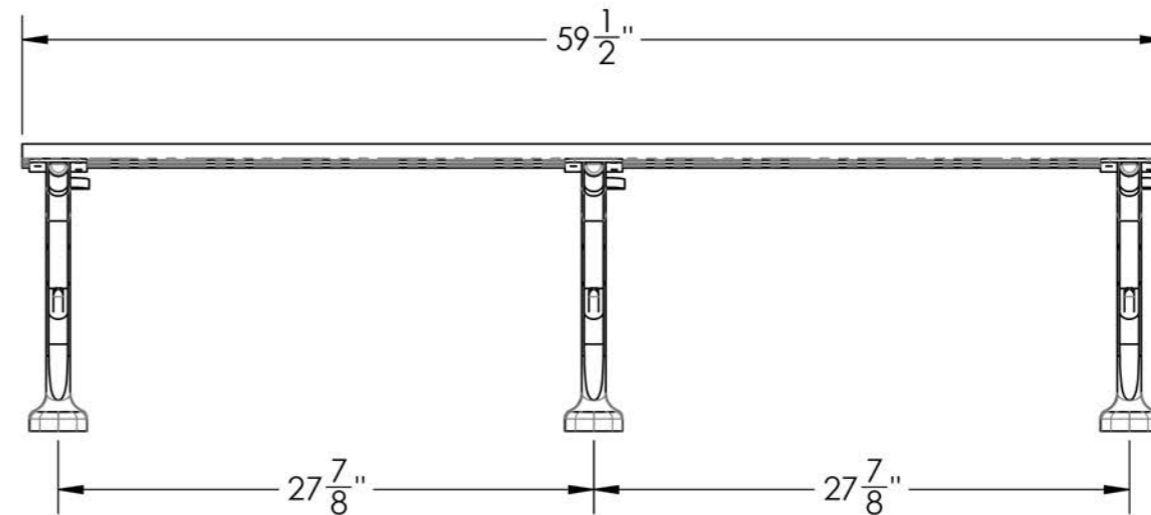
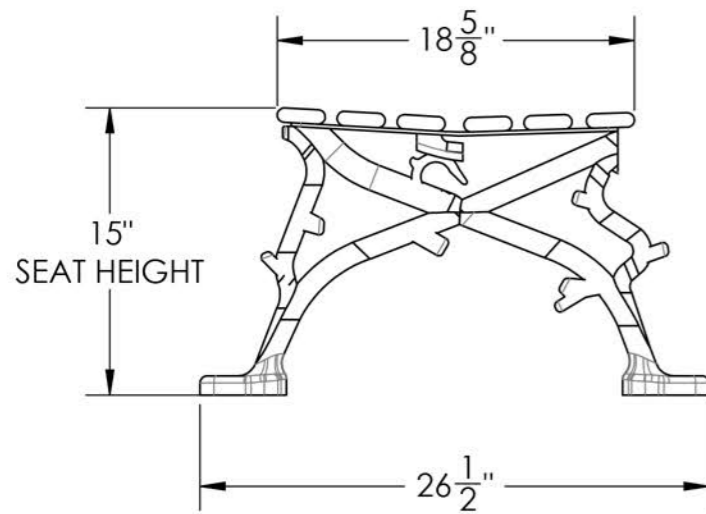
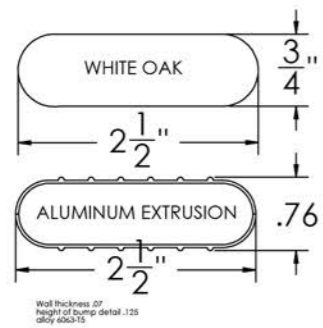
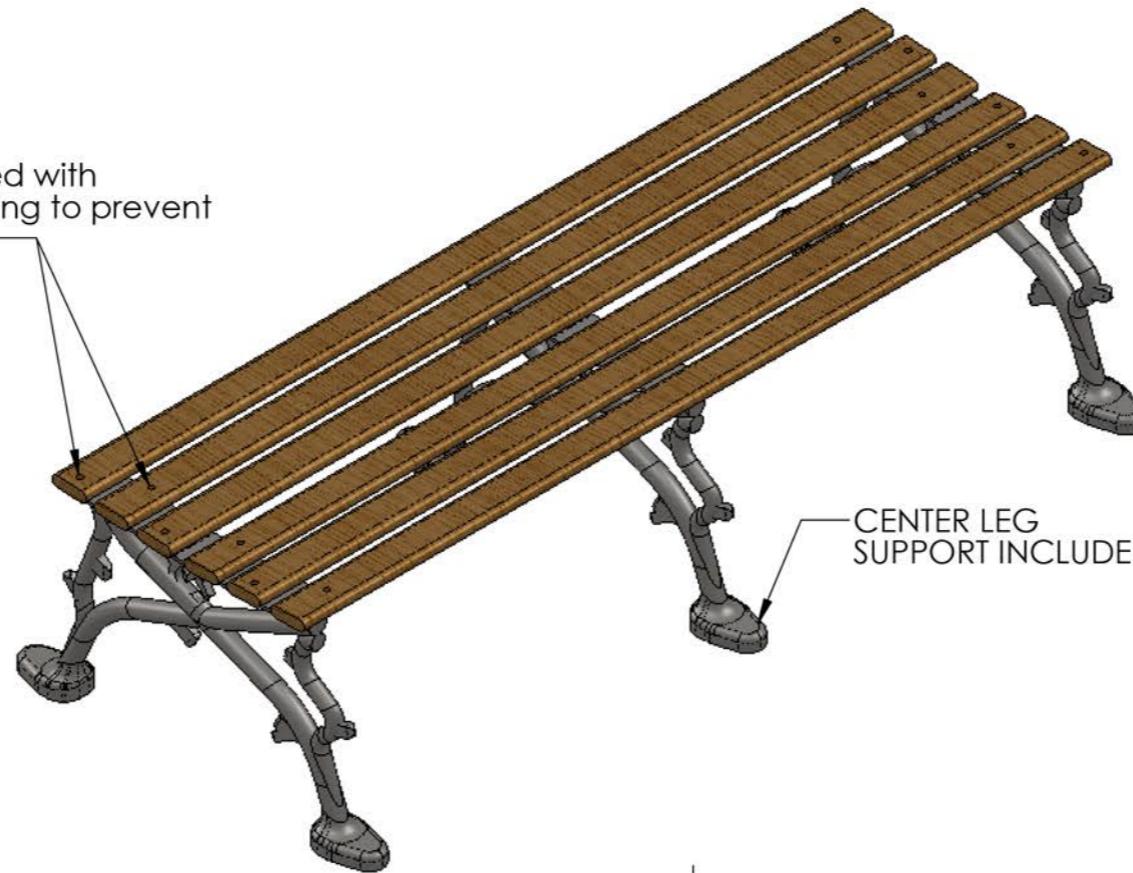


PRODUCT SPECIFICATIONS

BACKLESS BENCH - 60"

Engineered with
cross-bolting to prevent
end play



FRAME

- **Material:** Cast aluminum poured in permanent molds
- **Finish:** Electro static powder coating
- **Color:** Black, White, Green, Tan, Dk. Brown, Dk. Green, Bronze and Blue.

WOOD RAILS

- **Material:** FAS White Oak
- **Size:** $2\frac{1}{2}$ " wide by $\frac{3}{4}$ " milled two edges $\frac{3}{4}$ " half round
- **Number of Rails:** 6
- **Finish:** PENOFIN® impact impregnated
- **Maintenance:** Apply PENOFIN® as necessary. Follow manufacture's instructions.

HARDWARE

- **Carriage Bolts:** $\frac{1}{4}$ "-20 steel zinc plate, yellow dipped
- **Nuts:** $\frac{1}{4}$ " steel zinc plate