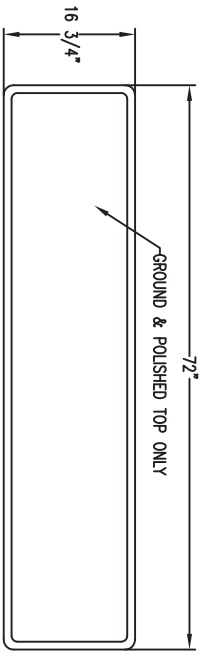
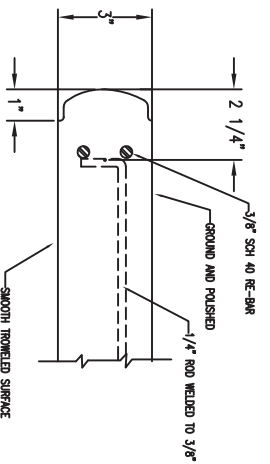


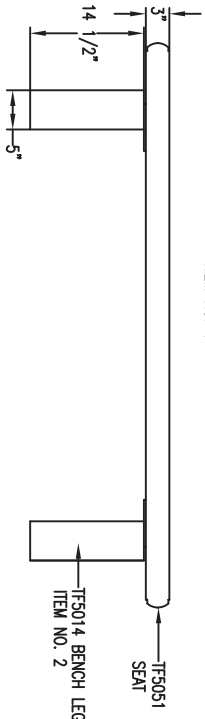
TF5043 AUBURNDALE BENCH



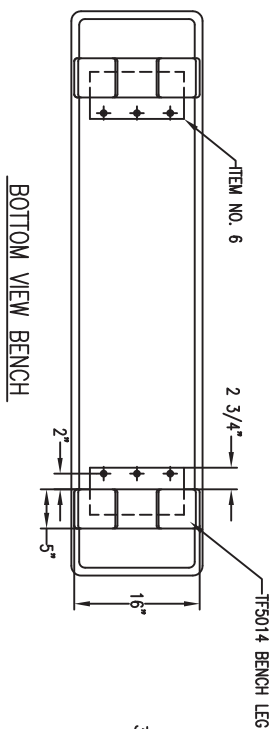
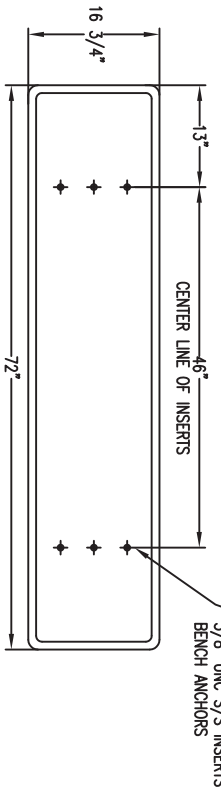
TOP VIEW BENCH SEAT
ITEM NO. 1



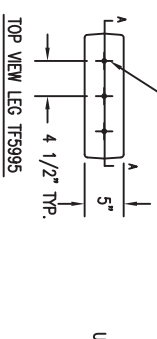
ITEM NO.	DISCRPTION	WT.	PART NO.	QTY.
1	CONCRETE BENCH SEAT	330#	TF5051	1
2	CONCRETE BENCH LEGS	80#	TF5014	1
3	3/8" - 16X1" HHCS BOLTS	.54#	RM 10261	6
4	3/8" X 7/8" DIA. FLAT WASHERS	.24#	RM 10195	6
5	3/8" - 16 X 1" FT SLOTTED MACHINE SCREW	.96#	RM 10511	6
6	ALUMINIUM PLATE 1/4" X 12" X 8"	27#	RM 11221	1
7	6X8 4ML. DRAWSTRING BAG	.08#	RM 10109	1
	HARDWARE BOLT KIT		TF9370	1



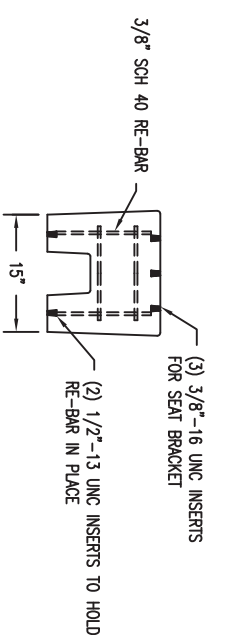
ELEVATION VIEW BENCH



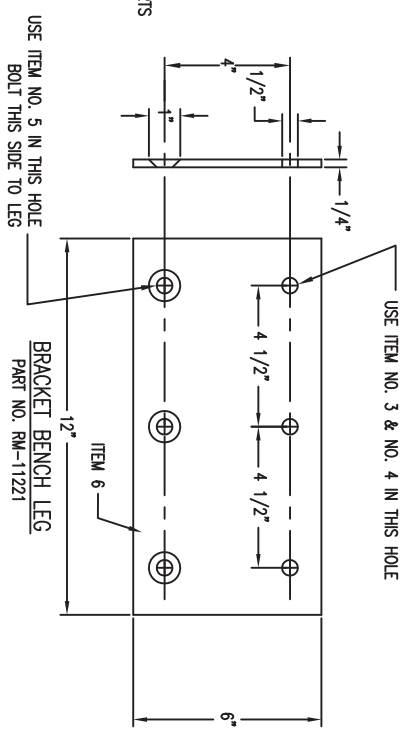
BOTTOM VIEW BENCH



TOP VIEW LEG TF5995



SECTION A-A
SECTION VIEW TF5995



SIDE ELEVATION VIEW TF5995

CONFIDENTIAL INFORMATION
These drawings, specifications and the other information and documents accompanying them are the confidential and proprietary property of Wausau Tile, Inc. The drawings themselves shall belong to the owner for use only on this project. Any additional use shall require the prior written approval of Wausau Tile, Inc. The proprietary information contained within the drawings and the documents is and shall

WT. OF COMPLETE UNIT: 500#

REVISIONS

NO.	DATE	BY
1		
2		
3		
4		



MANUFACTURED BY:
CROWD CONTROL WAREHOUSE

SITE-FURNISHINGS PRODUCTS

JOB	TF5043 AUBURNDALE BENCH SET
LOCATION	WAUSAU, WI.
DRAWN BY	RJH
DATE	2/12/03
SCALE	NTS
JOB NDL.	
DRWG.	1 OF 1
DRWG NDL.	003-2-43