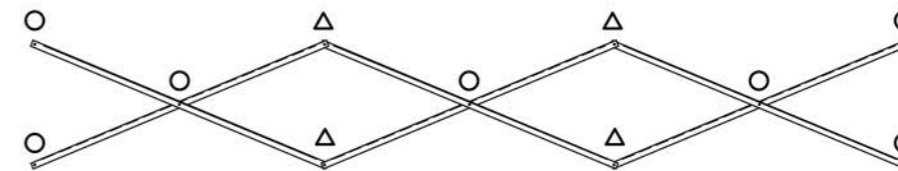


SEATING & FRAMING PLAN

1/4" = 1'-0"

42 NET SEATS @ 18" PER SEAT

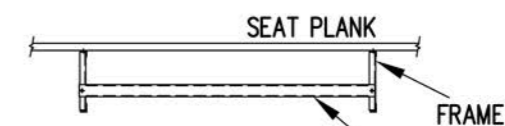
- DENOTES AXLE SLEEVE LOCATIONS
- ▷ DENOTES TONGUE GUIDE LOCATIONS



X-BRACE DETAIL

N.T.S.

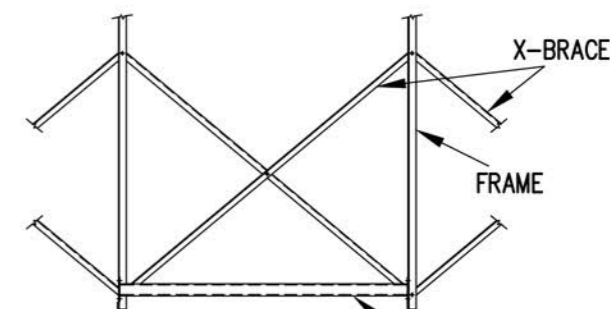
- 7/16" X 1" GALV. MACH. BOLT
- △ 7/16" X 1.1/2" GALV. MACH. BOLT



VIEW CC

N.T.S.

700-MC99 - ATTACH WITH (2) 7/16" X 1" GALV. MACH. BOLT.

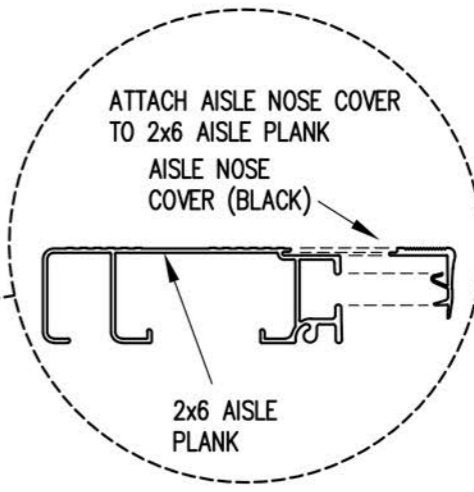
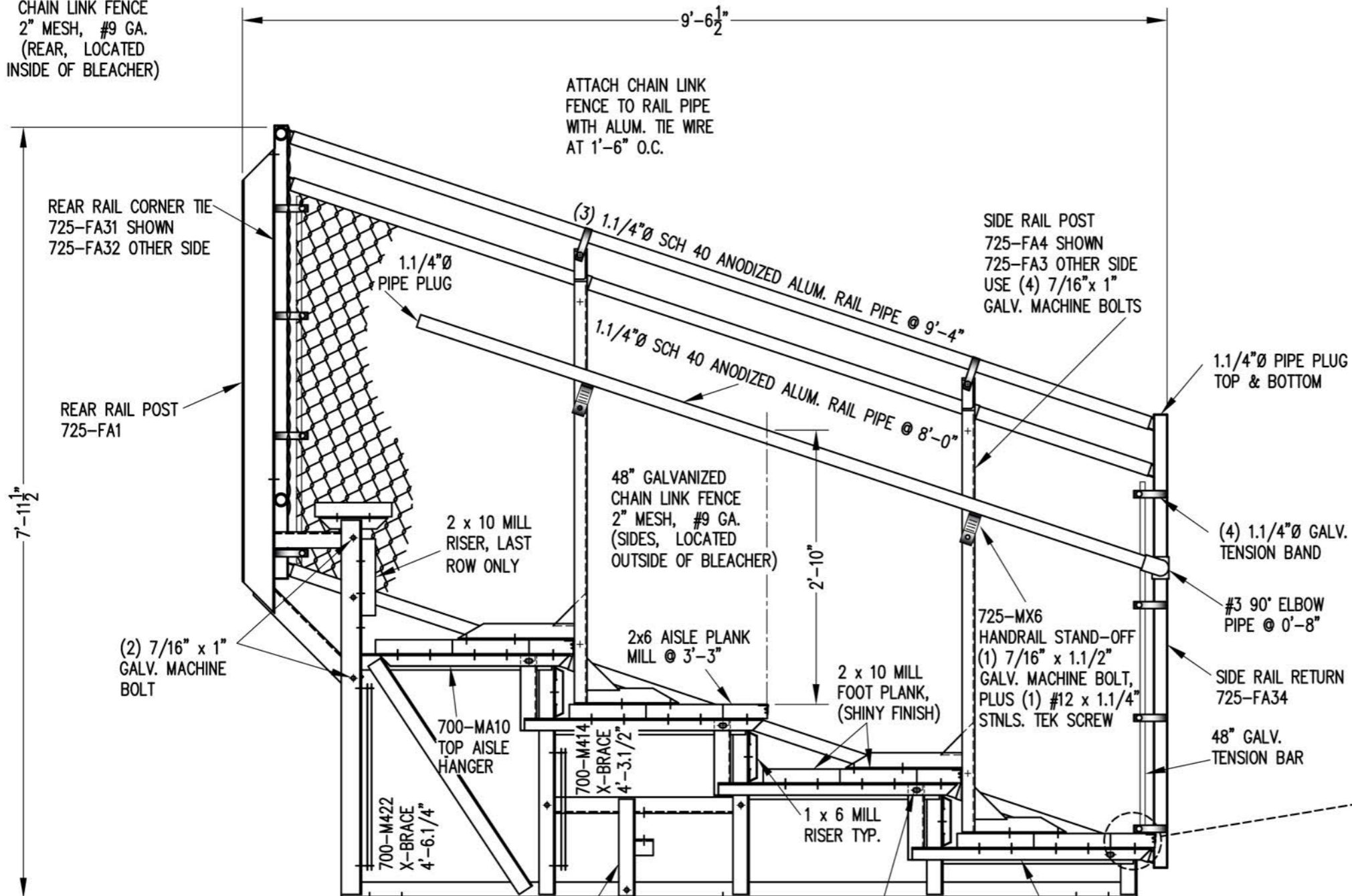


VIEW DD

N.T.S.

700-FA3 - ATTACH WITH (4) 7/16" X 1" GALV. MACH. BOLT

48" GALVANIZED
CHAIN LINK FENCE
2" MESH, #9 GA.
(REAR, LOCATED
INSIDE OF BLEACHER)



REAR RAIL CORNER TIE
725-FA31 SHOWN
725-FA32 OTHER SIDE

REAR RAIL POST
725-FA1

7'-11 1/2"

(2) 7/16" x 1"
GALV. MACHINE
BOLT

2 x 10 MILL
RISER, LAST
ROW ONLY

700-MA10
TOP AISLE
HANGER

700-M422
X-BRACE
4'-6.1/4"

700-M414
X-BRACE
4'-3.1/2"

2x6 AISLE PLANK
MILL @ 3'-3"

2 x 10 MILL
FOOT PLANK,
(SHINY FINISH)

1 x 6 MILL
RISER TYP.

725-MX6
HANDRAIL STAND-OFF
(1) 7/16" x 1.1/2"
GALV. MACHINE BOLT,
PLUS (1) #12 x 1.1/4"
STNLS. TEK SCREW

1.1/4"Ø PIPE PLUG
TOP & BOTTOM

(4) 1.1/4"Ø GALV.
TENSION BAND

#3 90° ELBOW
PIPE @ 0'-8"

SIDE RAIL RETURN
725-FA34

48" GALV.
TENSION BAR

ATTACH CHAIN LINK
FENCE TO RAIL PIPE
WITH ALUM. TIE WIRE
AT 1'-6" O.C.

SIDE RAIL POST
725-FA4 SHOWN
725-FA3 OTHER SIDE
USE (4) 7/16" x 1"
GALV. MACHINE BOLTS

(3) 1.1/4"Ø SCH 40 ANODIZED ALUM. RAIL PIPE @ 9'-4"
1.1/4"Ø SCH 40 ANODIZED ALUM. RAIL PIPE @ 8'-0"

48" GALVANIZED
CHAIN LINK FENCE
2" MESH, #9 GA.
(SIDES, LOCATED
OUTSIDE OF BLEACHER)

2'-10"

(5) 7/16" x 1" GALV.
MACHINE BOLT

(4)

(3)

(2)

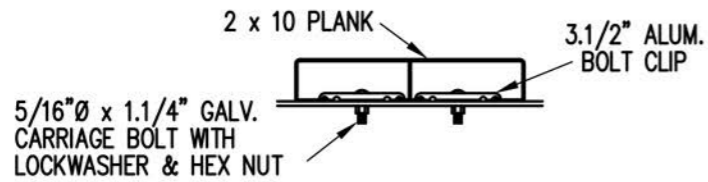
700-FA10
AISLE HANGER
TYPICAL

(1)

'T' TONGUE GUIDE
700-FA1
ATTACH W/ (3) 7/16" x 1"
GALV. MACHINE BOLTS
SEE FRAMING PLAN FOR
LOCATIONS.

SECTION BB
3/4" = 1'-0"

NOTE: ALL AISLE HANGERS - TWO PER
LOCATION REQUIRED, TYPICAL



BOLT CLIP DETAIL

1.1/2" = 1'-0"

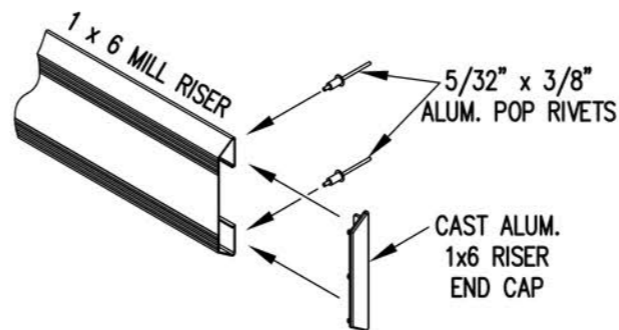


FIG.1 FIG.2

- 1) LOCATE THE CHANNEL END CAP AS SHOWN IN FIG. 1.
- 2) TAP END CAP INTO PLACE WITH RUBBER Mallet OR SOFT WOOD. FIG.2
- 3) DRILL 5/32" HOLES THROUGH THE BOTTOM FLANGE AND THE BOTTOM OUTSIDE PLANK FLANGES OF EACH PLANK. INSTALL 5/32" POP RIVETS.

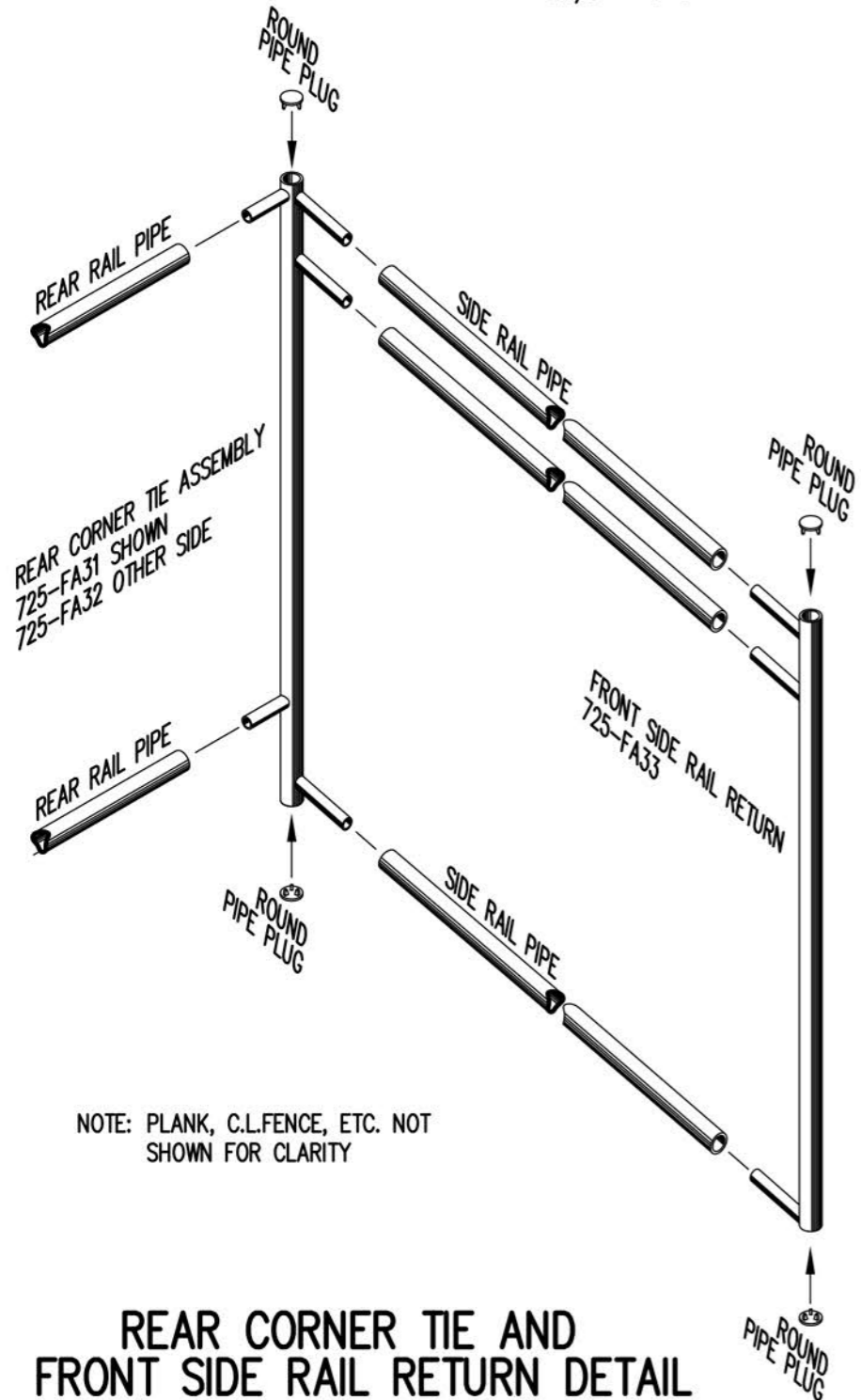
END CAP DETAIL

N.T.S.



1 x 6 RISER END CAP

N.T.S.



REAR CORNER TIE AND FRONT SIDE RAIL RETURN DETAIL

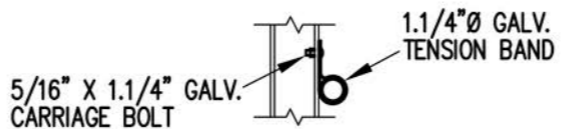
3/4" = 1'-0"



TOP RAIL

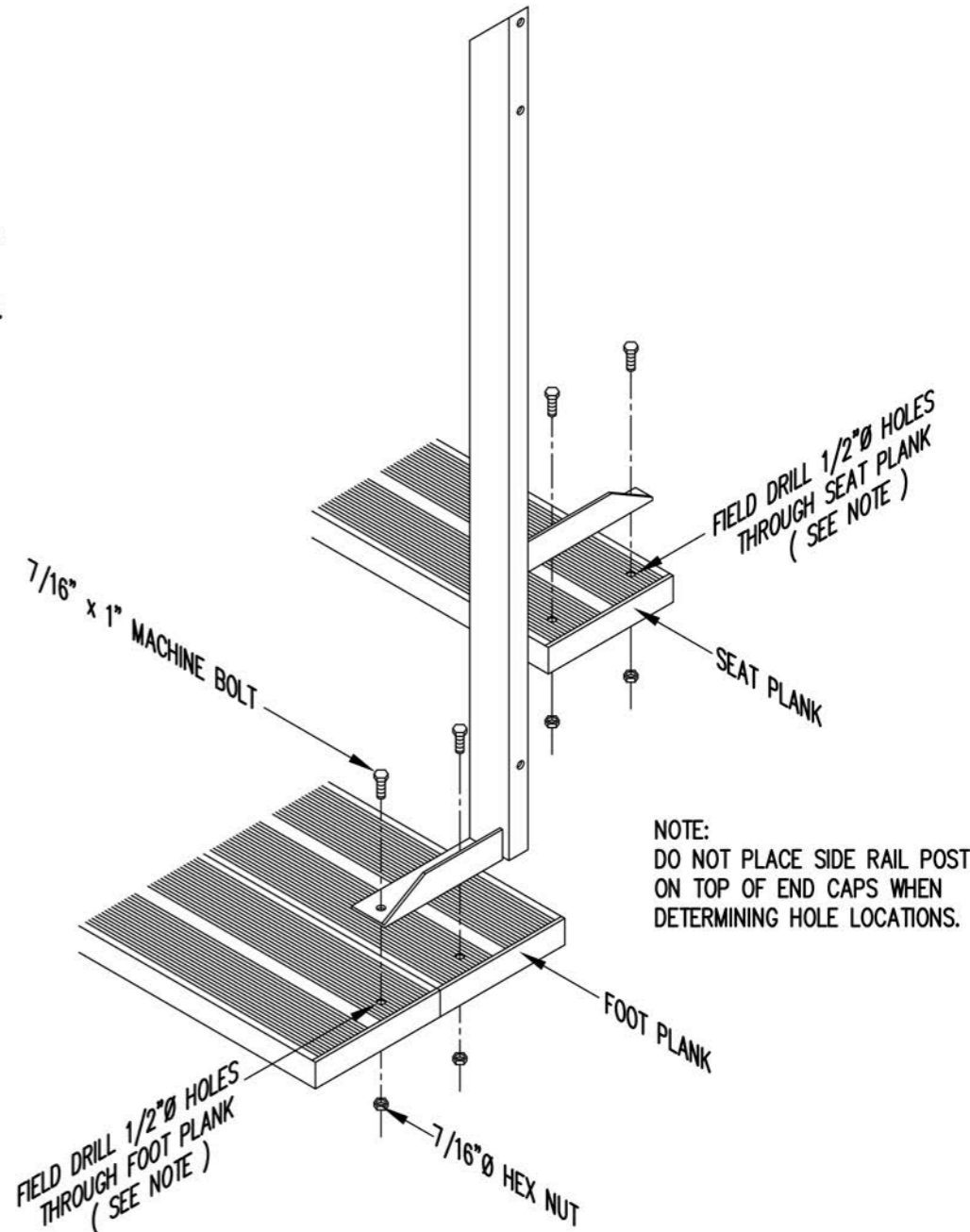


2ND RAIL



BOTTOM RAIL

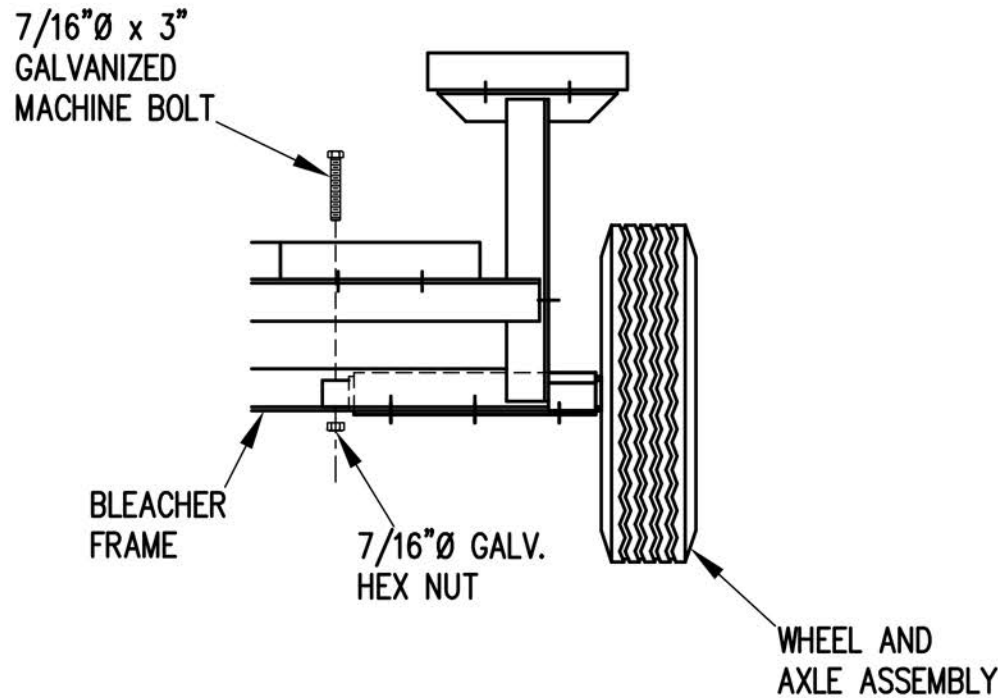
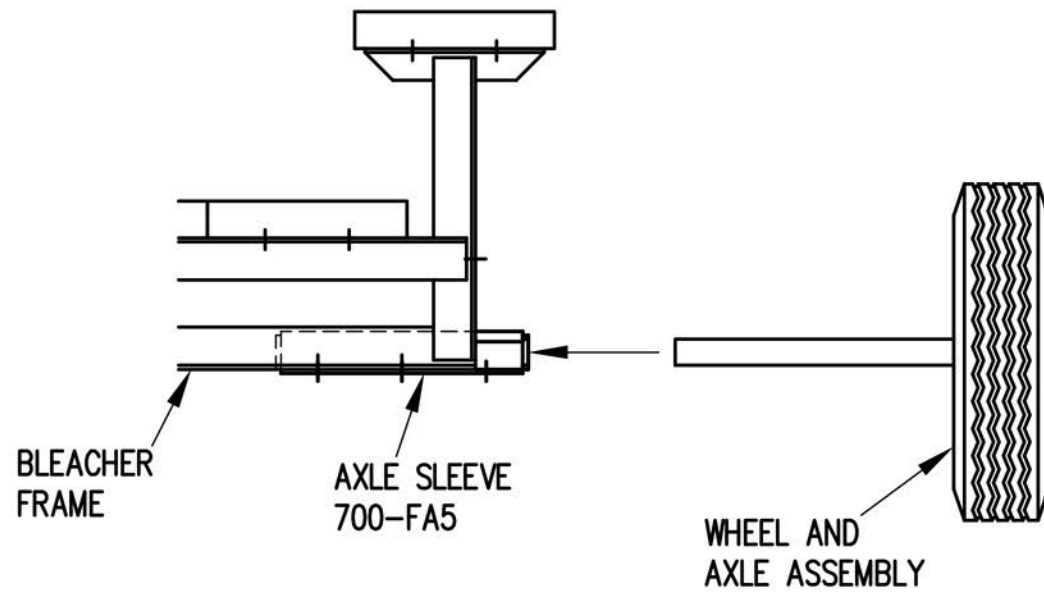
RAIL PIPE ATTACHMENT



TYP. SIDE RAIL POST ATTACHMENT

1" = 1'-0"

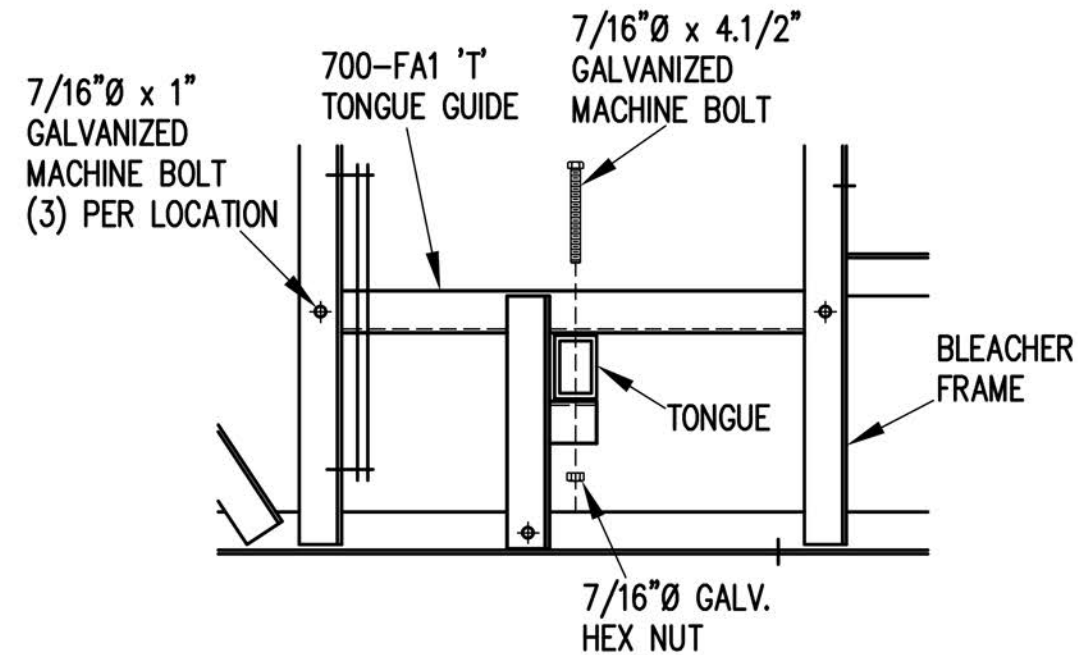
NOTE: SEE FRAMING PLAN FOR LOCATION OF AXLE SLEEVES AND TONGUE GUIDES.



1. ELEVATE BLEACHER TO RECEIVE WHEEL UNITS.
2. INSERT WHEEL AND AXLE ASSEMBLY INTO AXLE SLEEVE AS SHOWN.
3. INSERT 7/16" X 3" GALVANIZED MACHINE BOLT THROUGH AXLE TO SECURE IN AXLE SLEEVE.

WHEEL AND AXLE ATTACHMENT

1" = 1'-0"

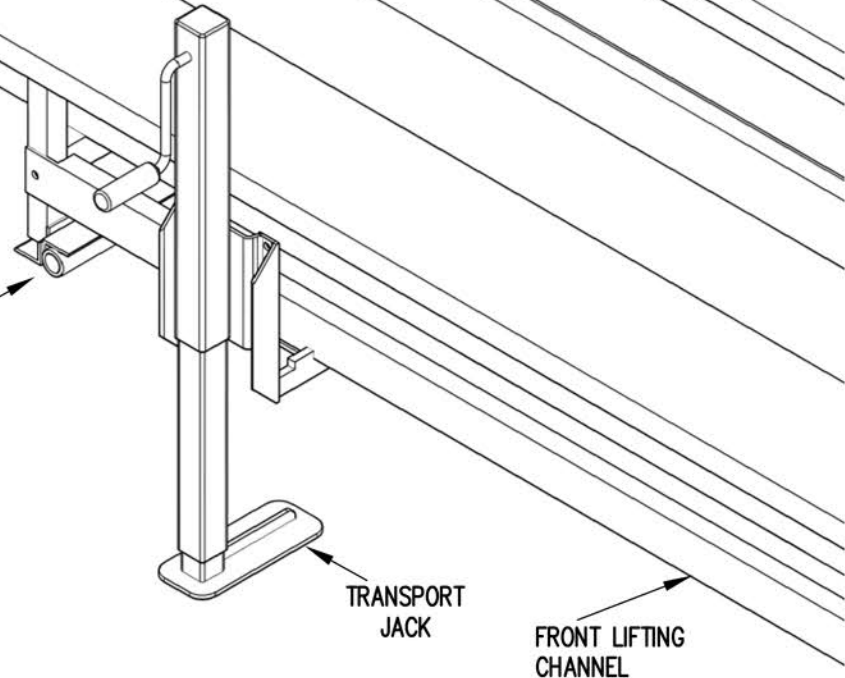
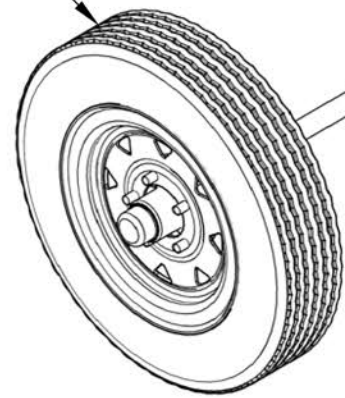


1. INSERT TONGUE THROUGH TONGUE GUIDES.
2. ATTACH TONGUE TO TONGUE BRACKETS WITH 7/16" X 4.1/2" GALVANIZED MACHINE BOLTS AS SHOWN.
3. TIGHTEN SECURELY.

TONGUE ATTACHMENT

1" = 1'-0"

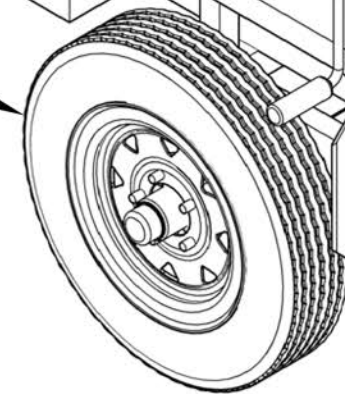
WHEEL AND AXLE ASSEMBLY



TRANSPORT JACK

FRONT LIFTING CHANNEL

WHEEL AND AXLE ASSEMBLY



TRANSPORT JACK

FRONT LIFTING CHANNEL

