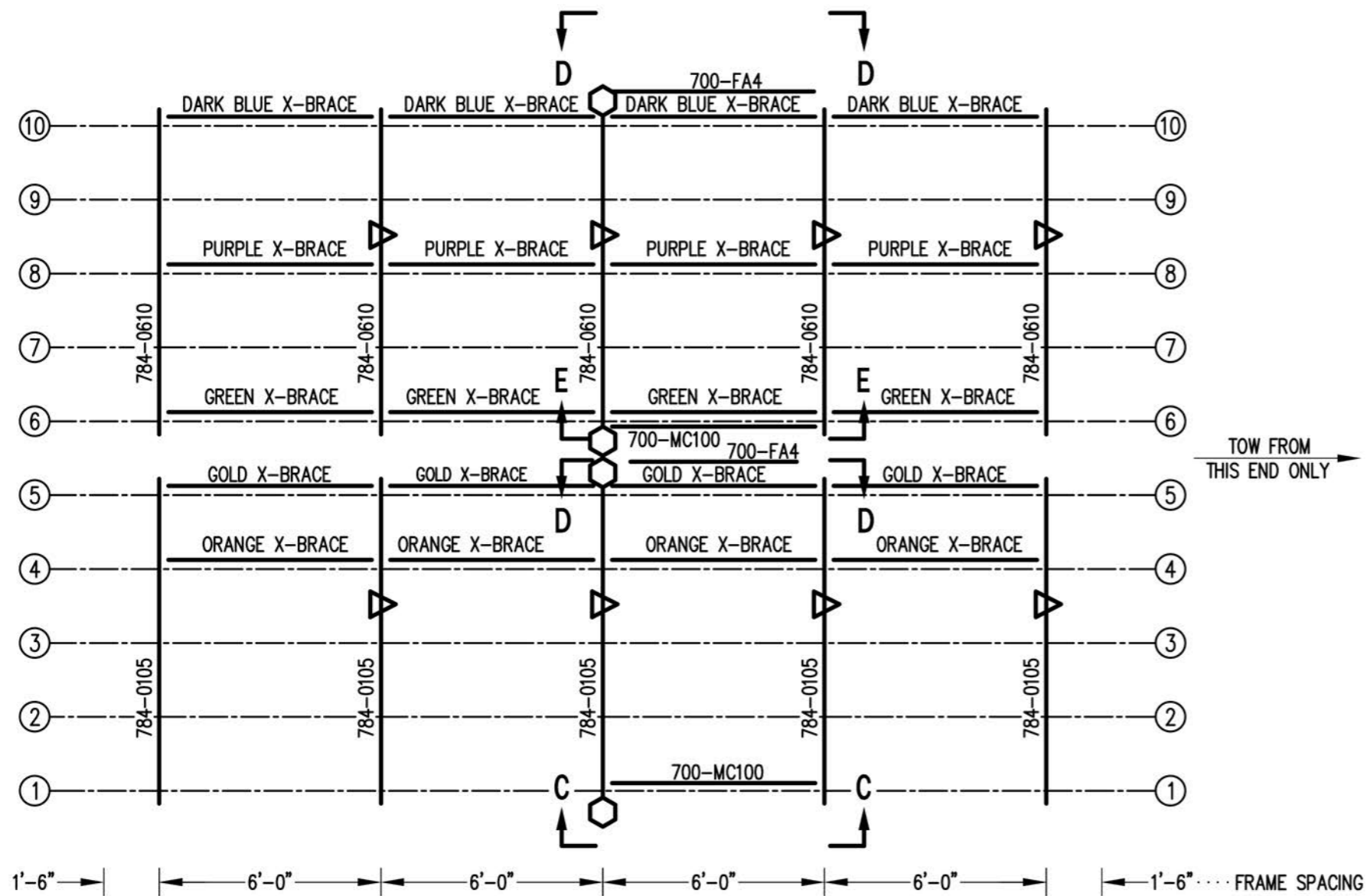


SEATING PLAN

1/4" = 1'-0"

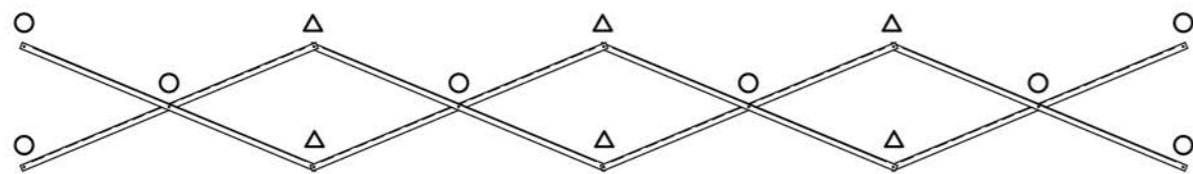
144 NET SEATS @ 18" PER SEAT



FRAMING PLAN

1/4" = 1'-0"

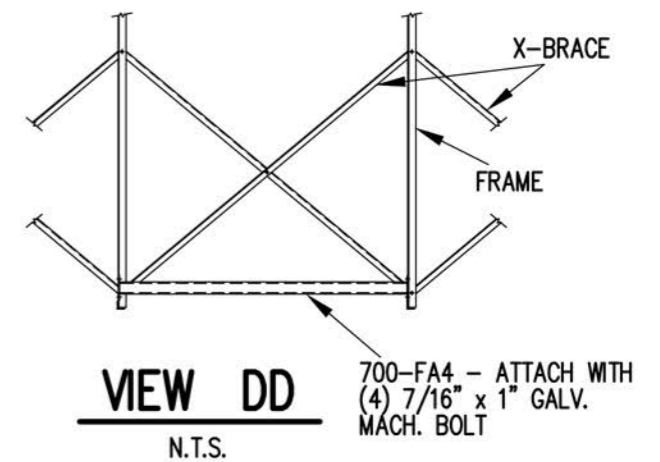
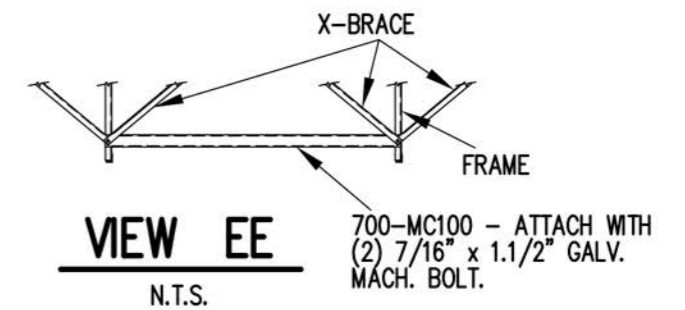
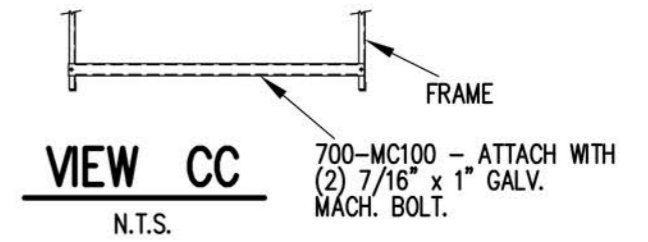
- DENOTES AXLE SLEEVE LOCATIONS
- △ DENOTES TONGUE GUIDE LOCATIONS

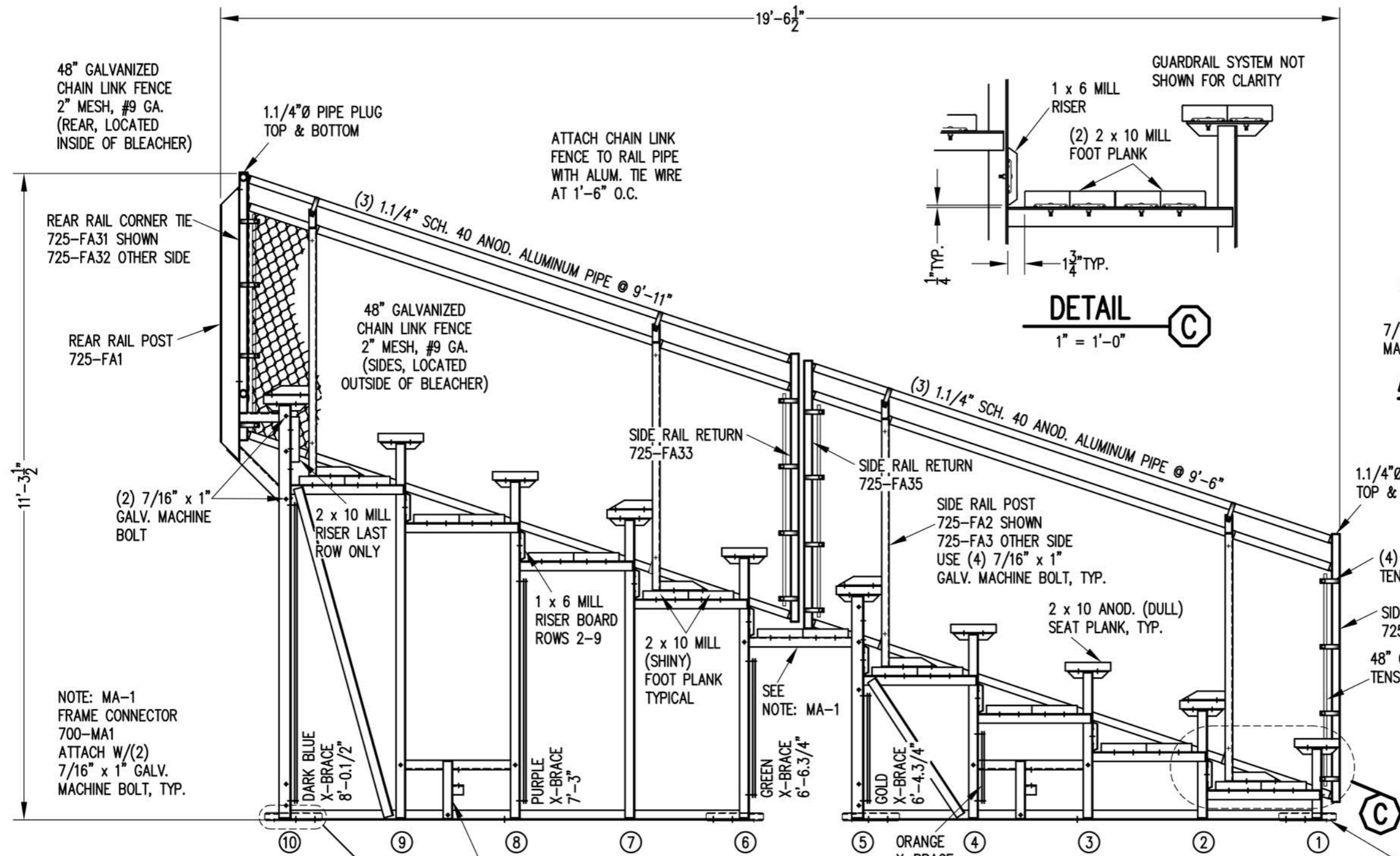


X-BRACE DETAIL

N.T.S.

- 7/16" X 1" GALV. MACH. BOLT
- △ 7/16" X 1.1/2" GALV. MACH. BOLT





48" GALVANIZED CHAIN LINK FENCE 2" MESH, #9 GA. (REAR, LOCATED INSIDE OF BLEACHER)

1.1/4"Ø PIPE PLUG TOP & BOTTOM

ATTACH CHAIN LINK FENCE TO RAIL PIPE WITH ALUM. TIE WIRE AT 1'-6" O.C.

REAR RAIL CORNER TIE 725-FA31 SHOWN 725-FA32 OTHER SIDE

48" GALVANIZED CHAIN LINK FENCE 2" MESH, #9 GA. (SIDES, LOCATED OUTSIDE OF BLEACHER)

REAR RAIL POST 725-FA1

(2) 7/16" x 1" GALV. MACHINE BOLT

2 x 10 MILL RISER LAST ROW ONLY

1 x 6 MILL RISER BOARD ROWS 2-9

2 x 10 MILL (SHINY) FOOT PLANK TYPICAL

SEE NOTE: MA-1

SIDE RAIL POST 725-FA2 SHOWN 725-FA3 OTHER SIDE USE (4) 7/16" x 1" GALV. MACHINE BOLT, TYP.

2 x 10 ANOD. (DULL) SEAT PLANK, TYP.

1.1/4"Ø PIPE PLUG TOP & BOTTOM

(4) 1.1/4"Ø GALV. TENSION BAND

SIDE RAIL RETURN 725-FA33

48" GALV. TENSION BAR

NOTE: MA-1 FRAME CONNECTOR 700-MA1 ATTACH W/(2) 7/16" x 1" GALV. MACHINE BOLT, TYP.

DARK BLUE X-BRACE 8'-0.1/2"

PURPLE X-BRACE 7'-3"

GREEN X-BRACE 6'-6.3/4"

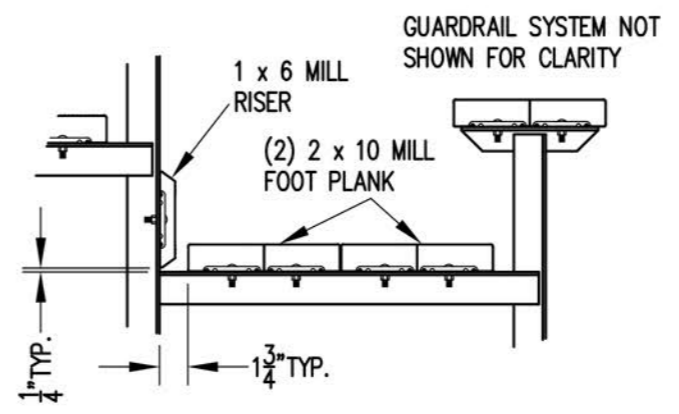
GOLD X-BRACE 6'-4.3/4"

ORANGE X-BRACE 6'-2.7/8"

T TONGUE GUIDE 700-FA1 ATTACH WITH (3) 7/16" x 1" GALV. MACHINE BOLT, TYP. SEE FRAMING PLAN FOR LOCATIONS

SECTION AA

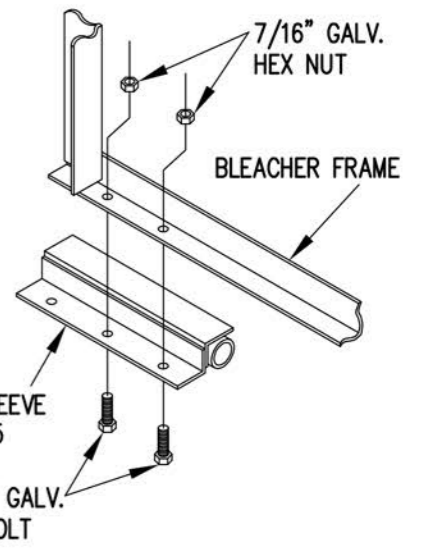
1/2" = 1'-0"



DETAIL C

1" = 1'-0"

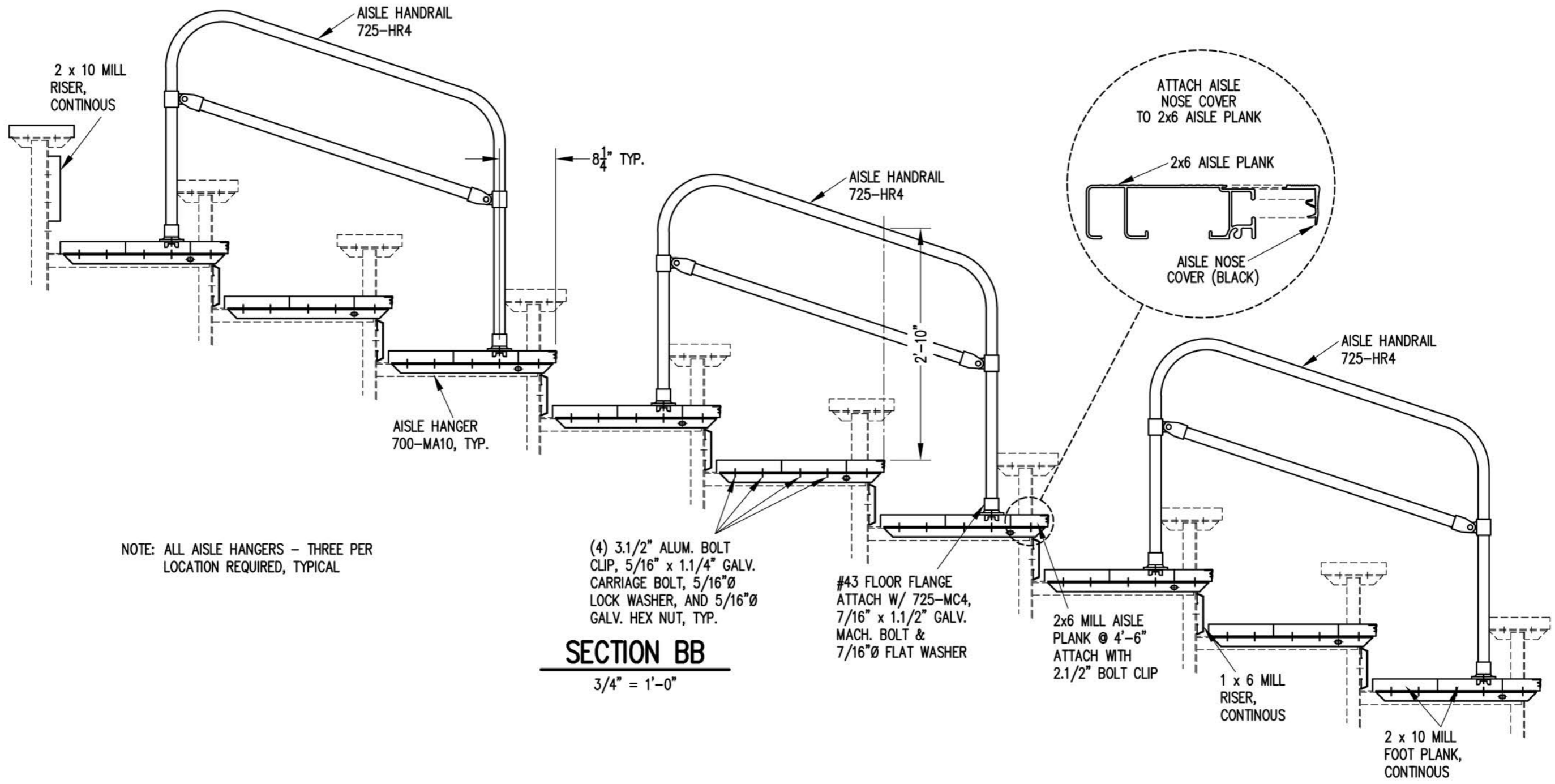
GUARDRAIL SYSTEM NOT SHOWN FOR CLARITY



AXLE SLEEVE DETAIL S

1" = 1'-0"

AXLE SLEEVE 700-FA5 ATTACH WITH (2) 7/16" x 1" GALV. MACHINE BOLT, TYP. SEE FRAMING PLAN FOR LOCATIONS



NOTE: ALL AISLE HANGERS - THREE PER LOCATION REQUIRED, TYPICAL

(4) 3.1/2" ALUM. BOLT CLIP, 5/16" x 1.1/4" GALV. CARRIAGE BOLT, 5/16"Ø LOCK WASHER, AND 5/16"Ø GALV. HEX NUT, TYP.

SECTION BB

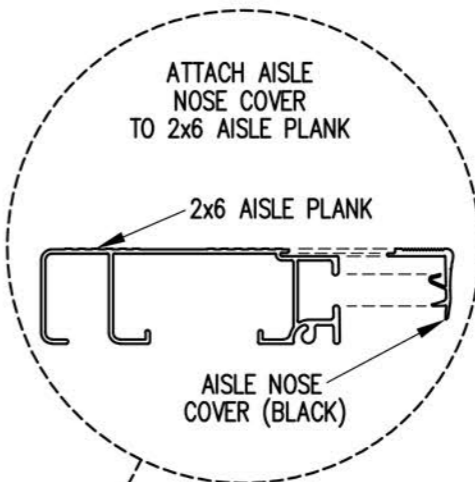
3/4" = 1'-0"

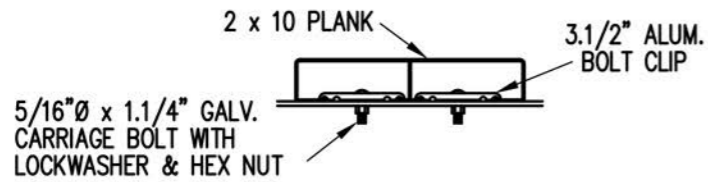
#43 FLOOR FLANGE ATTACH W/ 725-MC4, 7/16" x 1.1/2" GALV. MACH. BOLT & 7/16"Ø FLAT WASHER

2x6 MILL AISLE PLANK @ 4'-6" ATTACH WITH 2.1/2" BOLT CLIP

1 x 6 MILL RISER, CONTINUOUS

2 x 10 MILL FOOT PLANK, CONTINUOUS





BOLT CLIP DETAIL

1.1/2" = 1'-0"

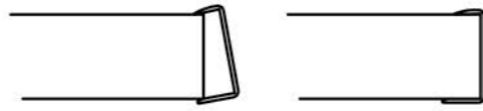
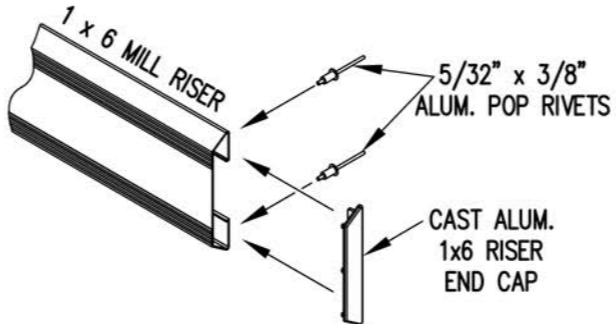


FIG.1 FIG.2

- 1) LOCATE THE CHANNEL END CAP AS SHOWN IN FIG. 1.
- 2) TAP END CAP INTO PLACE WITH RUBBER Mallet OR SOFT WOOD. FIG.2
- 3) DRILL 5/32" HOLES THROUGH THE BOTTOM FLANGE AND THE BOTTOM OUTSIDE PLANK FLANGES OF EACH PLANK. INSTALL 5/32" POP RIVETS.

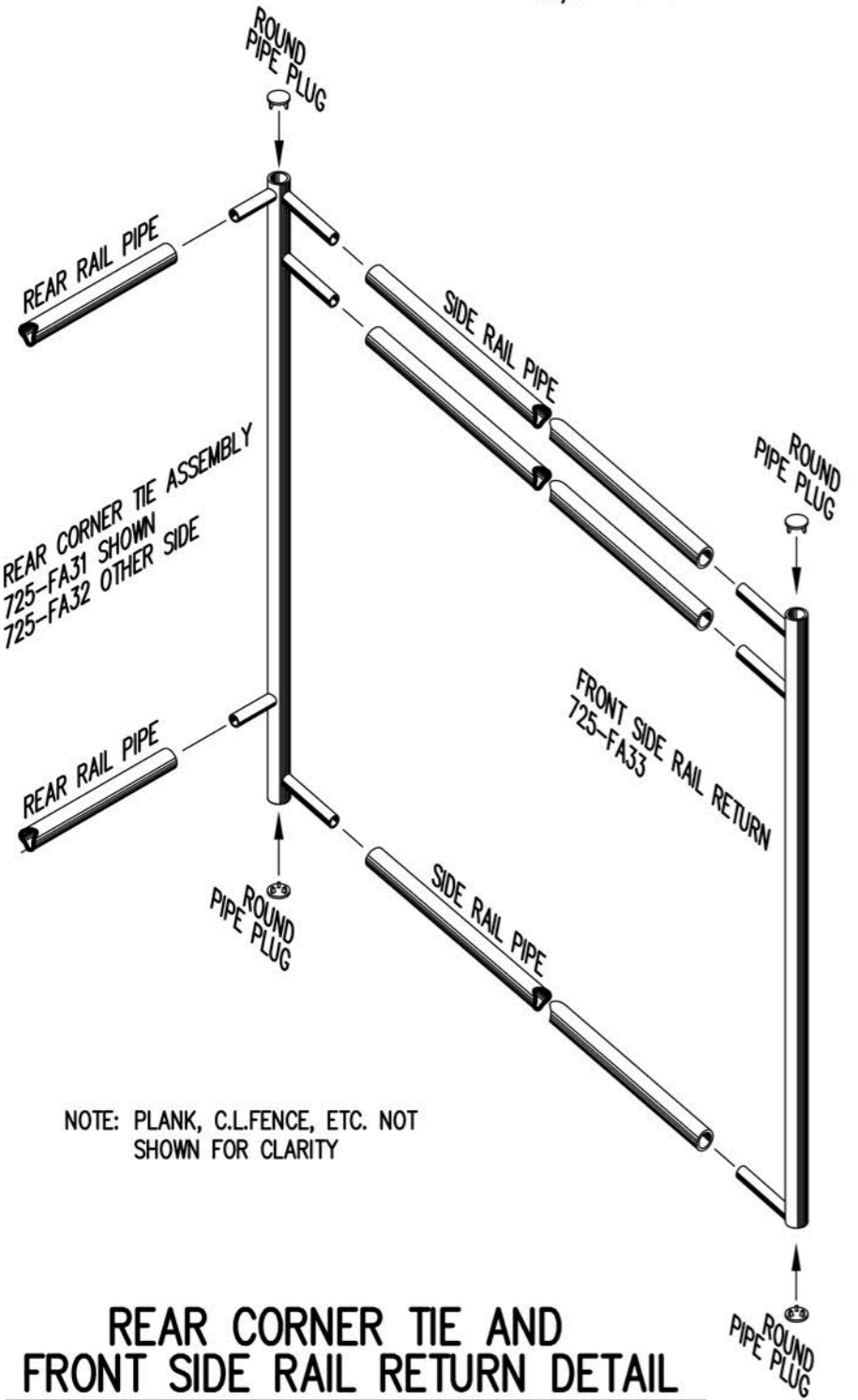
END CAP DETAIL

N.T.S.



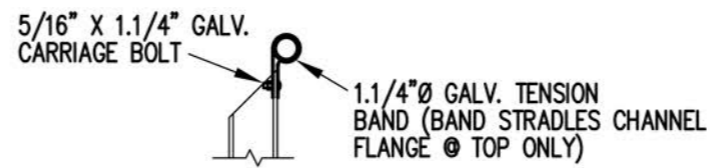
1 x 6 RISER END CAP

N.T.S.



REAR CORNER TIE AND FRONT SIDE RAIL RETURN DETAIL

3/4" = 1'-0"



TOP RAIL

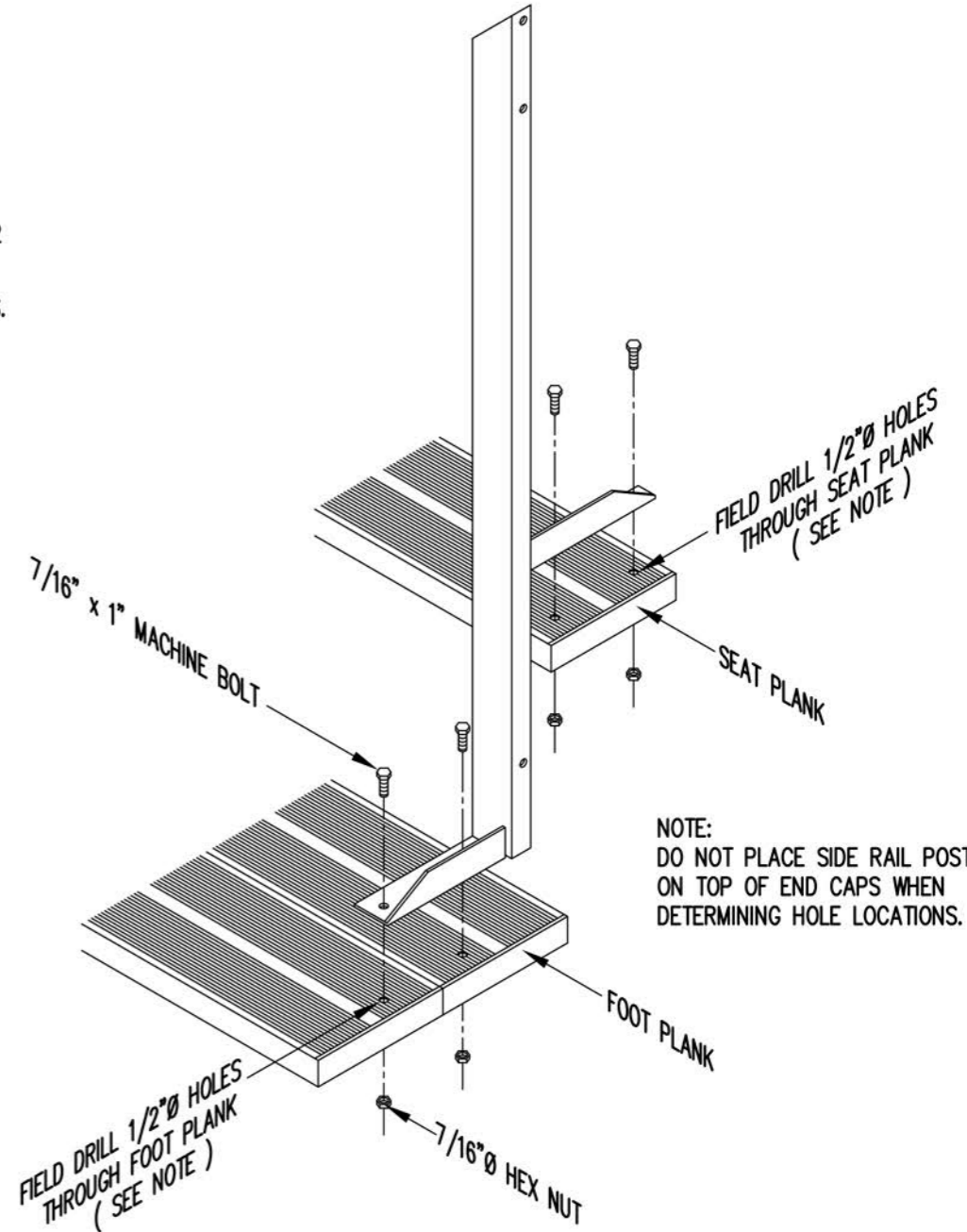


2ND RAIL



BOTTOM RAIL

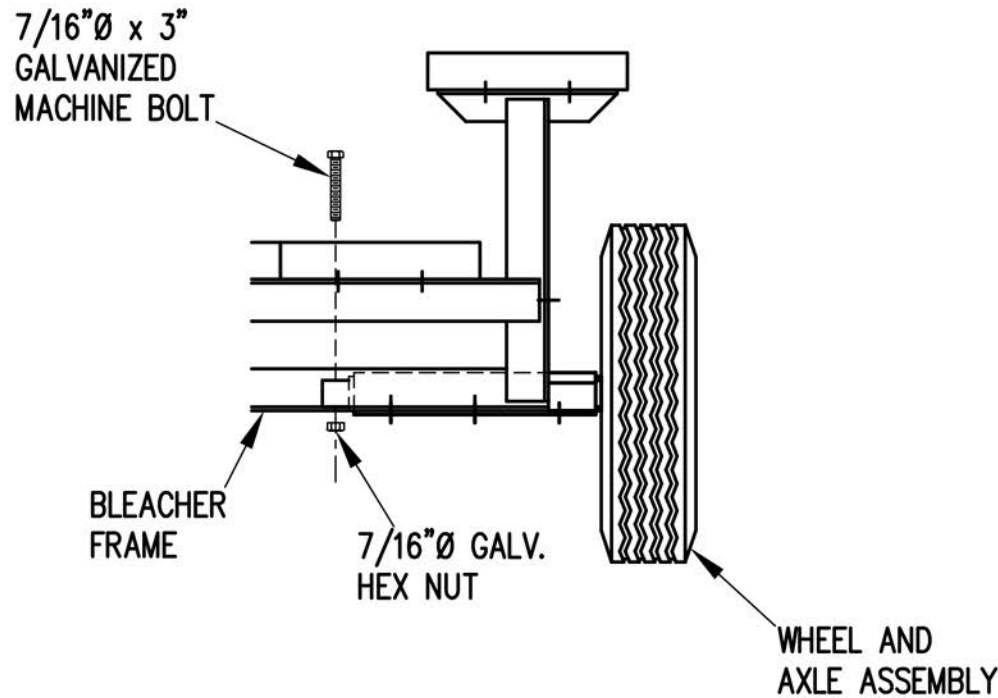
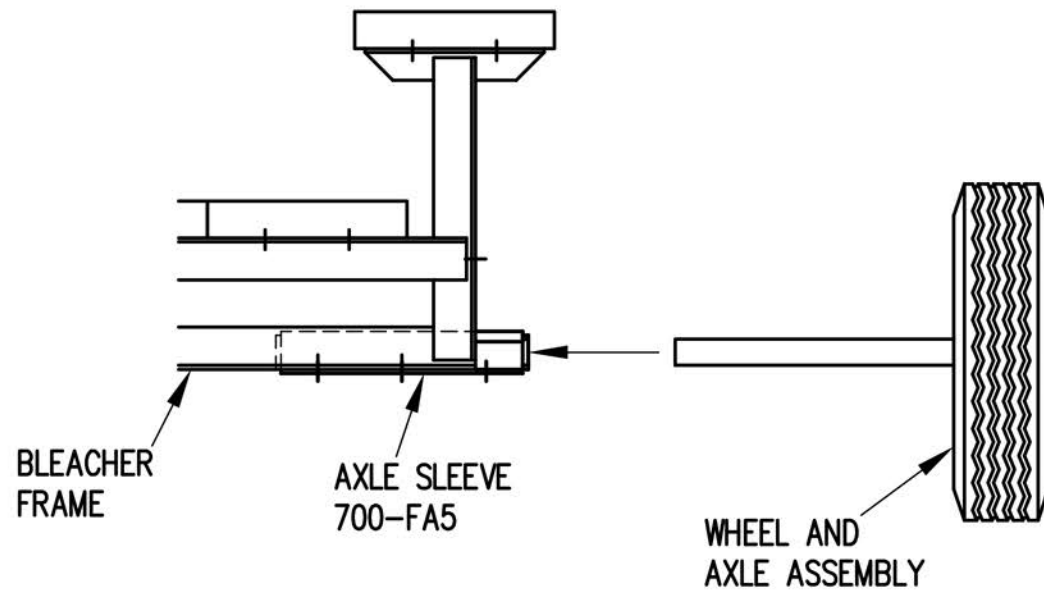
RAIL PIPE ATTACHMENT



TYP. SIDE RAIL POST ATTACHMENT

1" = 1'-0"

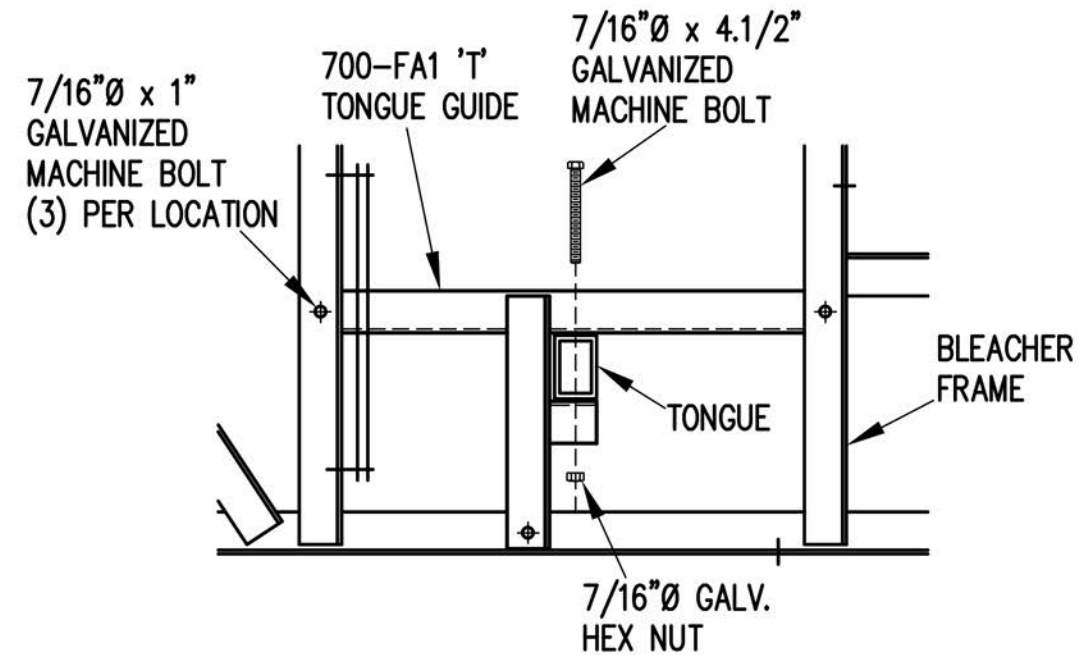
NOTE: SEE FRAMING PLAN FOR LOCATION OF AXLE SLEEVES AND TONGUE GUIDES.



1. ELEVATE BLEACHER TO RECEIVE WHEEL UNITS.
2. INSERT WHEEL AND AXLE ASSEMBLY INTO AXLE SLEEVE AS SHOWN.
3. INSERT 7/16" X 3" GALVANIZED MACHINE BOLT THROUGH AXLE TO SECURE IN AXLE SLEEVE.

WHEEL AND AXLE ATTACHMENT

1" = 1'-0"

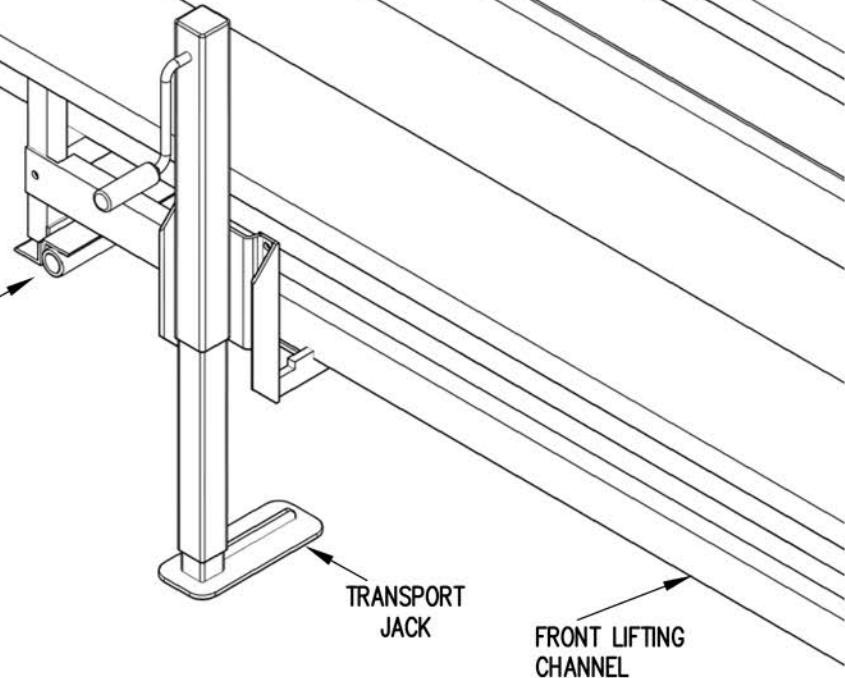
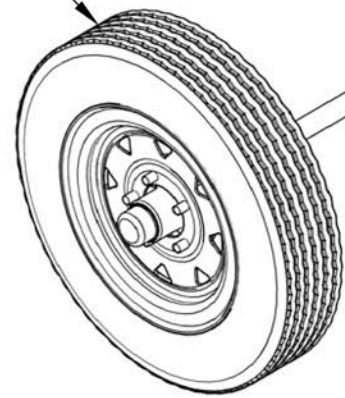


1. INSERT TONGUE THROUGH TONGUE GUIDES.
2. ATTACH TONGUE TO TONGUE BRACKETS WITH 7/16" X 4.1/2" GALVANIZED MACHINE BOLTS AS SHOWN.
3. TIGHTEN SECURELY.

TONGUE ATTACHMENT

1" = 1'-0"

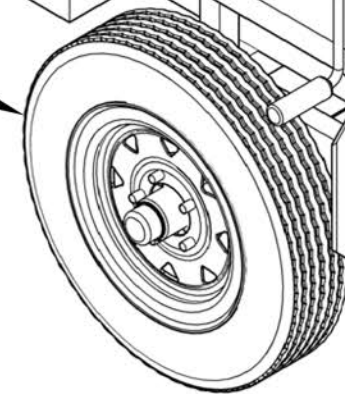
WHEEL AND AXLE ASSEMBLY



TRANSPORT JACK

FRONT LIFTING CHANNEL

WHEEL AND AXLE ASSEMBLY



TRANSPORT JACK

FRONT LIFTING CHANNEL

