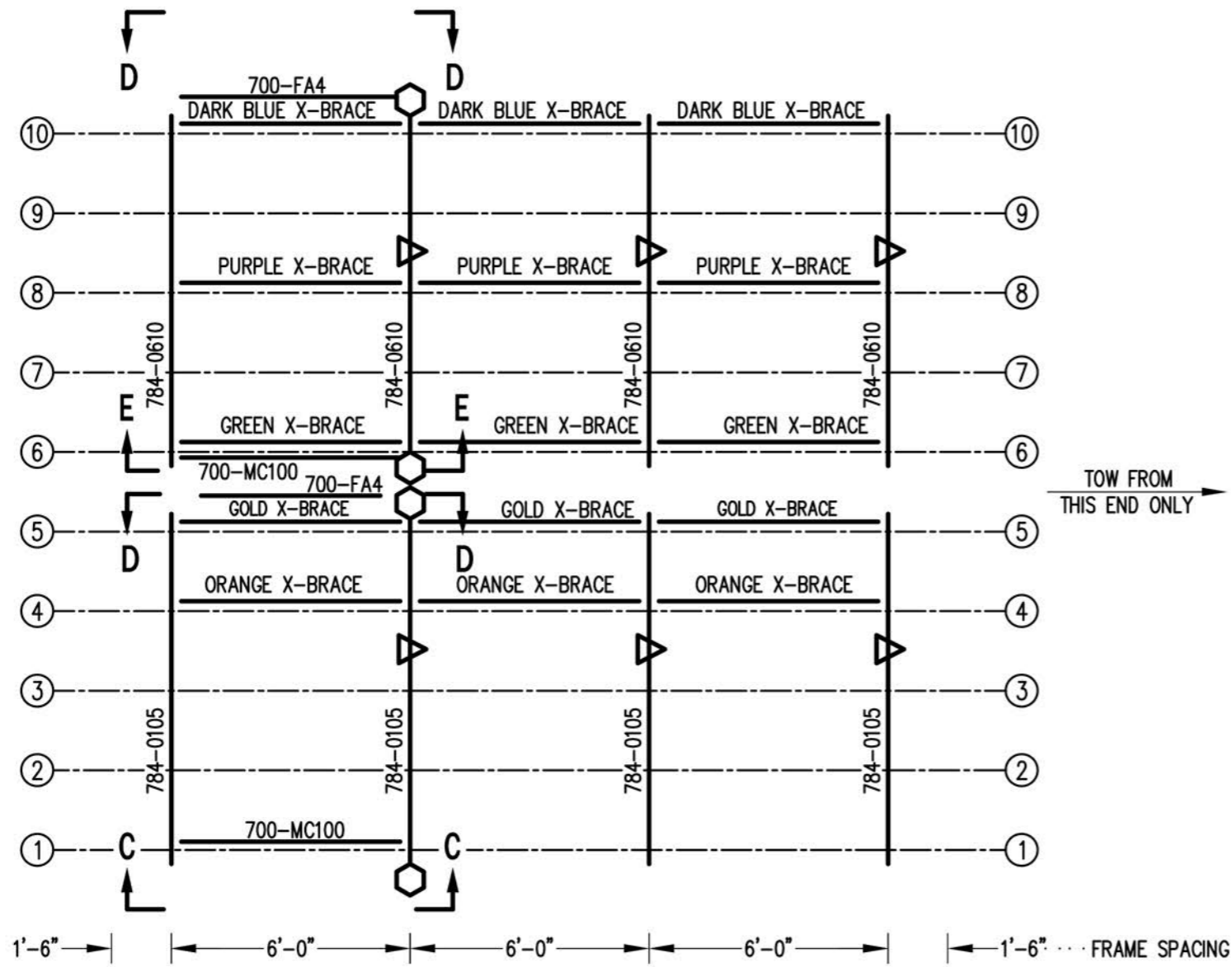


### SEATING PLAN

1/4" = 1'-0"

104 NET SEATS @ 18" PER SEAT

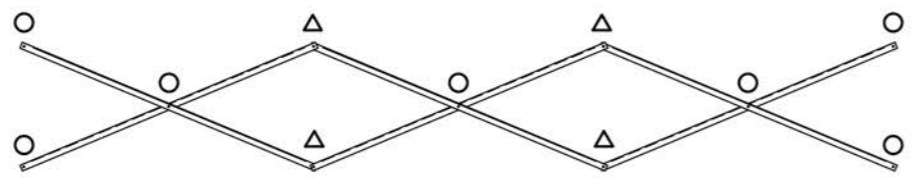


**FRAMING PLAN**

1/4" = 1'-0"

- DENOTES AXLE SLEEVE LOCATIONS
- ▷ DENOTES TONGUE GUIDE LOCATIONS

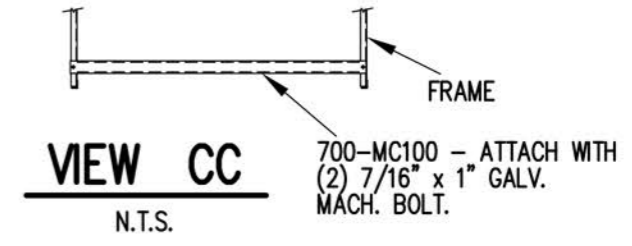
TOW FROM THIS END ONLY



**X-BRACE DETAIL**

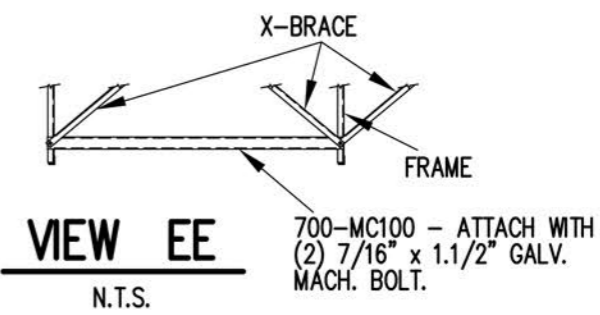
N.T.S.

- 7/16" X 1" GALV. MACH. BOLT
- △ 7/16" X 1.1/2" GALV. MACH. BOLT



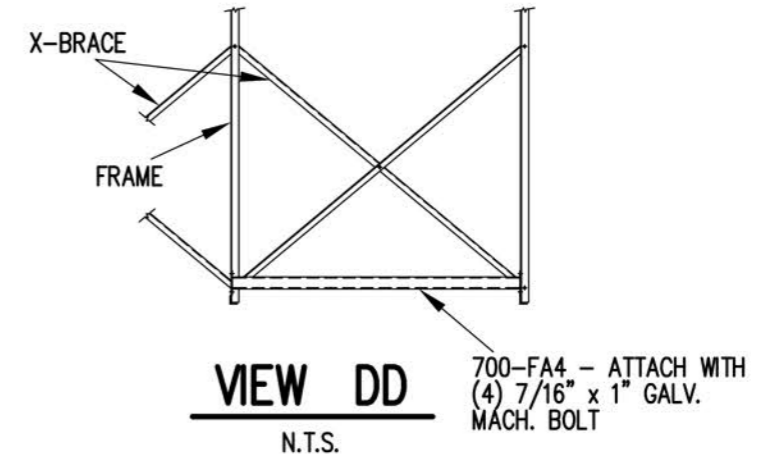
**VIEW CC**

N.T.S.



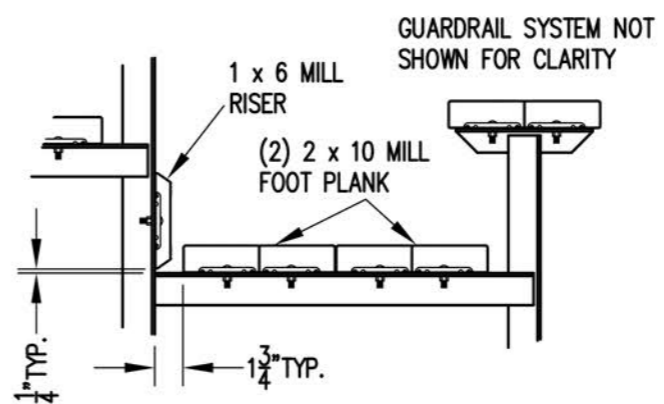
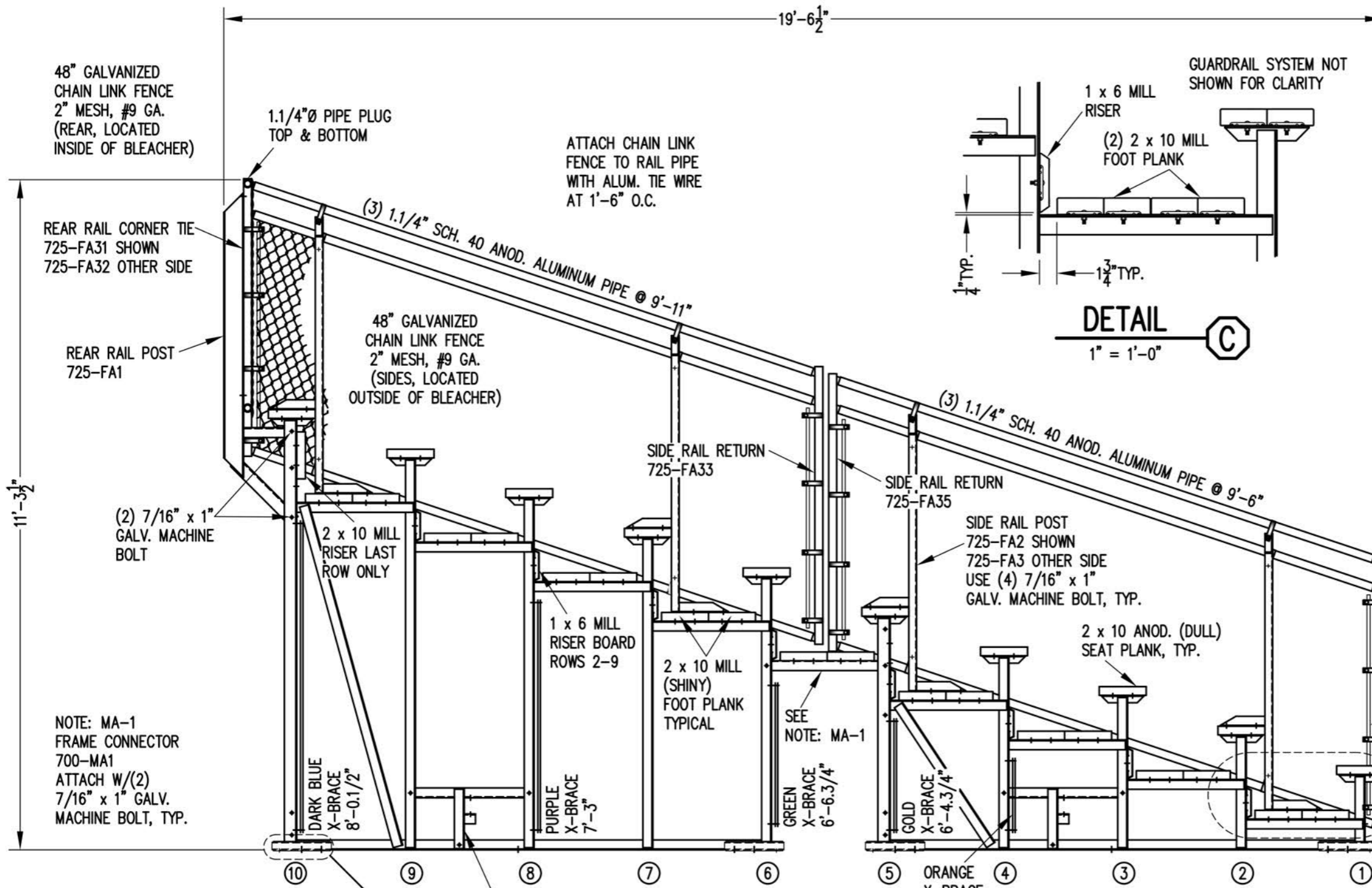
**VIEW EE**

N.T.S.

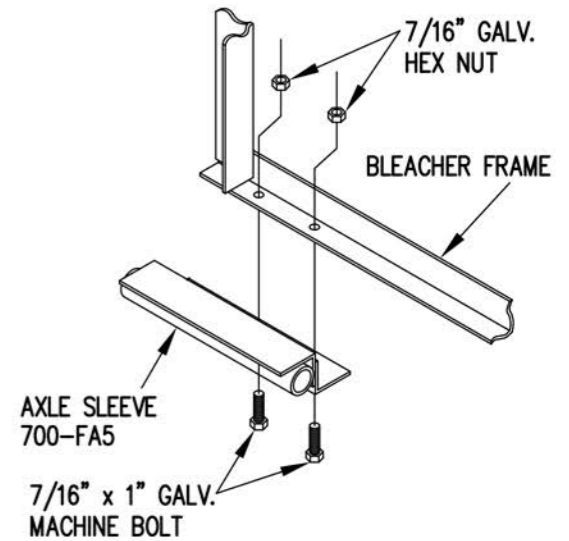


**VIEW DD**

N.T.S.



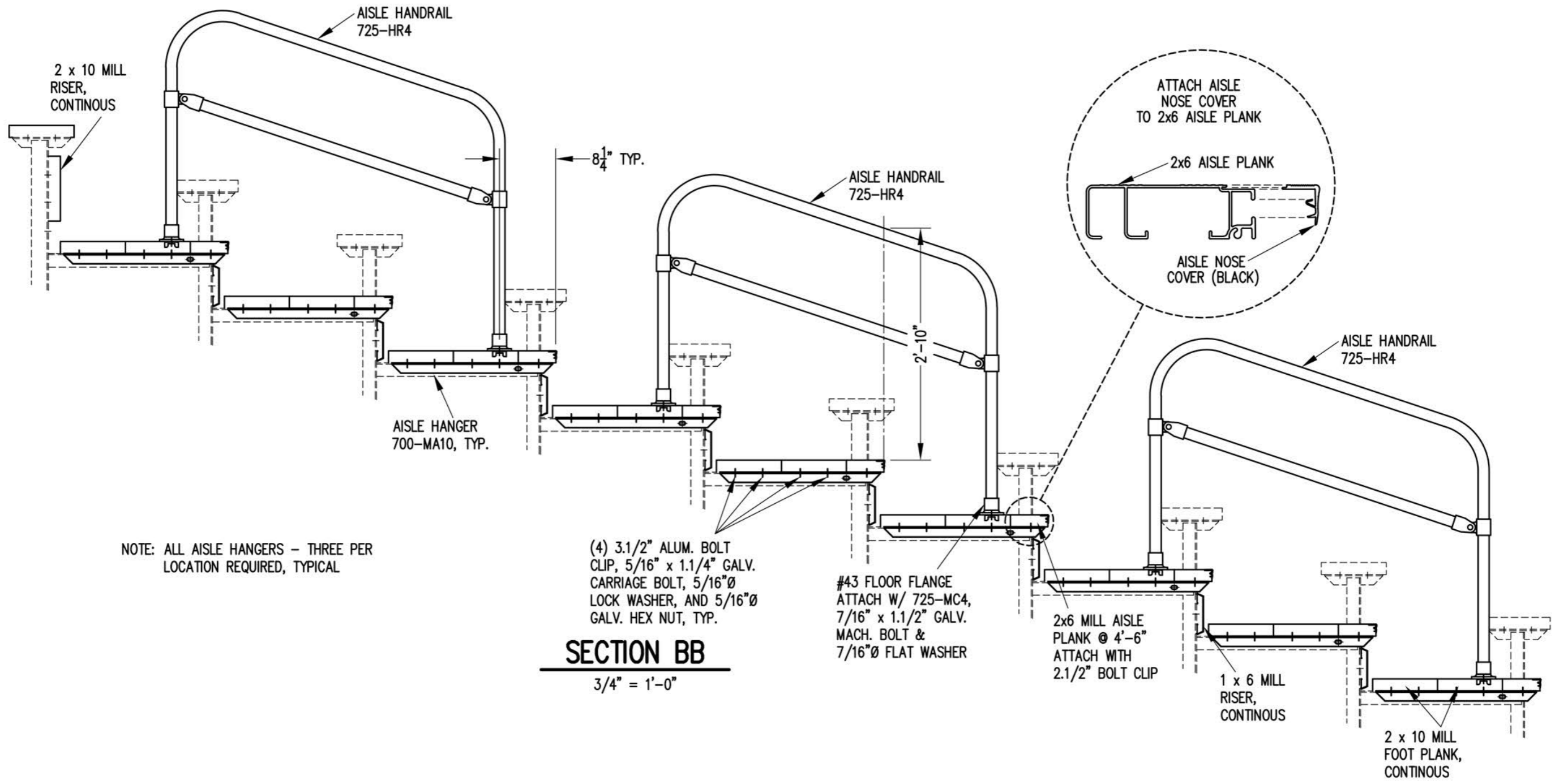
**DETAIL C**  
1" = 1'-0"



**AXLE SLEEVE DETAIL S**  
1" = 1'-0"

**SECTION AA**  
1/2" = 1'-0"

'T' TONGUE GUIDE 700-FA1 ATTACH WITH (3) 7/16" x 1" GALV. MACHINE BOLT, TYP. SEE FRAMING PLAN FOR LOCATIONS



NOTE: ALL AISLE HANGERS - THREE PER LOCATION REQUIRED, TYPICAL

(4) 3.1/2" ALUM. BOLT CLIP, 5/16" x 1.1/4" GALV. CARRIAGE BOLT, 5/16"Ø LOCK WASHER, AND 5/16"Ø GALV. HEX NUT, TYP.

**SECTION BB**

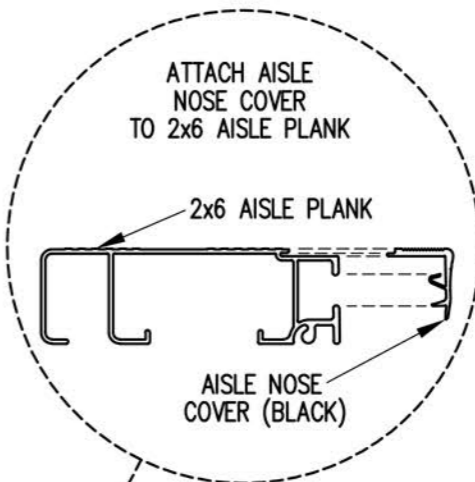
3/4" = 1'-0"

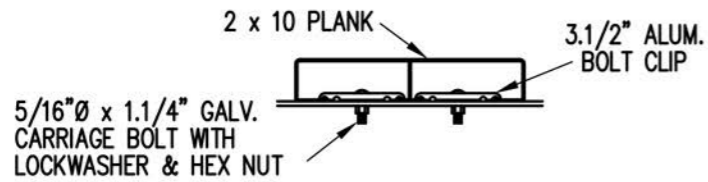
#43 FLOOR FLANGE ATTACH W/ 725-MC4, 7/16" x 1.1/2" GALV. MACH. BOLT & 7/16"Ø FLAT WASHER

2x6 MILL AISLE PLANK @ 4'-6" ATTACH WITH 2.1/2" BOLT CLIP

1 x 6 MILL RISER, CONTINUOUS

2 x 10 MILL FOOT PLANK, CONTINUOUS





**BOLT CLIP DETAIL**

1.1/2" = 1'-0"

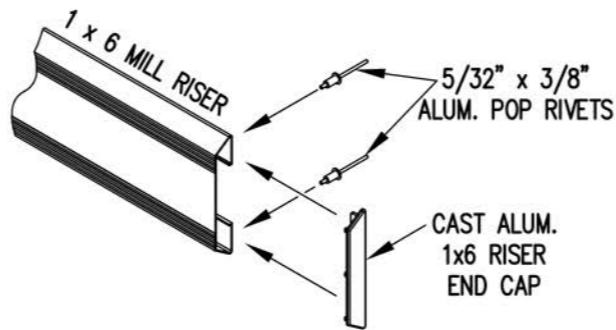


FIG.1 FIG.2

- 1) LOCATE THE CHANNEL END CAP AS SHOWN IN FIG. 1.
- 2) TAP END CAP INTO PLACE WITH RUBBER Mallet OR SOFT WOOD. FIG.2
- 3) DRILL 5/32" HOLES THROUGH THE BOTTOM FLANGE AND THE BOTTOM OUTSIDE PLANK FLANGES OF EACH PLANK. INSTALL 5/32" POP RIVETS.

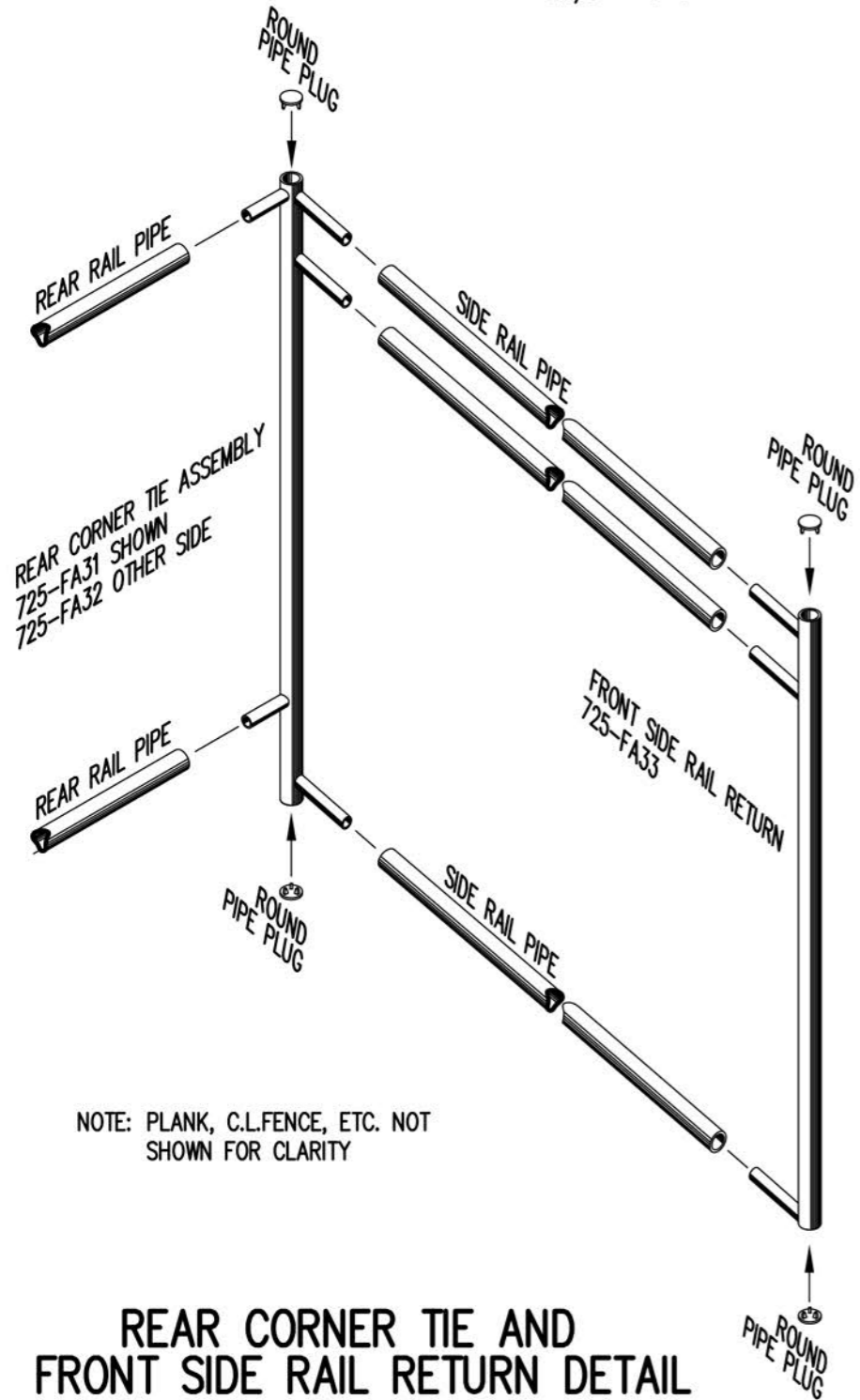
**END CAP DETAIL**

N.T.S.



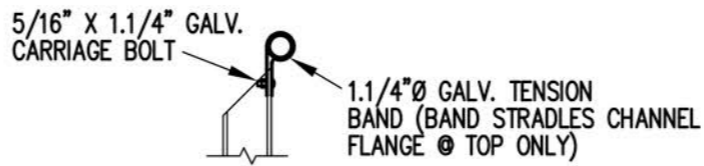
**1 x 6 RISER END CAP**

N.T.S.

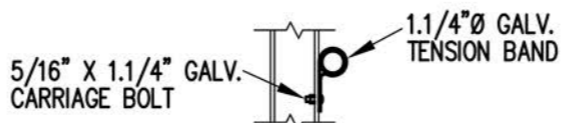


**REAR CORNER TIE AND FRONT SIDE RAIL RETURN DETAIL**

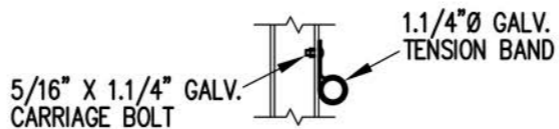
3/4" = 1'-0"



**TOP RAIL**

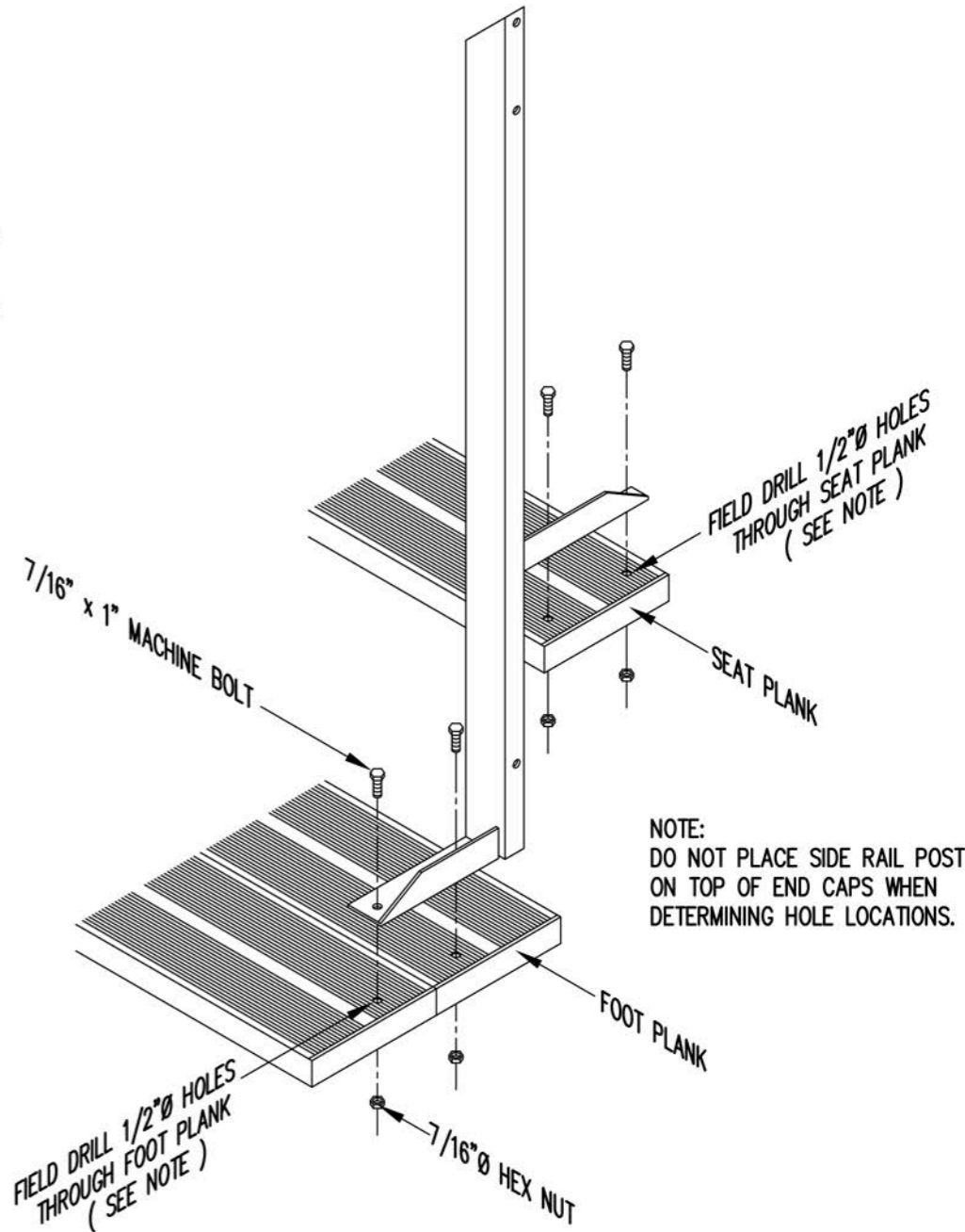


**2ND RAIL**



**BOTTOM RAIL**

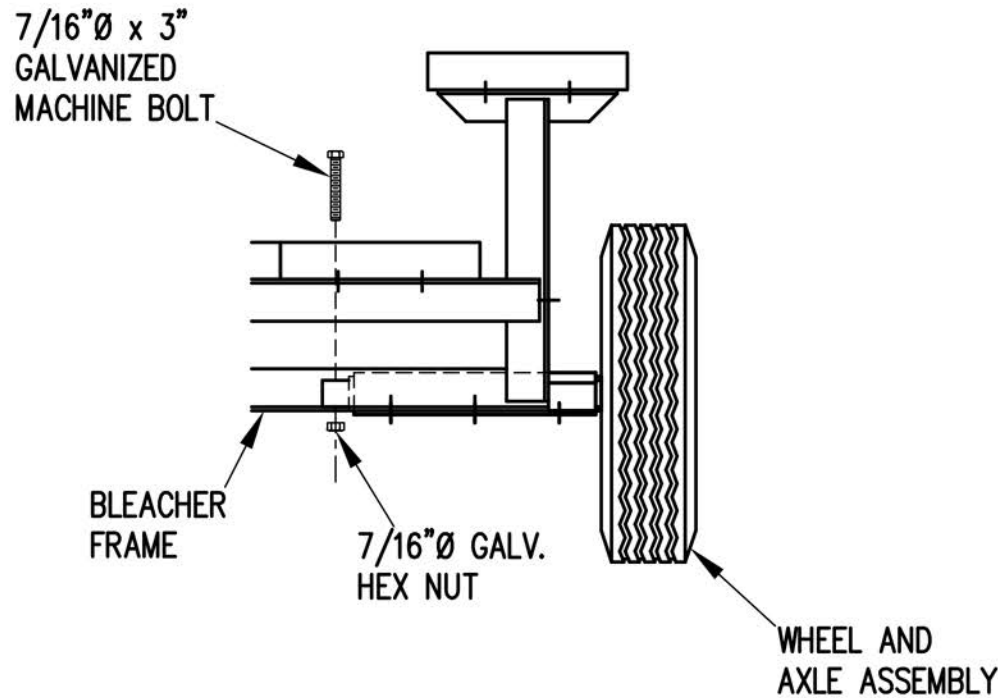
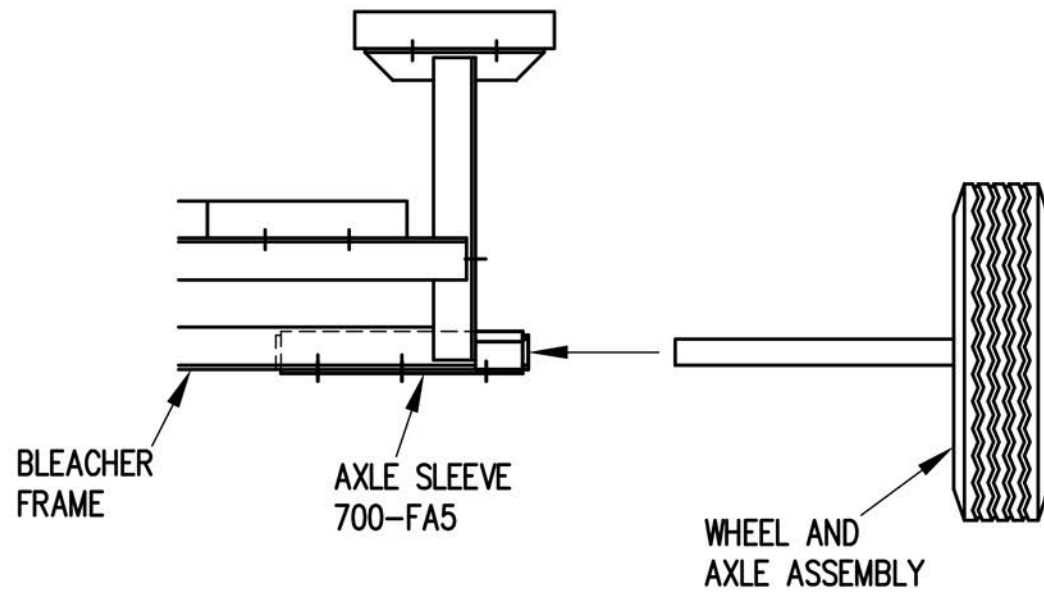
**RAIL PIPE ATTACHMENT**



**TYP. SIDE RAIL POST ATTACHMENT**

1" = 1'-0"

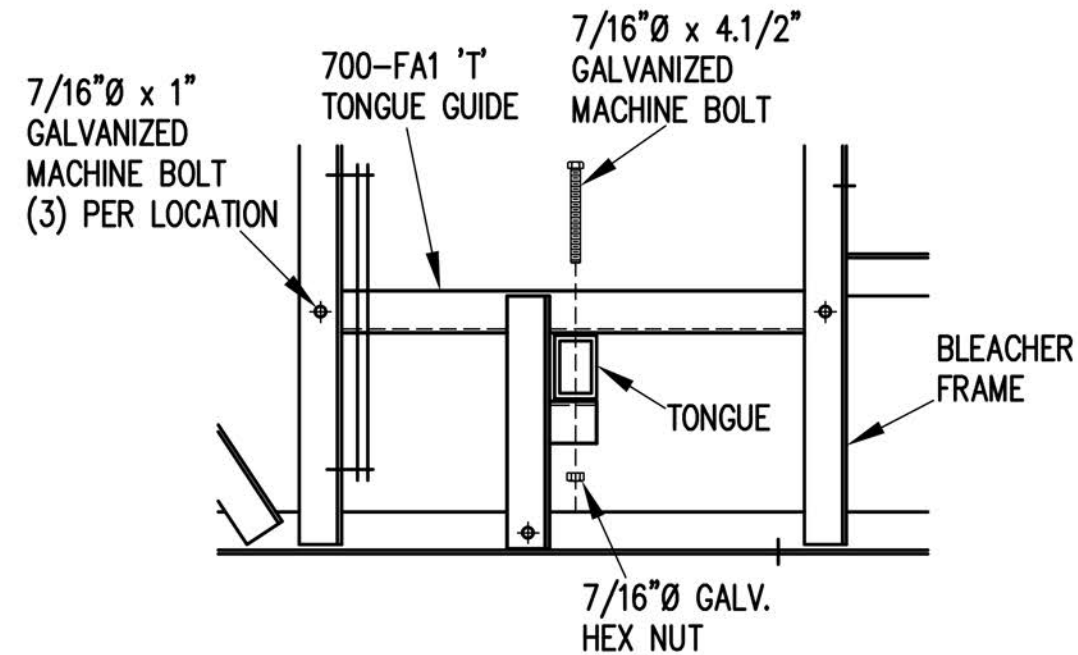
NOTE: SEE FRAMING PLAN FOR LOCATION OF AXLE SLEEVES AND TONGUE GUIDES.



1. ELEVATE BLEACHER TO RECEIVE WHEEL UNITS.
2. INSERT WHEEL AND AXLE ASSEMBLY INTO AXLE SLEEVE AS SHOWN.
3. INSERT 7/16" X 3" GALVANIZED MACHINE BOLT THROUGH AXLE TO SECURE IN AXLE SLEEVE.

## WHEEL AND AXLE ATTACHMENT

1" = 1'-0"

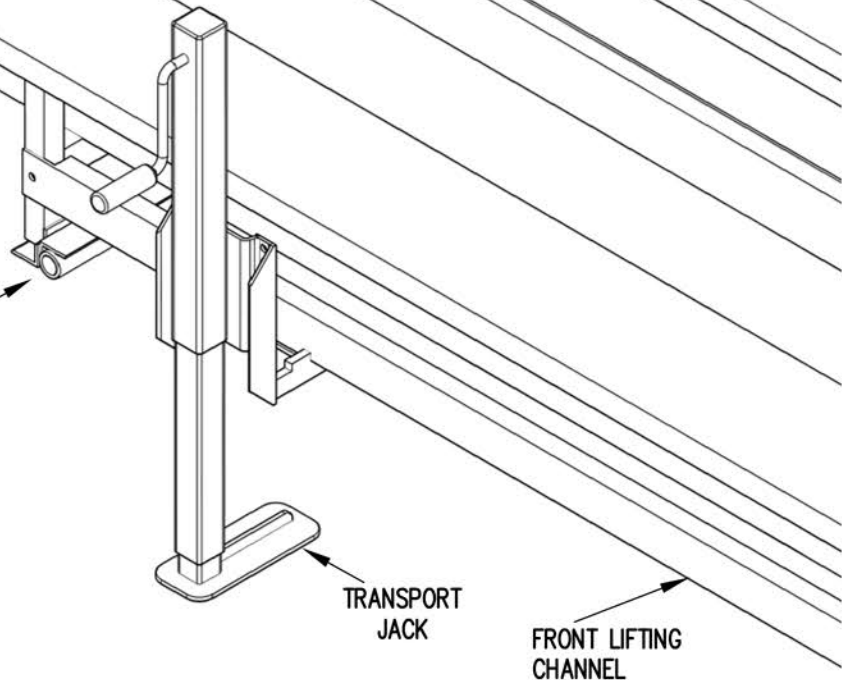
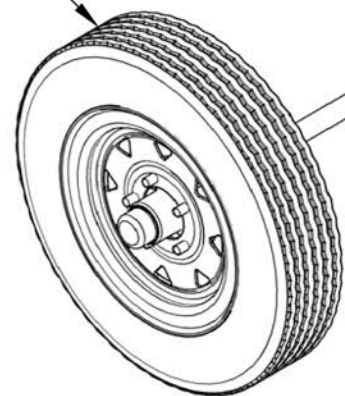


1. INSERT TONGUE THROUGH TONGUE GUIDES.
2. ATTACH TONGUE TO TONGUE BRACKETS WITH 7/16" X 4.1/2" GALVANIZED MACHINE BOLTS AS SHOWN.
3. TIGHTEN SECURELY.

## TONGUE ATTACHMENT

1" = 1'-0"

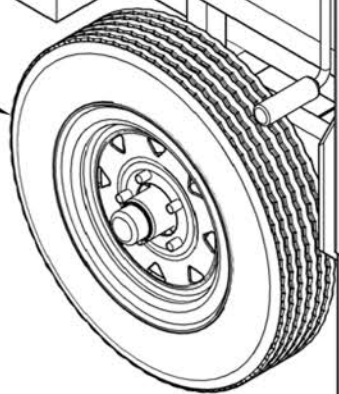
WHEEL AND AXLE ASSEMBLY



TRANSPORT JACK

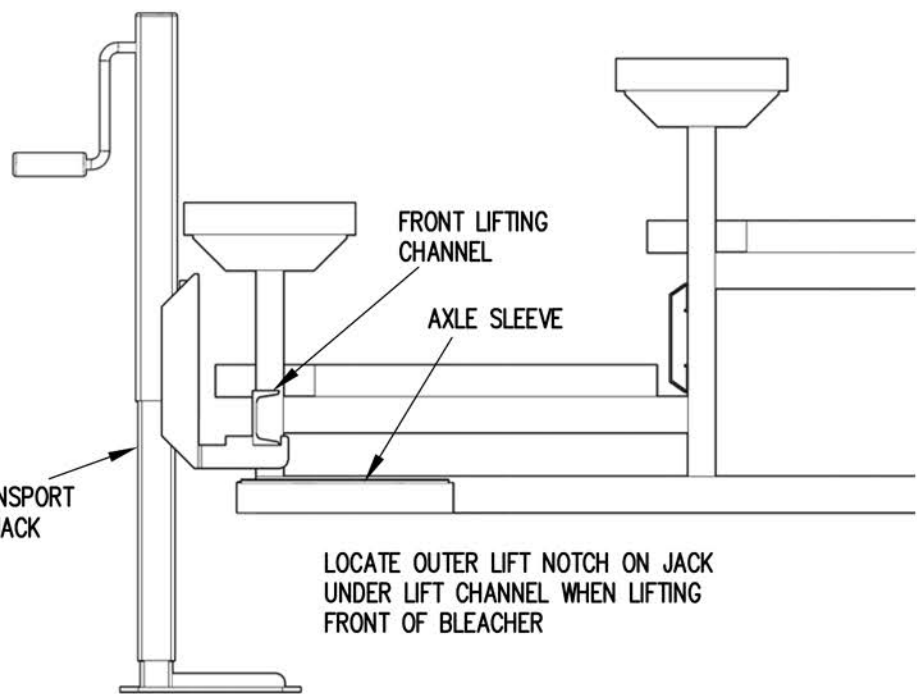
FRONT LIFTING CHANNEL

WHEEL AND AXLE ASSEMBLY



TRANSPORT JACK

FRONT LIFTING CHANNEL

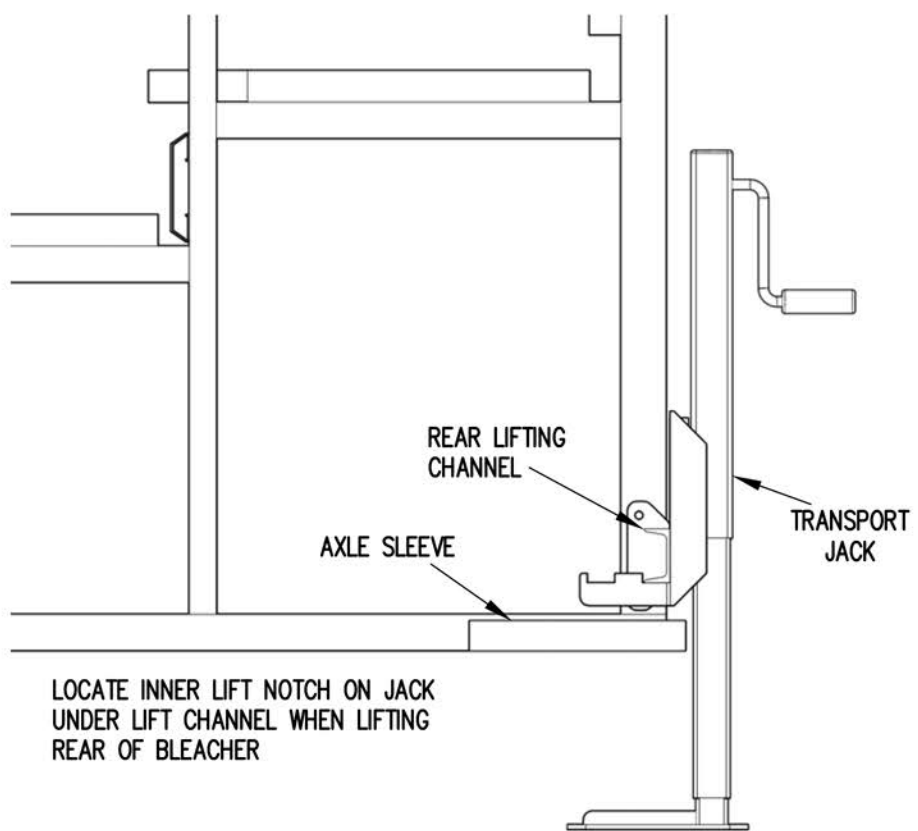


FRONT LIFTING CHANNEL

AXLE SLEEVE

TRANSPORT JACK

LOCATE OUTER LIFT NOTCH ON JACK UNDER LIFT CHANNEL WHEN LIFTING FRONT OF BLEACHER

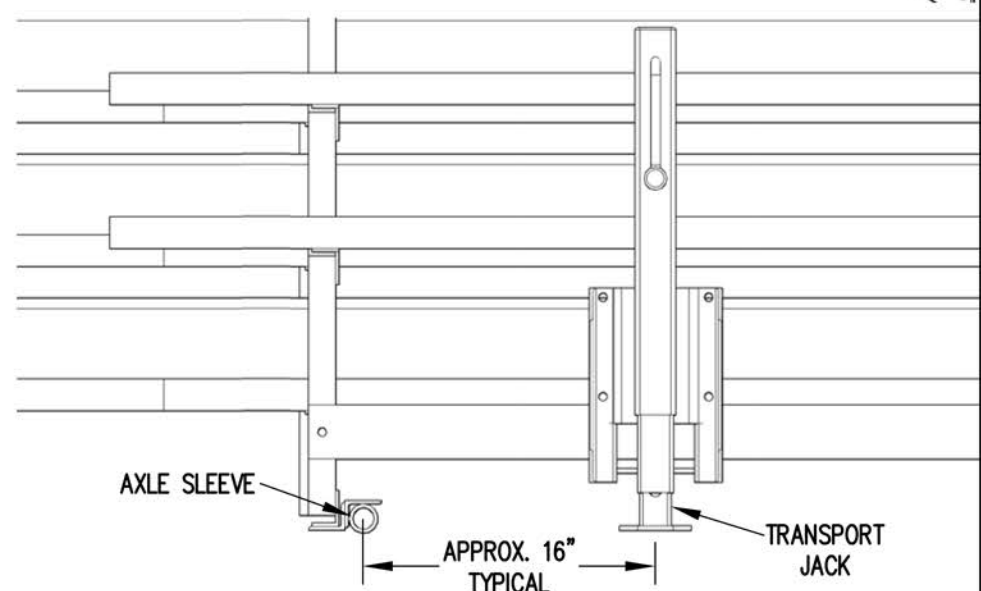


REAR LIFTING CHANNEL

AXLE SLEEVE

TRANSPORT JACK

LOCATE INNER LIFT NOTCH ON JACK UNDER LIFT CHANNEL WHEN LIFTING REAR OF BLEACHER



AXLE SLEEVE

APPROX. 16" TYPICAL

TRANSPORT JACK