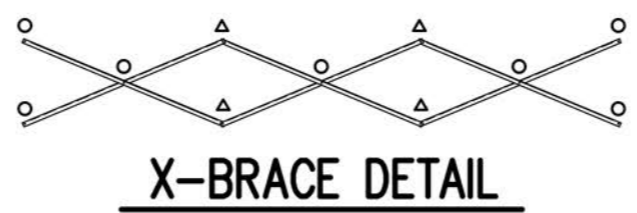
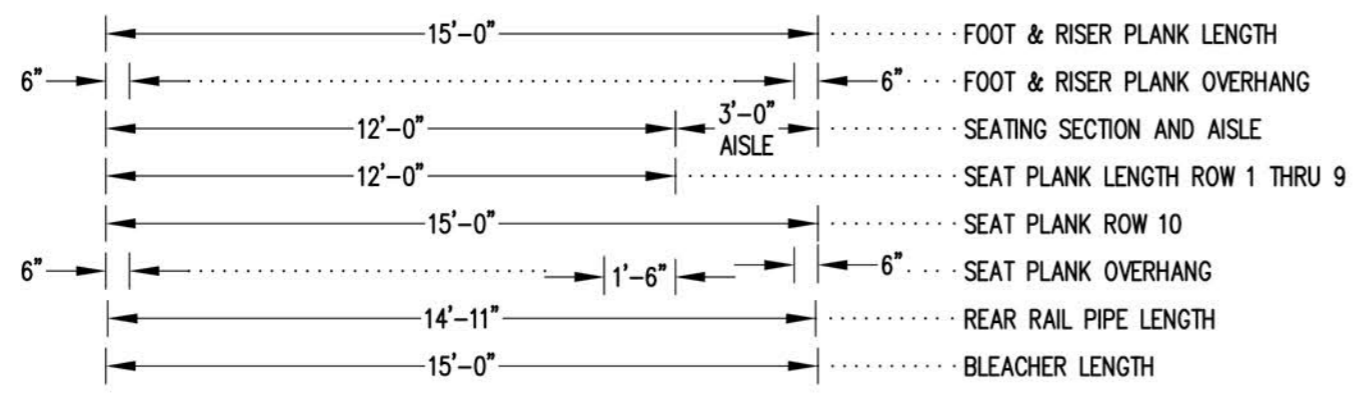
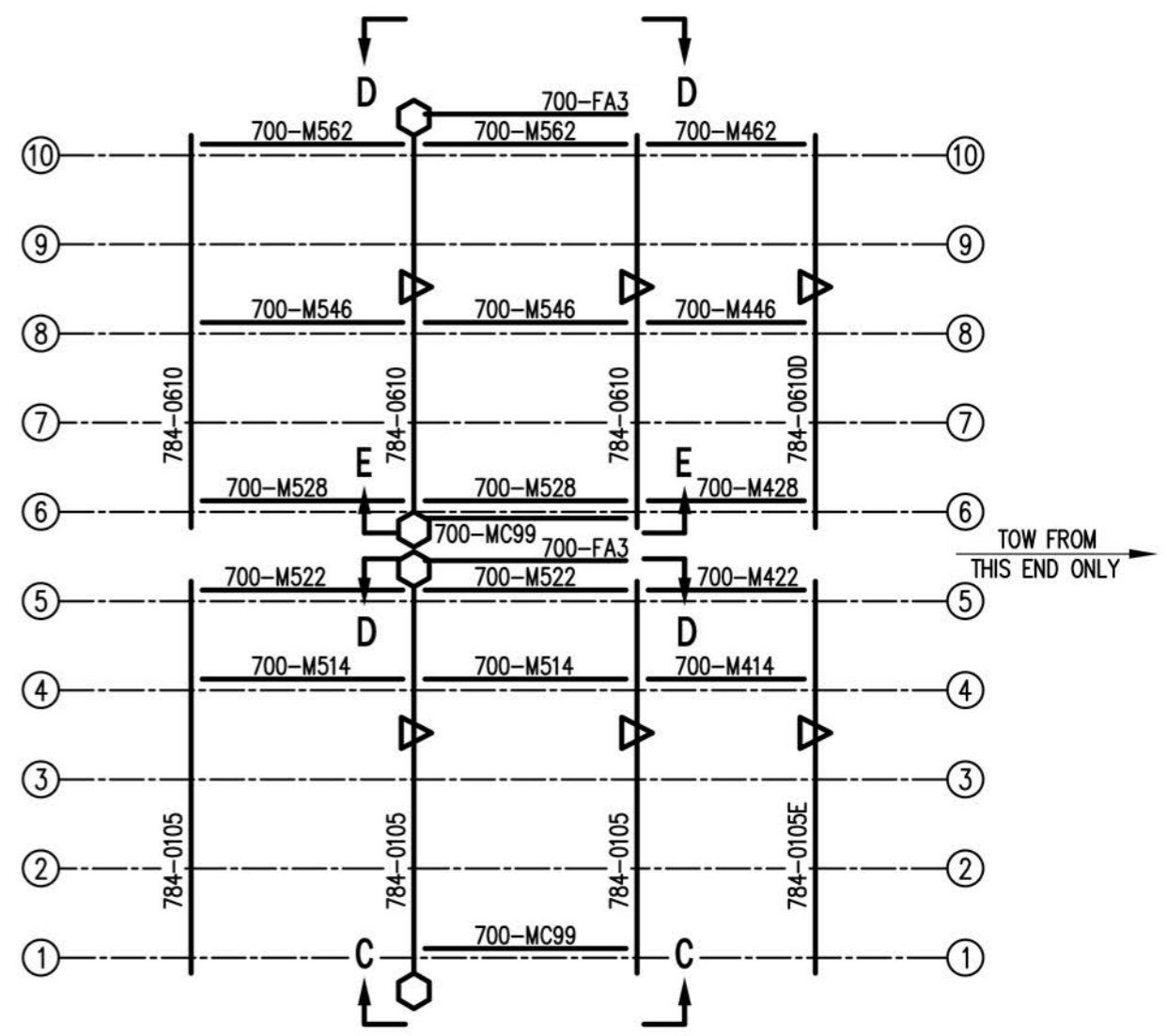
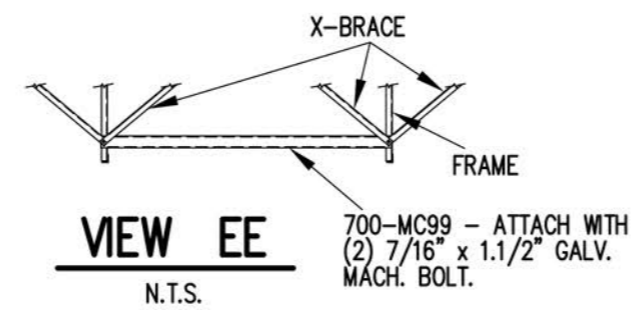
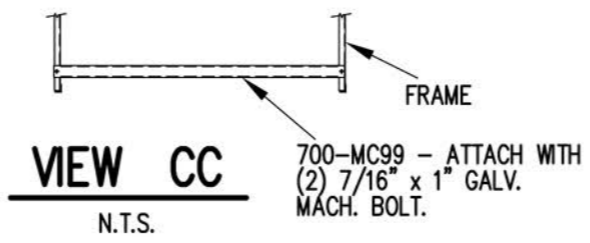


SEE REAR CORNER TIE
ASSEMBLY DETAIL
SEE DWG. 784-E2000



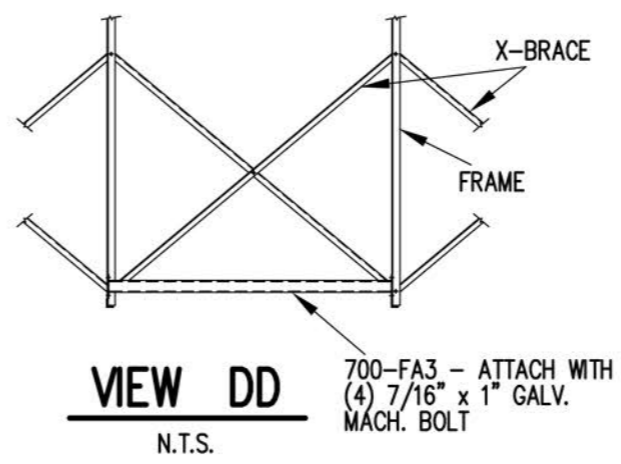
- 7/16" X 1" GALV. MACH. BOLT
- △ 7/16" X 1.1/2" GALV. MACH. BOLT

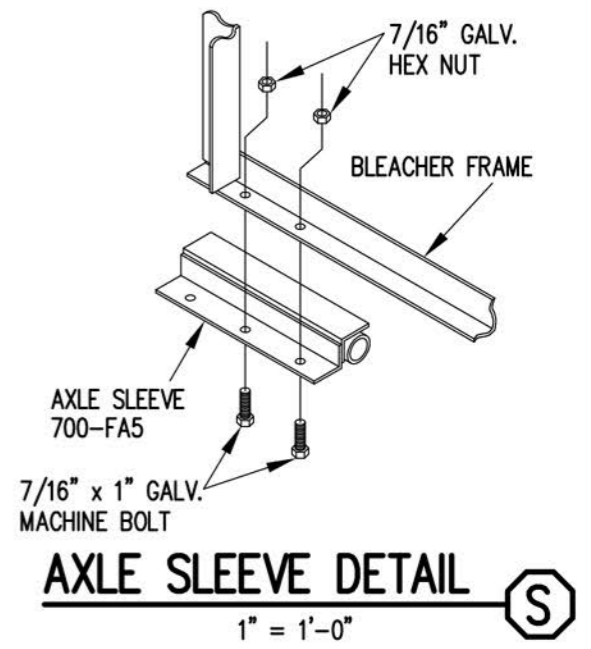
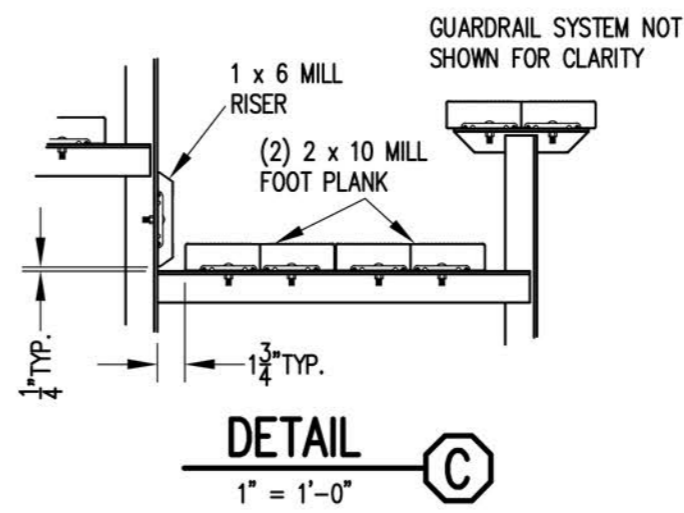
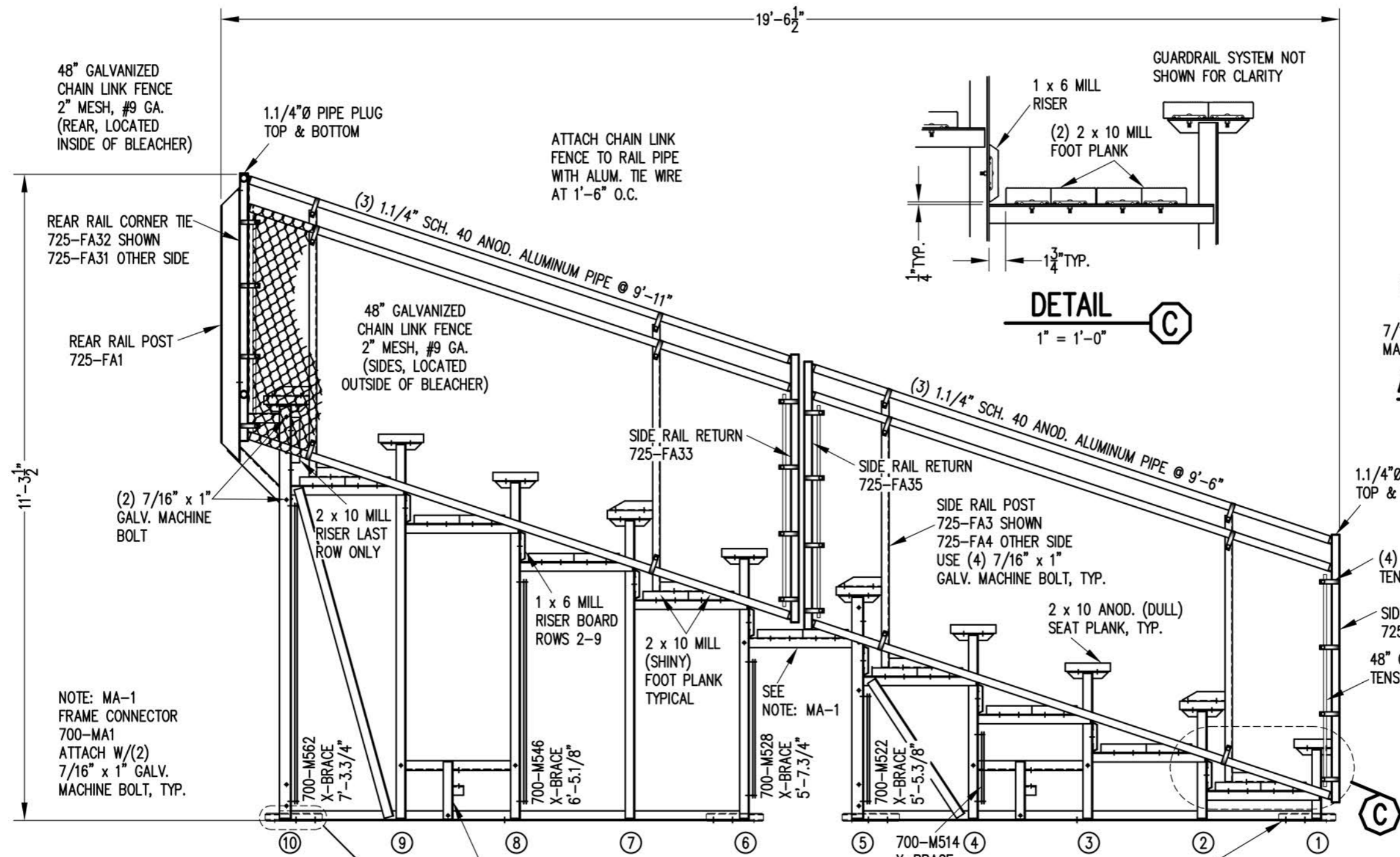


SEATING PLAN
1/4" = 1'-0"
82 NET SEATS @ 18" PER SEAT



- DENOTES AXLE SLEEVE LOCATIONS
- △ DENOTES TONGUE GUIDE LOCATIONS





48" GALVANIZED CHAIN LINK FENCE 2" MESH, #9 GA. (REAR, LOCATED INSIDE OF BLEACHER)

1.1/4"Ø PIPE PLUG TOP & BOTTOM

ATTACH CHAIN LINK FENCE TO RAIL PIPE WITH ALUM. TIE WIRE AT 1'-6" O.C.

REAR RAIL CORNER TIE 725-FA32 SHOWN 725-FA31 OTHER SIDE

48" GALVANIZED CHAIN LINK FENCE 2" MESH, #9 GA. (SIDES, LOCATED OUTSIDE OF BLEACHER)

REAR RAIL POST 725-FA1

SIDE RAIL RETURN 725-FA33

SIDE RAIL RETURN 725-FA35

(2) 7/16" x 1" GALV. MACHINE BOLT

2 x 10 MILL RISER LAST ROW ONLY

1 x 6 MILL RISER BOARD ROWS 2-9

2 x 10 MILL (SHINY) FOOT PLANK TYPICAL

SEE NOTE: MA-1

SIDE RAIL POST 725-FA3 SHOWN 725-FA4 OTHER SIDE USE (4) 7/16" x 1" GALV. MACHINE BOLT, TYP.

2 x 10 ANOD. (DULL) SEAT PLANK, TYP.

1.1/4"Ø PIPE PLUG TOP & BOTTOM

(4) 1.1/4"Ø GALV. TENSION BAND

SIDE RAIL RETURN 725-FA33

48" GALV. TENSION BAR

NOTE: MA-1 FRAME CONNECTOR 700-MA1 ATTACH W/(2) 7/16" x 1" GALV. MACHINE BOLT, TYP.

700-M562 X-BRACE 7'-3.3/4"

700-M546 X-BRACE 6'-5.1/8"

700-M528 X-BRACE 5'-7.3/4"

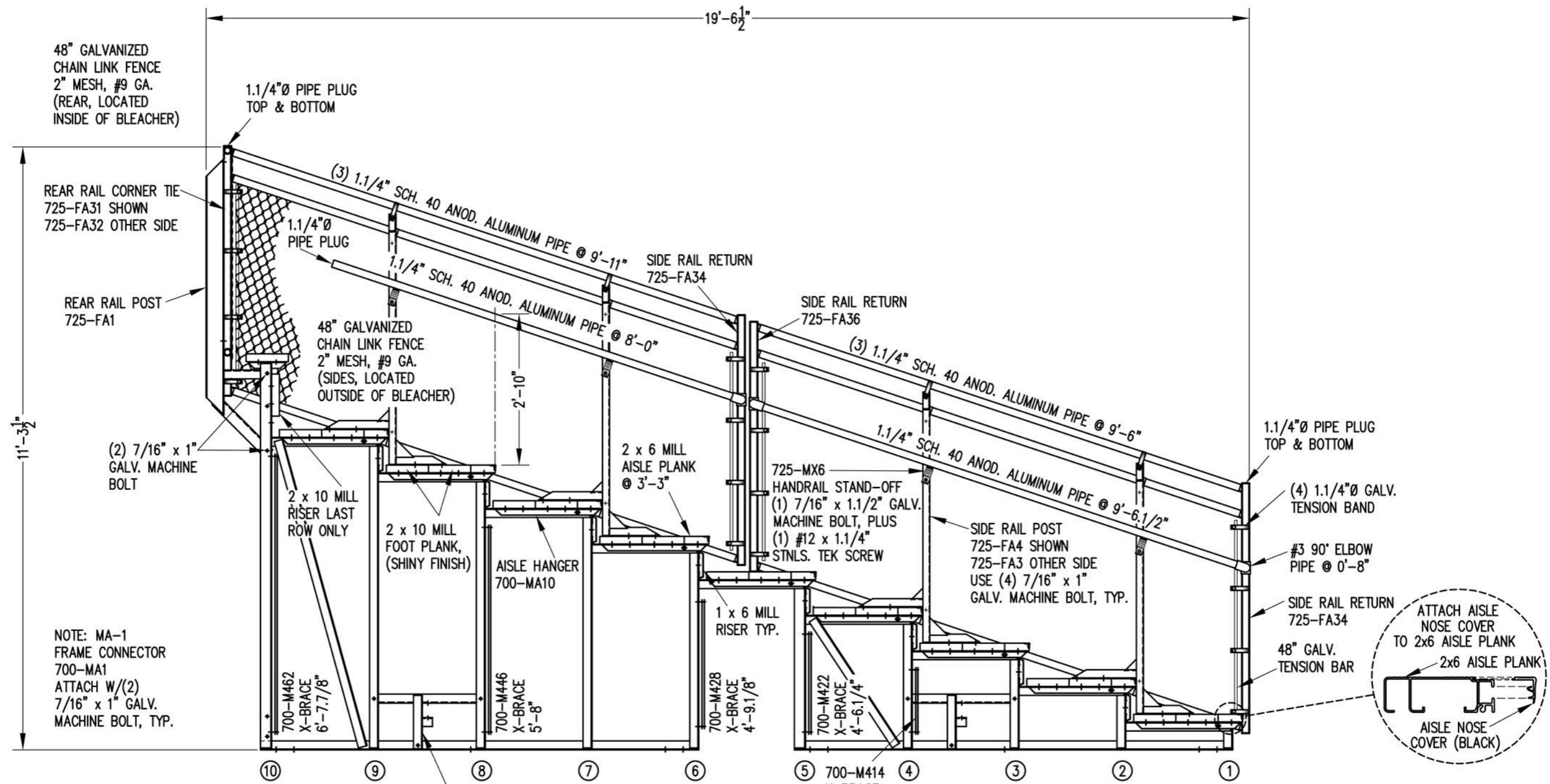
700-M522 X-BRACE 5'-5.3/8"

700-M514 X-BRACE 5'-3.1/8"

'T' TONGUE GUIDE 700-FA1 ATTACH WITH (3) 7/16" x 1" GALV. MACHINE BOLT, TYP. SEE FRAMING PLAN FOR LOCATIONS

VIEW AA
1/2" = 1'-0"

AXLE SLEEVE 700-FA5 ATTACH WITH (2) 7/16" x 1" GALV. MACHINE BOLT, TYP. SEE FRAMING PLAN FOR LOCATIONS

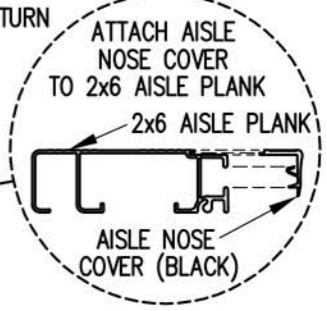


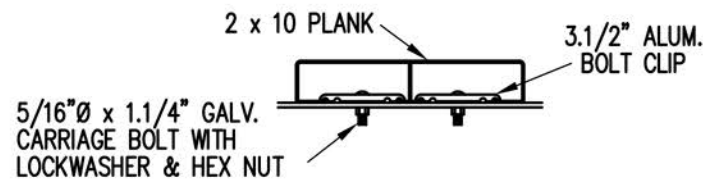
NOTE: MA-1
FRAME CONNECTOR
700-MA1
ATTACH W/(2)
7/16" x 1" GALV.
MACHINE BOLT, TYP.

NOTE: ALL AISLE HANGERS - THREE PER
LOCATION REQUIRED, TYPICAL

1" TONGUE GUIDE
700-FA1
ATTACH WITH (3)
7/16" x 1" GALV.
MACHINE BOLT, TYP.
SEE FRAMING PLAN
FOR LOCATIONS

SECTION BB
1/2" = 1'-0"





BOLT CLIP DETAIL

1.1/2" = 1'-0"



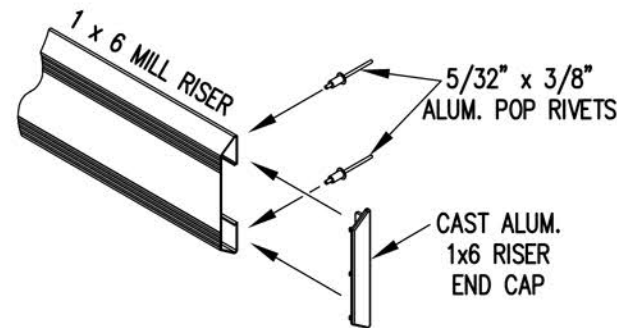
FIG.1

FIG.2

- 1) LOCATE THE CHANNEL END CAP AS SHOWN IN FIG. 1.
- 2) TAP END CAP INTO PLACE WITH RUBBER Mallet OR SOFT WOOD. FIG.2
- 3) DRILL 5/32" HOLES THROUGH THE BOTTOM FLANGE AND THE BOTTOM OUTSIDE PLANK FLANGES OF EACH PLANK. INSTALL 5/32" POP RIVETS.

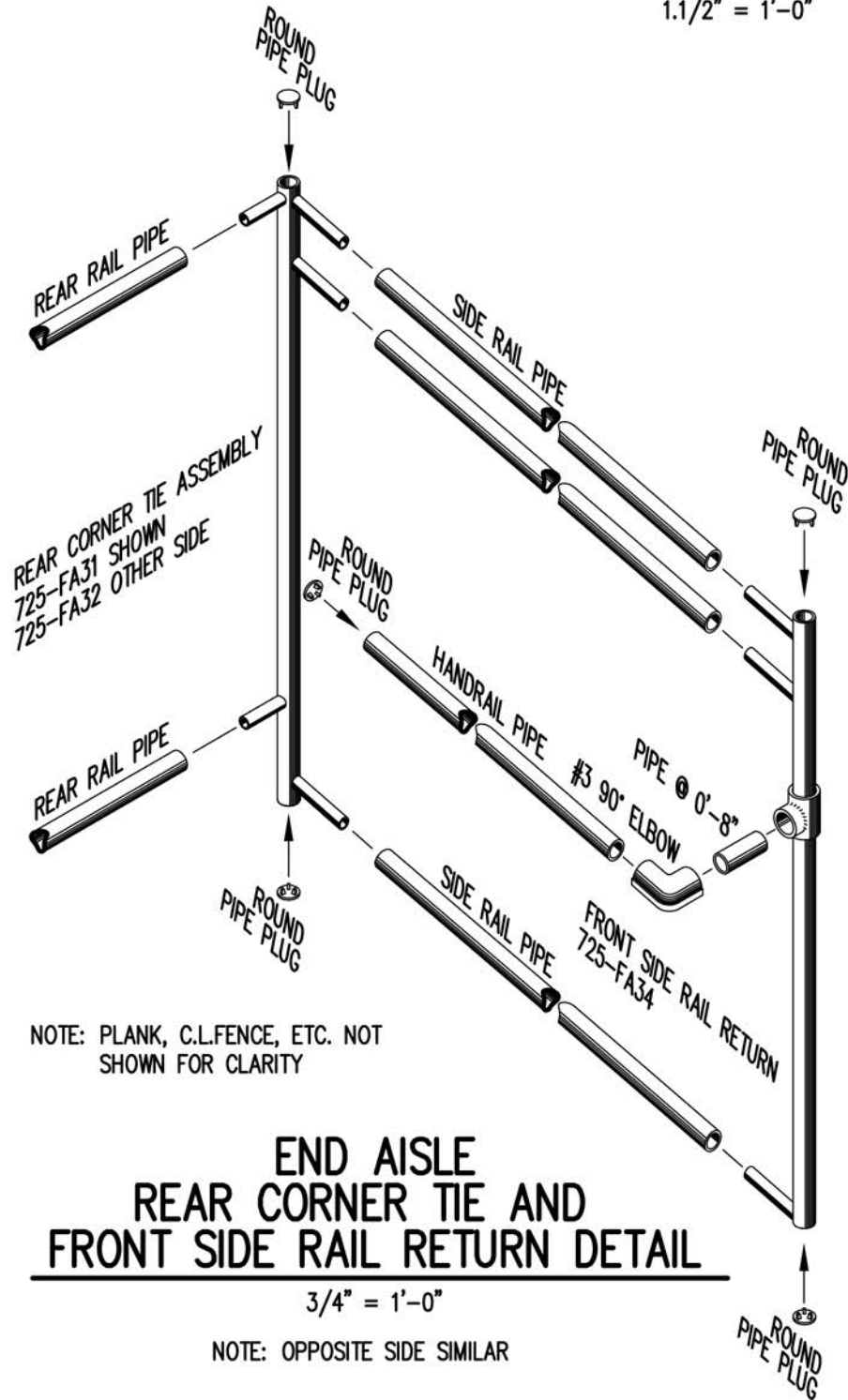
END CAP DETAIL

N.T.S.



1 x 6 RISER END CAP

N.T.S.

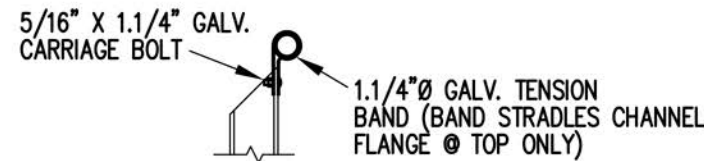


NOTE: PLANK, C.L.FENCE, ETC. NOT SHOWN FOR CLARITY

END AISLE REAR CORNER TIE AND FRONT SIDE RAIL RETURN DETAIL

3/4" = 1'-0"

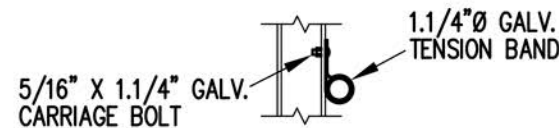
NOTE: OPPOSITE SIDE SIMILAR



TOP RAIL

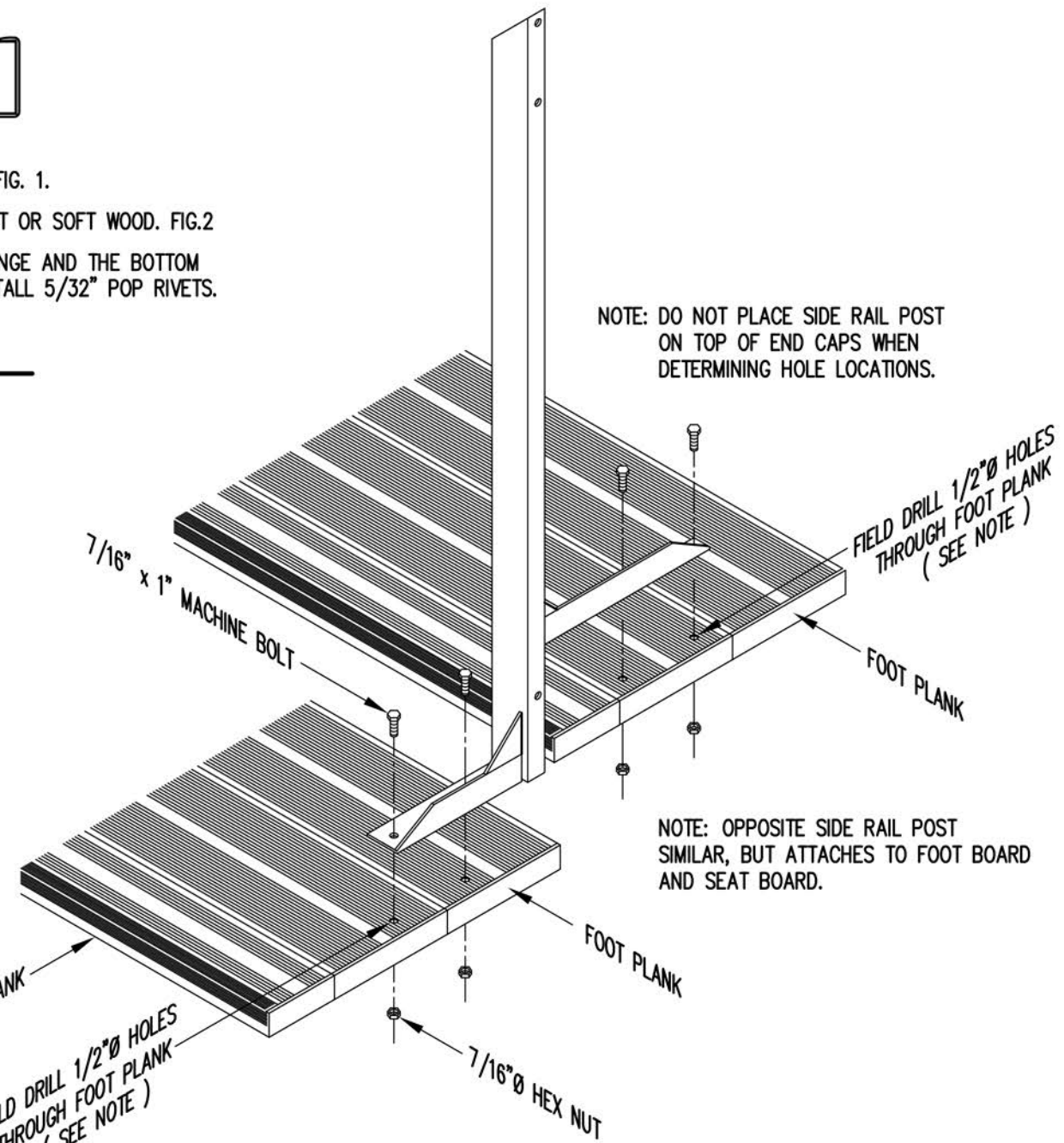


2ND RAIL



BOTTOM RAIL

RAIL PIPE ATTACHMENT



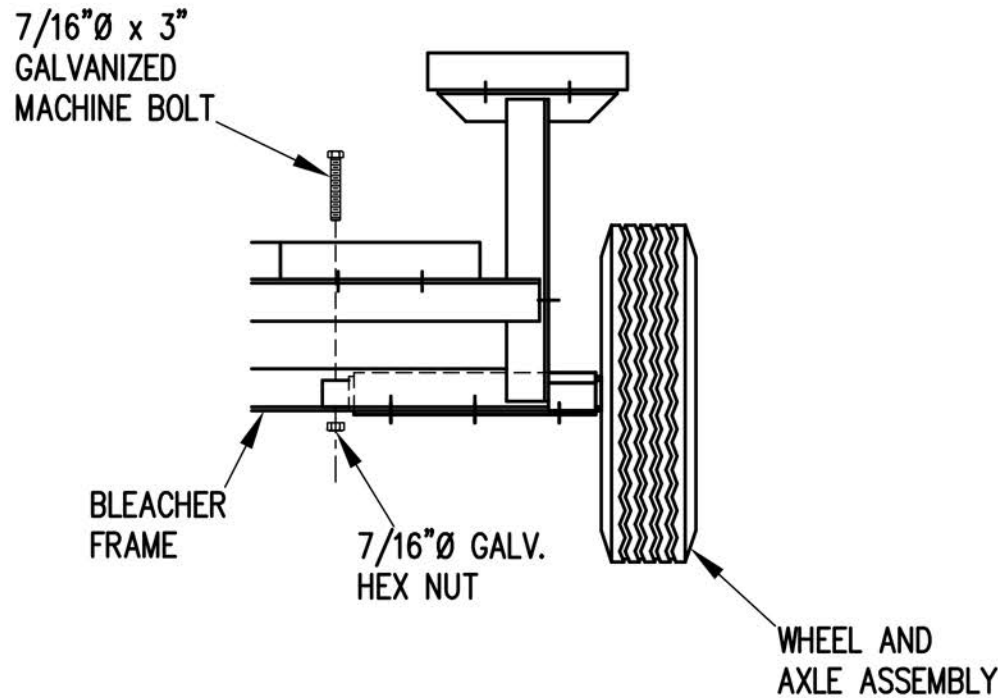
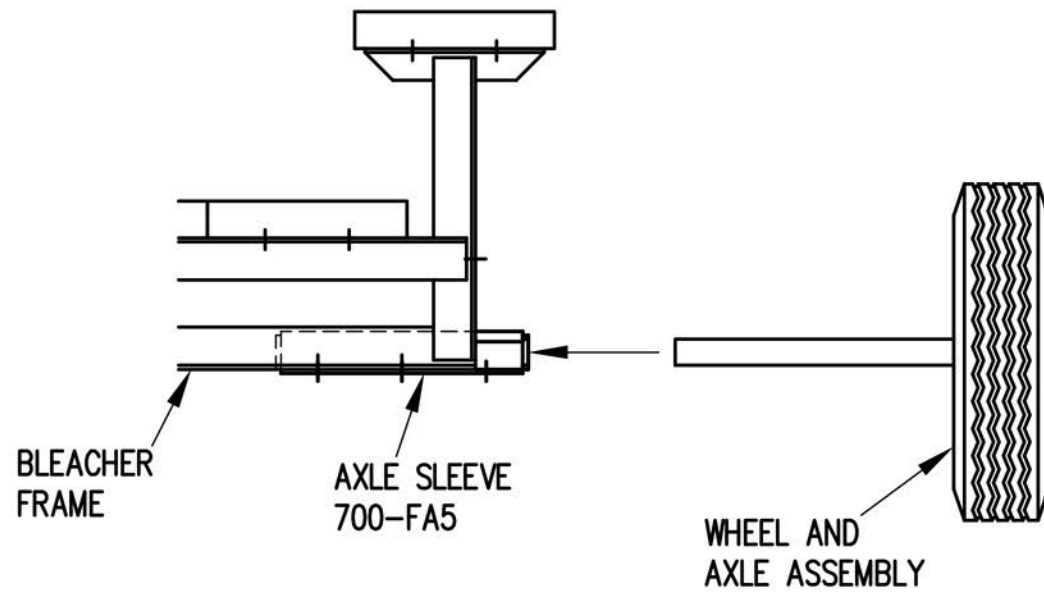
NOTE: DO NOT PLACE SIDE RAIL POST ON TOP OF END CAPS WHEN DETERMINING HOLE LOCATIONS.

NOTE: OPPOSITE SIDE RAIL POST SIMILAR, BUT ATTACHES TO FOOT BOARD AND SEAT BOARD.

TYP. SIDE RAIL POST ATTACHMENT AT END AISLE

1" = 1'-0"

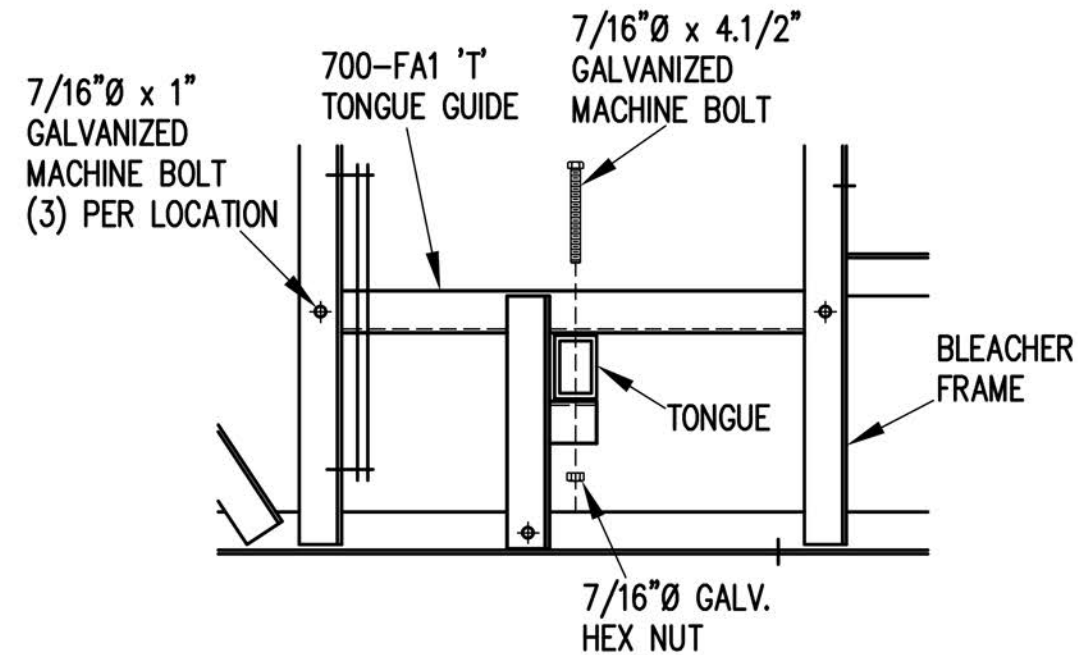
NOTE: SEE FRAMING PLAN FOR LOCATION OF AXLE SLEEVES AND TONGUE GUIDES.



1. ELEVATE BLEACHER TO RECEIVE WHEEL UNITS.
2. INSERT WHEEL AND AXLE ASSEMBLY INTO AXLE SLEEVE AS SHOWN.
3. INSERT 7/16" X 3" GALVANIZED MACHINE BOLT THROUGH AXLE TO SECURE IN AXLE SLEEVE.

WHEEL AND AXLE ATTACHMENT

1" = 1'-0"

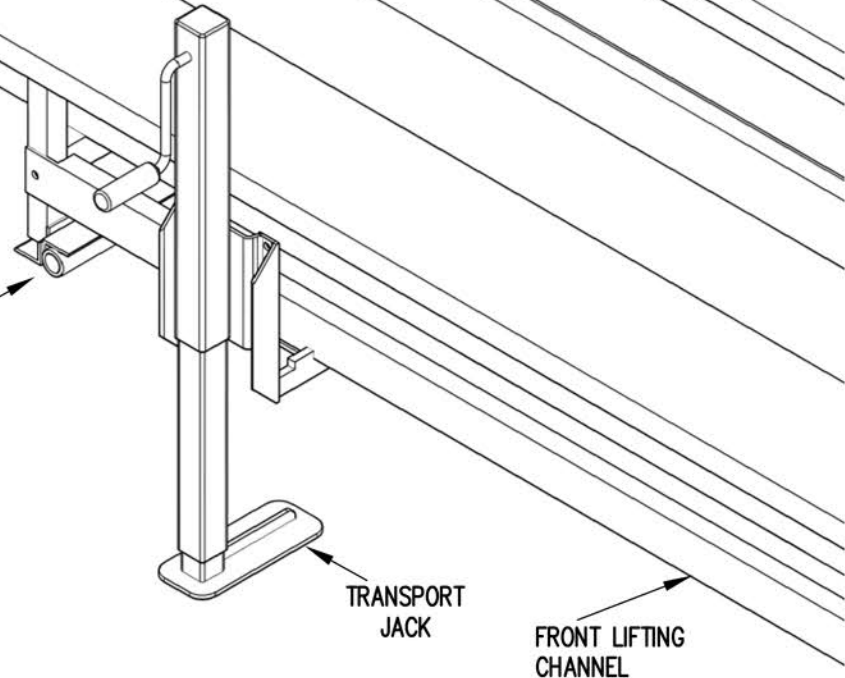
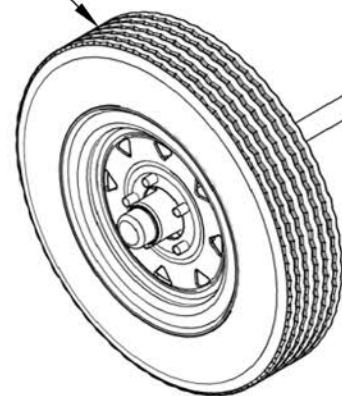


1. INSERT TONGUE THROUGH TONGUE GUIDES.
2. ATTACH TONGUE TO TONGUE BRACKETS WITH 7/16" X 4.1/2" GALVANIZED MACHINE BOLTS AS SHOWN.
3. TIGHTEN SECURELY.

TONGUE ATTACHMENT

1" = 1'-0"

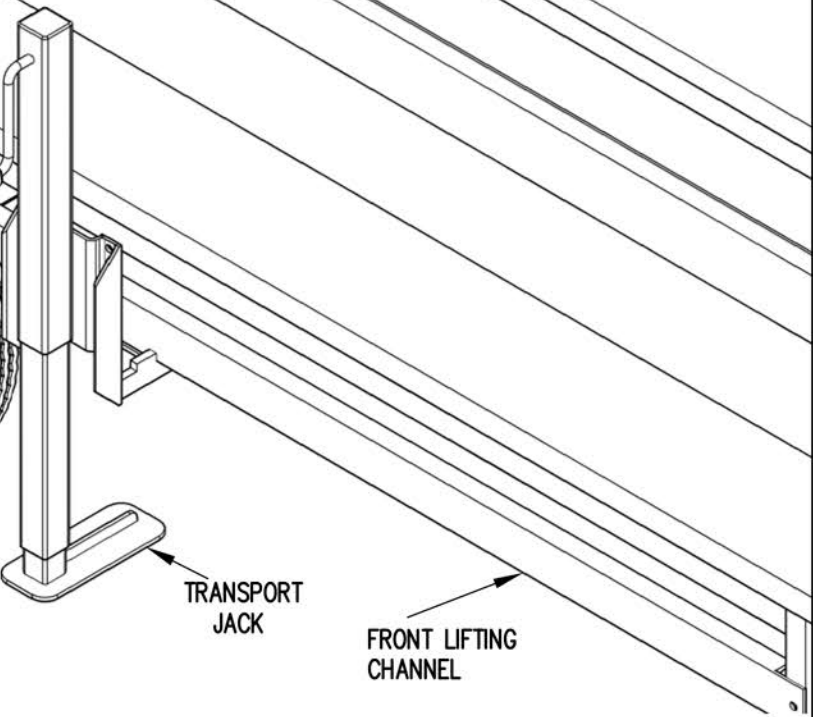
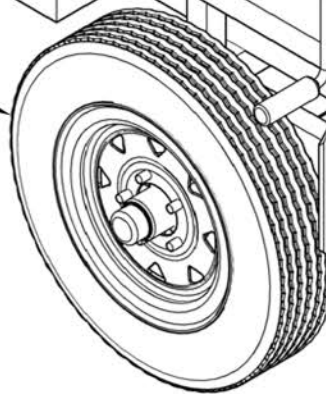
WHEEL AND AXLE ASSEMBLY



TRANSPORT JACK

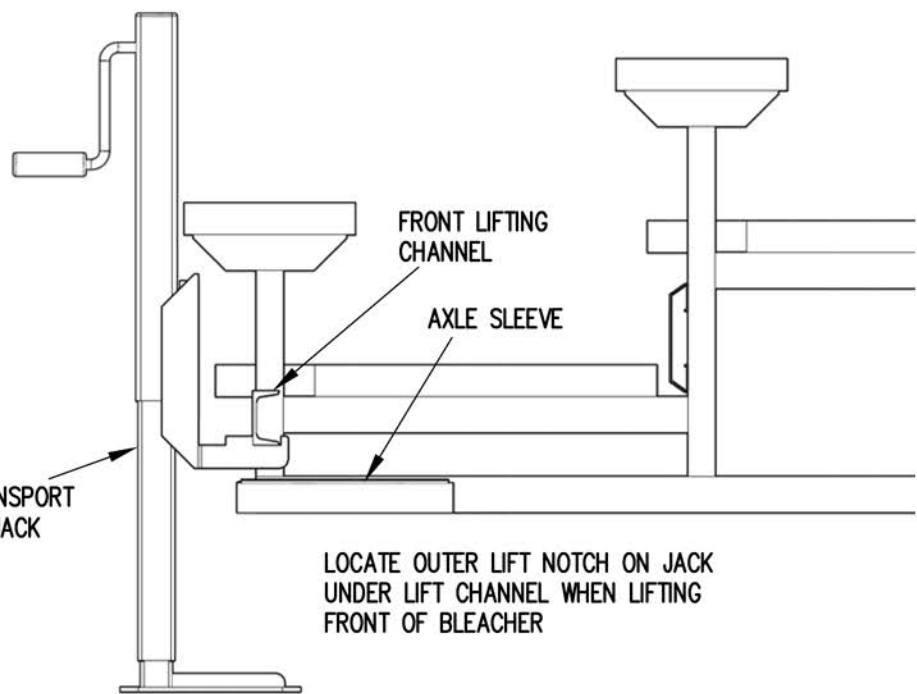
FRONT LIFTING CHANNEL

WHEEL AND AXLE ASSEMBLY



TRANSPORT JACK

FRONT LIFTING CHANNEL

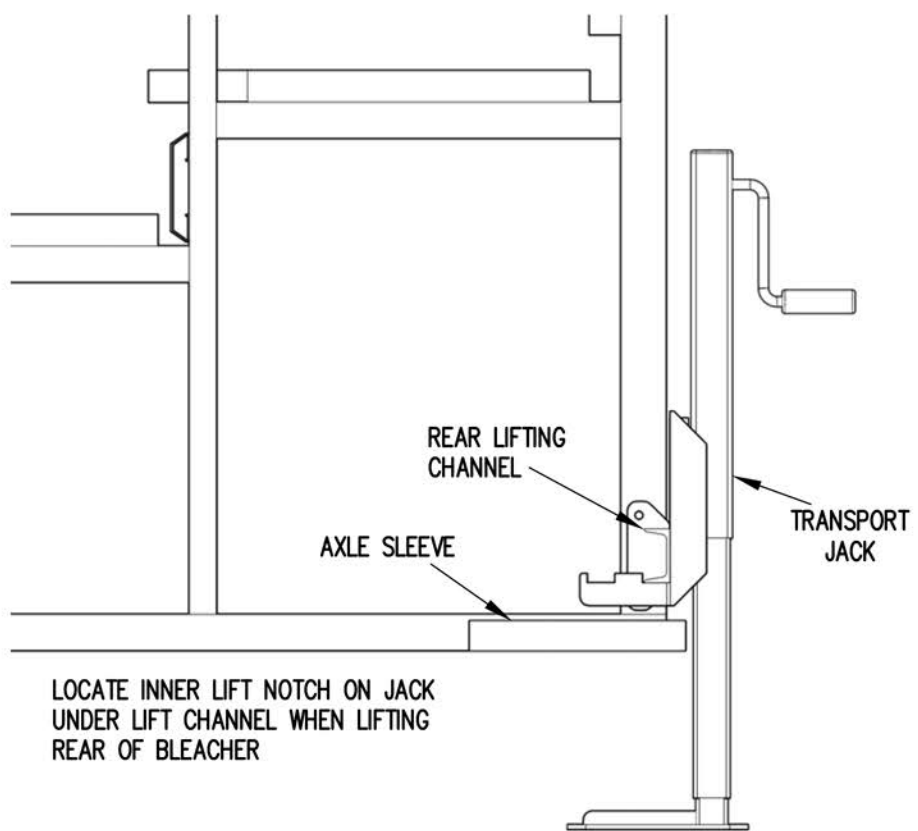


FRONT LIFTING CHANNEL

AXLE SLEEVE

TRANSPORT JACK

LOCATE OUTER LIFT NOTCH ON JACK UNDER LIFT CHANNEL WHEN LIFTING FRONT OF BLEACHER

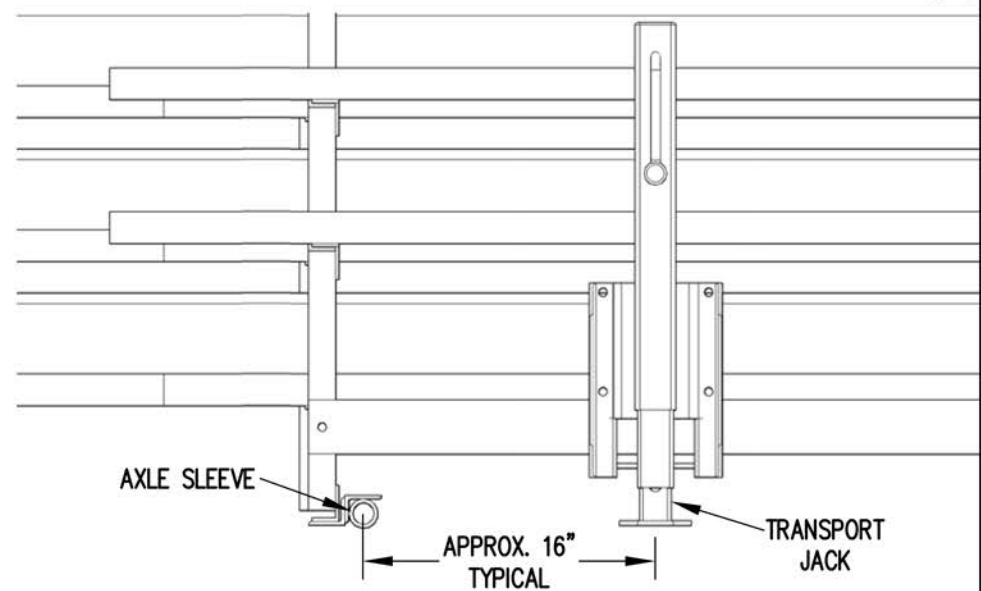


REAR LIFTING CHANNEL

AXLE SLEEVE

TRANSPORT JACK

LOCATE INNER LIFT NOTCH ON JACK UNDER LIFT CHANNEL WHEN LIFTING REAR OF BLEACHER



AXLE SLEEVE

APPROX. 16" TYPICAL

TRANSPORT JACK