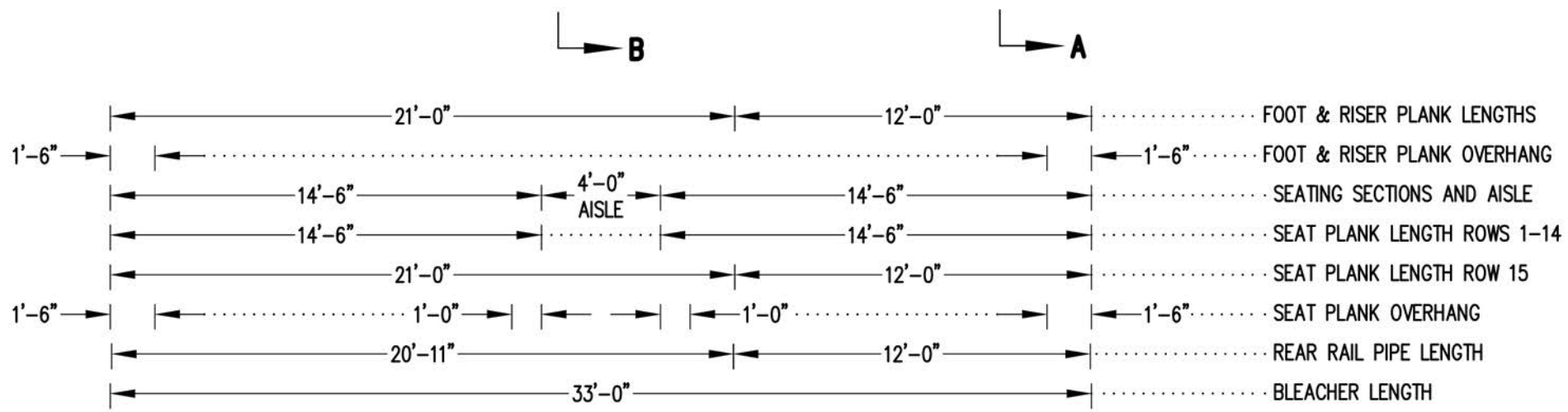
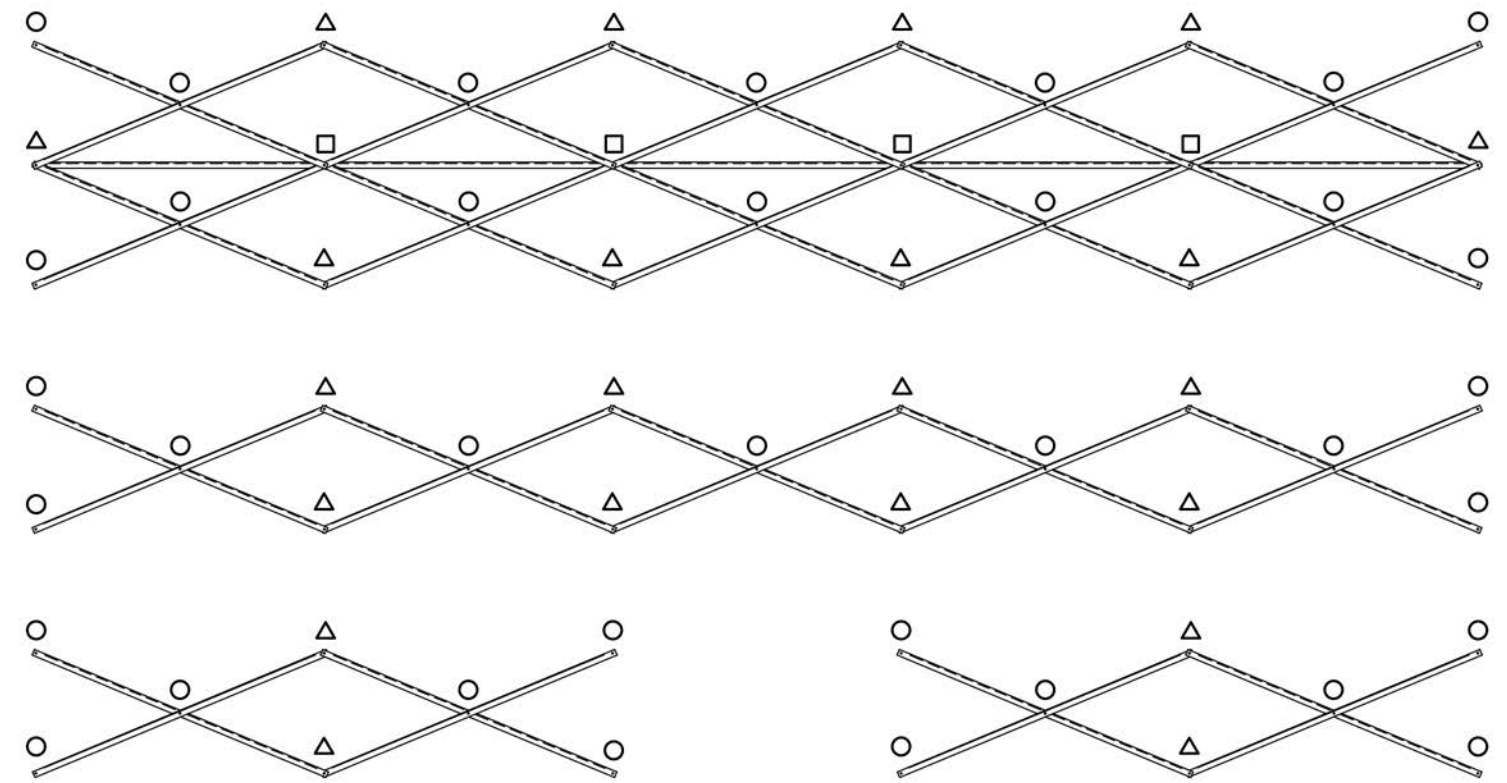
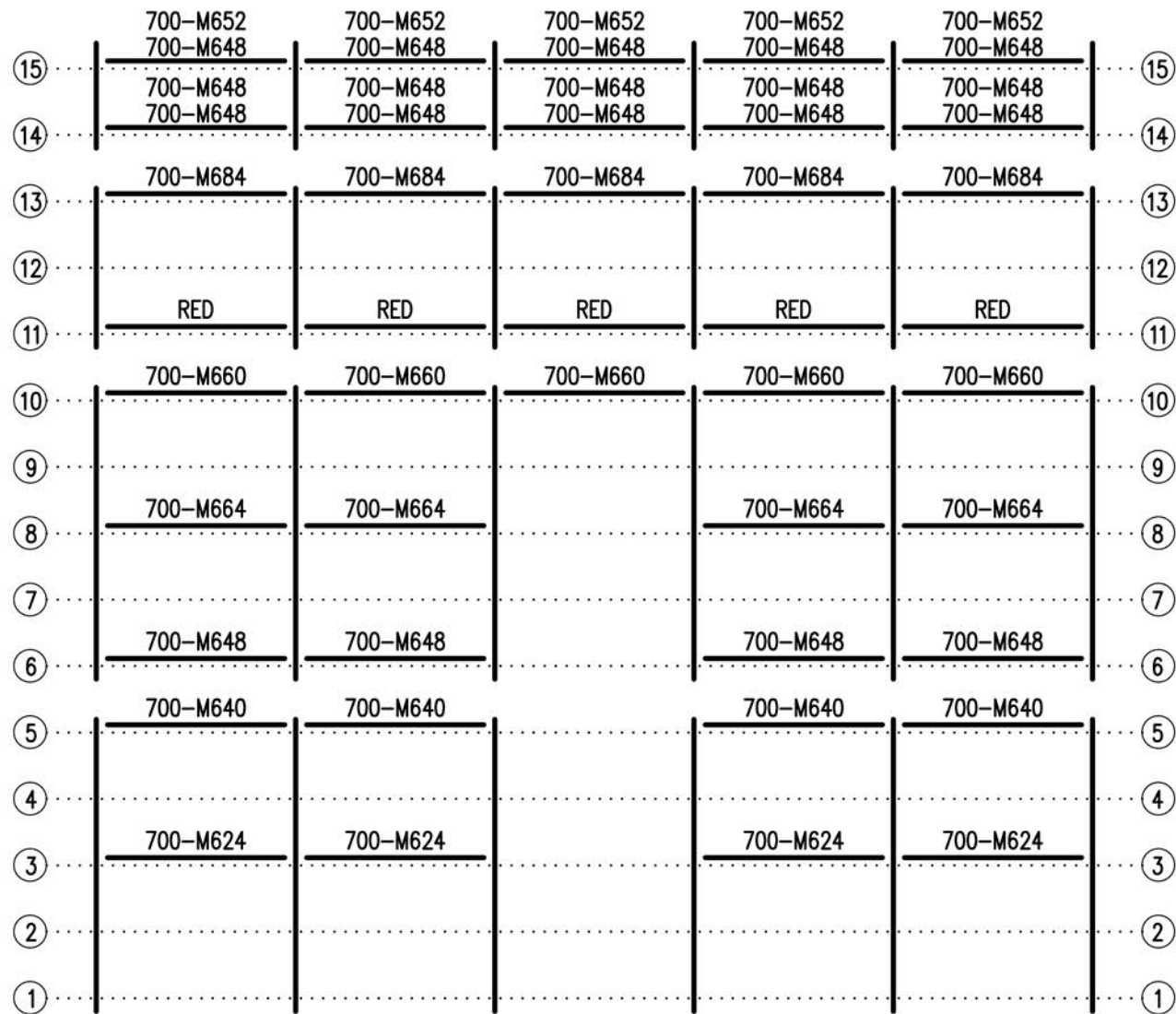


SEE REAR CORNER TIE  
ASSEMBLY DETAIL  
SEE DWG. 584-E1990



**SEATING PLAN**  
 $3/16" = 1'-0"$   
 274 NET SEATS @ 18" PER SEAT



**X-BRACE DETAIL**

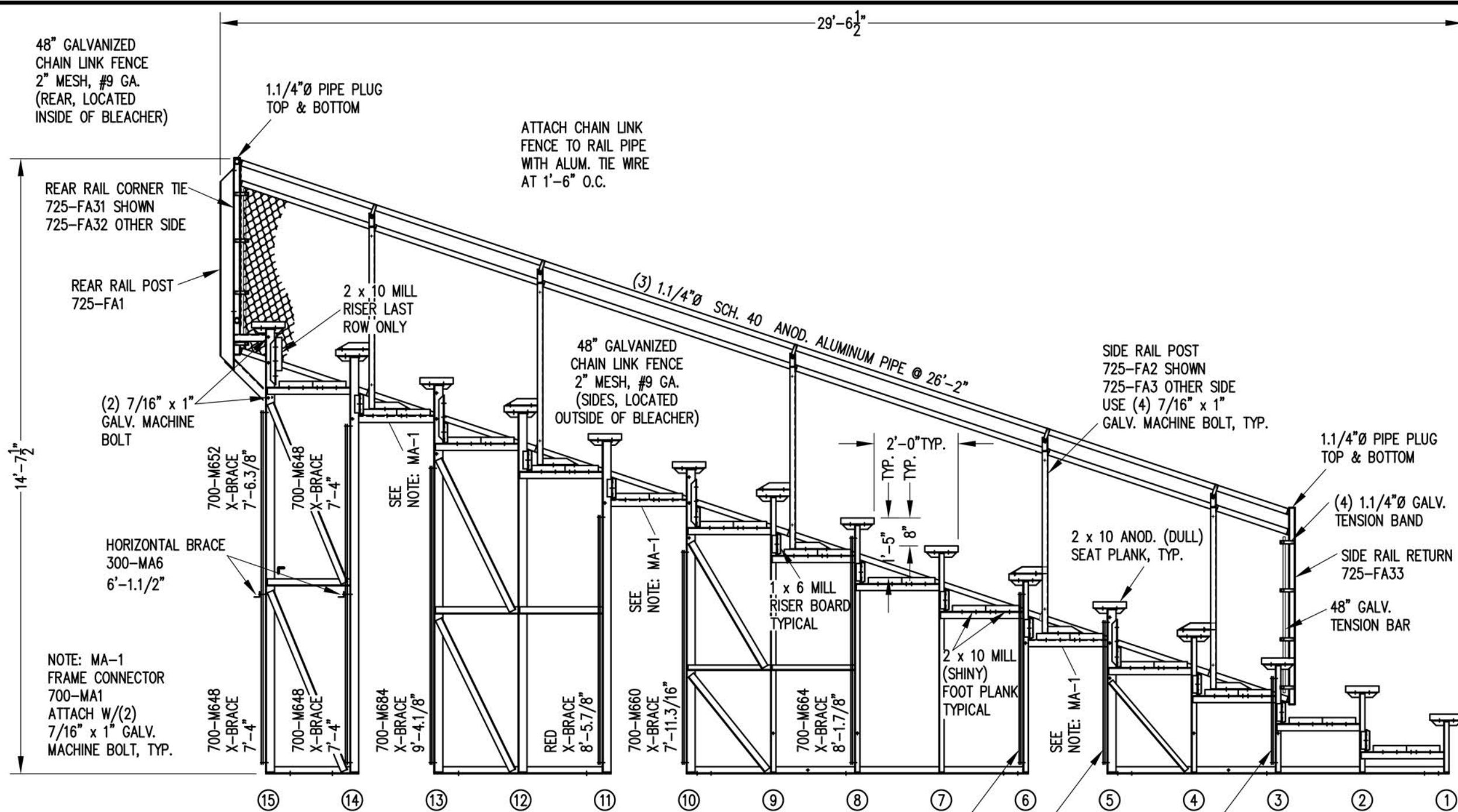
N.T.S.

- 7/16" X 1" GALV. MACH. BOLT
- △ 7/16" X 1.1/2" GALV. MACH. BOLT
- 7/16" X 3" GALV. MACH. BOLT



**FRAMING PLAN**

3/16" = 1'-0"



48" GALVANIZED  
CHAIN LINK FENCE  
2" MESH, #9 GA.  
(REAR, LOCATED  
INSIDE OF BLEACHER)

1.1/4"Ø PIPE PLUG  
TOP & BOTTOM

ATTACH CHAIN LINK  
FENCE TO RAIL PIPE  
WITH ALUM. TIE WIRE  
AT 1'-6" O.C.

REAR RAIL CORNER TIE  
725-FA31 SHOWN  
725-FA32 OTHER SIDE

REAR RAIL POST  
725-FA1

2 x 10 MILL  
RISER LAST  
ROW ONLY

48" GALVANIZED  
CHAIN LINK FENCE  
2" MESH, #9 GA.  
(SIDES, LOCATED  
OUTSIDE OF BLEACHER)

SIDE RAIL POST  
725-FA2 SHOWN  
725-FA3 OTHER SIDE  
USE (4) 7/16" x 1"  
GALV. MACHINE BOLT, TYP.

(2) 7/16" x 1"  
GALV. MACHINE  
BOLT

700-M652  
X-BRACE  
7'-6.3/8"

700-M648  
X-BRACE  
7'-4"

SEE  
NOTE: MA-1

(3) 1.1/4"Ø SCH. 40 ANOD. ALUMINUM PIPE @ 26'-2"

14'-7 1/2"

2'-0" TYP.  
TYP.  
TYP.

1.1/4"Ø PIPE PLUG  
TOP & BOTTOM

(4) 1.1/4"Ø GALV.  
TENSION BAND

HORIZONTAL BRACE  
300-MA6  
6'-1.1/2"

700-M648  
X-BRACE  
7'-4"

700-M648  
X-BRACE  
7'-4"

700-M684  
X-BRACE  
9'-4.1/8"

RED  
X-BRACE  
8'-5.7/8"

700-M660  
X-BRACE  
7'-11.3/16"

700-M664  
X-BRACE  
8'-1.7/8"

700-M640  
X-BRACE  
6'-11.7/8"

700-M624  
X-BRACE  
6'-5.3/8"

2 x 10 ANOD. (DULL)  
SEAT PLANK, TYP.

SIDE RAIL RETURN  
725-FA33

48" GALV.  
TENSION BAR

NOTE: MA-1  
FRAME CONNECTOR  
700-MA1  
ATTACH W/(2)  
7/16" x 1" GALV.  
MACHINE BOLT, TYP.

15

14

13

12

11

10

9

8

7

6

5

4

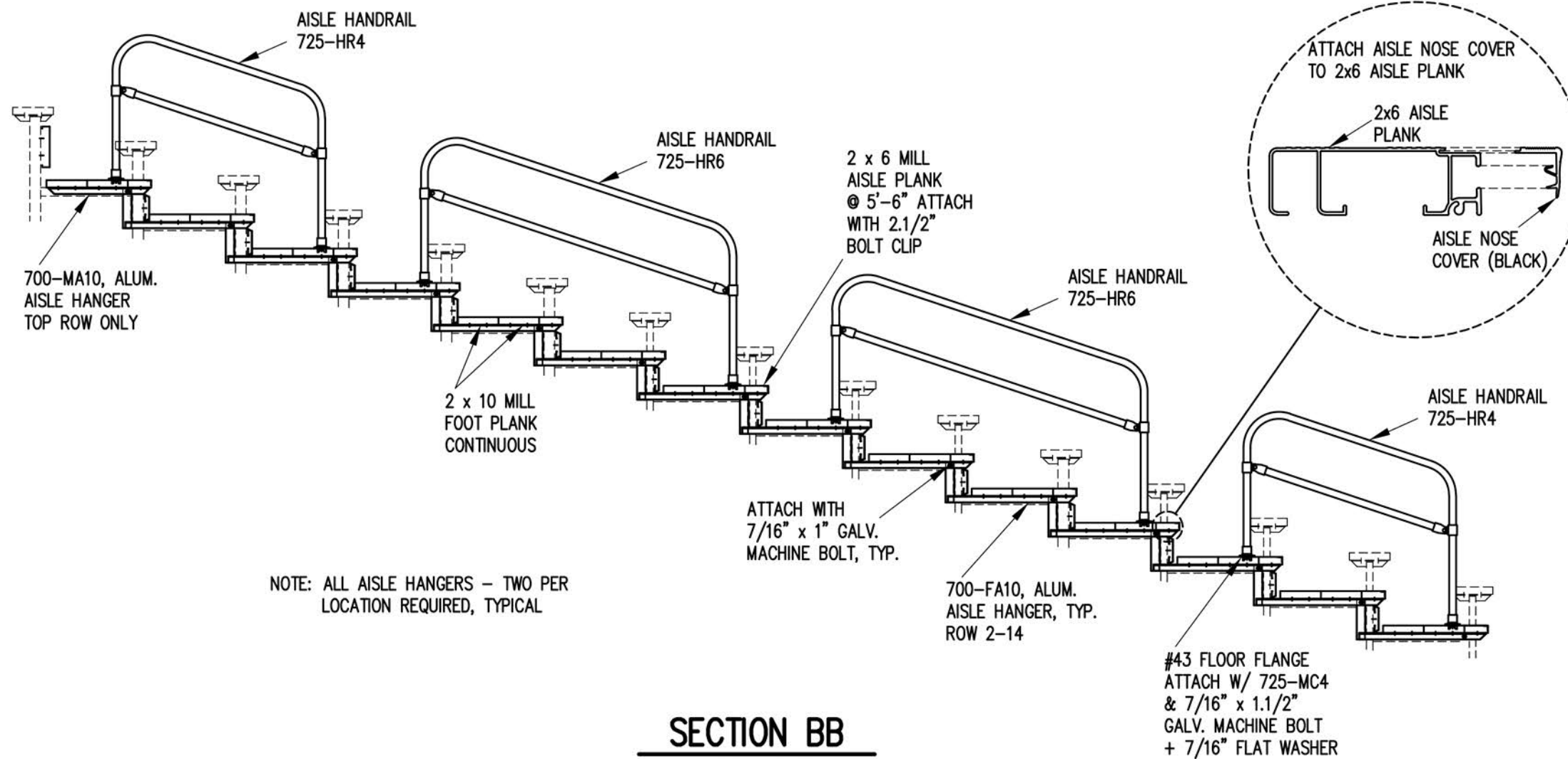
3

2

1

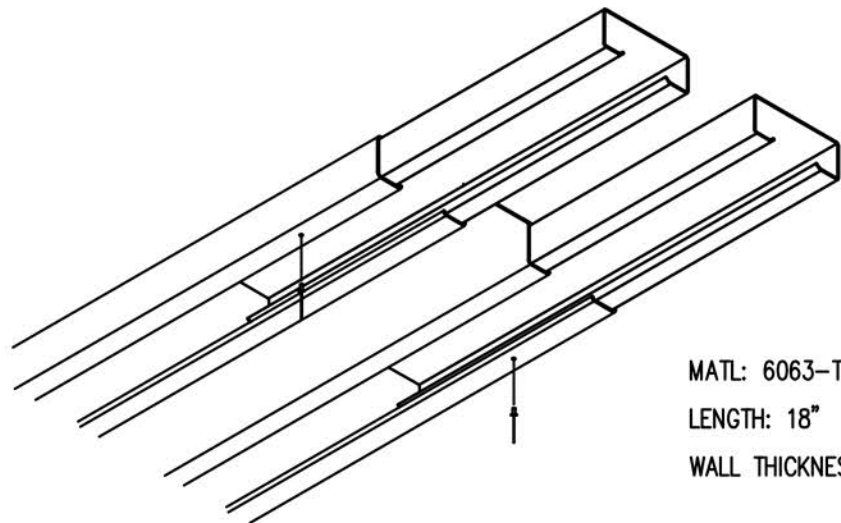
**SECTION AA**

3/8" = 1'-0"



**SECTION BB**

3/8" = 1'-0"



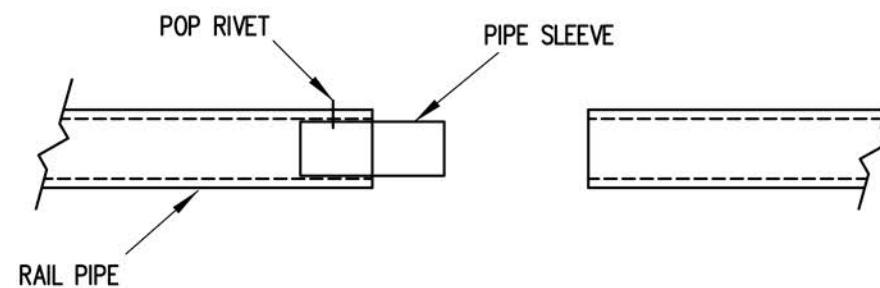
MATL: 6063-T6 ALUMN.  
 LENGTH: 18"  
 WALL THICKNESS: .062"

- 1) INSERT SLEEVES APPROXIMATELY HALFWAY INTO THE PLANK WITH THE ENDS STAGGERED ABOUT 1/2". FASTEN SLEEVE WITH (1) ALUMINUM POP RIVET.
- 2) SLIDE THE END OF THE ADJOINING PLANK OVER THE SLEEVES UNTIL THE TWO PLANKS ARE SNUG.

NOTE: SLEEVES SHOULD BE ATTACHED ON ONLY ONE END TO ALLOW FOR EXPANSION.

## PLANK SPLICE SLEEVE ASSEMBLY

(TYP. @ ALL PLANK SPLICES)

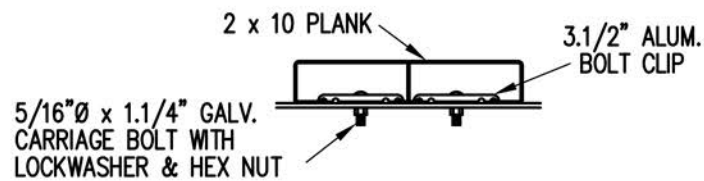


## PIPE SLEEVE ASSEMBLY

1.1/2" = 1' 0"

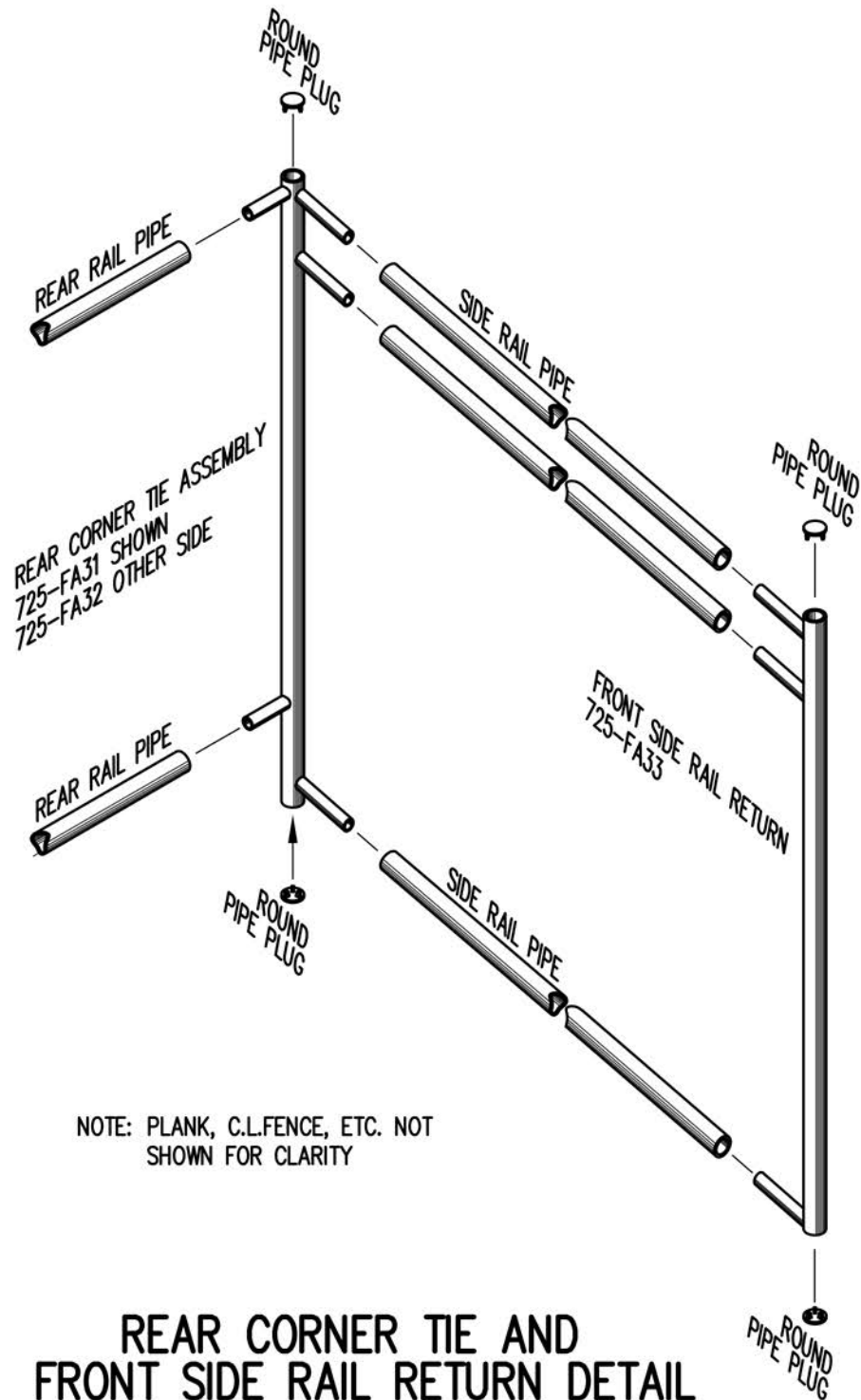
- 1) INSERT PIPE SLEEVE APPROXIMATELY HALFWAY INTO THE RAIL PIPE. FASTEN PIPE SLEEVE WITH (1) ALUMINUM POP RIVET (5/32" X 5/8")
- 2) SLIDE THE END OF THE ADJOINING RAILPIPE OVER THE PIPE SLEEVE UNTIL THE TWO RAILS ARE FLUSH.

NOTE: PIPE SLEEVES SHOULD BE ATTACHED ON ONLY ONE END TO ALLOW FOR EXPANSION.



### BOLT CLIP DETAIL

1.1/2" = 1'-0"



NOTE: PLANK, C.L.FENCE, ETC. NOT SHOWN FOR CLARITY

### REAR CORNER TIE AND FRONT SIDE RAIL RETURN DETAIL

3/4" = 1'-0"



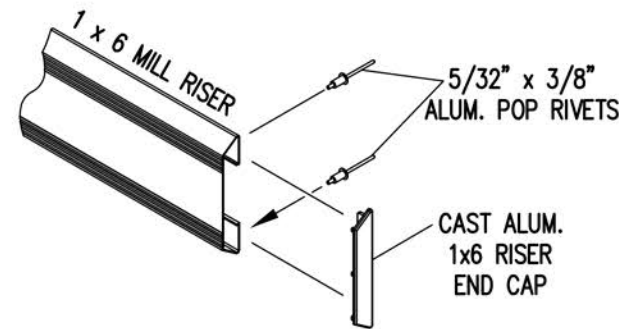
FIG.1

FIG.2

- 1) LOCATE THE CHANNEL END CAP AS SHOWN IN FIG. 1.
- 2) TAP END CAP INTO PLACE WITH RUBBER Mallet OR SOFT WOOD. FIG.2
- 3) DRILL 5/32" HOLES THROUGH THE BOTTOM FLANGE AND THE BOTTOM OUTSIDE PLANK FLANGES OF EACH PLANK. INSTALL 5/32" POP RIVETS.

### END CAP DETAIL

N.T.S.

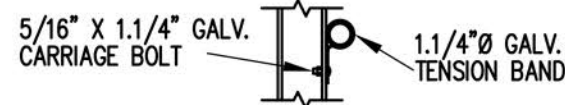


### 1 x 6 RISER END CAP

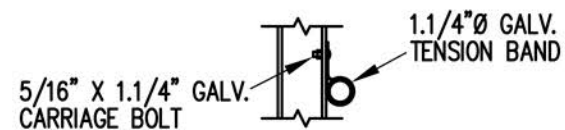
N.T.S.



### TOP RAIL

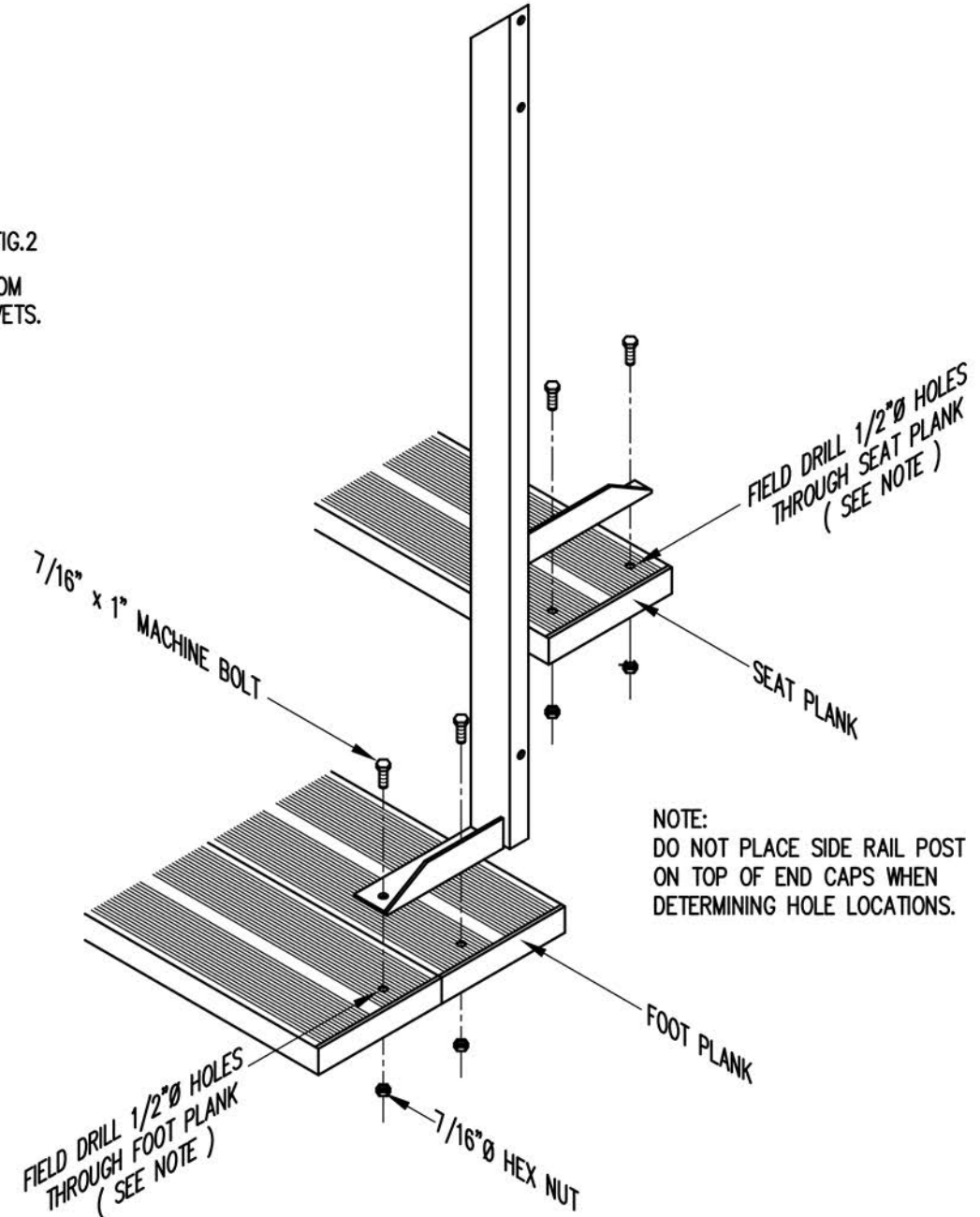


### MID RAIL



### LOWER RAIL

3/4" = 1'-0"



NOTE: DO NOT PLACE SIDE RAIL POST ON TOP OF END CAPS WHEN DETERMINING HOLE LOCATIONS.

### TYP. SIDE RAIL POST ATTACHMENT

1" = 1'-0"