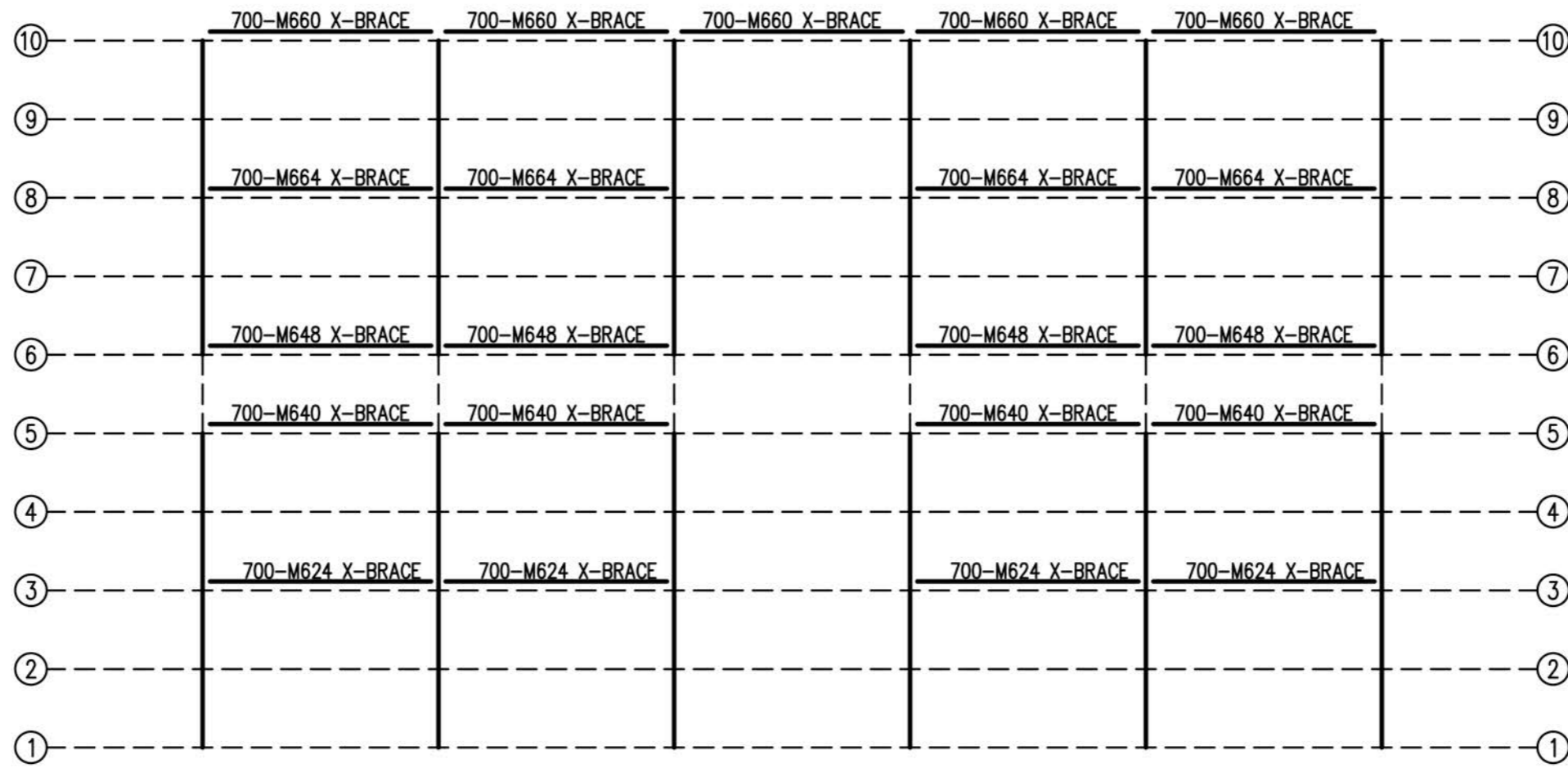
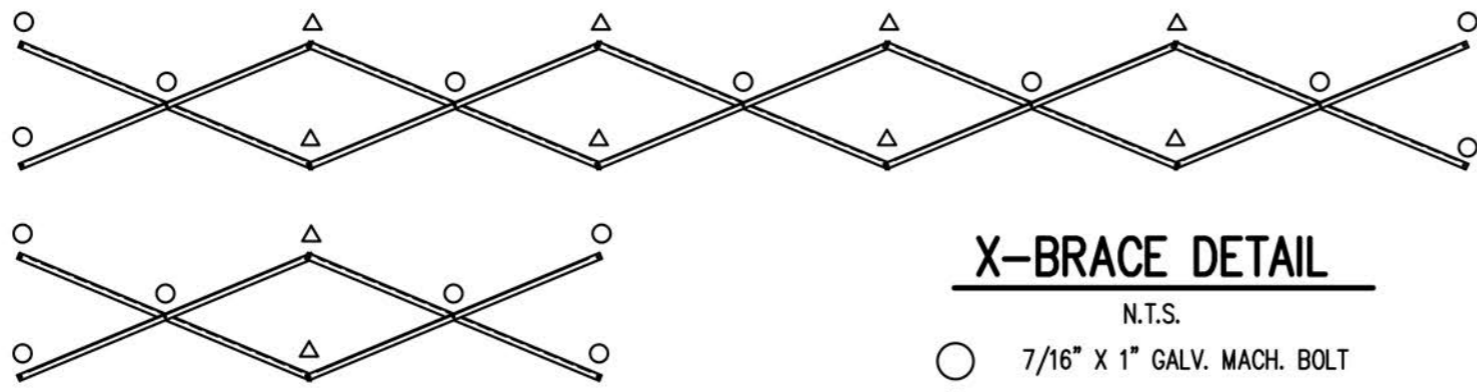


**SEATING PLAN**  
 1/4" = 1'-0"  
 184 NET SEAT @ 18" PER SEAT



**FRAMING PLAN**

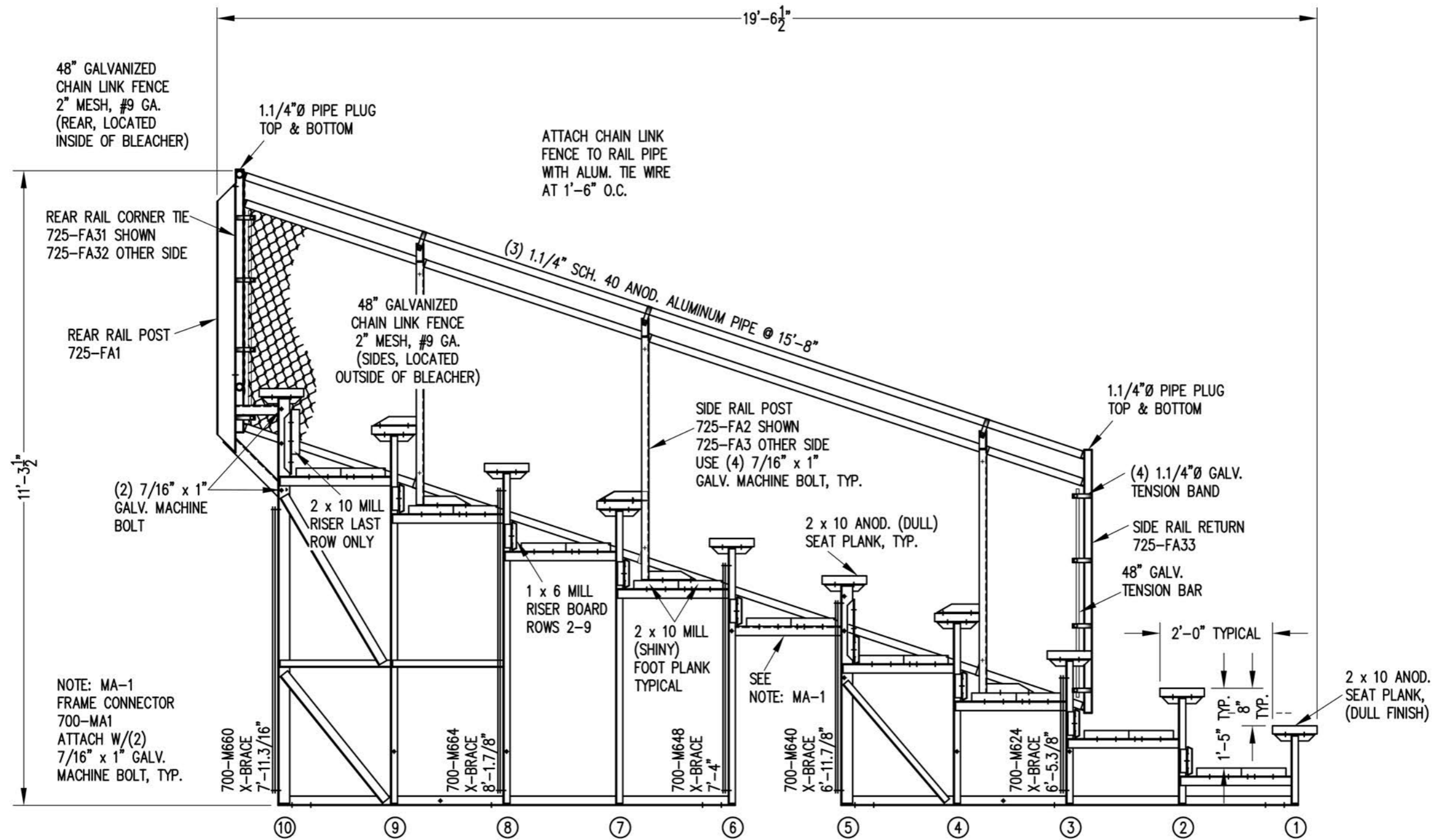
1/4" = 1'-0"



**X-BRACE DETAIL**

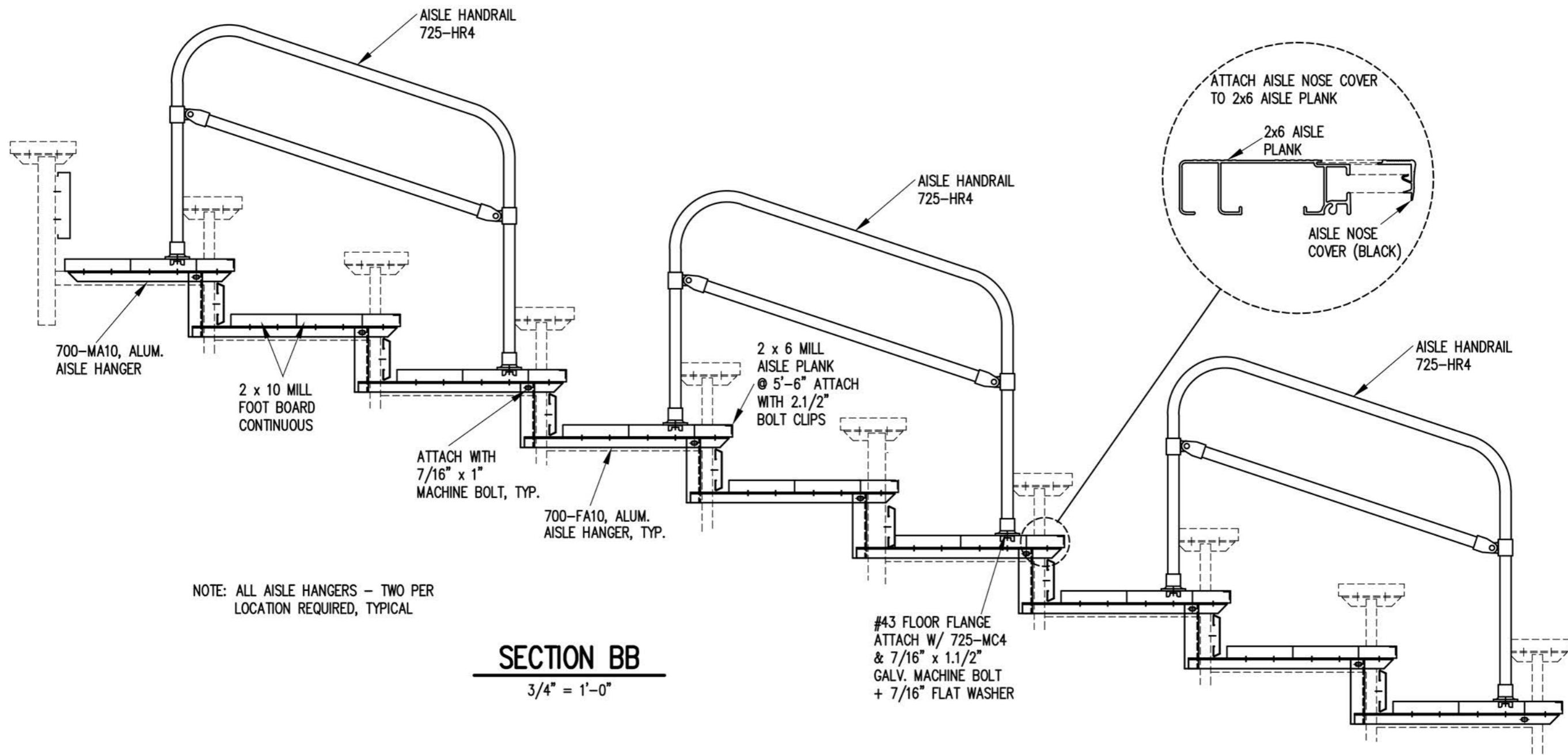
N.T.S.

- 7/16" X 1" GALV. MACH. BOLT
- △ 7/16" X 1.1/2" GALV. MACH. BOLT



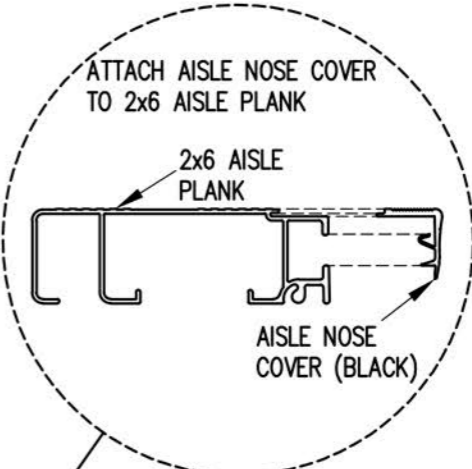
**SECTION AA**

1/2" = 1'-0"



AISLE HANDRAIL  
725-HR4

AISLE HANDRAIL  
725-HR4



AISLE HANDRAIL  
725-HR4

700-MA10, ALUM.  
AISLE HANGER

2 x 10 MILL  
FOOT BOARD  
CONTINUOUS

ATTACH WITH  
7/16" x 1"  
MACHINE BOLT, TYP.

700-FA10, ALUM.  
AISLE HANGER, TYP.

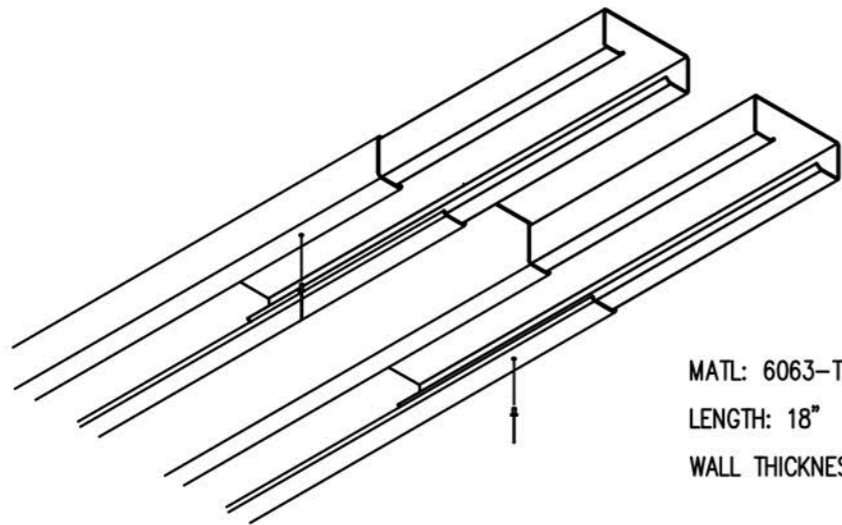
2 x 6 MILL  
AISLE PLANK  
@ 5'-6" ATTACH  
WITH 2.1/2"  
BOLT CLIPS

#43 FLOOR FLANGE  
ATTACH W/ 725-MC4  
& 7/16" x 1.1/2"  
GALV. MACHINE BOLT  
+ 7/16" FLAT WASHER

NOTE: ALL AISLE HANGERS - TWO PER  
LOCATION REQUIRED, TYPICAL

**SECTION BB**

3/4" = 1'-0"



MATL: 6063-T6 ALUMN.  
 LENGTH: 18"  
 WALL THICKNESS: .062"

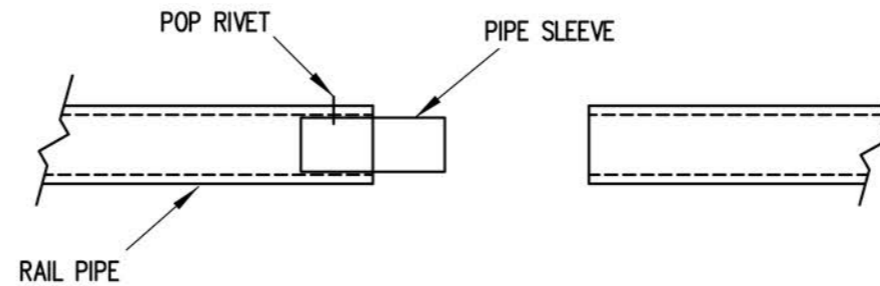
1) INSERT SLEEVES APPROXIMATELY HALFWAY INTO THE PLANK WITH THE ENDS STAGGERED ABOUT 1/2". FASTEN SLEEVE WITH (1) ALUMINUM POP RIVET.

2) SLIDE THE END OF THE ADJOINING PLANK OVER THE SLEEVES UNTIL THE TWO PLANKS ARE SNUG.

NOTE: SLEEVES SHOULD BE ATTACHED ON ONLY ONE END TO ALLOW FOR EXPANSION.

## PLANK SPLICE SLEEVE ASSEMBLY

(TYP. @ ALL PLANK SPLICES)

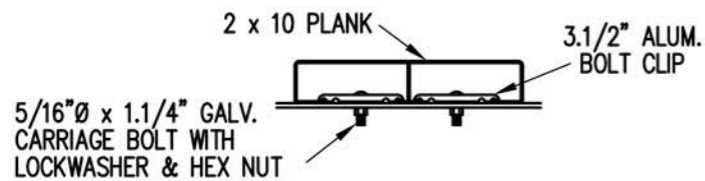


## PIPE SLEEVE ASSEMBLY

1 1/2" = 1' 0"

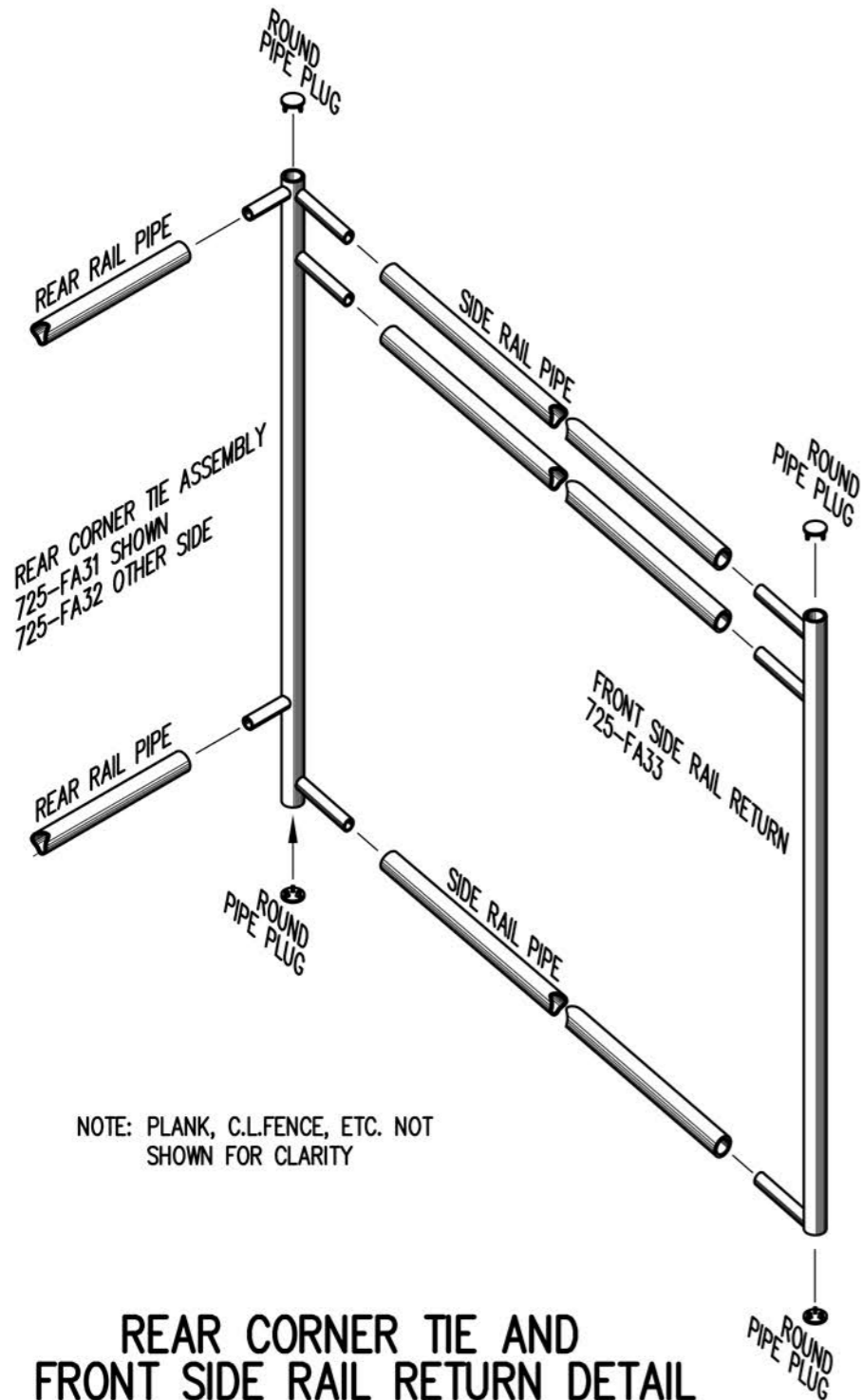
- 1) INSERT PIPE SLEEVE APPROXIMATELY HALFWAY INTO THE RAIL PIPE. FASTEN PIPE SLEEVE WITH (1) ALUMINUM POP RIVET (5/32" X 5/8")
- 2) SLIDE THE END OF THE ADJOINING RAILPIPE OVER THE PIPE SLEEVE UNTIL THE TWO RAILS ARE FLUSH.

NOTE: PIPE SLEEVES SHOULD BE ATTACHED ON ONLY ONE END TO ALLOW FOR EXPANSION.



### BOLT CLIP DETAIL

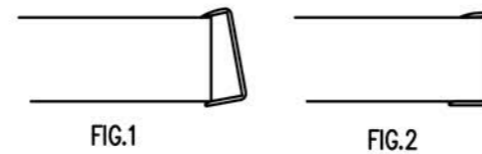
1.1/2" = 1'-0"



NOTE: PLANK, C.L.FENCE, ETC. NOT SHOWN FOR CLARITY

### REAR CORNER TIE AND FRONT SIDE RAIL RETURN DETAIL

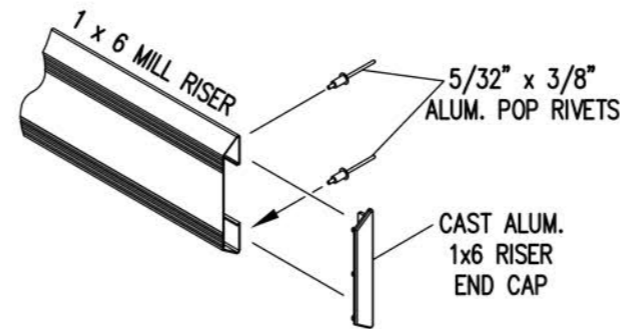
3/4" = 1'-0"



- 1) LOCATE THE CHANNEL END CAP AS SHOWN IN FIG. 1.
- 2) TAP END CAP INTO PLACE WITH RUBBER Mallet OR SOFT WOOD. FIG.2
- 3) DRILL 5/32" HOLES THROUGH THE BOTTOM FLANGE AND THE BOTTOM OUTSIDE PLANK FLANGES OF EACH PLANK. INSTALL 5/32" POP RIVETS.

### END CAP DETAIL

N.T.S.

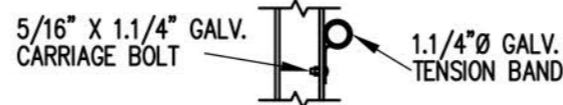


### 1 x 6 RISER END CAP

N.T.S.



### TOP RAIL

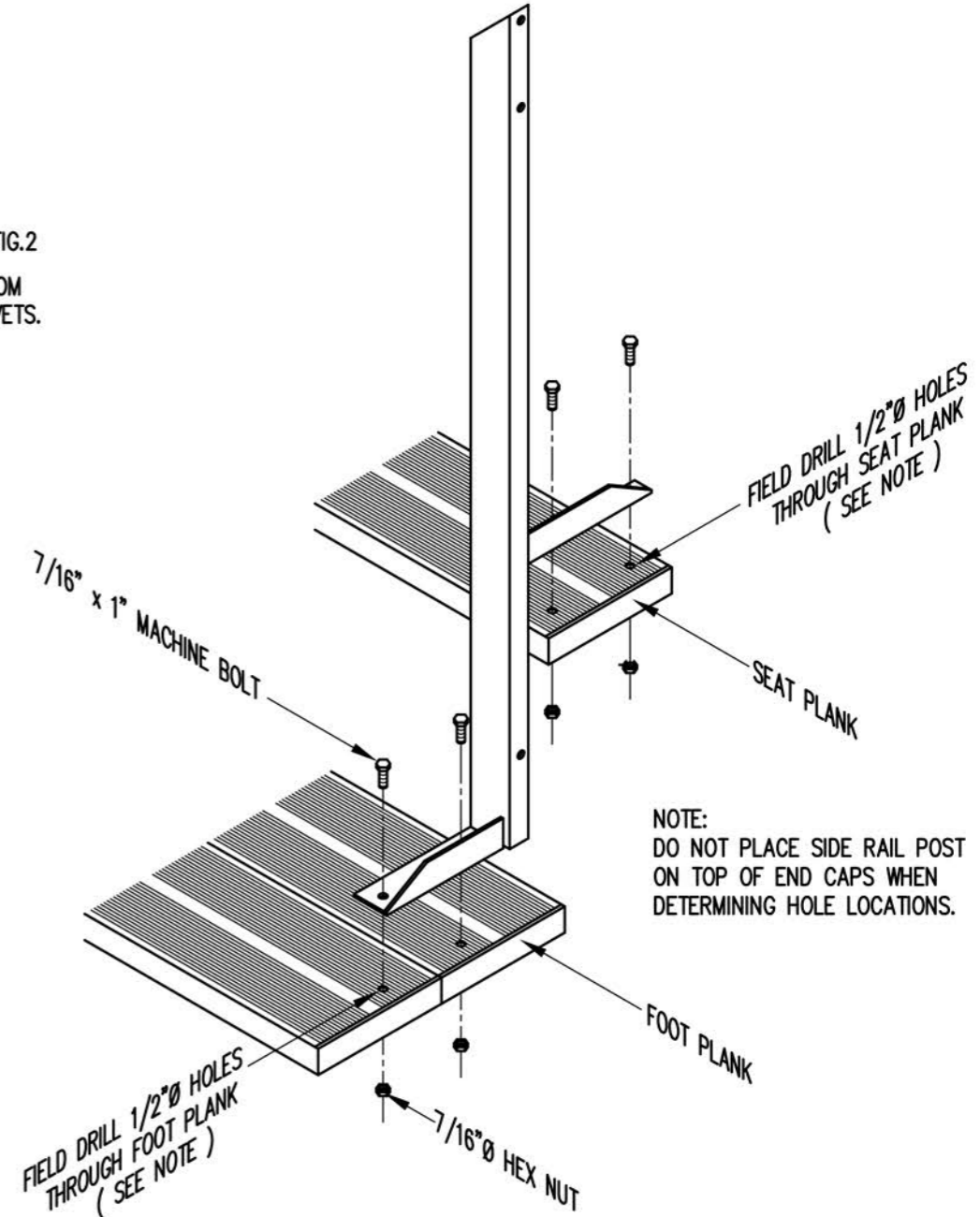


### MID RAIL



### LOWER RAIL

3/4" = 1'-0"



NOTE: DO NOT PLACE SIDE RAIL POST ON TOP OF END CAPS WHEN DETERMINING HOLE LOCATIONS.

### TYP. SIDE RAIL POST ATTACHMENT

1" = 1'-0"