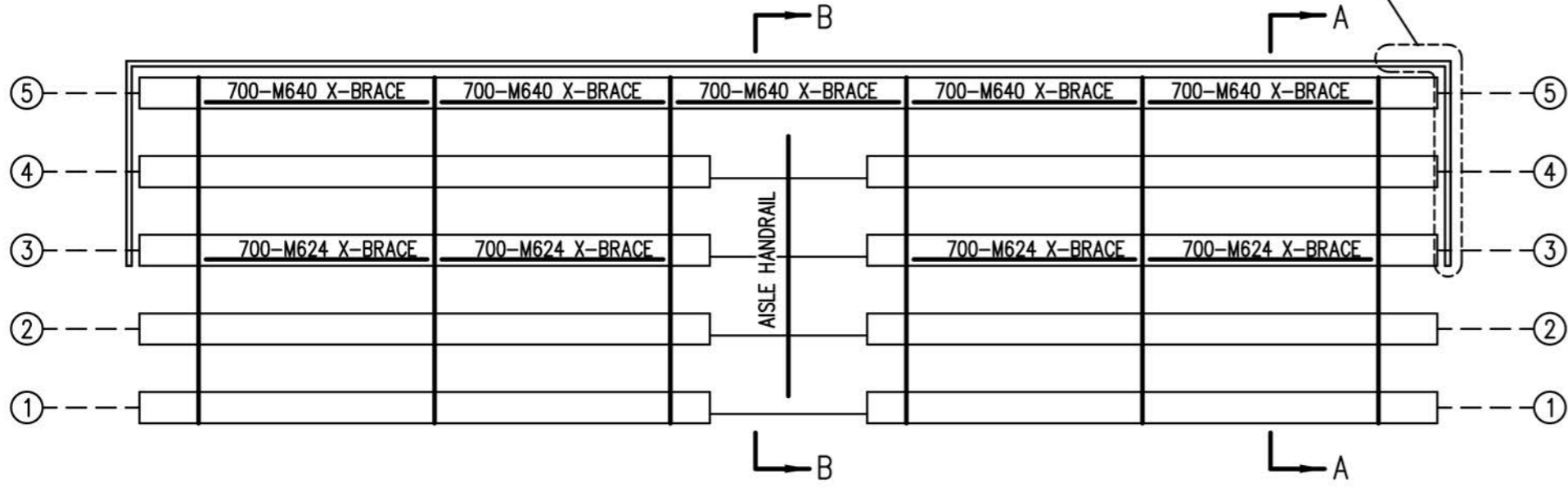


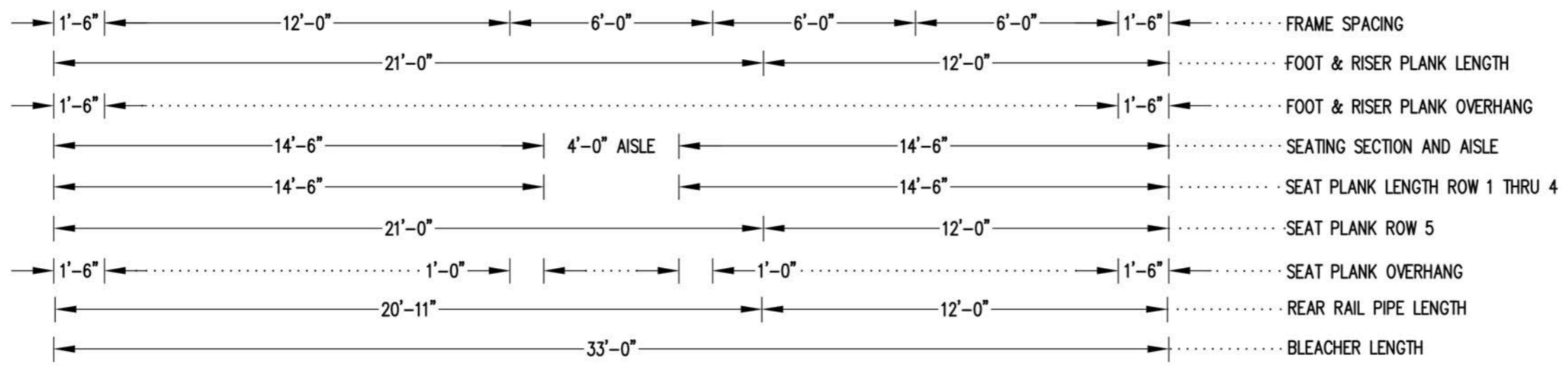
SEE REAR CORNER TIE  
ASSEMBLY DETAIL  
SEE DWG. 584-E1990



**X-BRACE DETAIL**

N.T.S.

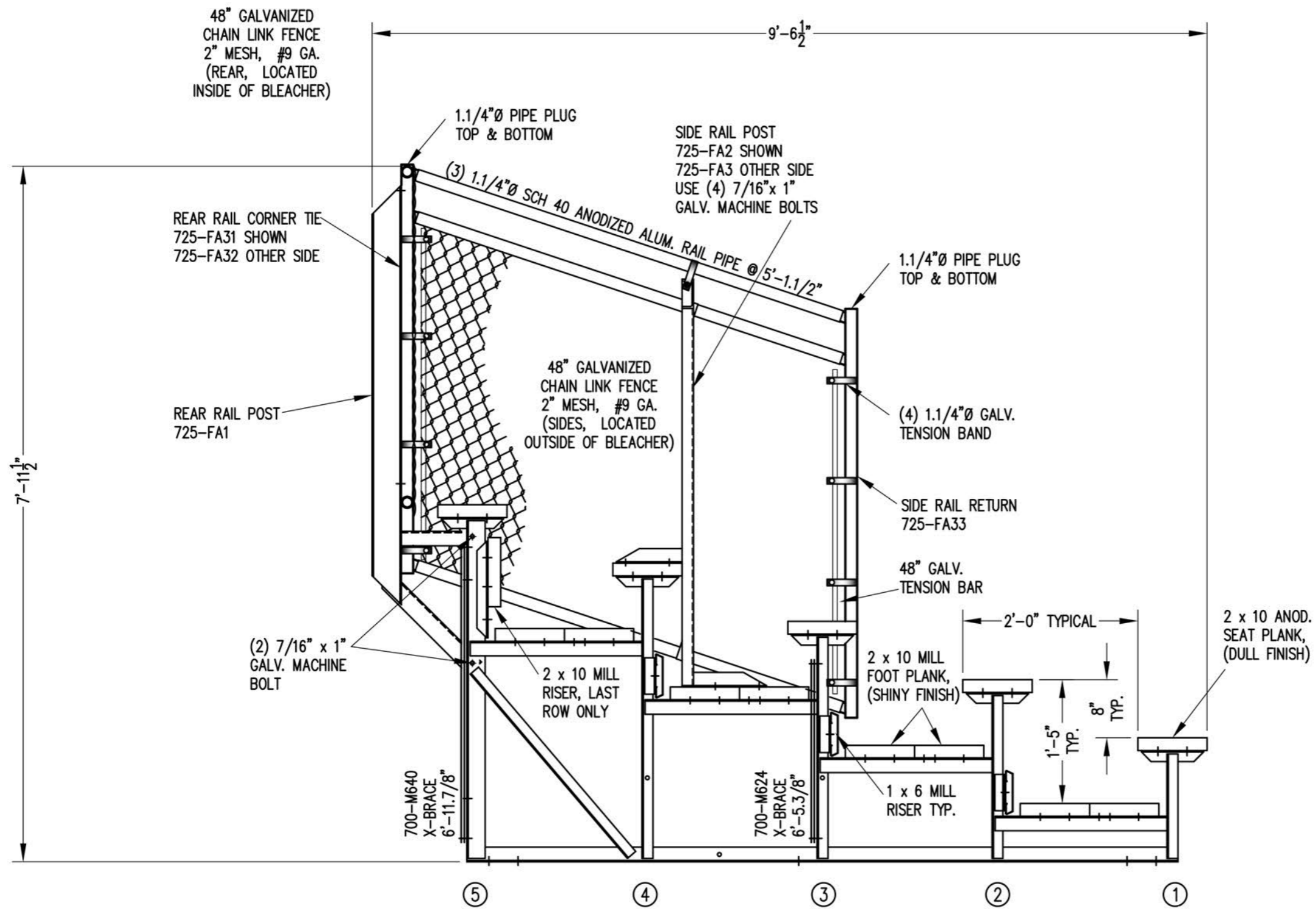
- 7/16" X 1" GALV. MACH. BOLT
- △ 7/16" X 1.1/2" GALV. MACH. BOLT



**SEATING & FRAMING PLAN**

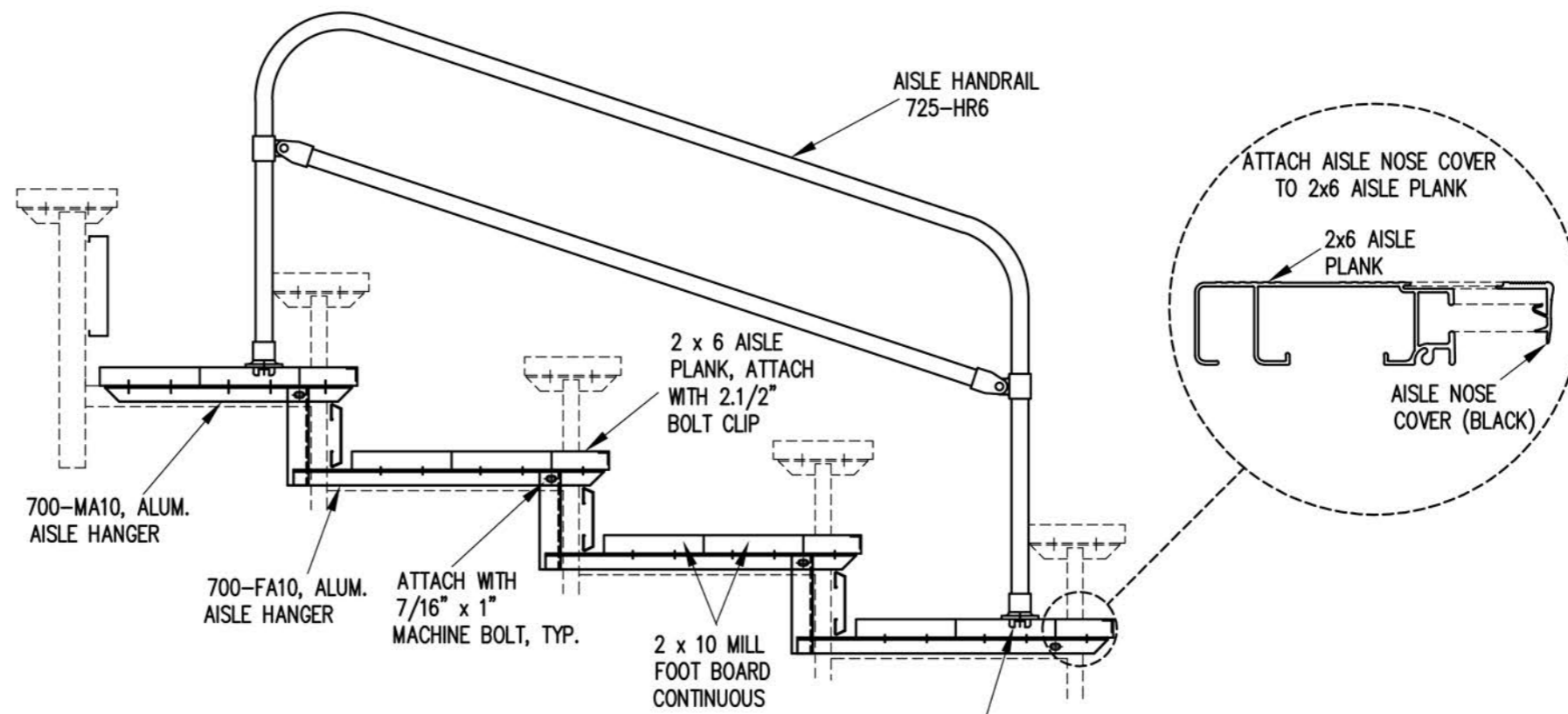
1/4" = 1'-0"

94 NET SEAT @ 18" PER SEAT



**SECTION AA**

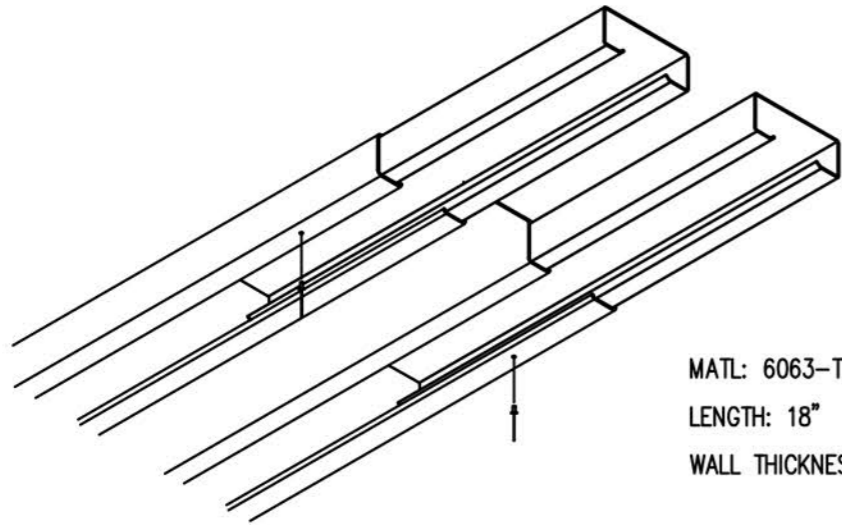
3/4" = 1'-0"



NOTE: ALL AISLE HANGERS - TWO PER  
LOCATION REQUIRED, TYPICAL

**SECTION BB**

3/4" = 1'-0"



MATL: 6063-T6 ALUMN.  
LENGTH: 18"  
WALL THICKNESS: .062"

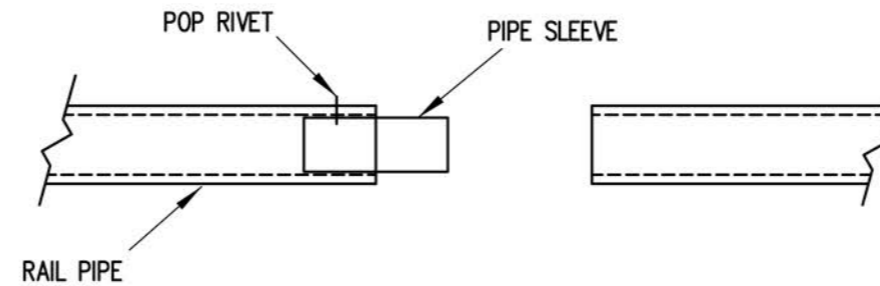
1) INSERT SLEEVES APPROXIMATELY HALFWAY INTO THE PLANK WITH THE ENDS STAGGERED ABOUT 1/2". FASTEN SLEEVE WITH (1) ALUMINUM POP RIVET.

2) SLIDE THE END OF THE ADJOINING PLANK OVER THE SLEEVES UNTIL THE TWO PLANKS ARE SNUG.

NOTE: SLEEVES SHOULD BE ATTACHED ON ONLY ONE END TO ALLOW FOR EXPANSION.

## PLANK SPLICE SLEEVE ASSEMBLY

(TYP. @ ALL PLANK SPLICES)

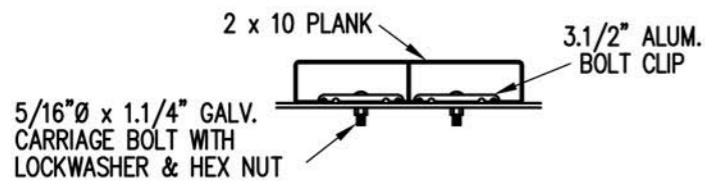


## PIPE SLEEVE ASSEMBLY

1.1/2" = 1' 0"

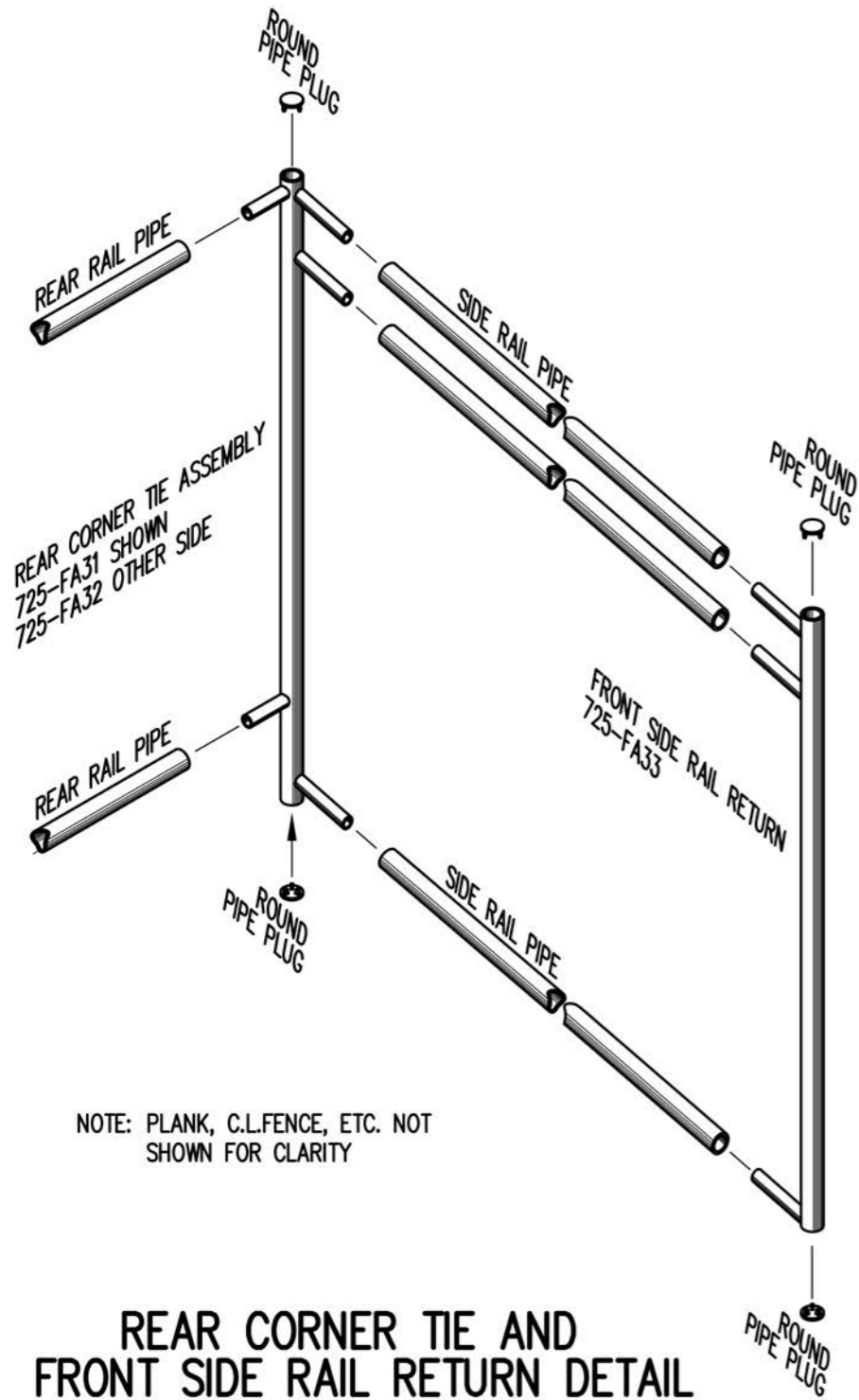
- 1) INSERT PIPE SLEEVE APPROXIMATELY HALFWAY INTO THE RAIL PIPE. FASTEN PIPE SLEEVE WITH (1) ALUMINUM POP RIVET (5/32" X 5/8")
- 2) SLIDE THE END OF THE ADJOINING RAILPIPE OVER THE PIPE SLEEVE UNTIL THE TWO RAILS ARE FLUSH.

NOTE: PIPE SLEEVES SHOULD BE ATTACHED ON ONLY ONE END TO ALLOW FOR EXPANSION.



### BOLT CLIP DETAIL

1.1/2" = 1'-0"



### REAR CORNER TIE AND FRONT SIDE RAIL RETURN DETAIL

3/4" = 1'-0"

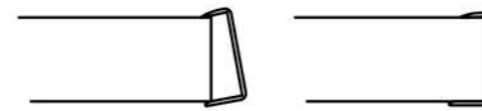


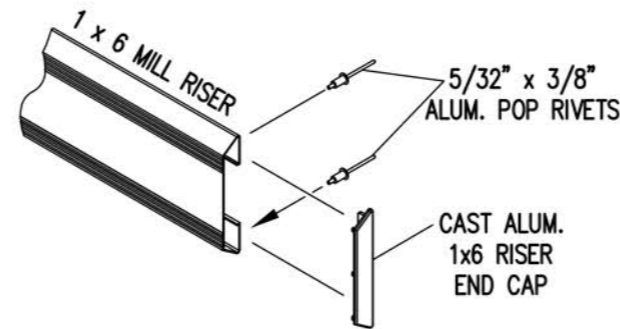
FIG.1

FIG.2

- 1) LOCATE THE CHANNEL END CAP AS SHOWN IN FIG. 1.
- 2) TAP END CAP INTO PLACE WITH RUBBER Mallet OR SOFT WOOD. FIG.2
- 3) DRILL 5/32" HOLES THROUGH THE BOTTOM FLANGE AND THE BOTTOM OUTSIDE PLANK FLANGES OF EACH PLANK. INSTALL 5/32" POP RIVETS.

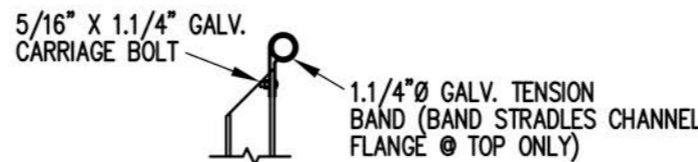
### END CAP DETAIL

N.T.S.

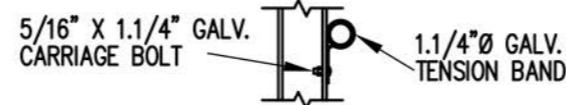


### 1 x 6 RISER END CAP

N.T.S.



### TOP RAIL

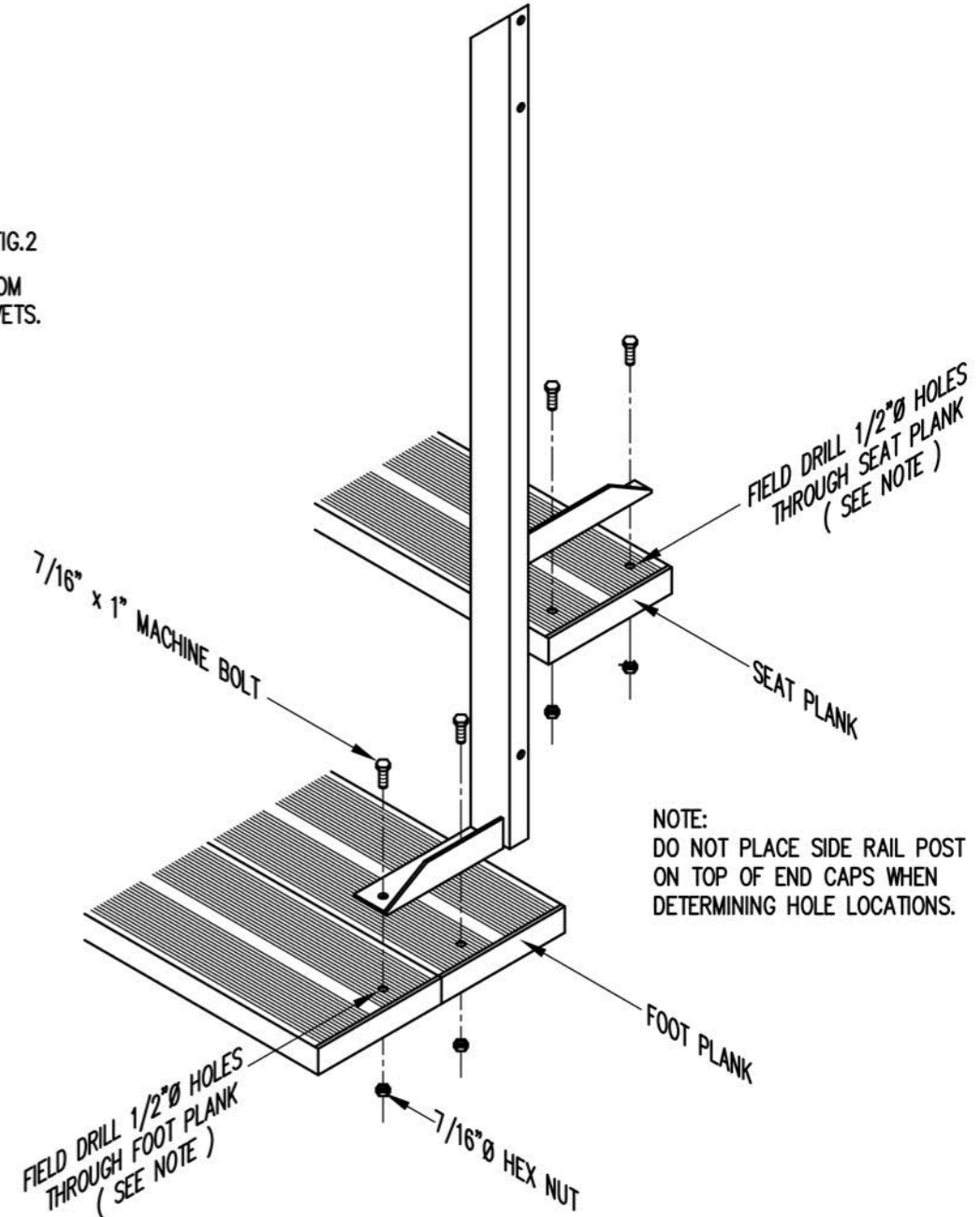


### MID RAIL



### LOWER RAIL

3/4" = 1'-0"



### TYP. SIDE RAIL POST ATTACHMENT

1" = 1'-0"

NOTE: PLANK, C.L.FENCE, ETC. NOT SHOWN FOR CLARITY

NOTE: DO NOT PLACE SIDE RAIL POST ON TOP OF END CAPS WHEN DETERMINING HOLE LOCATIONS.

FIELD DRILL 1/2" Ø HOLES THROUGH FOOT PLANK (SEE NOTE)

FIELD DRILL 1/2" Ø HOLES THROUGH SEAT PLANK (SEE NOTE)