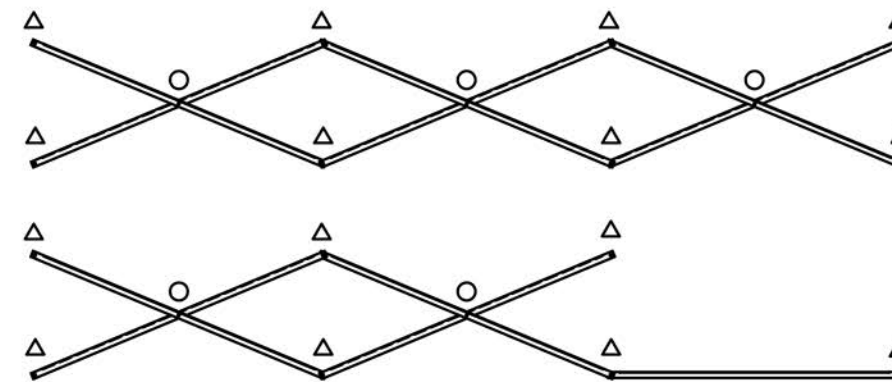
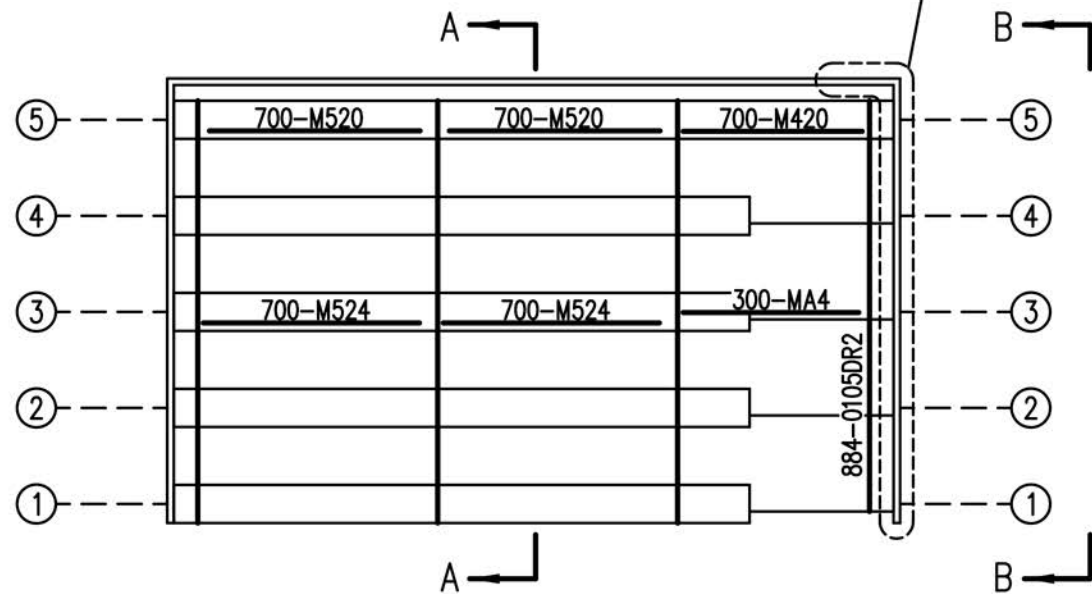


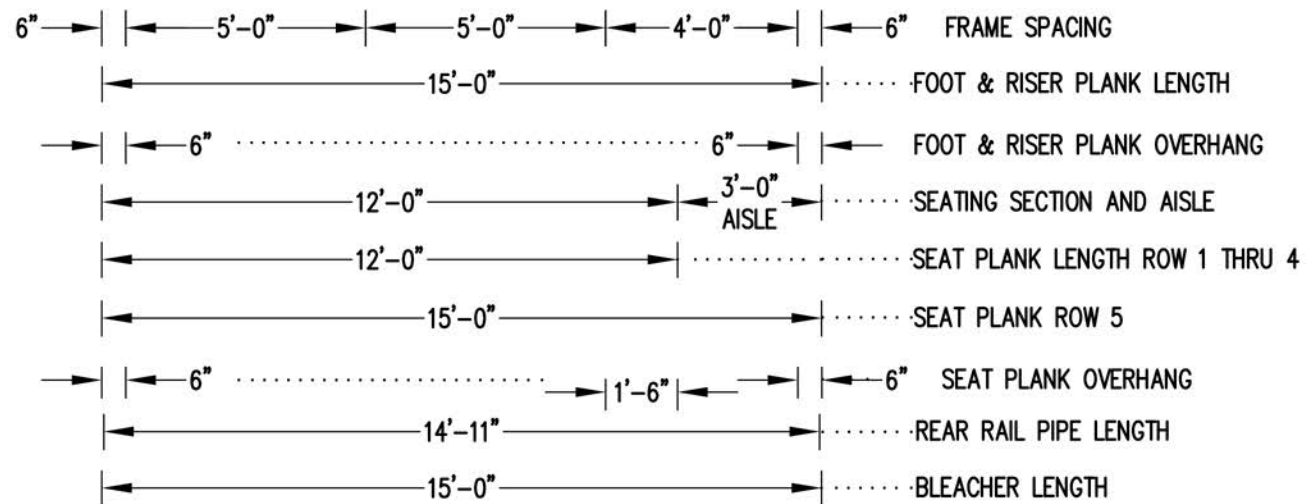
SEE REAR CORNER TIE
ASSEMBLY DETAIL
SEE DWG. 884-E2000



X-BRACE DETAIL

N.T.S.

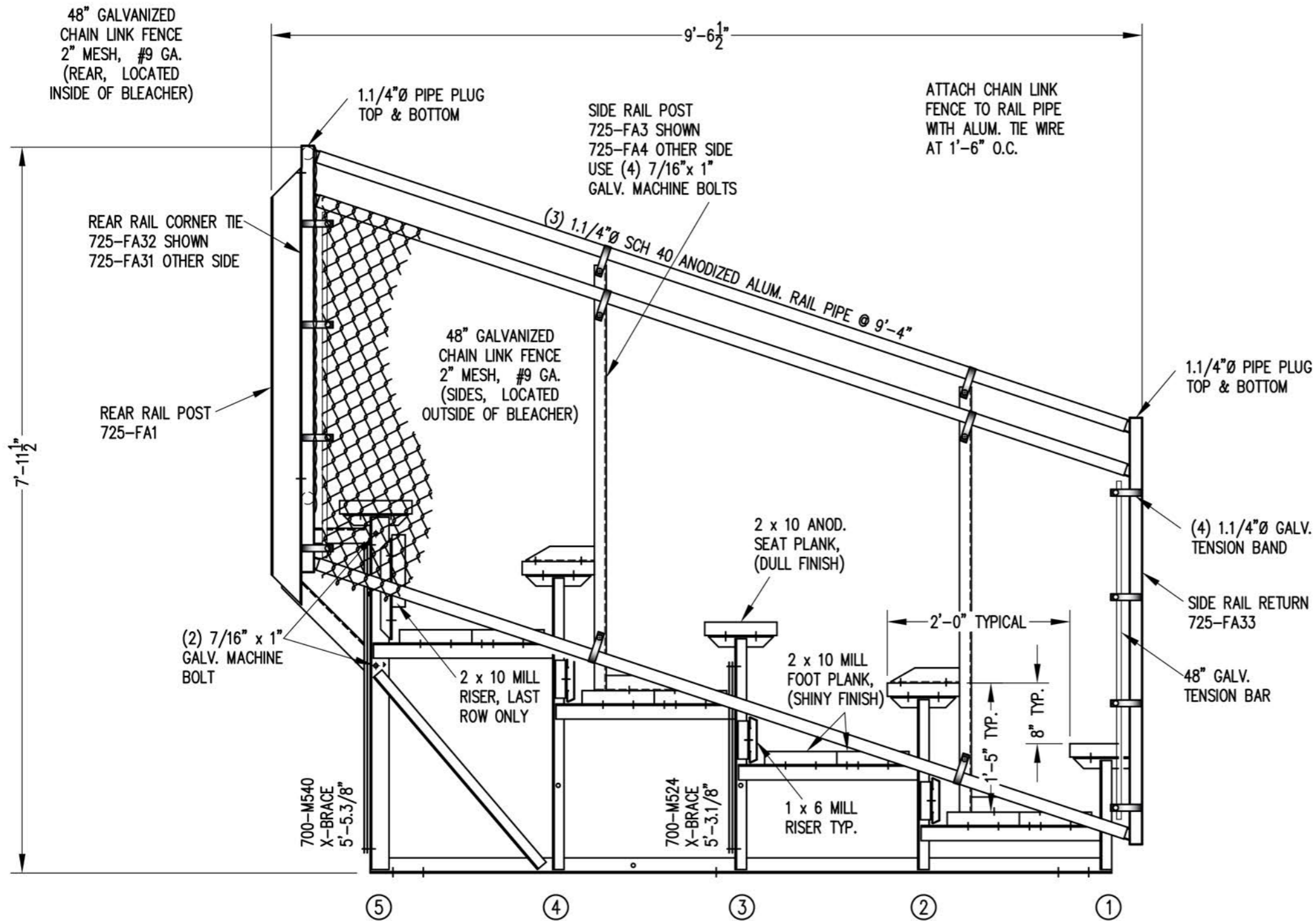
- | | | | |
|------------------------------|-----------------------------|------------------------------|-----------------------------|
| 2" TUBE COLUMN BOLT SCHEDULE | | 3" TUBE COLUMN BOLT SCHEDULE | |
| ○ | 7/16" X 1" GALV. MACH. BOLT | ○ | 7/16" X 1" GALV. MACH. BOLT |
| △ | 7/16" X 3" GALV. MACH. BOLT | △ | 7/16" X 4" GALV. MACH. BOLT |



SEATING & FRAMING PLAN

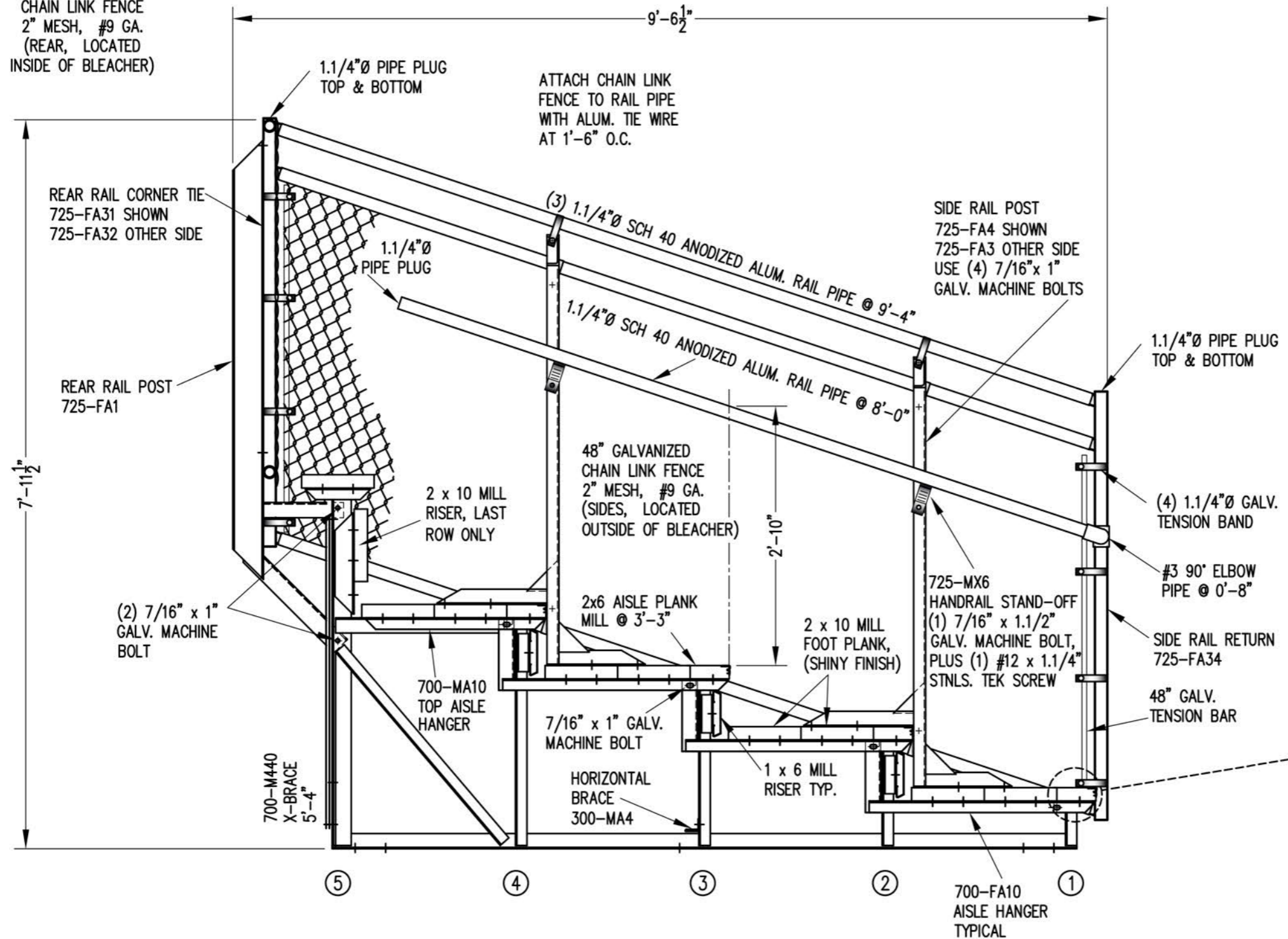
1/4" = 1'-0"

42 NET SEATS @ 18" PER SEAT



VIEW 'AA'
 3/4" = 1'-0"

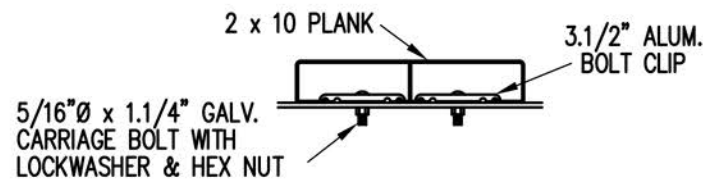
48" GALVANIZED
CHAIN LINK FENCE
2" MESH, #9 GA.
(REAR, LOCATED
INSIDE OF BLEACHER)



NOTE: ALL AISLE HANGERS - TWO PER
LOCATION REQUIRED, TYPICAL

SECTION BB

3/4" = 1'-0"



BOLT CLIP DETAIL

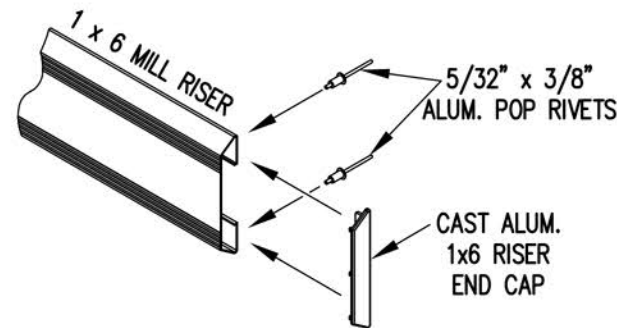
1.1/2" = 1'-0"



- 1) LOCATE THE CHANNEL END CAP AS SHOWN IN FIG. 1.
- 2) TAP END CAP INTO PLACE WITH RUBBER Mallet OR SOFT WOOD. FIG.2
- 3) DRILL 5/32" HOLES THROUGH THE BOTTOM FLANGE AND THE BOTTOM OUTSIDE PLANK FLANGES OF EACH PLANK. INSTALL 5/32" POP RIVETS.

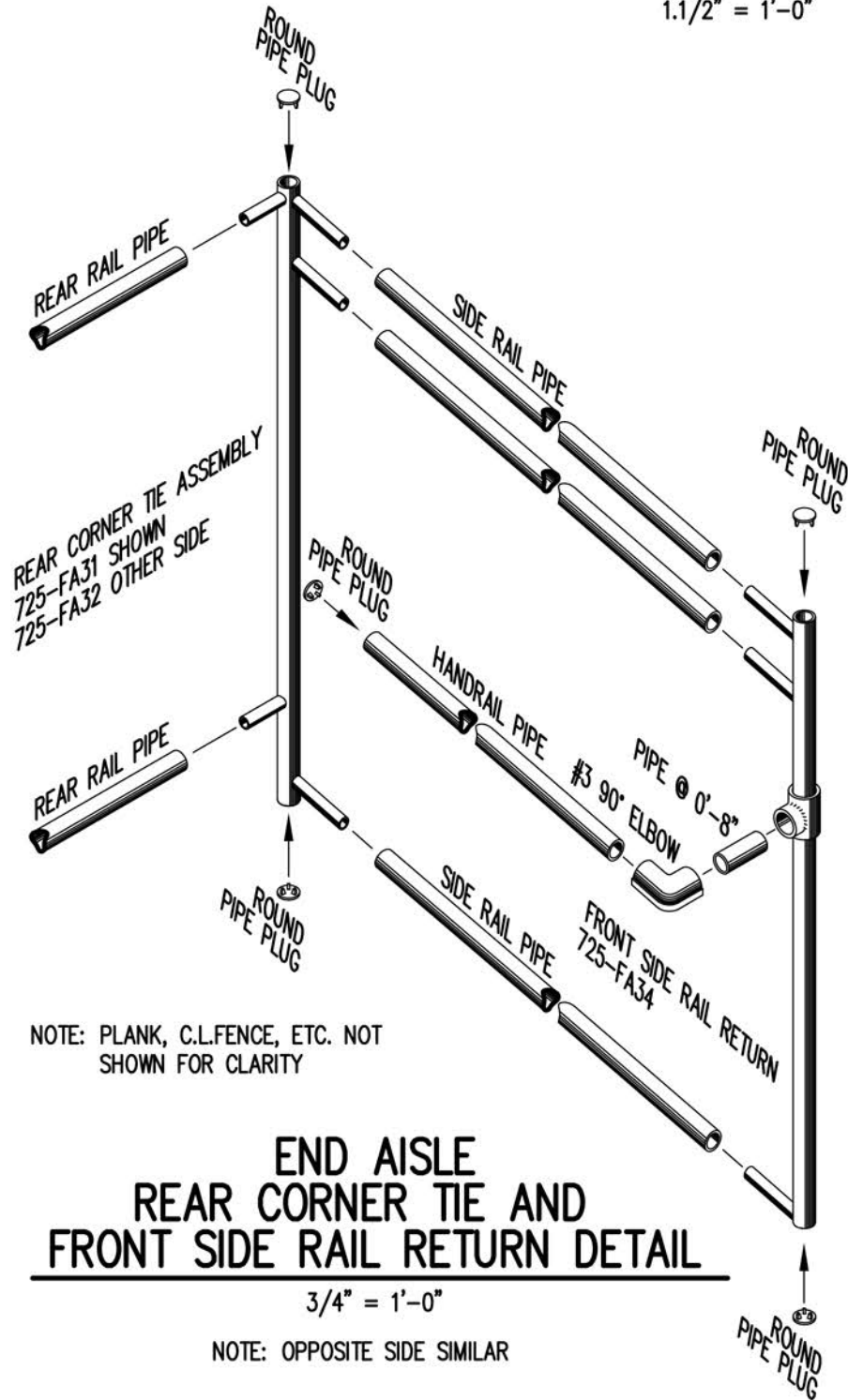
END CAP DETAIL

N.T.S.



1 x 6 RISER END CAP

N.T.S.

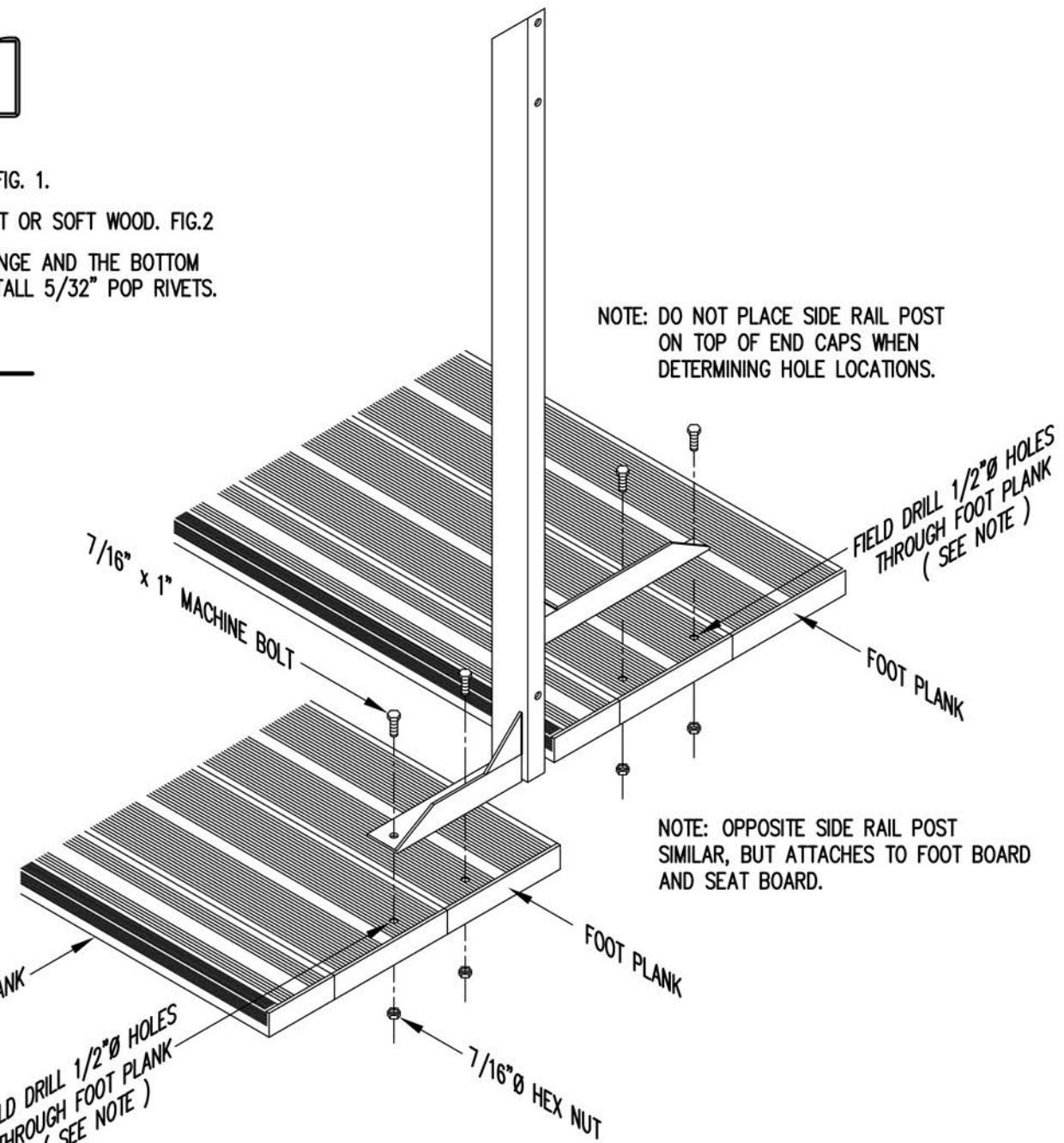


NOTE: PLANK, C.L.FENCE, ETC. NOT SHOWN FOR CLARITY

END AISLE REAR CORNER TIE AND FRONT SIDE RAIL RETURN DETAIL

3/4" = 1'-0"

NOTE: OPPOSITE SIDE SIMILAR



TYP. SIDE RAIL POST ATTACHMENT AT END AISLE

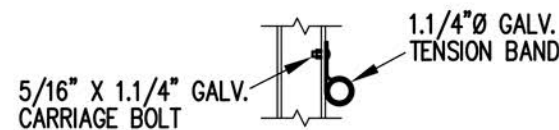
1" = 1'-0"



TOP RAIL



2ND RAIL



BOTTOM RAIL

RAIL PIPE ATTACHMENT