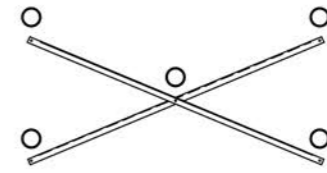


SEATING PLAN

$1/4" = 1'-0"$

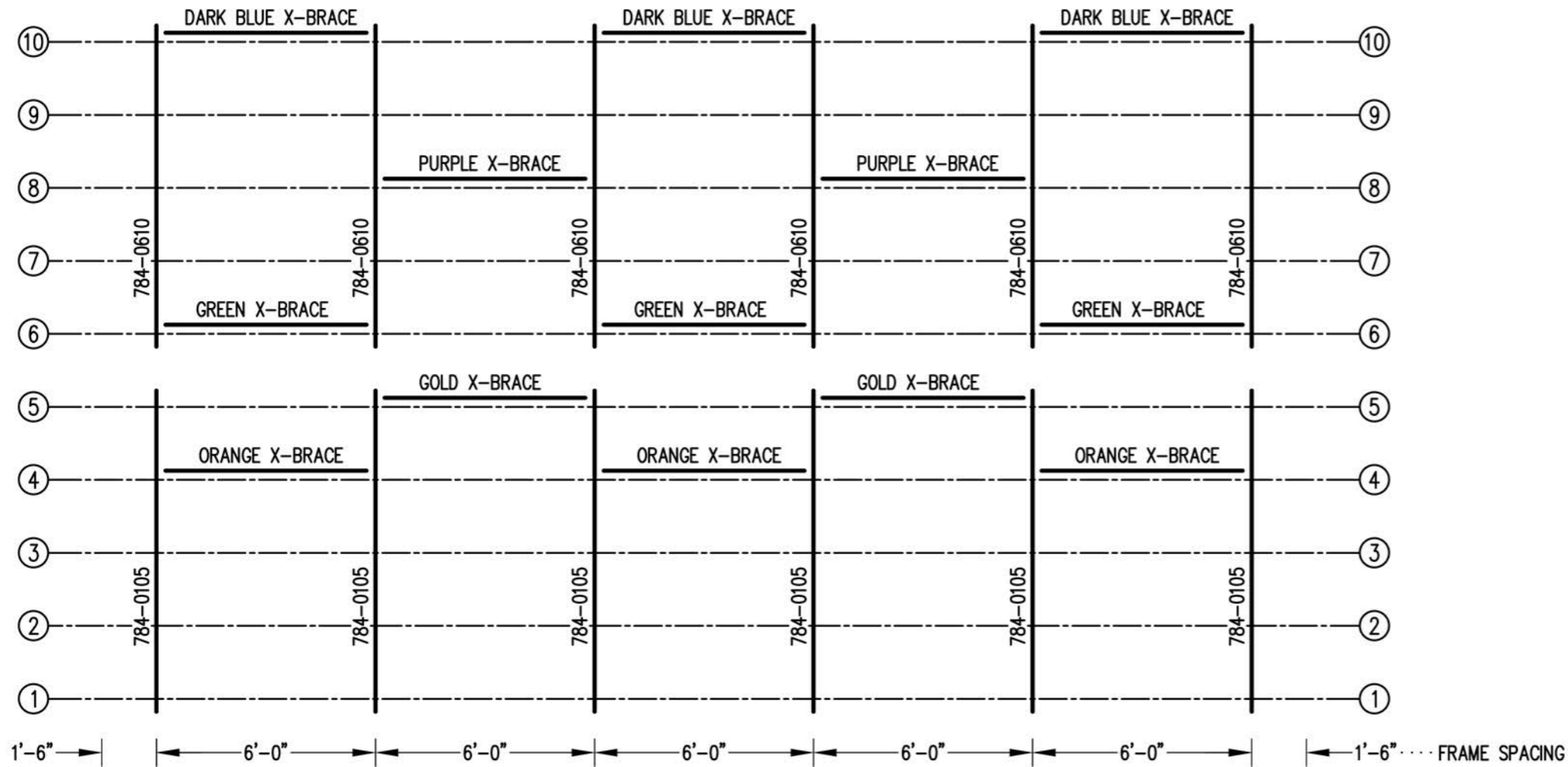
184 NET SEATS @ 18" PER SEAT



X-BRACE DETAIL

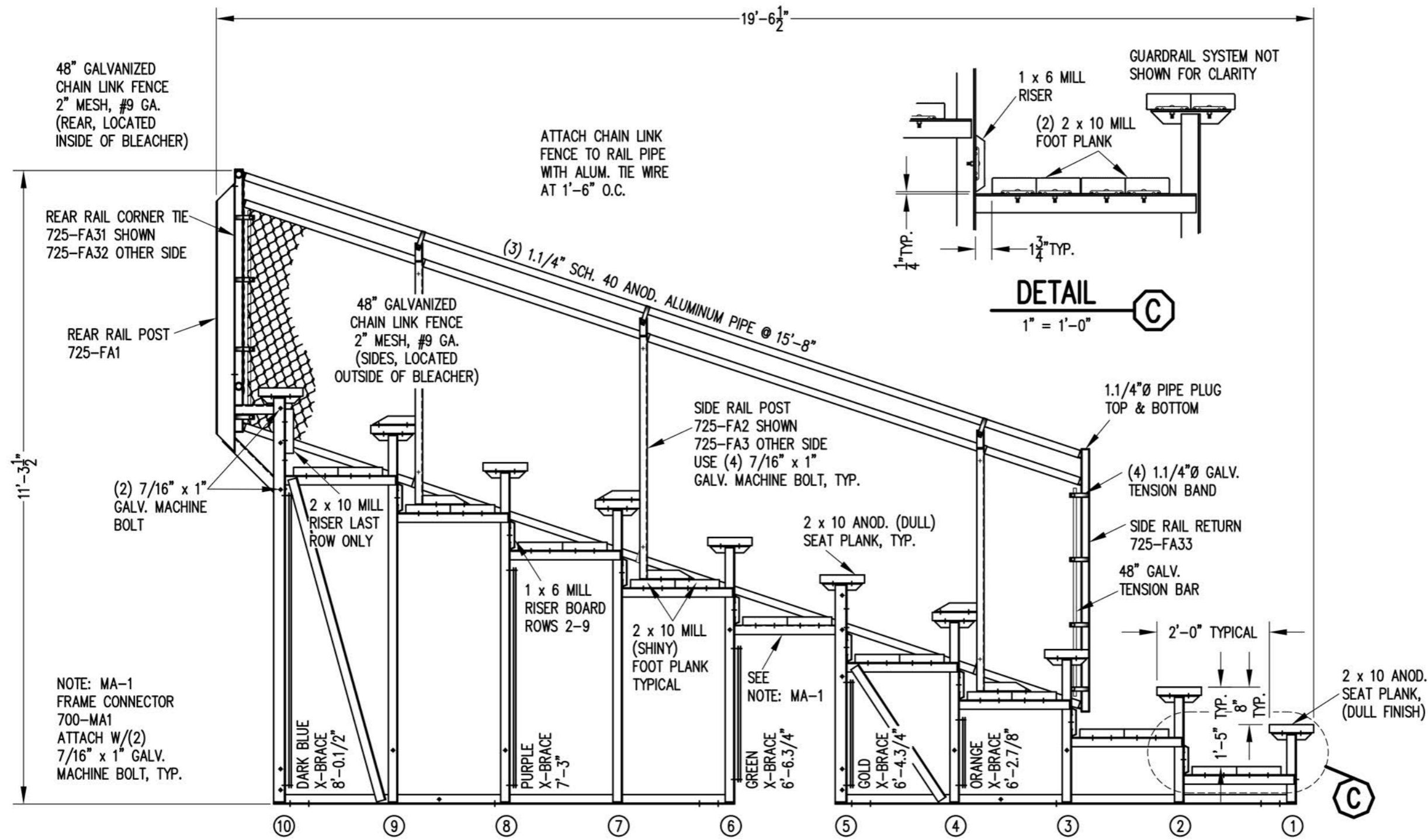
N.T.S.

- 7/16" X 1" GALV. MACH. BOLT
- △ 7/16" X 1.1/2" GALV. MACH. BOLT



FRAMING PLAN

1/4" = 1'-0"



48" GALVANIZED
CHAIN LINK FENCE
2" MESH, #9 GA.
(REAR, LOCATED
INSIDE OF BLEACHER)

REAR RAIL CORNER TIE
725-FA31 SHOWN
725-FA32 OTHER SIDE

REAR RAIL POST
725-FA1

(2) 7/16" x 1"
GALV. MACHINE
BOLT

48" GALVANIZED
CHAIN LINK FENCE
2" MESH, #9 GA.
(SIDES, LOCATED
OUTSIDE OF BLEACHER)

ATTACH CHAIN LINK
FENCE TO RAIL PIPE
WITH ALUM. TIE WIRE
AT 1'-6" O.C.

(3) 1.1/4" SCH. 40 ANOD. ALUMINUM PIPE @ 15'-8"

SIDE RAIL POST
725-FA2 SHOWN
725-FA3 OTHER SIDE
USE (4) 7/16" x 1"
GALV. MACHINE BOLT, TYP.

2 x 10 ANOD. (DULL)
SEAT PLANK, TYP.

GUARDRAIL SYSTEM NOT
SHOWN FOR CLARITY

DETAIL C
1" = 1'-0"

1.1/4"Ø PIPE PLUG
TOP & BOTTOM

(4) 1.1/4"Ø GALV.
TENSION BAND

SIDE RAIL RETURN
725-FA33

48" GALV.
TENSION BAR

2'-0" TYPICAL

2 x 10 ANOD.
SEAT PLANK,
(DULL FINISH)

NOTE: MA-1
FRAME CONNECTOR
700-MA1
ATTACH W/(2)
7/16" x 1" GALV.
MACHINE BOLT, TYP.

DARK BLUE
X-BRACE
8'-0.1/2"

PURPLE
X-BRACE
7'-3"

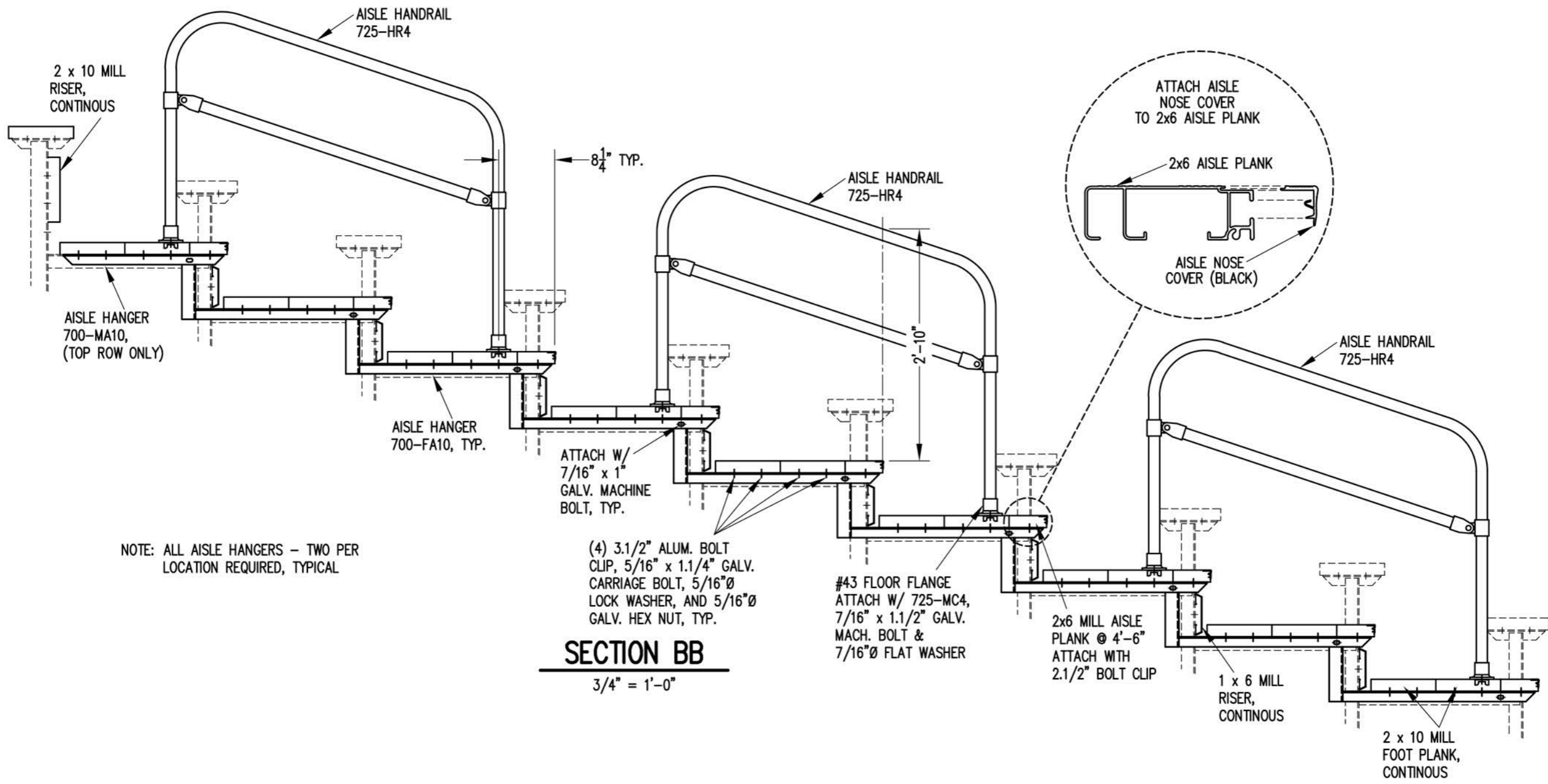
GREEN
X-BRACE
6'-6.3/4"

GOLD
X-BRACE
6'-4.3/4"

ORANGE
X-BRACE
6'-2.7/8"

⑩ ⑨ ⑧ ⑦ ⑥ ⑤ ④ ③ ② ①

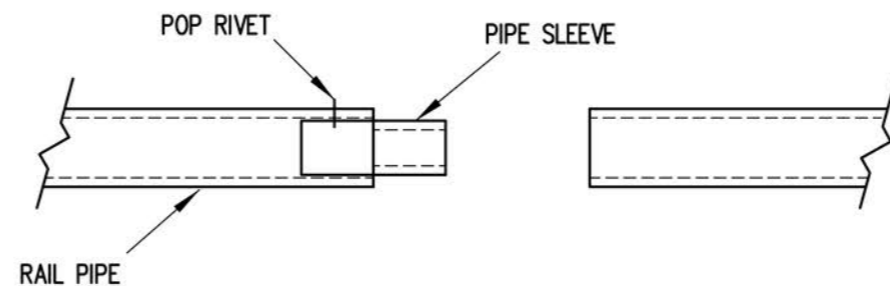
SECTION AA
1/2" = 1'-0"



NOTE: ALL AISLE HANGERS - TWO PER LOCATION REQUIRED, TYPICAL

SECTION BB

3/4" = 1'-0"

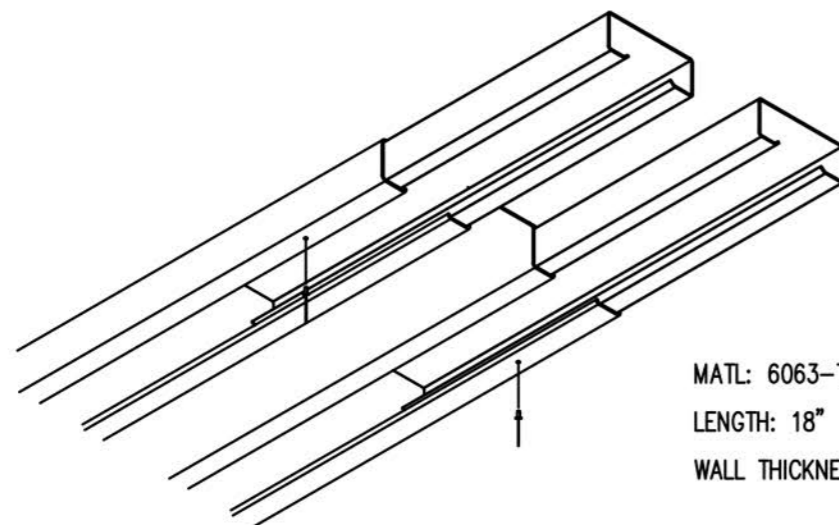


PIPE SLEEVE ASSEMBLY

1.1/2" = 1' 0"

- 1) INSERT PIPE SLEEVE APPROXIMATELY HALFWAY INTO THE RAIL PIPE. FASTEN PIPE SLEEVE WITH (1) ALUMINUM POP RIVET (5/32" X 5/8")
- 2) SLIDE THE END OF THE ADJOINING RAILPIPE OVER THE PIPE SLEEVE UNTIL THE TWO RAILS ARE FLUSH.

NOTE: PIPE SLEEVES SHOULD BE ATTACHED ON ONLY ONE END TO ALLOW FOR EXPANSION.



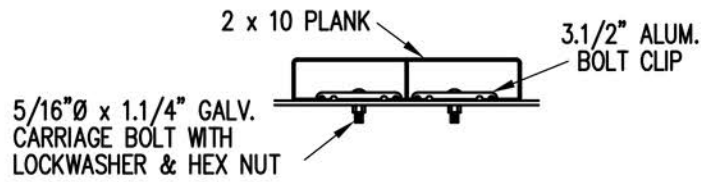
- 1) INSERT SLEEVES APPROXIMATELY HALFWAY INTO THE PLANK WITH THE ENDS STAGGERED ABOUT 1/2". FASTEN SLEEVE WITH (1) ALUMINUM POP RIVET.

- 2) SLIDE THE END OF THE ADJOINING PLANK OVER THE SLEEVES UNTIL THE TWO PLANKS ARE SNUG.

NOTE: SLEEVES SHOULD BE ATTACHED ON ONLY ONE END TO ALLOW FOR EXPANSION.

PLANK SPLICE SLEEVE ASSEMBLY

(TYP. @ ALL PLANK SPLICES)



BOLT CLIP DETAIL

1.1/2" = 1'-0"

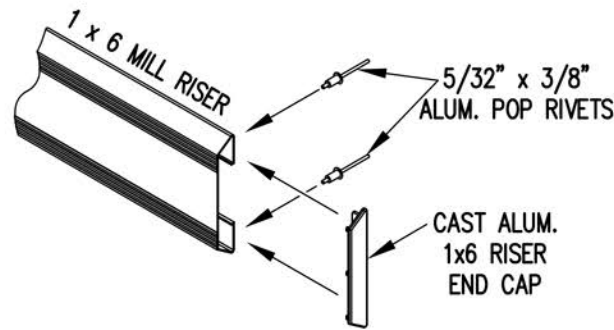


FIG.1 FIG.2

- 1) LOCATE THE CHANNEL END CAP AS SHOWN IN FIG. 1.
- 2) TAP END CAP INTO PLACE WITH RUBBER Mallet OR SOFT WOOD. FIG.2
- 3) DRILL 5/32" HOLES THROUGH THE BOTTOM FLANGE AND THE BOTTOM OUTSIDE PLANK FLANGES OF EACH PLANK. INSTALL 5/32" POP RIVETS.

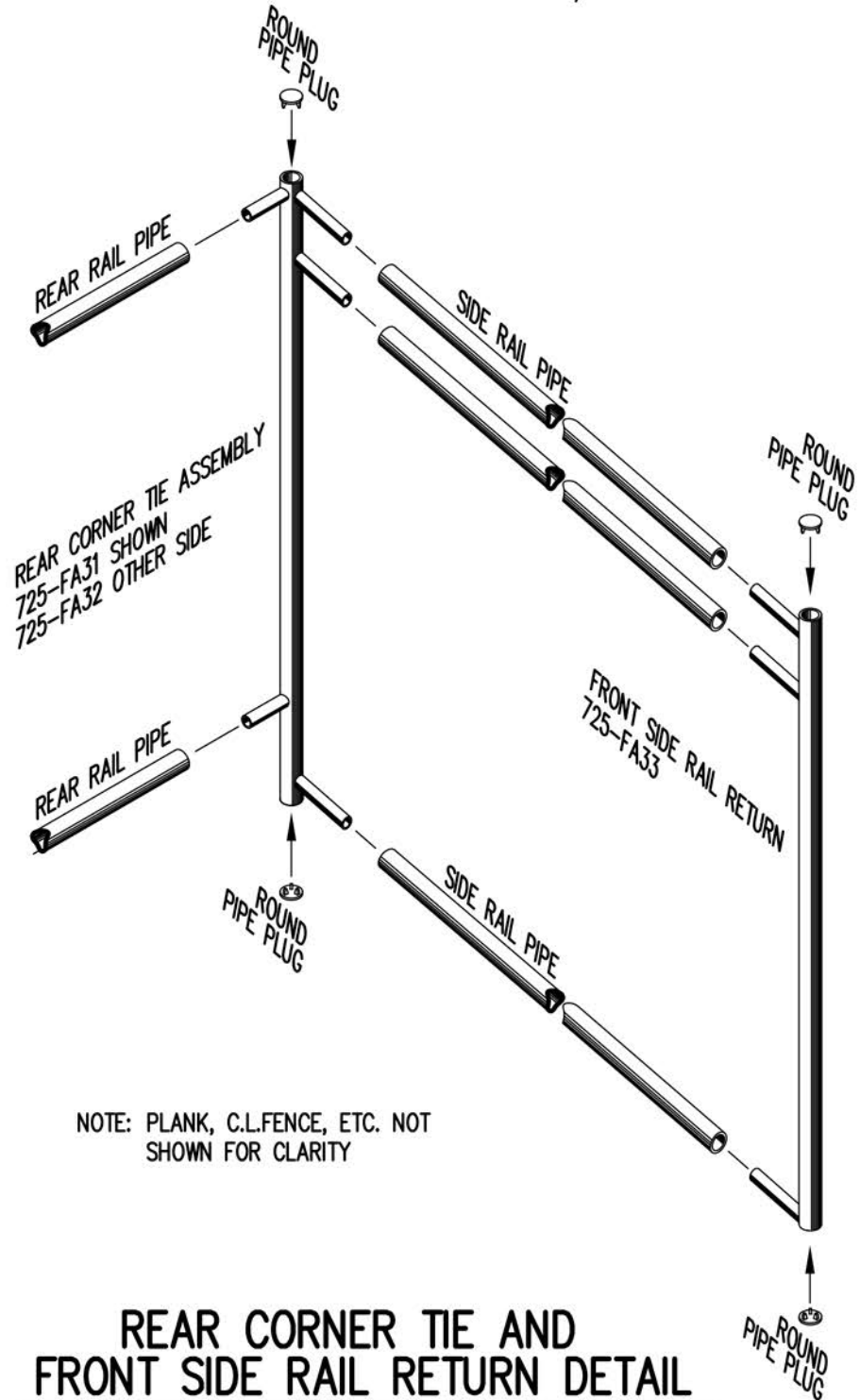
END CAP DETAIL

N.T.S.



1 x 6 RISER END CAP

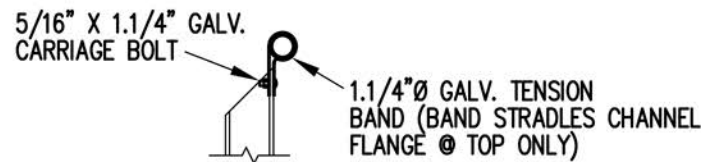
N.T.S.



NOTE: PLANK, C.L.FENCE, ETC. NOT SHOWN FOR CLARITY

REAR CORNER TIE AND FRONT SIDE RAIL RETURN DETAIL

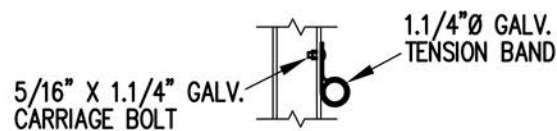
3/4" = 1'-0"



TOP RAIL

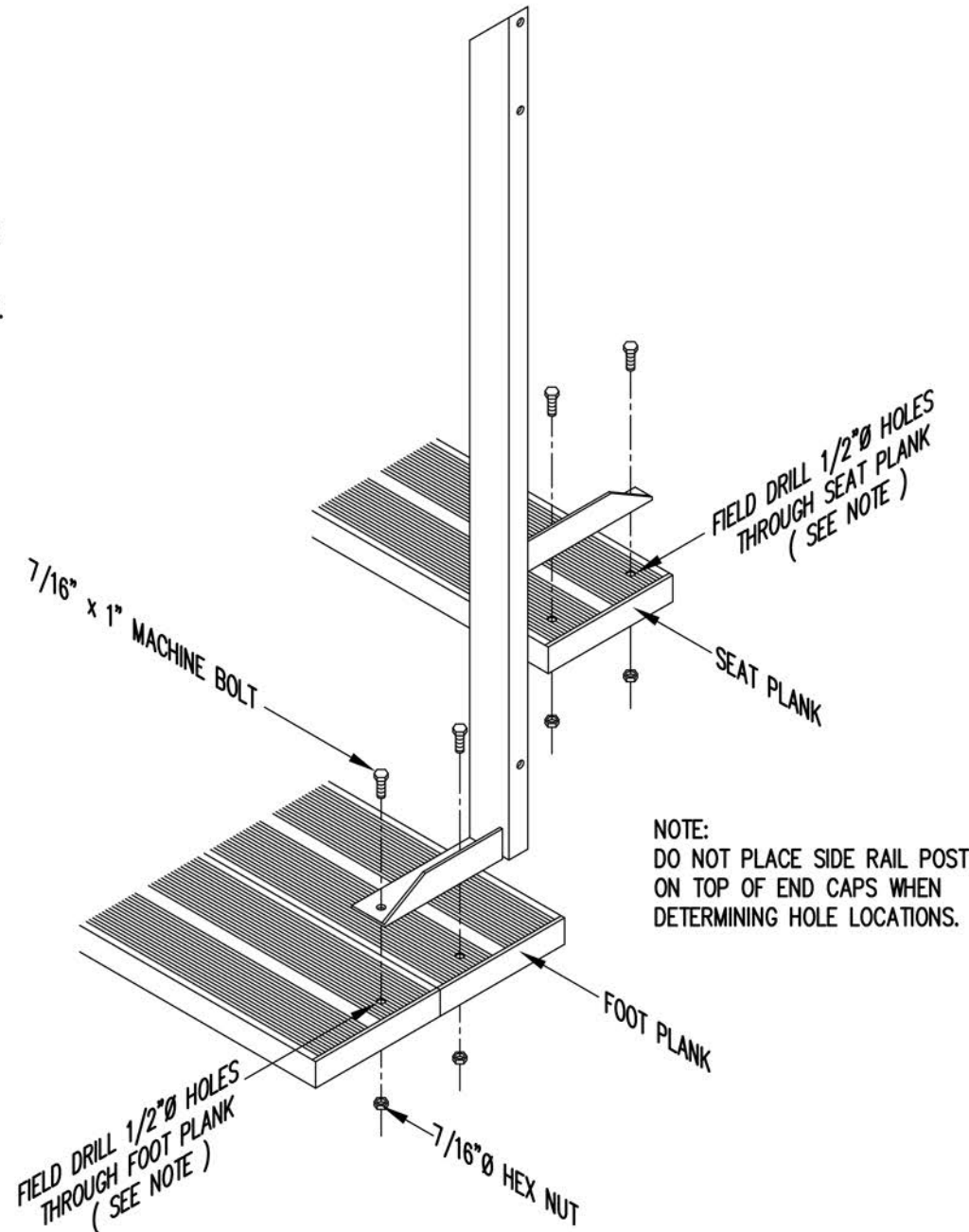


2ND RAIL



BOTTOM RAIL

RAIL PIPE ATTACHMENT



NOTE: DO NOT PLACE SIDE RAIL POST ON TOP OF END CAPS WHEN DETERMINING HOLE LOCATIONS.

TYP. SIDE RAIL POST ATTACHMENT

1" = 1'-0"