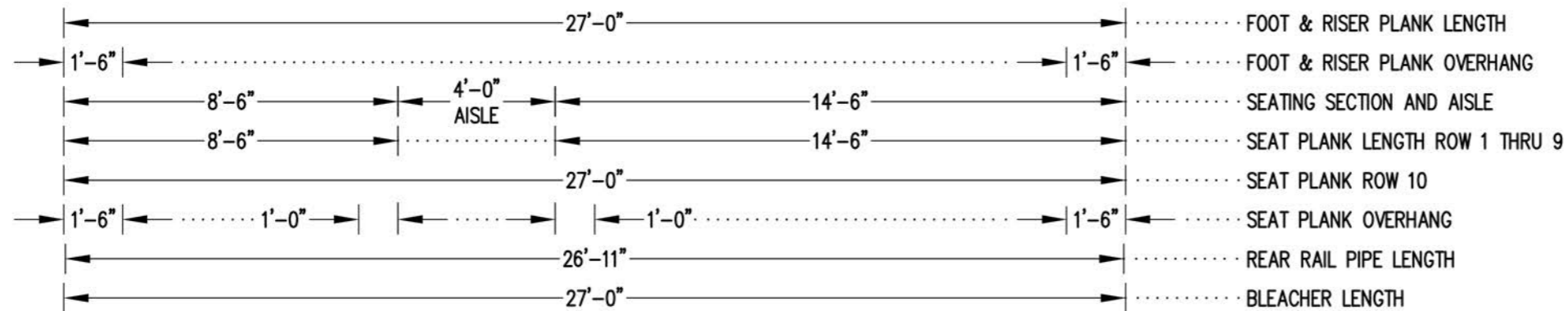
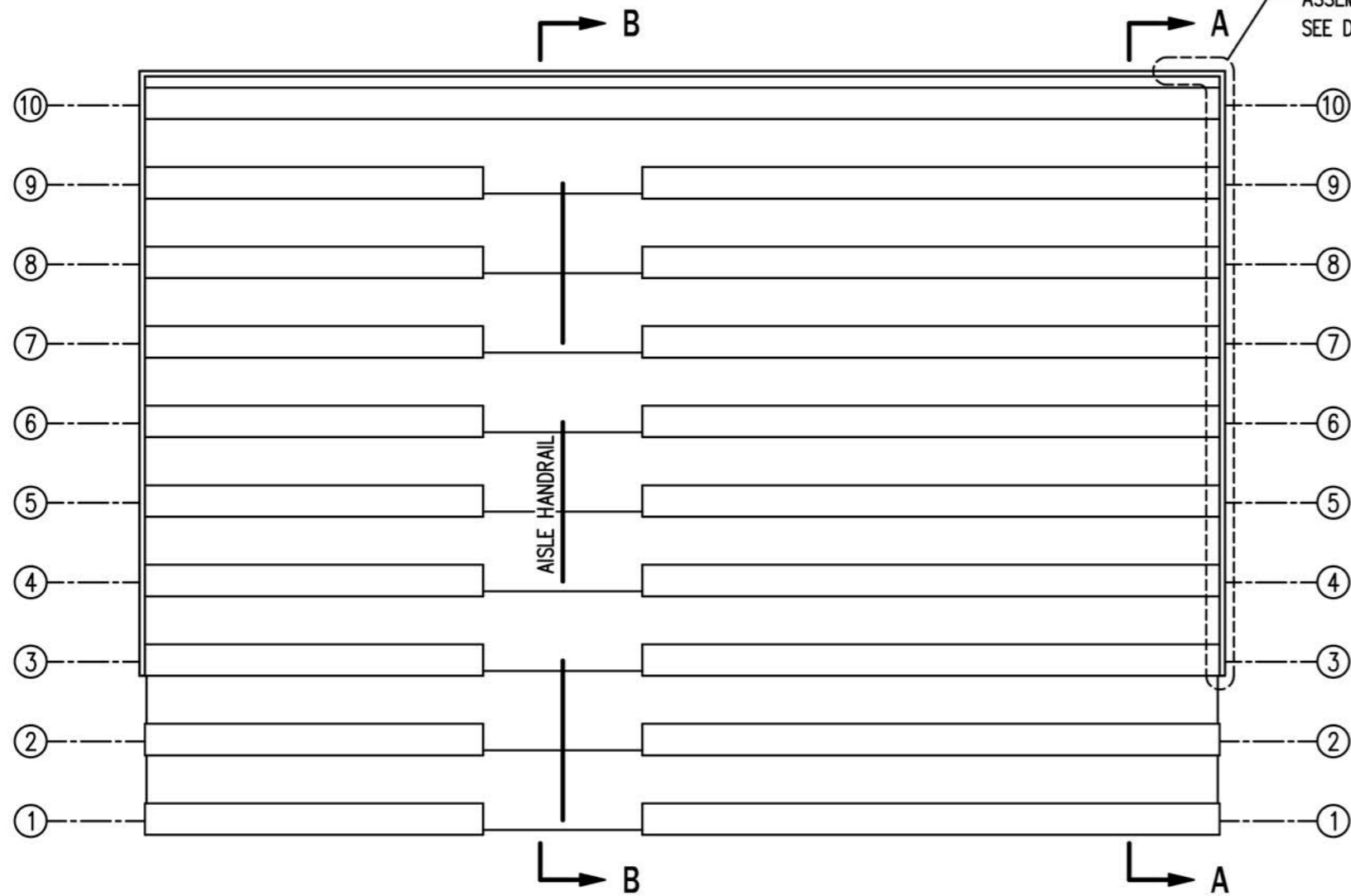


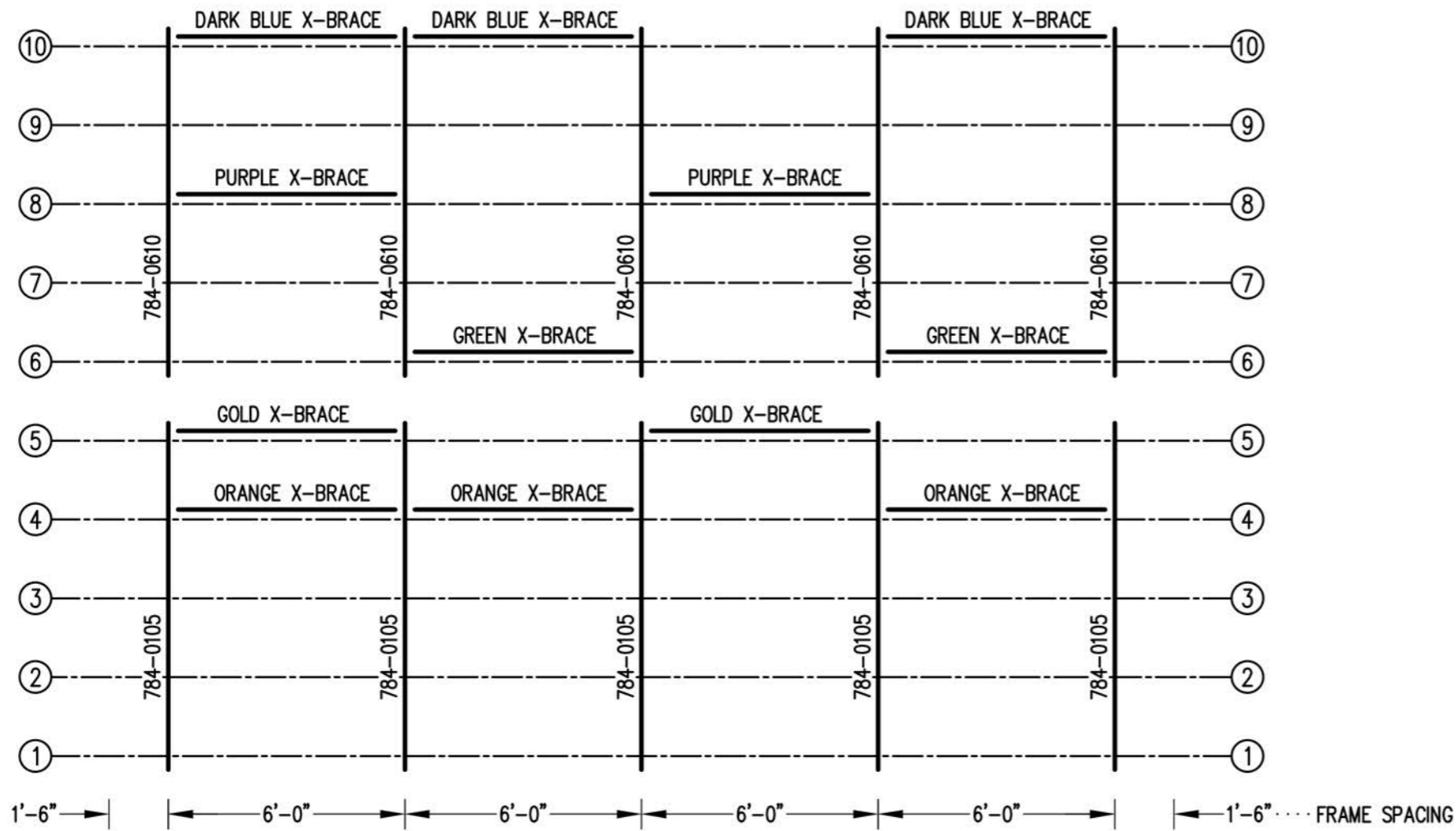
SEE REAR CORNER TIE  
ASSEMBLY DETAIL  
SEE DWG. 784-E1990



### SEATING PLAN

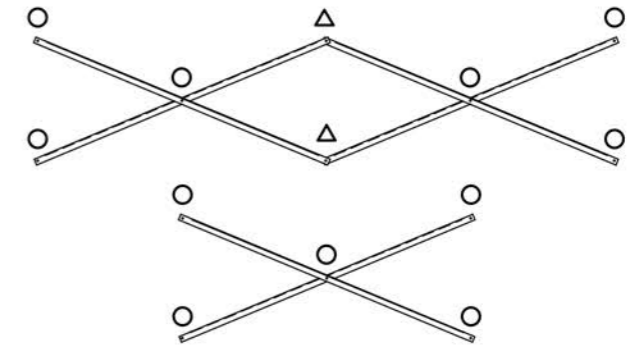
1/4" = 1'-0"

144 NET SEATS @ 18" PER SEAT



### FRAMING PLAN

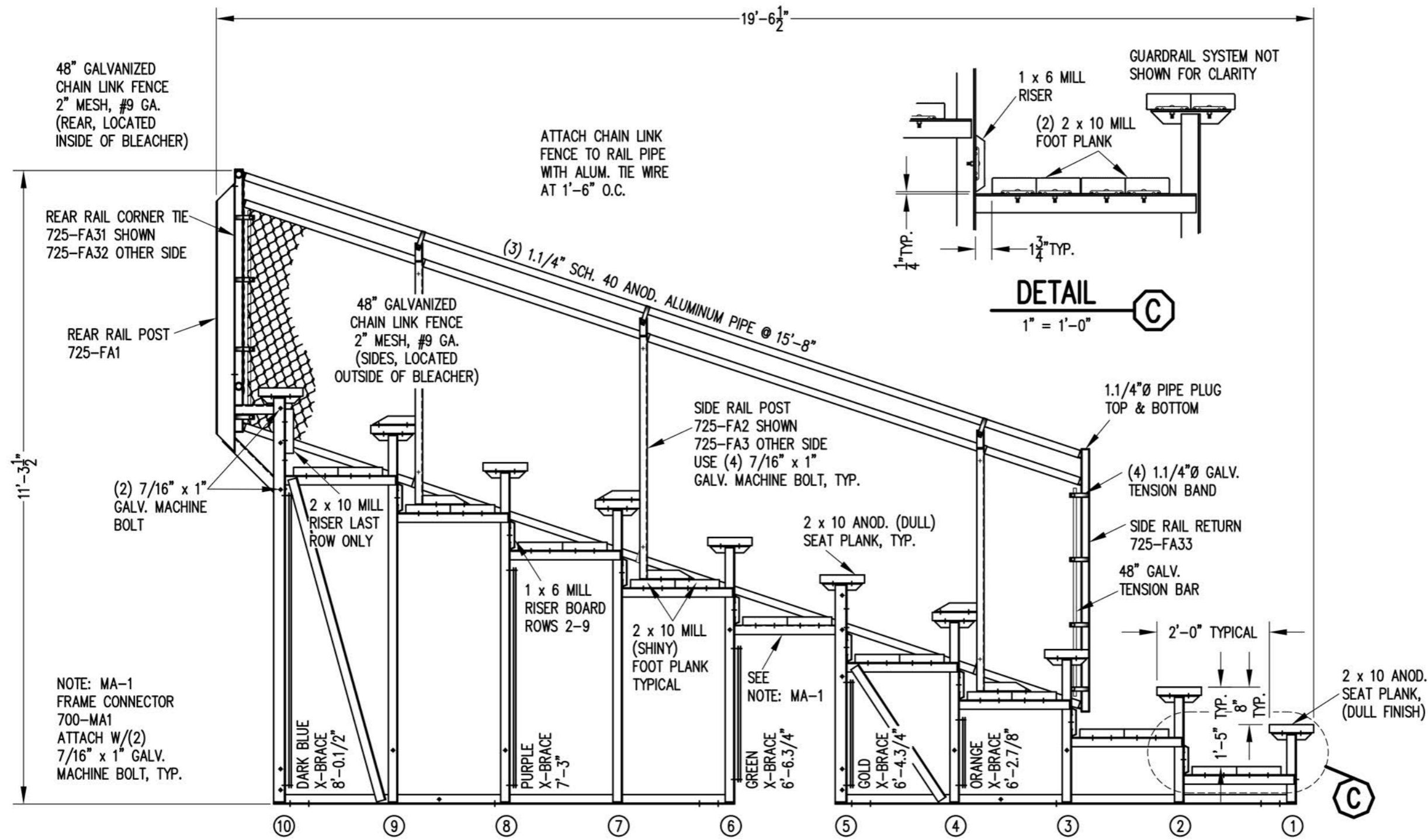
1/4" = 1'-0"



### X-BRACE DETAIL

N.T.S.

- 7/16" X 1" GALV. MACH. BOLT
- △ 7/16" X 1.1/2" GALV. MACH. BOLT



48" GALVANIZED  
CHAIN LINK FENCE  
2" MESH, #9 GA.  
(REAR, LOCATED  
INSIDE OF BLEACHER)

REAR RAIL CORNER TIE  
725-FA31 SHOWN  
725-FA32 OTHER SIDE

REAR RAIL POST  
725-FA1

(2) 7/16" x 1"  
GALV. MACHINE  
BOLT

48" GALVANIZED  
CHAIN LINK FENCE  
2" MESH, #9 GA.  
(SIDES, LOCATED  
OUTSIDE OF BLEACHER)

ATTACH CHAIN LINK  
FENCE TO RAIL PIPE  
WITH ALUM. TIE WIRE  
AT 1'-6" O.C.

(3) 1.1/4" SCH. 40 ANOD. ALUMINUM PIPE @ 15'-8"

SIDE RAIL POST  
725-FA2 SHOWN  
725-FA3 OTHER SIDE  
USE (4) 7/16" x 1"  
GALV. MACHINE BOLT, TYP.

2 x 10 ANOD. (DULL)  
SEAT PLANK, TYP.

GUARDRAIL SYSTEM NOT  
SHOWN FOR CLARITY

**DETAIL C**  
1" = 1'-0"

1.1/4"Ø PIPE PLUG  
TOP & BOTTOM

(4) 1.1/4"Ø GALV.  
TENSION BAND

SIDE RAIL RETURN  
725-FA33

48" GALV.  
TENSION BAR

2'-0" TYPICAL

2 x 10 ANOD.  
SEAT PLANK,  
(DULL FINISH)

NOTE: MA-1  
FRAME CONNECTOR  
700-MA1  
ATTACH W/(2)  
7/16" x 1" GALV.  
MACHINE BOLT, TYP.

DARK BLUE  
X-BRACE  
8'-0.1/2"

PURPLE  
X-BRACE  
7'-3"

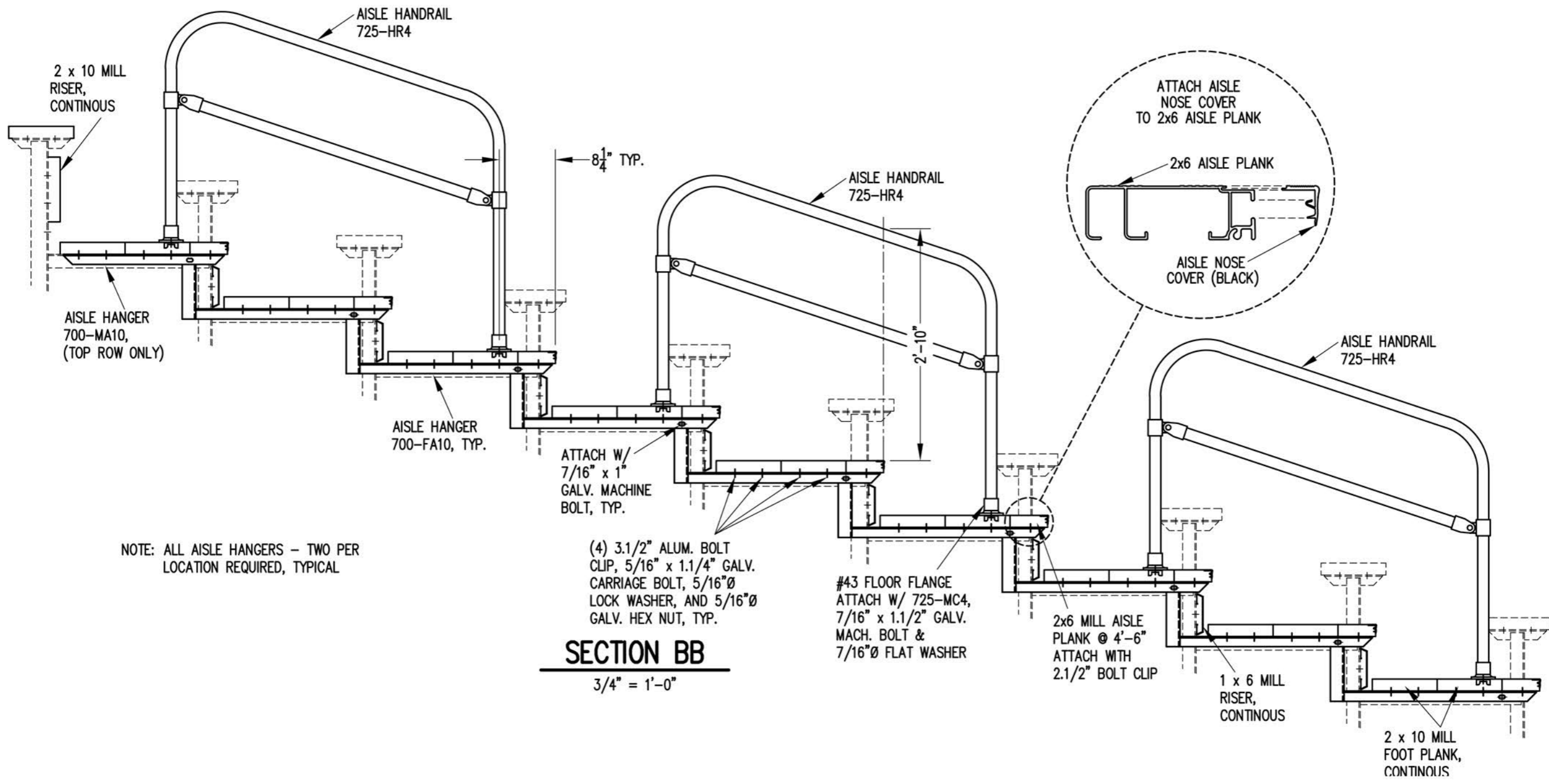
GREEN  
X-BRACE  
6'-6.3/4"

GOLD  
X-BRACE  
6'-4.3/4"

ORANGE  
X-BRACE  
6'-2.7/8"

⑩ ⑨ ⑧ ⑦ ⑥ ⑤ ④ ③ ② ①

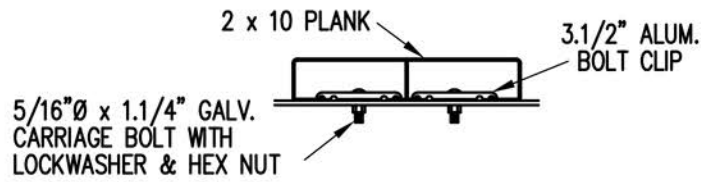
**SECTION AA**  
1/2" = 1'-0"



NOTE: ALL AISLE HANGERS - TWO PER LOCATION REQUIRED, TYPICAL

**SECTION BB**

3/4" = 1'-0"



**BOLT CLIP DETAIL**

1.1/2" = 1'-0"

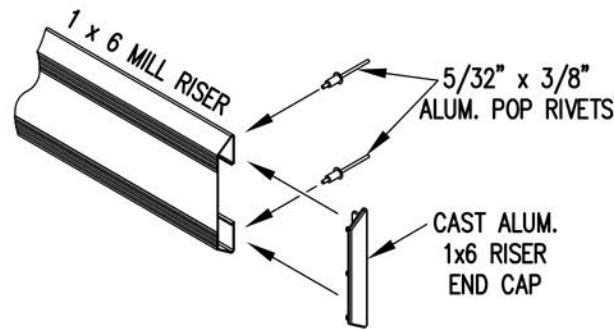


FIG.1 FIG.2

- 1) LOCATE THE CHANNEL END CAP AS SHOWN IN FIG. 1.
- 2) TAP END CAP INTO PLACE WITH RUBBER Mallet OR SOFT WOOD. FIG.2
- 3) DRILL 5/32" HOLES THROUGH THE BOTTOM FLANGE AND THE BOTTOM OUTSIDE PLANK FLANGES OF EACH PLANK. INSTALL 5/32" POP RIVETS.

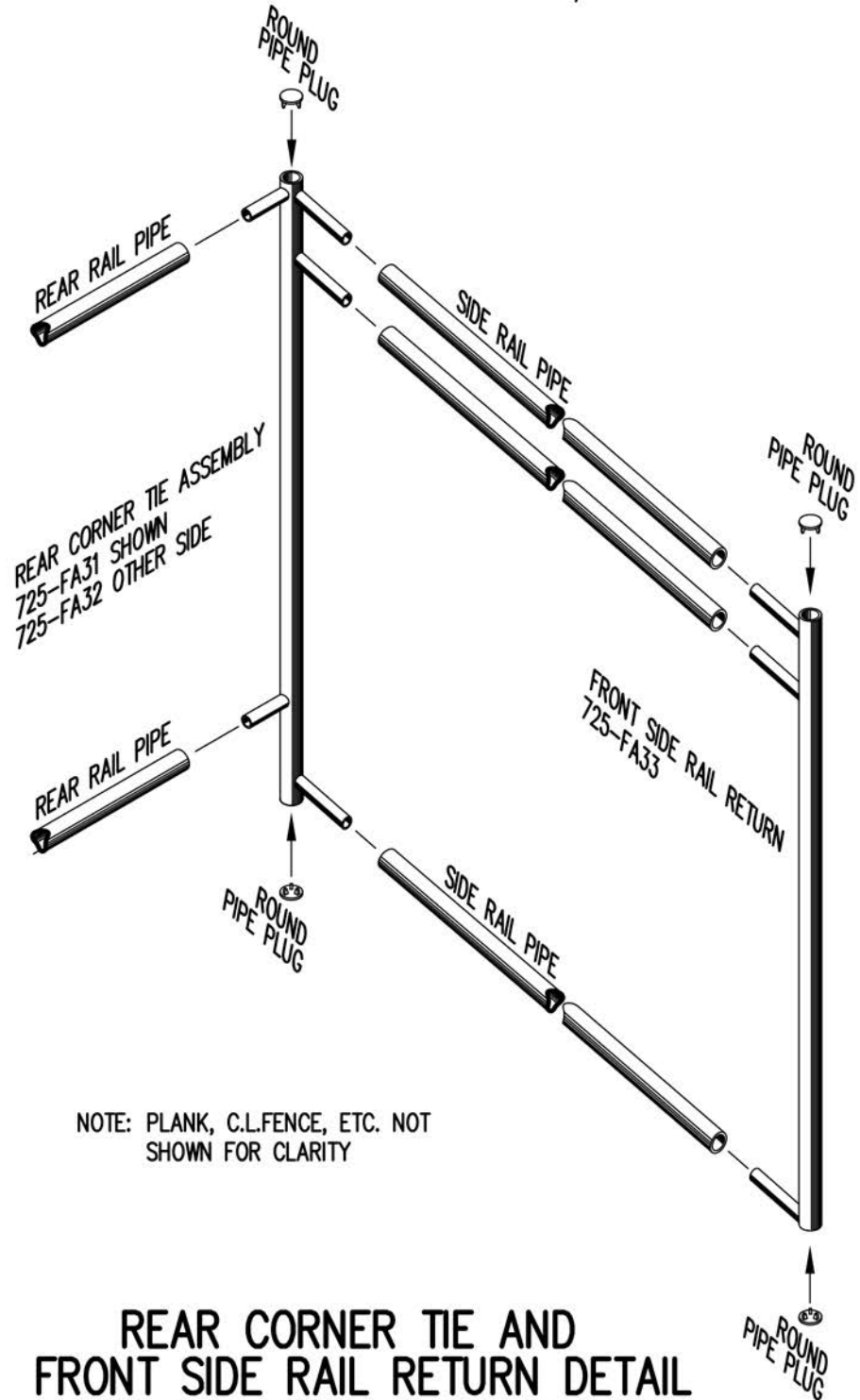
**END CAP DETAIL**

N.T.S.



**1 x 6 RISER END CAP**

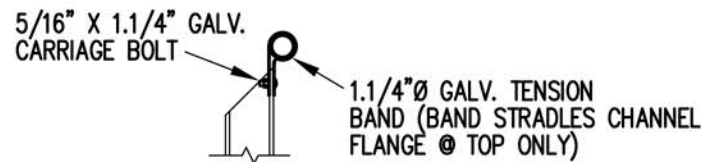
N.T.S.



NOTE: PLANK, C.L.FENCE, ETC. NOT SHOWN FOR CLARITY

**REAR CORNER TIE AND FRONT SIDE RAIL RETURN DETAIL**

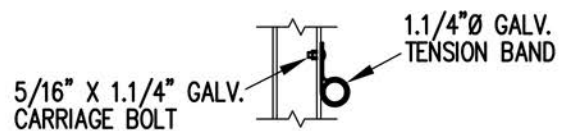
3/4" = 1'-0"



**TOP RAIL**

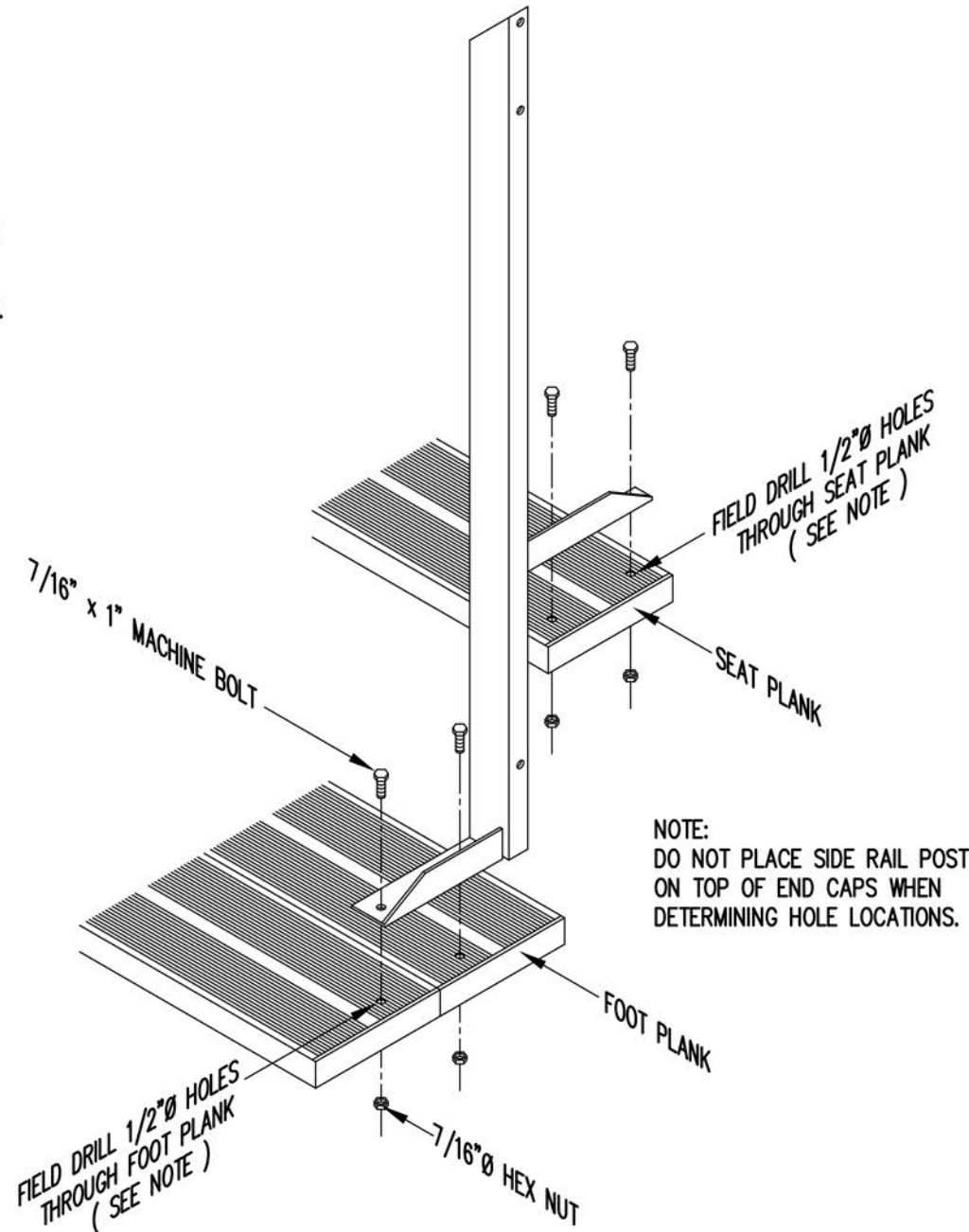


**2ND RAIL**



**BOTTOM RAIL**

**RAIL PIPE ATTACHMENT**



NOTE: DO NOT PLACE SIDE RAIL POST ON TOP OF END CAPS WHEN DETERMINING HOLE LOCATIONS.

**TYP. SIDE RAIL POST ATTACHMENT**

1" = 1'-0"