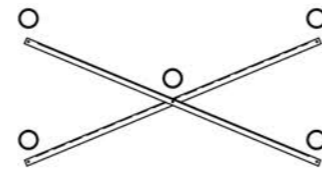
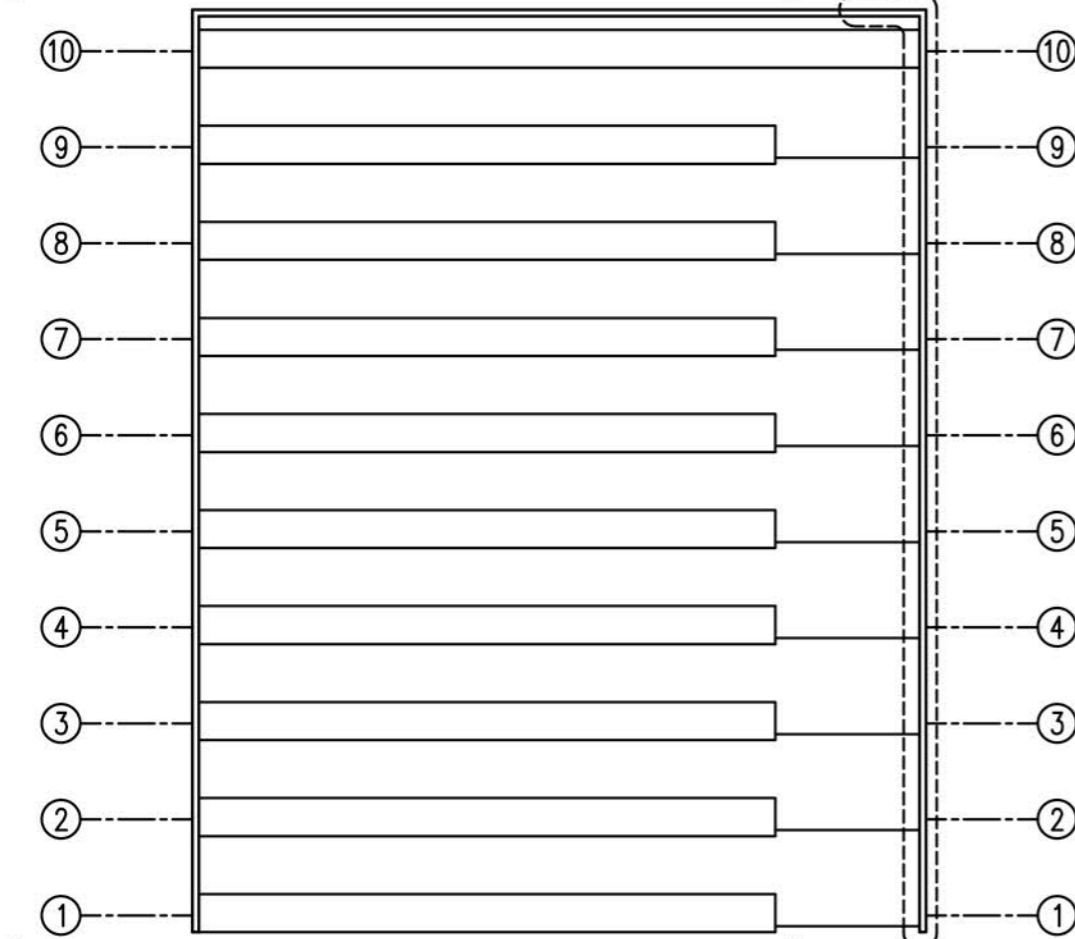


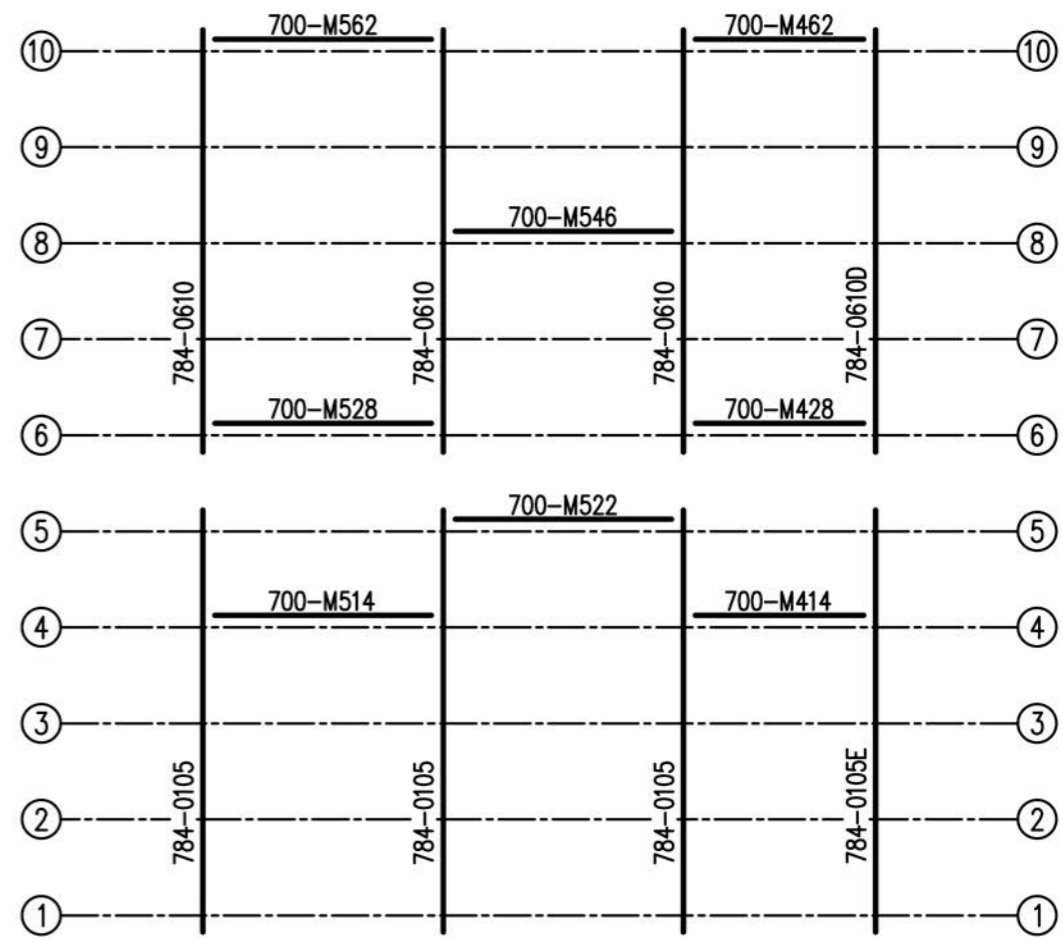
SEE REAR CORNER TIE ASSEMBLY DETAIL SEE DWG. 784-E2000



X-BRACE DETAIL

N.T.S.

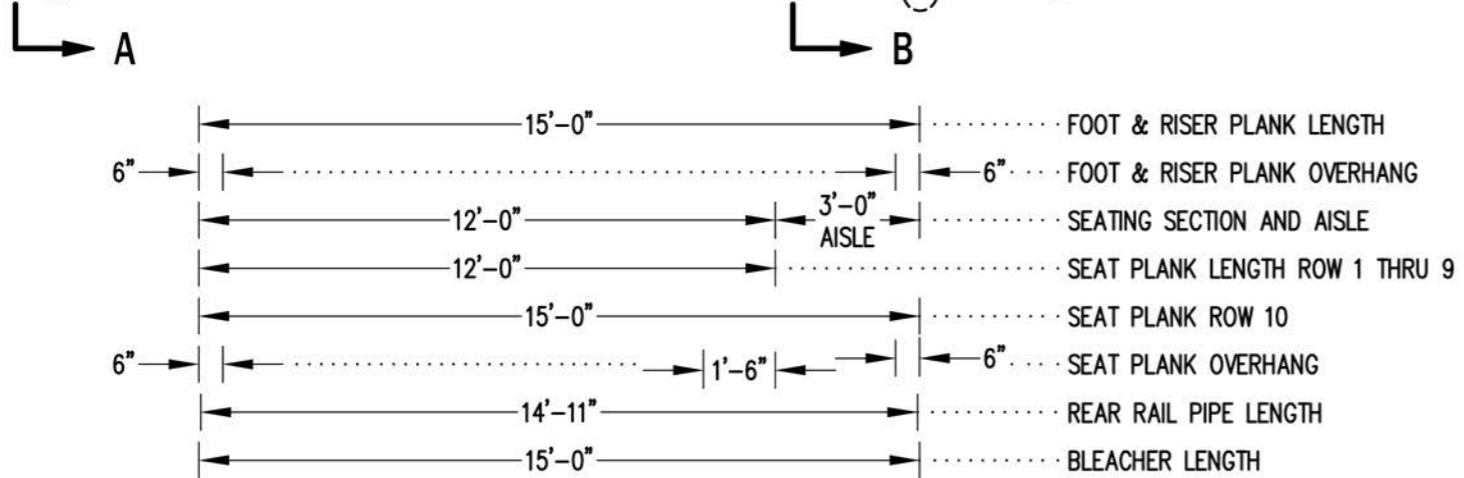
- 7/16" X 1" GALV. MACH. BOLT
- △ 7/16" X 1.1/2" GALV. MACH. BOLT



6" | 5'-0" | 5'-0" | 4'-0" | 6" ... FRAME SPACING

FRAMING PLAN

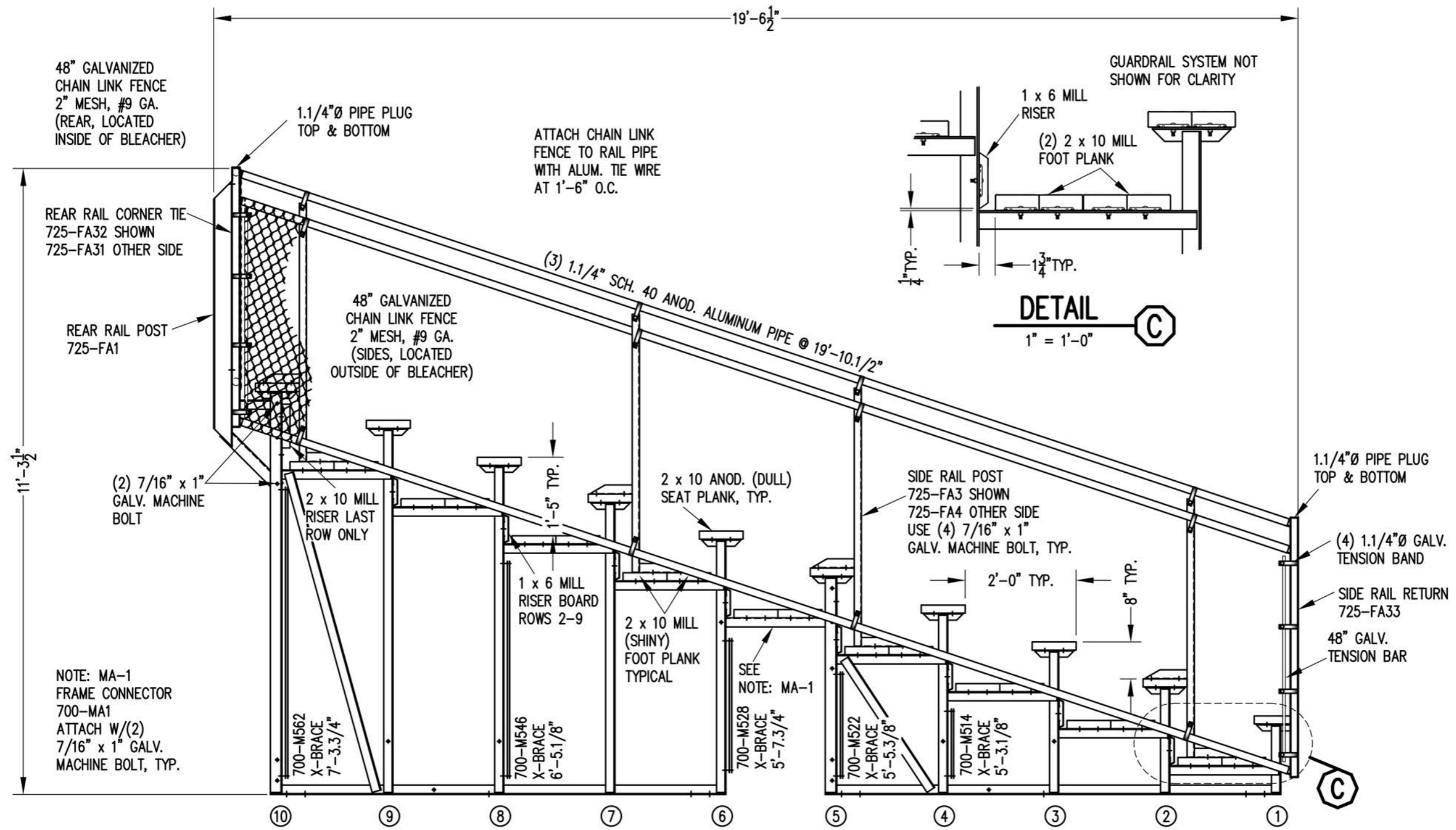
1/4" = 1'-0"



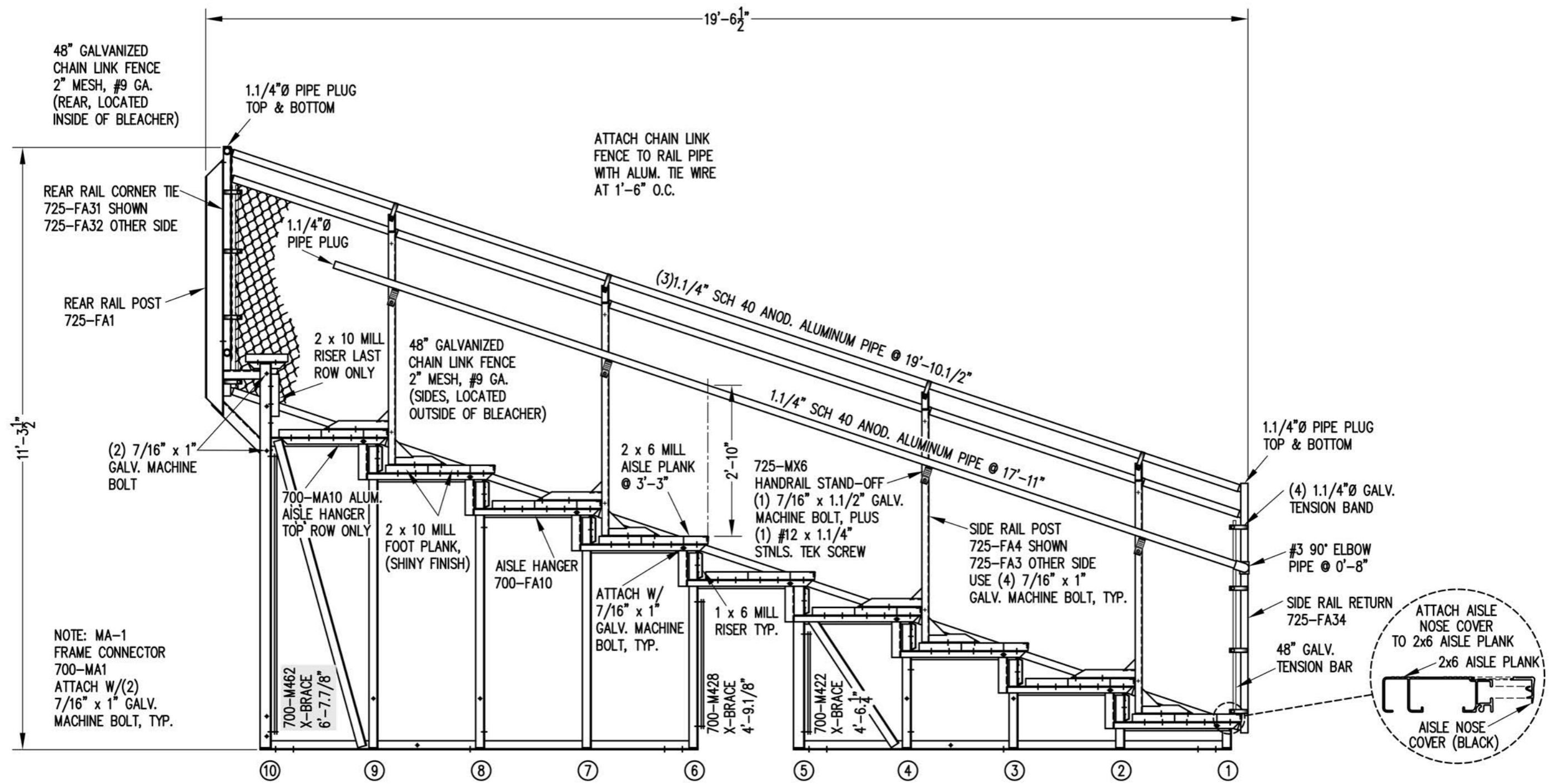
SEATING PLAN

1/4" = 1'-0"

82 NET SEATS @ 18" PER SEAT



VIEW AA
1/2" = 1'-0"



48" GALVANIZED CHAIN LINK FENCE 2" MESH, #9 GA. (REAR, LOCATED INSIDE OF BLEACHER)

REAR RAIL CORNER TIE 725-FA31 SHOWN 725-FA32 OTHER SIDE

REAR RAIL POST 725-FA1

(2) 7/16" x 1" GALV. MACHINE BOLT

1.1/4"Ø PIPE PLUG TOP & BOTTOM

2 x 10 MILL RISER LAST ROW ONLY

48" GALVANIZED CHAIN LINK FENCE 2" MESH, #9 GA. (SIDES, LOCATED OUTSIDE OF BLEACHER)

700-MA10 ALUM. AISLE HANGER TOP ROW ONLY

2 x 10 MILL FOOT PLANK, (SHINY FINISH)

AISLE HANGER 700-FA10

2 x 6 MILL AISLE PLANK @ 3'-3"

ATTACH W/ 7/16" x 1" GALV. MACHINE BOLT, TYP.

1 x 6 MILL RISER TYP.

725-MX6 HANDRAIL STAND-OFF (1) 7/16" x 1.1/2" GALV. MACHINE BOLT, PLUS (1) #12 x 1.1/4" STNLS. TEK SCREW

SIDE RAIL POST 725-FA4 SHOWN 725-FA3 OTHER SIDE USE (4) 7/16" x 1" GALV. MACHINE BOLT, TYP.

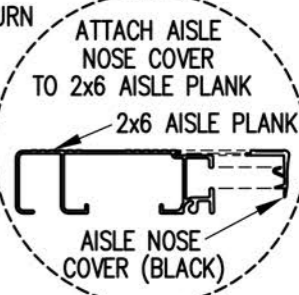
1.1/4"Ø PIPE PLUG TOP & BOTTOM

(4) 1.1/4"Ø GALV. TENSION BAND

#3 90° ELBOW PIPE @ 0'-8"

SIDE RAIL RETURN 725-FA34

48" GALV. TENSION BAR

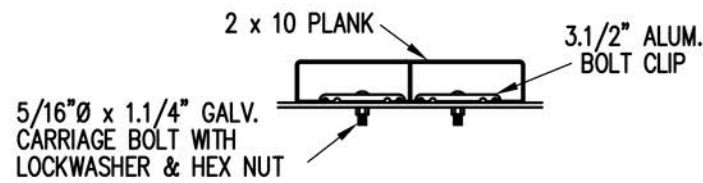


NOTE: MA-1 FRAME CONNECTOR 700-MA1 ATTACH W/(2) 7/16" x 1" GALV. MACHINE BOLT, TYP.

NOTE: ALL AISLE HANGERS - TWO PER LOCATION REQUIRED, TYPICAL

SECTION BB

1/2" = 1'-0"



BOLT CLIP DETAIL

1.1/2" = 1'-0"



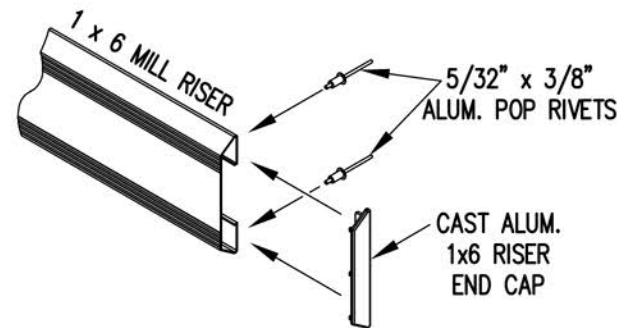
FIG.1

FIG.2

- 1) LOCATE THE CHANNEL END CAP AS SHOWN IN FIG. 1.
- 2) TAP END CAP INTO PLACE WITH RUBBER Mallet OR SOFT WOOD. FIG.2
- 3) DRILL 5/32" HOLES THROUGH THE BOTTOM FLANGE AND THE BOTTOM OUTSIDE PLANK FLANGES OF EACH PLANK. INSTALL 5/32" POP RIVETS.

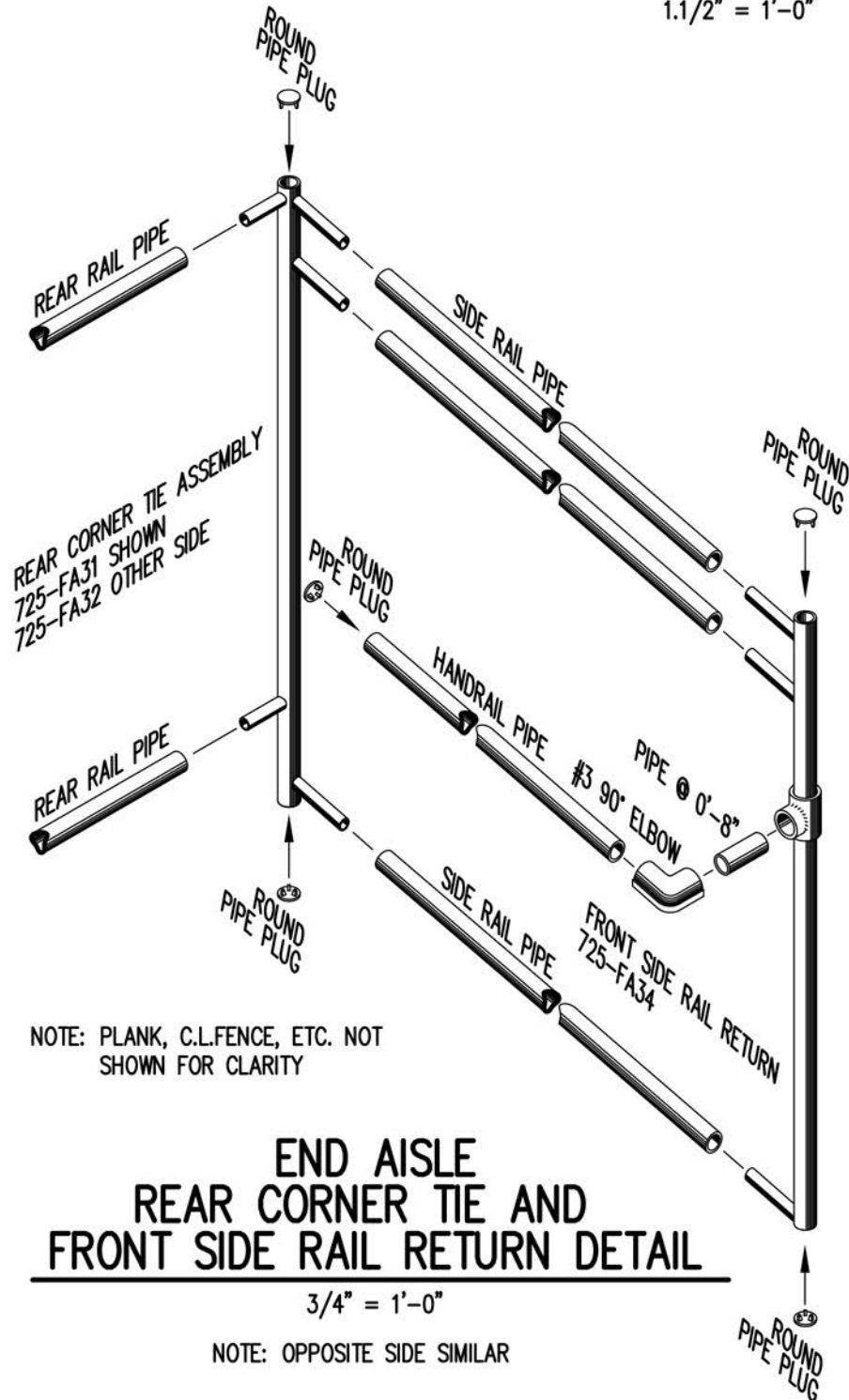
END CAP DETAIL

N.T.S.



1 x 6 RISER END CAP

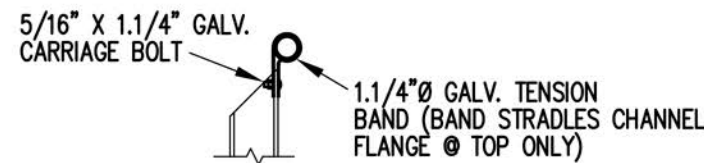
N.T.S.



END AISLE REAR CORNER TIE AND FRONT SIDE RAIL RETURN DETAIL

3/4" = 1'-0"

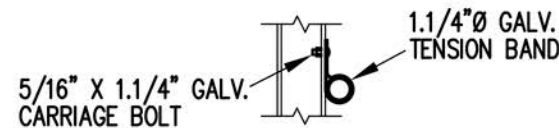
NOTE: OPPOSITE SIDE SIMILAR



TOP RAIL

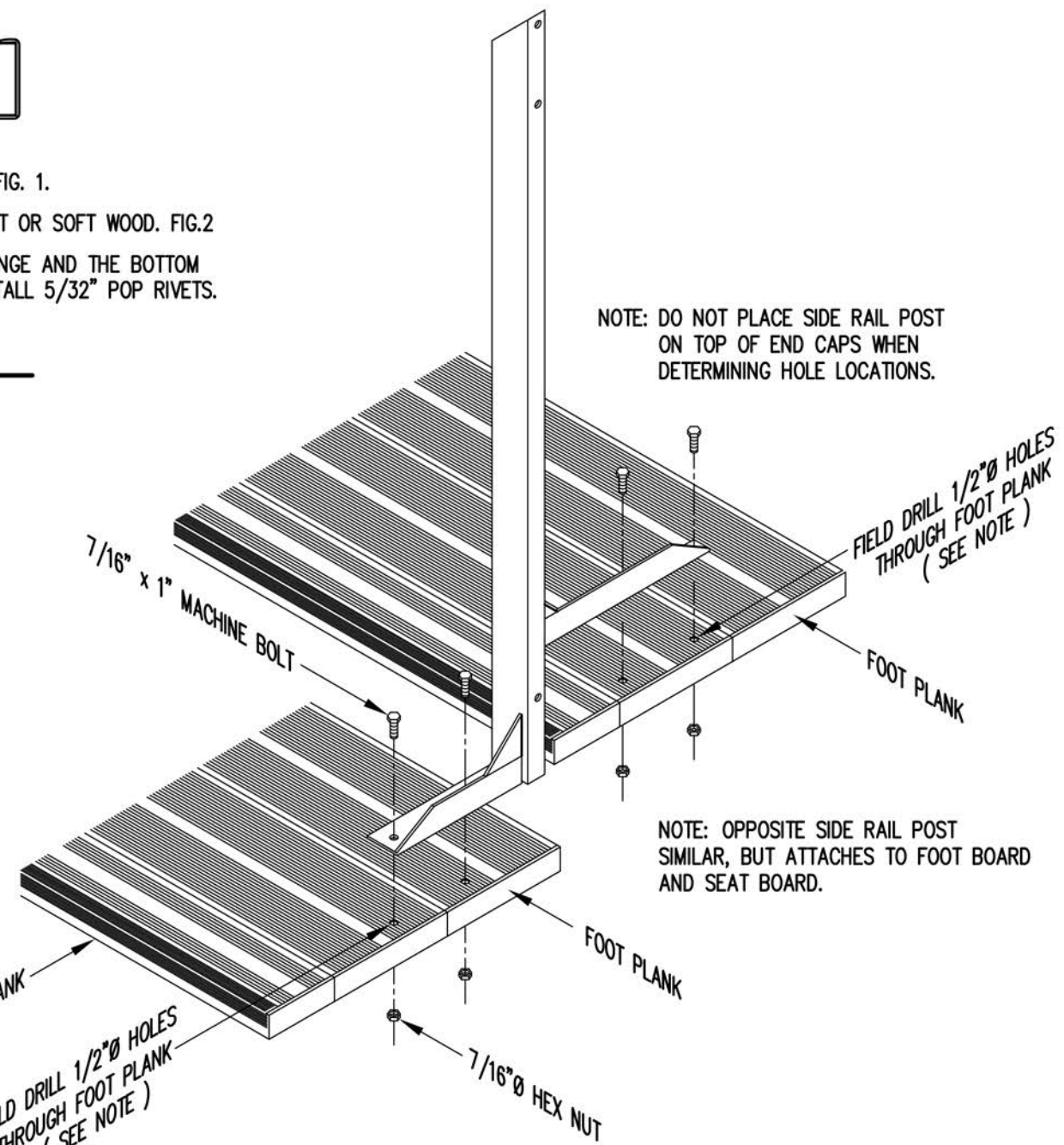


2ND RAIL



BOTTOM RAIL

RAIL PIPE ATTACHMENT



TYP. SIDE RAIL POST ATTACHMENT AT END AISLE

NOTE: DO NOT PLACE SIDE RAIL POST ON TOP OF END CAPS WHEN DETERMINING HOLE LOCATIONS.

NOTE: OPPOSITE SIDE RAIL POST SIMILAR, BUT ATTACHES TO FOOT BOARD AND SEAT BOARD.

FIELD DRILL 1/2" HOLES THROUGH FOOT PLANK (SEE NOTE)