

CCW Series WBM 220/230

Wall Mount Retractable Barrier

The CCW Series WBM has an ABS casing for durability, mounted on the wall and used in hallways or areas with limited floor space.



Belt End Options

Universal Belt End



Magnetic Belt End



Mounting Options

Fixed Mount
Mount



Magnetic
Mount



Specification Details - 220/230

Belt Lengths	Case Height	Case Width	Case Depth
8.5ft 10ft 13ft 15ft / 20ft 25ft 30 ft	5.5 in / 6.25 in	3.75 in / 4.5 in	3.5 in / 4.5 in
Belt Width	Case Material	Weight	Included Accessories
2in	ABS	1 lb / 1.8 lbs	Wall Receiver and Hardware

Standard Belt Colors and Messages

Case Color Options



Black



Black and Yellow

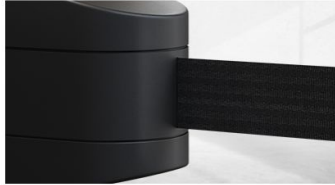


CCW Series WBM 220/230



Wall Mount Retractable Barrier

The CCW Series WBM has an ABS casing for durability, mounted on the wall and used in hallways or areas with limited floor space.



Great for use in tight spaces

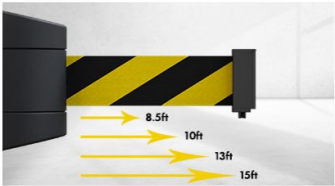
Small profile and capable of mounting on a variety of flat surface. Designed to be used in areas where space is limited. Great for use in warehousing, manufacturing and construction areas.

ABS Casing

Designed with a thick ABS composite casing that can stand up to the elements in any environment.

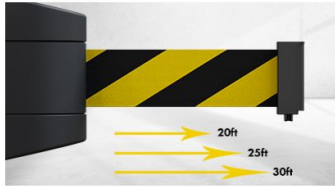
Herringbone Belt Webbing

Belt is crafted from strong webbed nylon material for ultimate durability.



Multiple Belt Lengths

Available with belt lengths from 8.5ft to 15ft – you choose the best length to fit your needs.



Multiple Belt Lengths

Available with belt lengths from 20ft to 30ft – you choose the best length to fit your needs.



Slow Retracting Belt

Equipped with built-in advanced slow braking retractable belt technology.



Belt Colors & Message Prints

Available in a variety of standard colors or find the message to suit your application.

