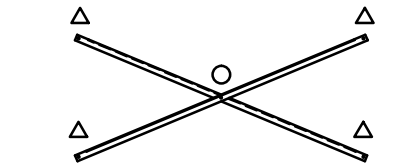


**SEAT & FRAMING PLAN**

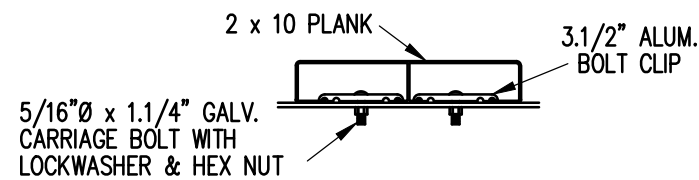
1/4" = 1'-0"  
20 NET SEATS @ 18" PER SEAT



**X-BRACE DETAIL**

N.T.S.

- 7/16" X 1" GALV. MACH. BOLT
- △ 7/16" X 3" GALV. MACH. BOLT



**BOLT CLIP DETAIL**

1.1/2" = 1'-0"

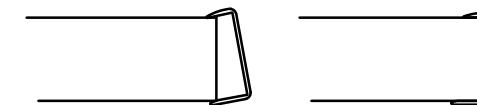


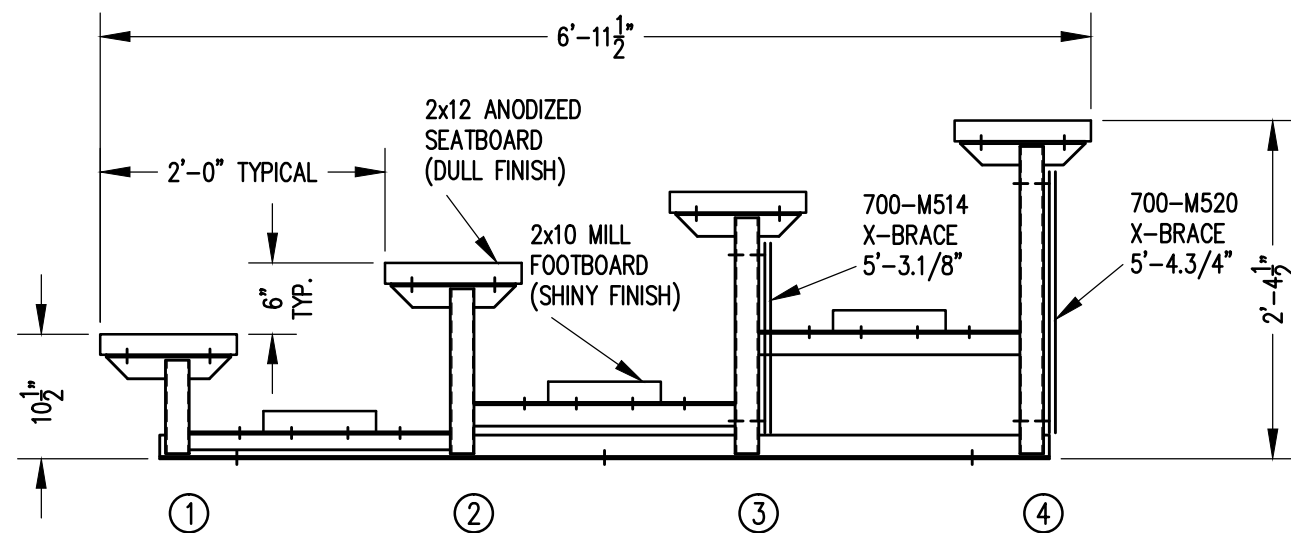
FIG.1

FIG.2

- 1) LOCATE THE CHANNEL END CAP AS SHOWN IN FIG. 1.
- 2) TAP END CAP INTO PLACE WITH RUBBER Mallet OR SOFT WOOD. FIG.2
- 3) DRILL 5/32" HOLES THROUGH THE BOTTOM FLANGE AND THE BOTTOM OUTSIDE PLANK FLANGES OF EACH PLANK. INSTALL 5/32" POP RIVETS.

**END CAP DETAIL**

N T S



**SECTION AA**

3/4" = 1'-0"

|       |                                 |                                 |     |                         |
|-------|---------------------------------|---------------------------------|-----|-------------------------|
| SCALE | AS NOTED                        | REVISIONS                       | BY  | DATE                    |
| DATE  | 02/02/09                        | UPDATED TO 700 SERIES STANDARDS | GDK | 02/13                   |
| DR'N  | WHW                             | CKD                             |     |                         |
| AP'VD |                                 |                                 |     |                         |
| TITLE | LTSA 4-7.5 SEATING/FRAMING PLAN |                                 |     | NO.<br><b>864-E1066</b> |