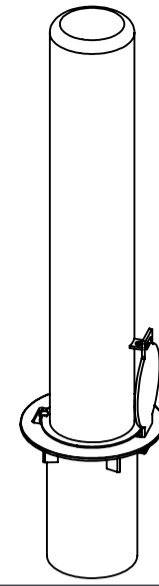
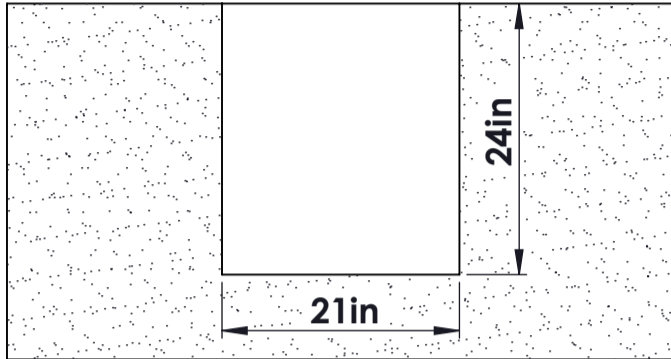


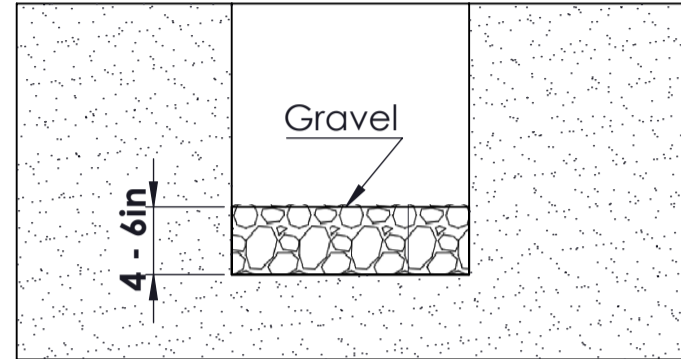
EMBEDMENT SLEEVE INSTALLATION REMOVABLE BOLLARD – 4.5" & 6" DIA



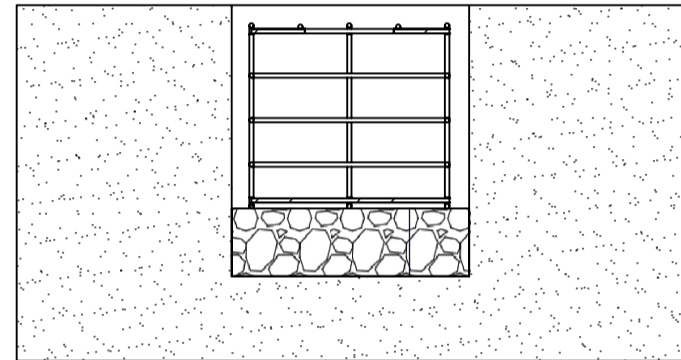
STEP 1: Core hole 21" wide x 24" deep



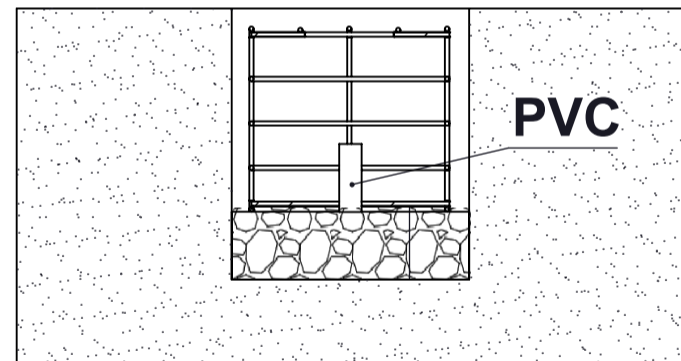
STEP 2: Fill with 4-6" Gravel



STEP 3: Add Optional Rebar reinforcement - Prepare 30" deep hole. Build Rebar box 1/2"x54.5"x12. Add Optional 1/2" Rebar x 25" x 4 placed vertical to bollard. Add Optional Additional 3 Rebar horizontally at 5", 8" and 11" depth



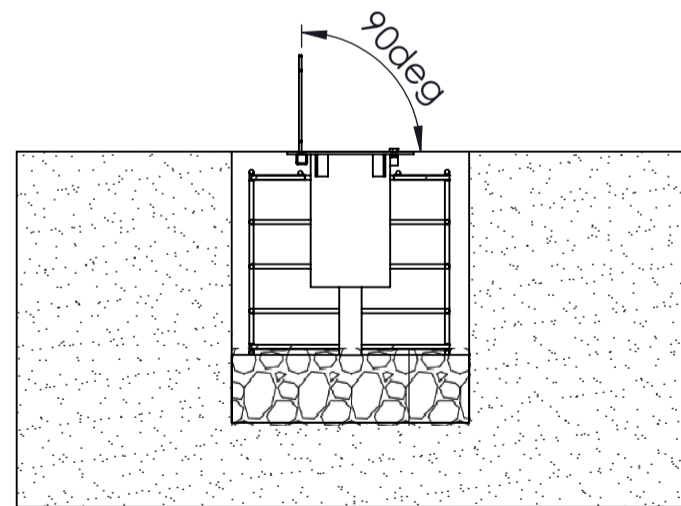
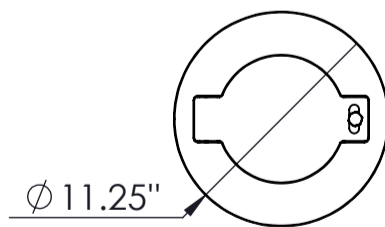
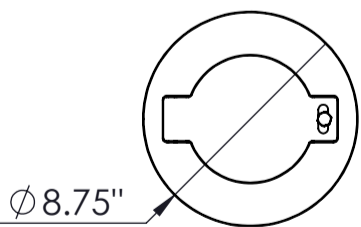
STEP 4: Add Optional 2" PVC Drainage Pipe inserted in Removable bollard



STEP 5: Place Embedment sleeve with lid flush to concrete (Place bollard with hinge 90 degrees away from Vehicle Impact Direction)

4.5" Diameter Sleeve

6" Diameter Sleeve



STEP 6: Plumb and fill hole with Concrete

