

NAVIENTMATE Installation Guide

EQM350

The **balance sensor** is at the bottom of the heating unit. Do not place the heating unit on an uneven surface or on the carpet. The balance sensor may trigger and it may not operate.

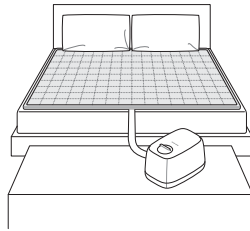
The **timer** is set. It automatically shuts down the system after 15 consecutive hours operation.

- ✔ The water may remain inside the heating unit due to the inspection. Please be assured that is is not a malfunction or used product.
- ✔ Use of clean water (distilled water, purified water, mineral water) is recommended.
- ✔ Do not use underground water, detergent, chemicals, oil or air freshener.
- ✔ Regular use of sterilization mode is recommended for more pleasant use.
- ✔ If the heating unit has not been operated for 90 seconds, it goes into power saving mode. To resume control, touch any button to exit power saving mode.

Product Installation Guide

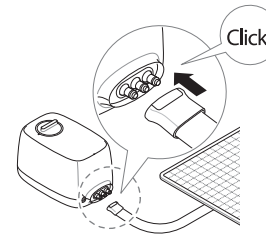
- 1** Put the cover on the pad and select the location for use.

Do not place the heating unit on uneven floors or on carpeted or soft floors.

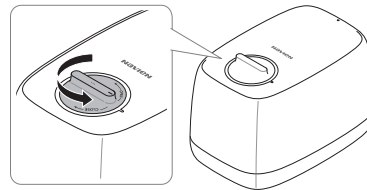


- 2** Connect the hose connector of the mat with the heating unit.

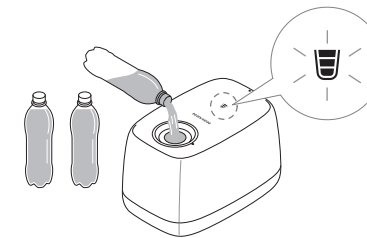
If a stiffness is felt when connecting the hose connector for the first time, softer connection is available with the moisture.



- 4** Open the water inlet cap by turning it counterclockwise.



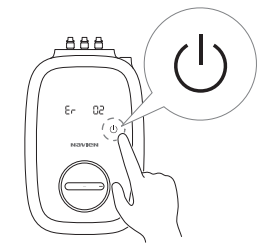
- 5** Slowly fill with water while checking the level indicator lamp.



* The amount of water to be filled is approximately 1,500ml for King size, 1,350ml for Queen size, 1,050ml for Single size.

- 3** Connect the power cord and press the power button to turn on the heating unit.

Water shortage error code (Er-02) will be displayed when turned on for the first time.

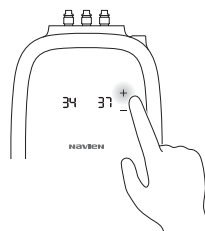


- 6** Set desired temperature to begin use.

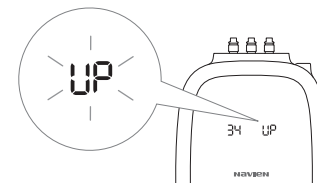


Setting Temperatures over 100°F

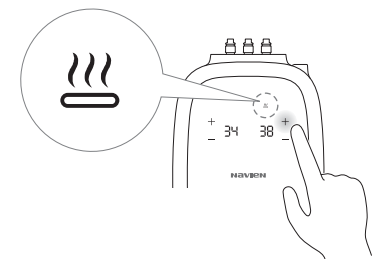
When the "+" button is pressed to set the temperature above 99°F(37°C), "UP" will be displayed.



Release the button and wait for a brief moment, the UP indicator and the high temperature caution lamp will blink. (For about 1.5 seconds)

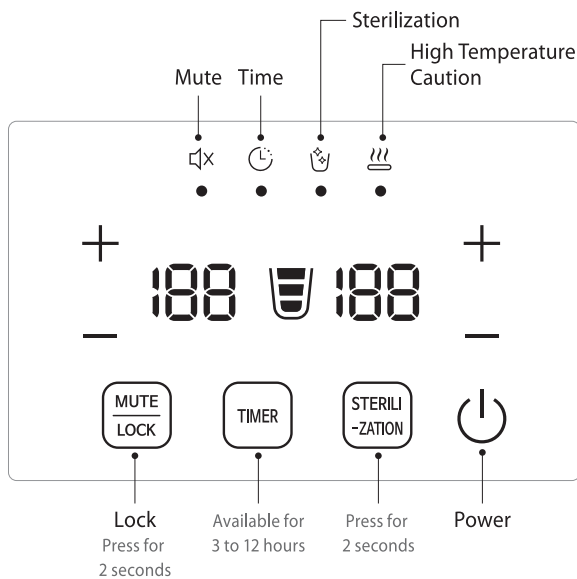


Pressing the + button after the brief moment will allow the temperature to be set above 100°F.



B NAVIEN MATE

Use / Care Guide

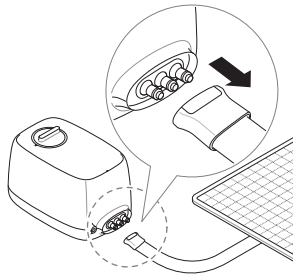


Product Storage

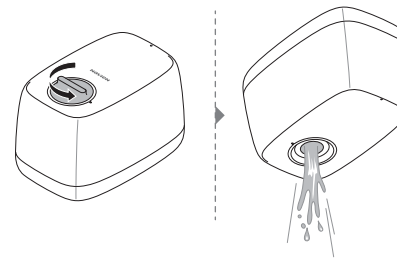
1 How to Drain the Heating Unit

- 1 Remove the hose by pressing the easy connector.

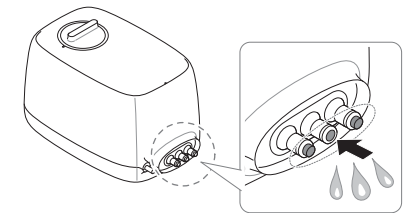
Please make sure that the water in the heating unit and the pad has sufficiently cooled.



- 2 Remove the cap by turning it counterclockwise and tilt the heating unit to remove the water and empty the heating unit.

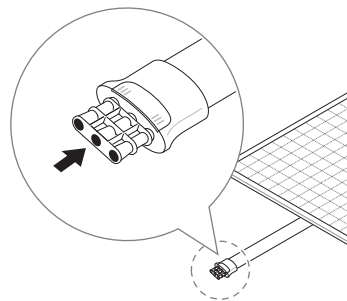


- 3 Press the protruding part of the connector to extract the remaining water.

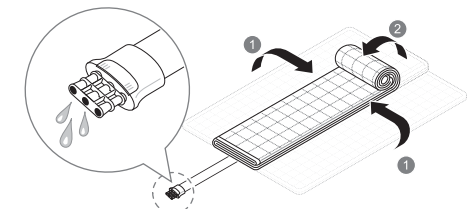
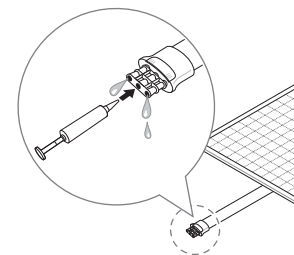


2 How to Drain the Mattress Pad

- 1 Hold the end of the hose and connect the water removal kit provided at the time of purchase.



- 2 Fold the pad and remove the residual water inside. Connect the air pump into the center of the removal kit and pump until no water comes out.



Caution | Make sure that the water has sufficiently cooled before draining to prevent risk of burn.