

ESHINE

USER MANUAL

LED Smart Puck Lighting Kit
Dimmable

Safety guidelines

It is important for you to read and understand this manual. The information it contains relates to protecting YOUR SAFETY and PREVENTING PROBLEMS. The symbols below are used to help you recognize this information.

DANGER: Indicates an imminently hazardous situation, which, if not avoided, may result in death or serious injury and/or property damage.

WARNING: Indicates a potentially hazardous situation, which, if not avoided, could result in death or serious injury and/or property damage.

CAUTION: Indicates a potentially hazardous situation, which, if not avoided, may result in minor or moderate injury and/or property damage.

NOTICE: Used without the safety alert symbol, this indicates a potentially hazardous situation, which, if not avoided, may result in property damage.

WARNING: Used to reduce the risks associated with impact and hazardous voltage, which, if not avoided, could result in death or serious injury and/or property damage:

- Use indoors and in dry locations only; keep all liquids away from the light.
- Avoid putting the light on an uneven surface to prevent toppling or damage.
- Do not alter or modify the light, ground plug, or polarized plug blades.
- Do not use light with other adapters or voltage supplies.
- Plug the light into a grounded, polarized electrical outlet. Contact a qualified electrician if a polarized outlet is not available.
- Do not use the light if the power cord or the enclosure is damaged.
- If an extension cord is used, ensure that it is properly rated for your application.
- Do not attempt to disassemble the light. The product is to be serviced by qualified service personnel only—there are no user-serviceable parts inside.

- Always power off and unplug the light before cleaning.
- Clean the exterior only with a dry, clean cloth. Do not immerse light in water to clean.
- Do not use force when adjusting the light.
- Do not insert objects into the light.
- If any irregularities are detected during use, turn off the switch and unplug the light.

WARNING: To reduce the risks associated with excessive heat and fire, which, if not avoided, could result in death or serious injury and/or property damage:

- Avoid usage in high-temperature areas (104°F/40°C).
- Avoid putting the light next to a heater.
- Lights should not be covered with flammable objects (cloth, paper, etc.).

CAUTION: To reduce the risks associated with environmental contamination, which, if not avoided, could result in minor or moderate injury:

- Dispose of task lights in accordance with applicable local government regulations.

WARNING:

- This device may not cause harmful interference.
- This device must accept any interference received, including interference that may cause undesired operation.

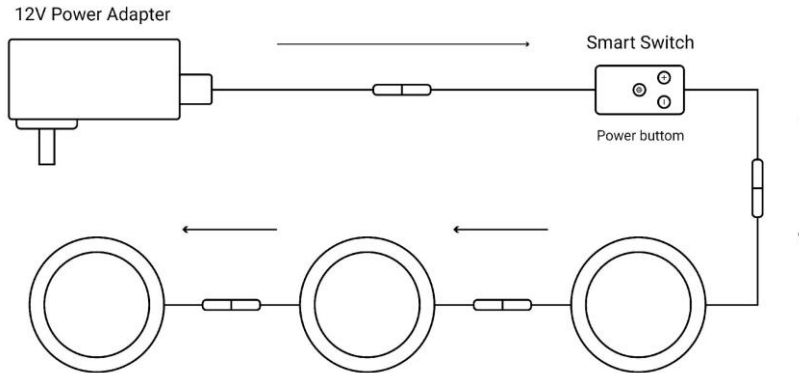
INTENDED USE: EShine® LED Under Cabinet Lights are intended to provide task lighting indoors. Use in any other application has not been evaluated and may lead to unsafe conditions.

The EShine smart puck lighting kit has two operation modes:

- 1) Manual mode
- 2) Smart mode (Compatible with Alexa, Google, and SmartThings)

Manual mode:

Connect the main plug of the 12V power supply to the smart switch and then connect to the lights. To turn all lights on/off by simply clicking on the power button on the switch.



To dim the lights, click the "+" or "-" buttons for the desired brightness. When you turn the lights on or off, the system will remember your last-used brightness level. (If you unplug the lights from the power, the memory will reset.)

Smart Mode:

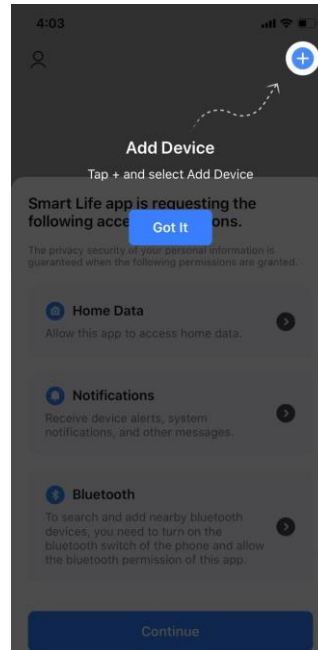
To use smart mode, first connect the smart switch to the application. Press and hold the power button until the blue light starts blinking(long press time> 5seconds).

1. Scan the QR code to download the "Smart Life" App.

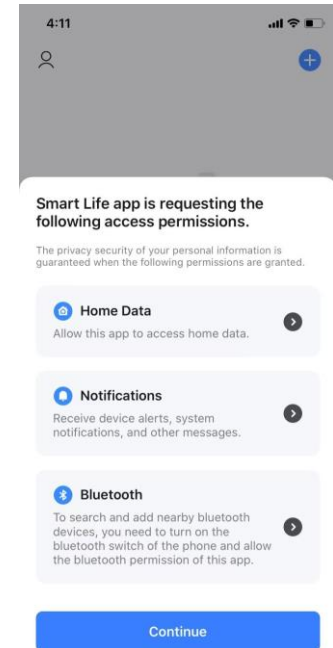


2. Open the app and register an account.

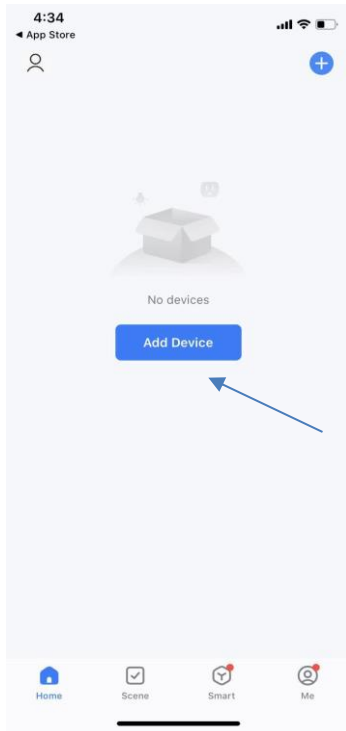
3. Log in after registering the account.



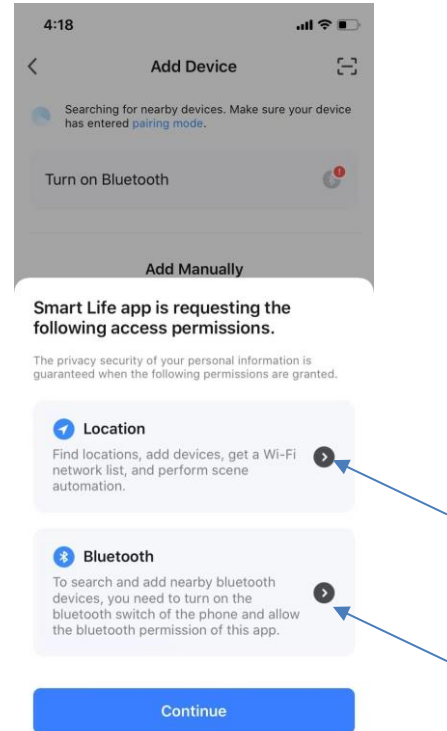
4. Click "Got It," and it will become the interface in below. Then click "Continue."



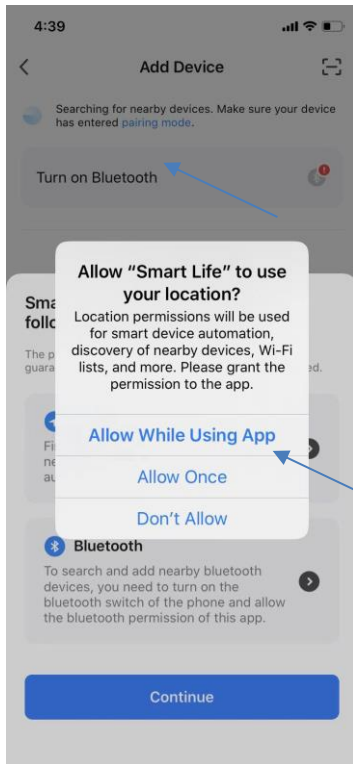
5. Click "Add Device" as below. Please ensure the Wi-Fi network frequency is 2.4GHz.



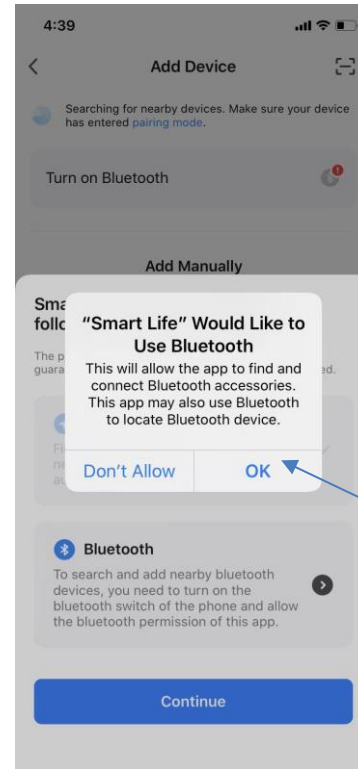
6. Accept below 2 permissions ("Location" and "Bluetooth") to ensure successful pairing for the next step of network configuration



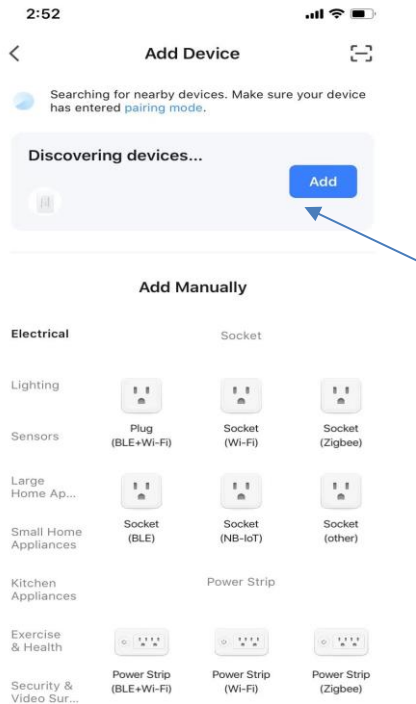
7. Allow “Smart Life” to use your location, please click “Allow While Using App” as below



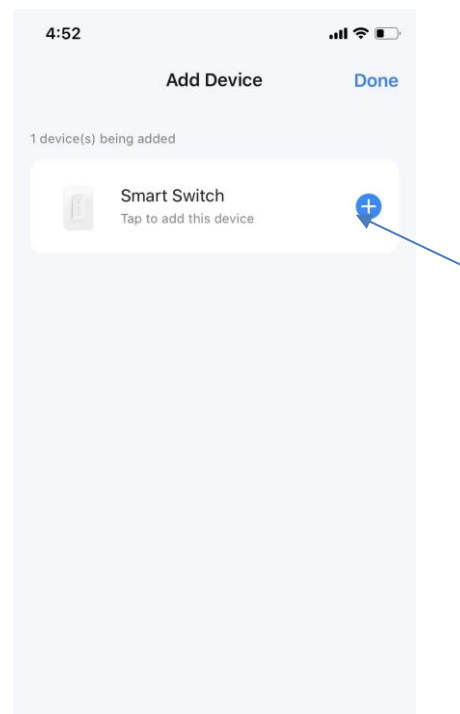
8. Allow “Smart Life” use your Bluetooth. Click “OK” as below



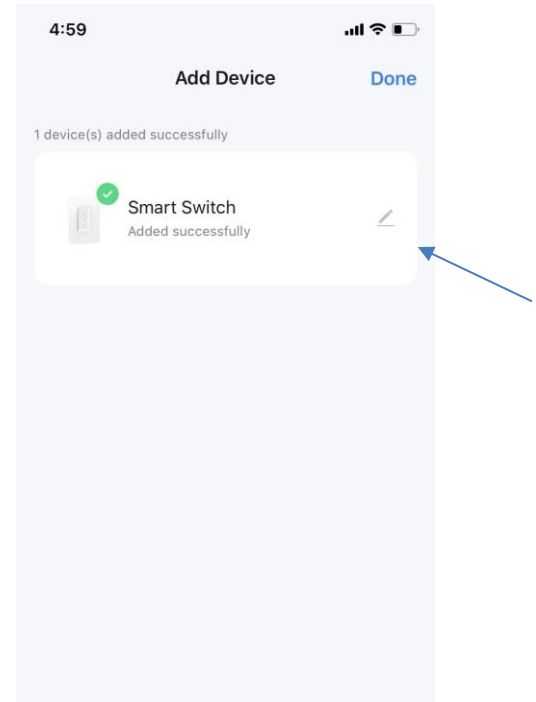
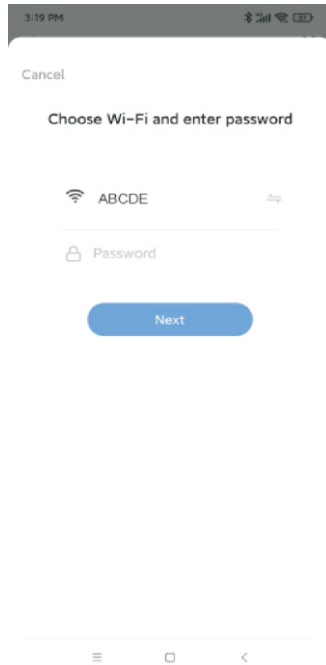
9. “Smart Life” APP will search devices automatically, then click “Add ” button as below.



10. Click “+” button after searched and paired the “Smart Switch” in below

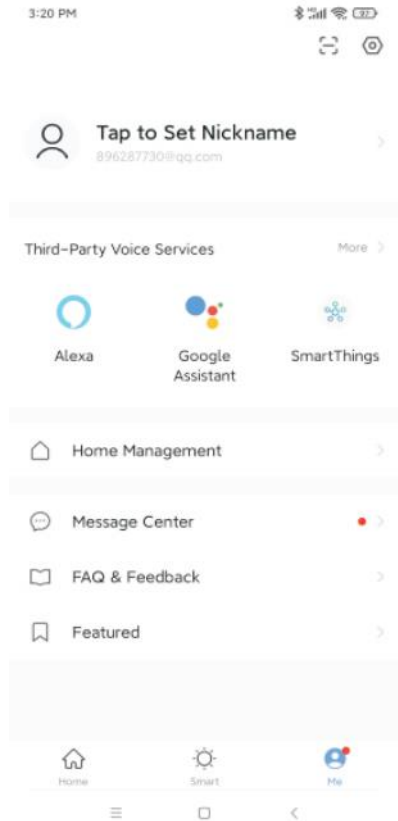


11. Connect to Wi-Fi.



Select your Wi-Fi and enter your password, then click "Next." The product will automatically begin network configuration. It will show right picture after network configuration succeed. And you can revise the nickname follow your requests, like "Cabinet Lights" or "Smart Lights".

Connect to a Smart Home Voice System



Smart Life APP has a built-in smart home quick connection channel. The following conditions are required to use the smart home control method:

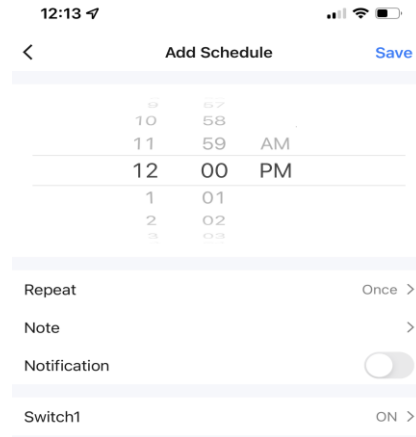
1. Have smart home voice system equipment, such as Echo or Google Home.
2. Register with a corresponding smart home account, such as an Alexa account, a Google account or SmartThings account.

Then select the corresponding system on the APP and follow the process to connect to use.

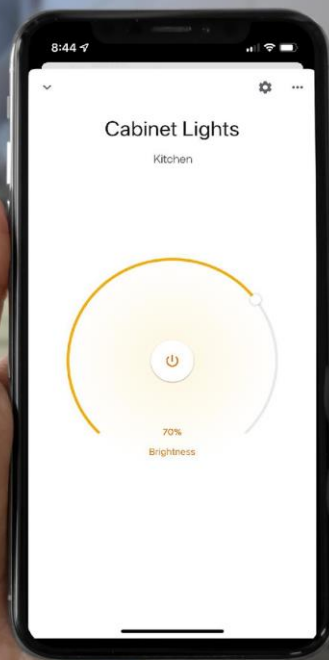
How to Use with Voice Control

Operations	Voice Commands	Alexa App Control
Power Control	"...turn my cabinet lights on." "...turn my cabinet lights off."	YES
Dimming 1%-100%	"...dim my cabinet lights." "...dim my cabinet lights to X%." (1-99%) "...set brightness of cabinets lights to 100%"	YES

Schedules and Timer: You can set a schedule for the light in your home, and it will be turned off regularly after you fall asleep at night, which is more energy-efficient.



"Hey Google, turn my cabinet lights on."



"Hey, Google, dim my cabinet lights to 70%"

Technical Specifications of Kits

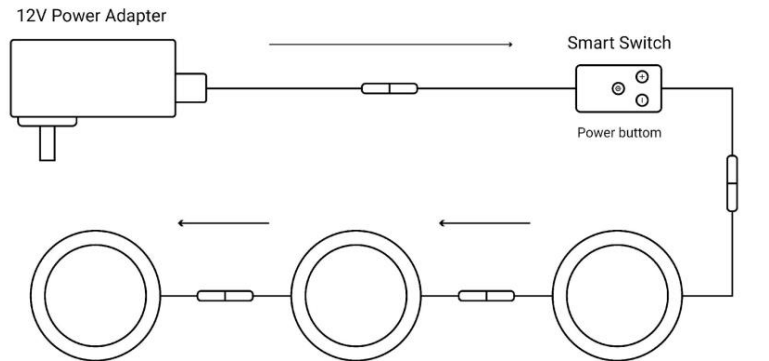
	3-Smart LED Puck Lighting Kit (3 puck 2.36 inch)	6- Smart LED Puck Lighting Kit (6 puck 2.36 inch)	12- Smart LED Puck Lighting Kit (12 puck 2.36 inch)
Brightness	450 lm (3 x 150 lm)	900 lm (6 x 150 lm)	1800 lm (12 x 150 lm)
Angle	120 °	120 °	120 °
Protection	IP20	IP20	IP20
LED Puck Size	2.36 (D) x 0.32 (H) inches	2.36 (D) x 0.32 (H) inches	2.36 (D) x 0.32 (H) inches
Input Voltage	100-240V AC	100-240V AC	100-240V AC
Operating Voltage	12V DC	12V DC	12V DC
Wattage	6 Watt (3x2W)	12 Watt (6 x 2W)	24 Watt (12 x 2W)

Package Contents

	3-Smart LED Puck Lighting Kit (3 puck 2.36 inch)	6- Smart LED Puck Lighting Kit (6 puck 2.36 inch)	12- Smart LED Puck Lighting Kit (12 puck 2.36 inch)
Light Puck	3	6	12
12W Power supply	1	1	0
24W Power supply	0	0	1
3.3ft Interconnect cables	2	5	11
3.3ft male-female extension cable	1	1	1
3M double-sided stickers	3	6	12
Wire clips	15	24	45
Smart switch	1	1	1

Installation guide

Connect the main plug of the 12V power supply to the smart switch and then connect to the lights. (See Pic.1)
You can extend the length between the power supply or smart switch, or between the Smart Switch or LED Lights, by using the MALE- FEMALE connection cable included.

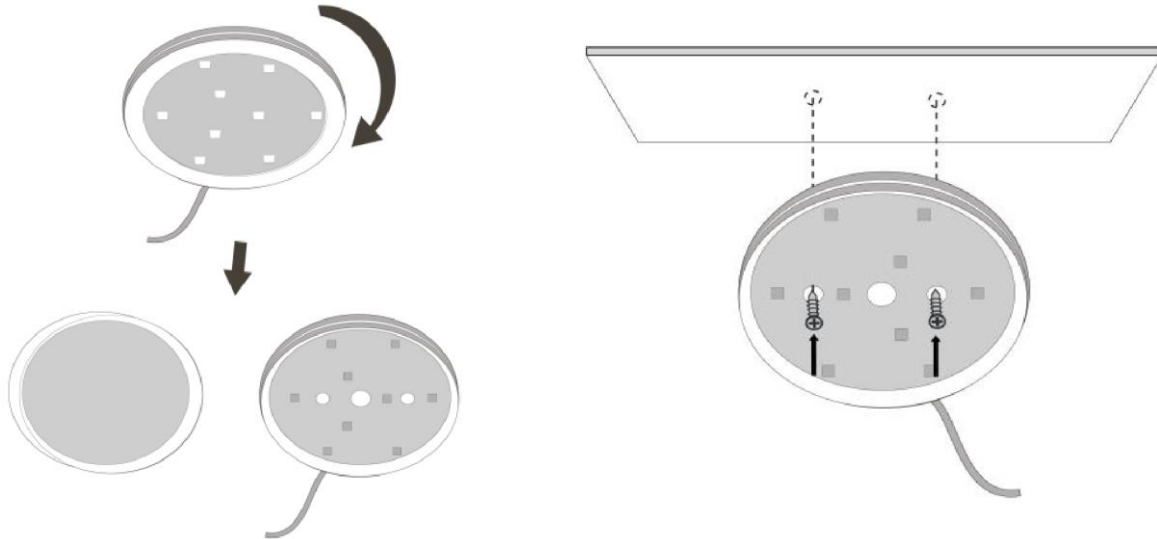


Pic.1

Installation guide

Use screws or 3M double-sided stickers to fasten lights to the installation location.

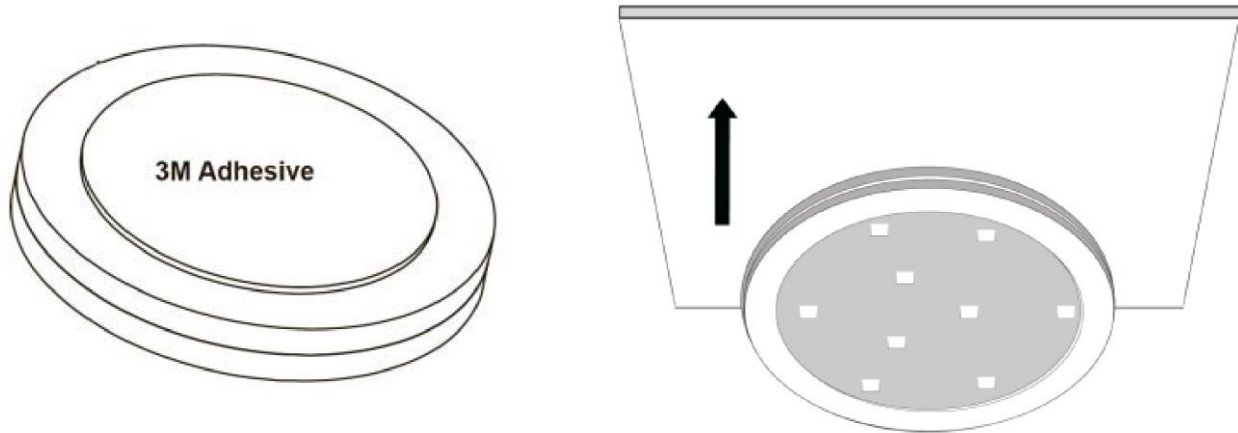
1. To use screws, you need to remove top cover of the light by unscrewing the outer ring of the lampshade and remove lamp shade than pass two screws through the screw holes and then fix the lamp to the installation location(see Pic.2).



Pic.2 Installation with screws

Installation guide

2. You can stick the lights and hand wave sensor switch directly to the installation location via the double sided 3M adhesive tape (see Pic.3).



Pic.3 Installation with adhesive

With the 12V DC power supply included in the kit, you can use additional LED bars based on the information below:

7" bar - 2W+/-10%

12" bar - 3W+/-10%

20" bar - 5W+/-10%

Puck light - 2W+/-10%

Check that the max power supply can handle the specifications listed above.

The power supply comes with a 4.9ft cord.

Connector specification: 3.5mm (Outer Diameter) x 1.35mm (Inner Diameter).

IMPORTANT: Never overload the power supply. Before purchasing, please make sure you have 12V DC compatible LED bars.

Warranty

Your EShine LED Lighting Kit comes with a limited 3-Year warranty.

What does this limited warranty cover?

This limited warranty covers any defects in material or workmanship under normal use during the Warranty Period.

How long does the coverage last?

The Warranty Period for this LED lighting kit is three years from the date of purchase.

What doesn't this limited warranty cover?

This Limited Warranty does not cover any problem that is caused by conditions, malfunctions or damage that is not a result of a defect in material or workmanship.

What do you have to do?

To obtain warranty service, you must first contact us. We will investigate the problem and determine the most appropriate solution for you.

Amazon, Alexa and all related logos are trademarks of Amazon.com

EShine®

Web: www.eshinestore.com

Email: service@eshinestore.com