



The Signature of Quality®

FEDERAL INDUSTRIES

A Standex Company

215 Federal Avenue Belleville
Wisconsin 53508-9201

Phone: 800-356-4206

Fax: 608-424-3234

Email: Geninfo@Federalind.com

Website: Federalind.com

Project Name: _____

AIA #

Item #: _____

Model #: _____ Qty: _____

SIS #

Approval: _____

REFRIGERATED SELF-SERVE HIGH PROFILE SPECIALTY MERCHANDISE

High profile merchandiser that provides solutions for your fresh food merchandising needs.



Shown with options

MODEL	DIMENSIONS (Includes End Panels)
<input type="checkbox"/> RSSM3078SC	30 x 28.75 x 78 (in) 762 x 730 x 1981(mm)

STANDARD FEATURES

Model Features

- Choice of six standard laminates on exterior
- Galvanized steel back
- Stainless steel slanted display deck, black interior
- Front air intake & discharge
- Condenser air filter
- Energy-saving night curtain
- Black end panels with insulated glass panes
- Cord and plug, NEMA 5-20P
- Insulated with high-density urethane foam

Refrigeration

- Condensate pan
- Electronic temperature controls maintain 38°-40°F. Note: Case temperature will vary if the air curtain is disrupted.
- Coated evaporator coil
- Thermometer

Shelving

- Four tiers of adjustable black shelves with 1 1/8" (28mm) price tag molding. Shelves can be flat or slanted downwards at 10°.

Lighting

- LED 3500K top light
- IP66 rated

Agency Approvals

- UL Safety and UL Sanitation listed
- DOE 2017 Compliant

OPTIONAL ACCESSORIES

- Specialty external laminate finish
- White interior (including shelving)
- Stainless steel exterior finish
- Stainless steel interior finish
- Stainless steel shelves
- Reflective end glass
- Additional lighted (LED) shelves
- Removable security cover
- LED lights below shelves
- Recessed caster
- Legs 6" (152mm)
- Skirt with caster or legs
- Condensate pump optional



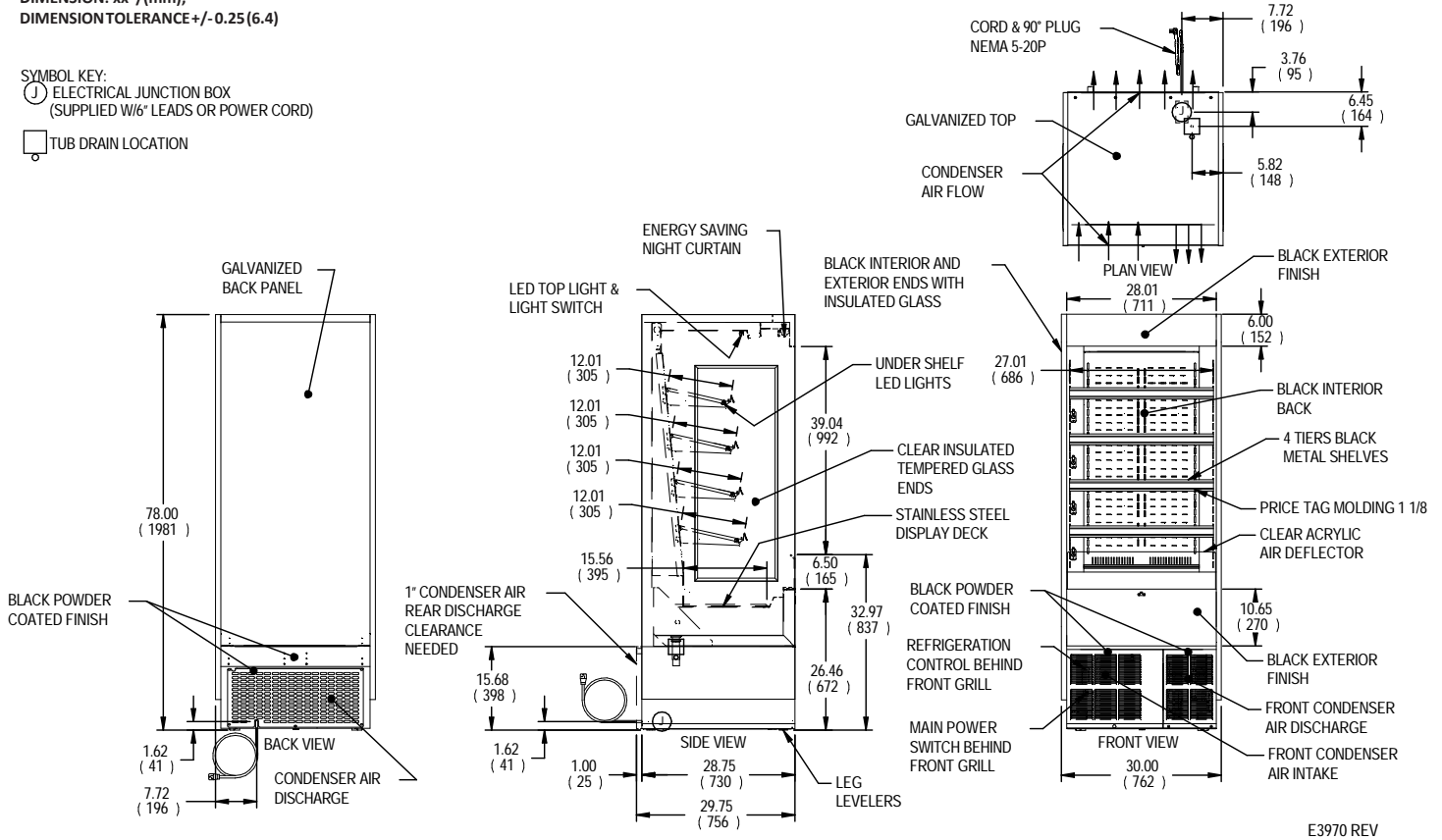
Note: Information is subject to change at any time. Visit www.federalind.com For the most current specs.

AIA #	REFRIGERATED SELF-SERVE HIGH PROFILE SPECIALTY MERCHANDISE
SIS #	Product Specifications

Intended Environment: Type I - Designed to operate in maximum ambient conditions of 75°F [24°C] and 55% relative humidity unless noted otherwise in system information below.		
Zone	Intended product to be displayed	Avg prod temp °F / °C
All	Packaged refrigerated products	38°F / [3.3°C]

DIMENSION: xx"/(mm),
DIMENSION TOLERANCE +/- 0.25 (6.4)

SYMBOL KEY:
 ELECTRICAL JUNCTION BOX (SUPPLIED W/6' LEADS OR POWER CORD)
 TUB DRAIN LOCATION



E3970 REV

MODEL	DIMENSION						SHELVING			INTERIOR VOLUME CU FT	STANDARD CONNECTION CORD & PLUG			REFRIGERANT	C.U. HP	SHIP WEIGHT	
	L	D	H	# OF TIERS	D	L	120/60/1 2-WIRE + GROUND				AMPS	MAX FUSE SIZE	NEMA CORD & PLUG			LBS	KILO
	in	in	in		in	in											
	mm	mm	mm		mm	mm											
RSSM3078	30.00	28.75	78.00	4	12	27	13.84	16	20	NEMA 5-20P 90° PLUG	R449A	1/2	600 LBS	272 KILO			
	762	730	1981		305	686											

- Due to continuing engineering improvements, specifications are subject to change without notice.
- Condensate pump drain hose must be routed to a remote drain at installation.



FEDERAL INDUSTRIES
 A Standex Company
 215 Federal Avenue Belleville, Wisconsin 53508-9201

Phone: 800-356-4206
Fax: 608-424-3234
Email: Geninfo@Federalind.com
Website: Federalind.com