



The Signature of Quality

FEDERAL INDUSTRIES

A Standex Company

215 Federal Avenue  
Belleville, Wisconsin 53508-9201

Phone: 800-356-4206

Fax: 608-424-3234

Email: Geninfo@Federalind.com

Website: Federalind.com

Project Name: \_\_\_\_\_

Item #: \_\_\_\_\_

Model #: \_\_\_\_\_ Qty: \_\_\_\_\_

Approval: \_\_\_\_\_

AIA #

SIS #

Refrigerated Self-Serve Slim-Line High Profile Specialty Merchandiser – 60”H X 24” D

Designed with impulse sales in mind. Get maximum return from an attention-grabbing merchandiser and increase profits.



Model RSSL478SC Shown

MODEL	DIMENSIONS (Includes End Panels)
<input type="checkbox"/> RSSL360SC	36 x 24 x 60(in) 914 x 610 x 1530 (mm)
<input type="checkbox"/> RSSL460SC	47.25 x 24 x 60 (in) 1200 x 610 x 1530 (mm)
<input type="checkbox"/> RSSL560SC	59.25 x 24 x 60 (in) 1505 x 610 x 1530 (mm)
<input type="checkbox"/> RSSL660SC	71.25 x 24 x 60 (in) 1810 x 607 x 1530 (mm)

STANDARD FEATURES

Model Features

- Welded powder coated steel base fabrication
- Choice of six standard laminates on exterior
- Black metal front grill and galvanized steel back
- Silver Trim
- Stainless steel display deck, glass and black interior ends, black interior back panel
- Moisture resistant end panel construction with field replaceable tempered thermo-pane glass
- Front air intake and discharge
- Energy saving night curtain
- Cord and plug, self-contained only
- Adjustable Leg Levelers

Refrigeration

- Electronic temperature control with on demand defrost
- PTC Condensate heater provided for a totally self-contained system (3.3°-4.4°C)  
Note: Case temperature will vary if the air curtain is disrupted.
- Insulated with high-density urethane foam
- Thermometer
- Refrigeration controls maintain 38°-40°F
- R449a refrigerant (R448a/R449a in Remote Applications)

Shelving

- Two tiers of adjustable black metal shelves with price tag molding. Shelves can be flat or slanted downwards at 10°

Lighting

- 3500K LED top light
- DLC certified, IP 65 rated

Agency Approvals

- UL, C-UL and UL Sanitation listed to NSF-7, Type I conditions
- DOE 2017 compliant

OPTIONAL ACCESSORIES

- Special exterior laminate finish
- Stainless steel exterior finish
- White interior (Including shelving)
- Additional lighted (LED) shelf
- Deli meat pegs
- Security night cover
- LED lights below shelves
- 2 1/2" (63.5mm) casters (Self-contained models only)
- Legs 6" (152mm)
- Skirt with casters or legs
- Condensate pump
- Condensate evaporator assembly
- (Field install) (Separate 120V, 20A circuit required) (Remote only)
- Remote refrigeration with condensate pump (EEV included)

\*Additional options available on the website and price list.



WARRANTY\*  
One year Parts and Labor  
2nd thru 5th year part only  
service compressor  
(U.S.A. and Canada)

Note: Information is subject to change at any time. Visit [www.federalind.com](http://www.federalind.com) for the most current specs.

<b>AIA #</b>	<b>Refrigerated Self-Serve Slim-Line High Profile Specialty Merchandiser – 60”H X 24” D</b>
<b>SIS #</b>	<b>Product Specifications</b>

Intended Environment: Type I (Self Contained) - Designed to operate in maximum ambient conditions of 75°F (24°C) and 55% relative humidity. Type II (Remote) - Designed to operate in maximum ambient conditions of 80°F (24°C) and 55% relative humidity

Zone	Intended Product To Be Displayed	Avg prod temp °F / °C
All	Packaged Refrigerated Products	38 °F / (3.3 °C)

**DIMENSION: xx"/(mm)**

**DIMENSION TOLERANCE +/- 0.25 (6.4)**

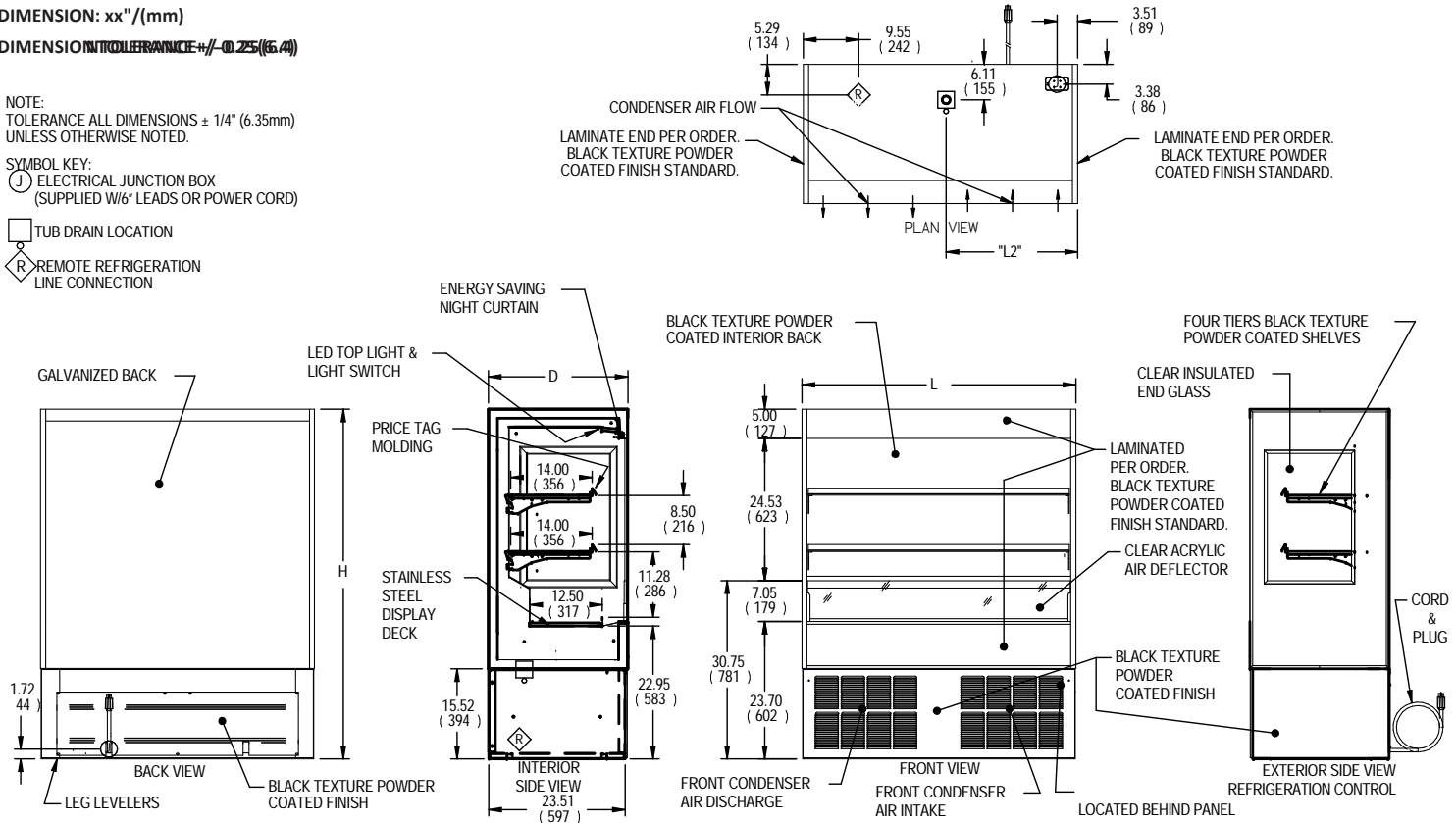
NOTE:  
TOLERANCE ALL DIMENSIONS ± 1/4" (6.35mm) UNLESS OTHERWISE NOTED.

SYMBOL KEY:

Ⓝ ELECTRICAL JUNCTION BOX (SUPPLIED W/6' LEADS OR POWER CORD)

Ⓜ TUB DRAIN LOCATION

Ⓡ REMOTE REFRIGERATION LINE CONNECTION



E3725-10 REV -

MODEL	DIMENSION						SHELVING		INTERIOR VOLUME CU FT	SELF CONTAINED				REMOTE						
	DIMENSION			SHELVING		STANDARD NEMA CORD & PLUG				REF	C.U. HP	SHIP WT	PERMANENT CONNECT			SHIP WT				
	L	D	H	# OF TIERS	D	L	2-WIRE + GROUND						2-WIRE + GROUND							
	in	in	in		in	in	ELECTRICAL	AMPS					MAX FUSE SIZE	NEMA CORD & PLUG	AMPS		ELECTRICAL	MAX FUSE SIZE		
mm	mm	mm		mm	mm															
RSSL360	36.00	24.00	60.25	2	14.00	34.00	11.07	120/60/1	16.0	20	NEMA 5-20P	R449a	3/4	795 LBS	6.4	120/60/1	15	R449a	5400	740 LBS
	914	610	1530		356	864								361 KILO						336 KILO
RSSL460	47.25	24.00	60.25	2	14.00	45.00	14.50	120/60/1	16.0	20	NEMA 5-20P	R449a	3/4	885 LBS	7.6	120/60/1	15	R449a	7500	800 LBS
	1200	610	1530		356	1143								401 KILO						363 KILO
RSSL560	59.25	24.00	60.25	2	14.00	57.00	18.22	208-240/60/1	15.0	30	NEMA 6-20P	R449a	1	1120 LBS	7.3	208-240/60/1	15	R449a	9000	1015 LBS
	1505	610	1530		356	1448								508 KILO						460 KILO
RSSL660	71.25	24.00	60.25	2	14.00	69.00	21.91	208-240/60/1	15.0	30	NEMA 6-20P	R449a	1	1180 LBS	7.3	208-240/60/1	15	R449a	10500	1075 LBS
	1810	610	1530		356	1753								535 KILO						488 KILO

- Due to continuing engineering improvements, specifications are subject to change without notice.
- Case temperature will vary if the air curtain is disrupted.



**FEDERAL INDUSTRIES**  
A Standex Company  
215 Federal Avenue Belleville, Wisconsin 53508-9201

**Phone:** 800-356-4206  
**Fax:** 608-424-3234  
**Email:** Geninfo@Federalind.com  
**Website:** Federalind.com