



4184 E. Conant St.  
 Long Beach, CA 90808  
 Tel. 800-500-3519  
 Fax. 310-900-1066  
 www.turboairinc.com

|                 |       |
|-----------------|-------|
| Project :       |       |
| Model # :       |       |
| Item # :        | Qty : |
| Available W/H : |       |
| Approval :      |       |

# Compartment Sinks (Two Drain Boards)

**HIGH QUALITY 304 STAINLESS STEEL**

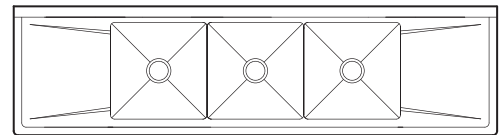
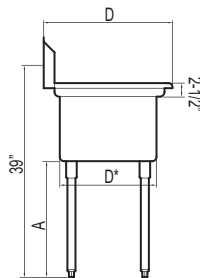
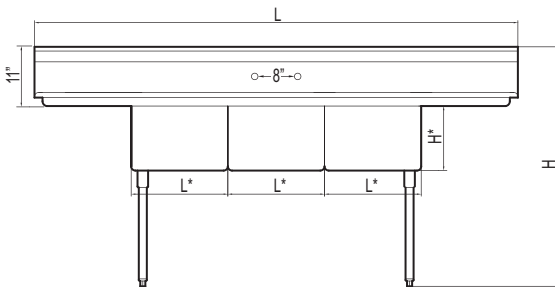
**Model : TSA-3-12-D1  
 TSA-3-14-D1  
 TSA-3-14-D2  
 TSA-3-D1  
 TSB-3-D2**



\* Faucet sold separately

## ≡ FEATURES & BENEFITS ≡

- Entire assembly is fused, shielded and polished providing a one-piece seamless sink unit
- Welded areas are high-speed belt blended to match adjacent surfaces with the continuity of a satin finish
- All sink compartments are covered on a full 5/8" radius and constructed using state of the art seamless welding techniques
- Die-stamped creased drain boards for positive drainage
- Swirl away bowl drainage
- Galvanized legs and gussets are standard on all models
- Our strainers are built with brass nuts instead of aluminum (standard)
- Adjustable ABS bullet feet
- Crating service available
- Stainless steel legs available (optional)



(unit : inch)

| Model       | Ga. | Bowl Size (L* x D* x H*) | Length | Depth | Height | Leg(A) | # of Faucet Accepted | Net Weight* (lbs.) |
|-------------|-----|--------------------------|--------|-------|--------|--------|----------------------|--------------------|
| TSA-3-12-D1 | 18  | 18 x 18 x 12             | 90     | 24    | 44 1/2 | 21 1/2 | 1                    | 84                 |
| TSA-3-14-D1 | 18  | 18 x 18 x 14             | 90     | 24    | 44 1/2 | 19 1/2 | 1                    | 88                 |
| TSA-3-14-D2 | 18  | 18 x 18 x 14             | 102    | 24    | 44 1/2 | 19 1/2 | 1                    | 94                 |
| TSA-3-D1    | 18  | 18 x 18 x 11             | 90     | 24    | 44 1/2 | 22 1/2 | 1                    | 82                 |
| TSB-3-D2    | 16  | 24 x 24 x 14             | 120    | 30    | 44 1/2 | 19 1/2 | 2                    | 161                |