



Your Solutions Partner

Specifications

F.O.B Sedalia, Missouri 65301



HB3-1H2C

OPTIONS:

- 8" deep liner in lieu of 5"
- Internal locking device
- 220v - 50 Hz compressor
- Condensate evaporator
- Three phase wiring
- 8' or 10' cord and plug in lieu of 6'
- 1-color laminate on body/second color laminate on tray slide
- Laminate finish other than standard eight (8) finishes
- Heat/lights in canopy
- Kickplates (stainless) (painted) (laminate to match body)
- Heritage laminated trayslides
- End shelf
- Foodshields
- Trayslides
- Bread and cheese board
- False bottom for cold pan
- Legs in lieu of casters

AGENCY LISTING:



DUKE MANUFACTURING CO.
2305 N. Broadway
St. Louis, MO 63102

800.735.3853 Toll Free
314.231.5074 Fax
www.dukemfg.com

SS-1013 Heritage Hot-Cold 5 Inch Deep

Approval Stamp(s):

PRODUCT INFORMATION:

PROJECT: _____

ITEM: _____

QUANTITY: _____

MODEL:

Heritage Buffet - Hot/Cold Cold Pan - 5" Deep

- | | |
|--|--|
| <input type="checkbox"/> HB3-2H1C 2 hot/1 cold | <input type="checkbox"/> HB4-1H3C 1 hot/3 cold |
| <input type="checkbox"/> HB3-1H2C 1 hot/2 cold | <input type="checkbox"/> HB4-3H1C 3 hot/1 cold |
| <input type="checkbox"/> HB5-3H2C 3 hot/2 cold | <input type="checkbox"/> HB4-2H2C 2 hot/2 cold |
| <input type="checkbox"/> HB5-2H3C 2 hot/3 cold | <input type="checkbox"/> HB5-1H4C 1 hot/4 cold |

TOP:

- 16 gauge, 300 Series stainless steel
- Flanged down 2" on all four (4) sides
- Independently operated hot food wells
- Single control mechanically cooled ice pan sections

BODY:

- Heavy gauge paint grip steel
- Laminate patterns: Available upon request
- Stainless steel trim strips on corners
- Flanged and channeled edges for strength
- Welded together with reinforcements
- Mounted on NSF listed 5" diameter swivel casters, two with locks, all non-marking polyurethane tires

HOT FOOD SECTION:

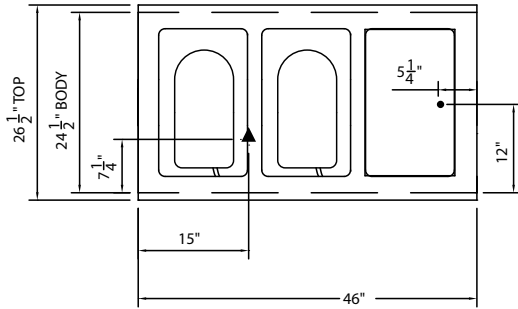
- Stainless steel liners, 12" x 20", insulated with fiberglass
- Each section to have 500 or 750 watt electric exposed element
- Individual infinite controls
- 6' cord and plug
- Spillage pans included, aluminum

MECHANICALLY ASSISTED ICE PAN SECTION:

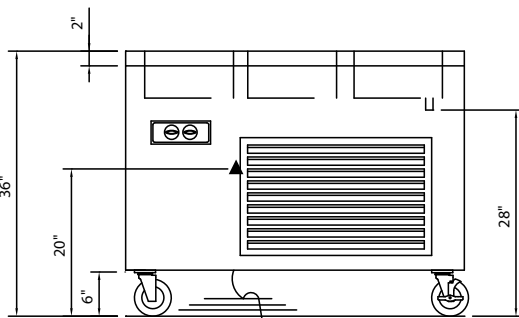
- 18 gauge, 300 Series stainless steel liner
- 12-1/16" x 20-1/16" die stamped openings - 5" deep
- Insulated on all four sides and bottom
- 1" cast brass drain and plug
- Refrigerant coils, controls and compressor compartment - R134A

HERITAGE®

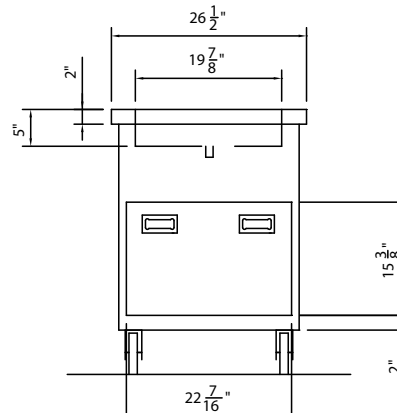
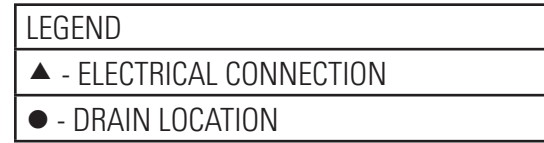
Heritage® Buffet - Hot/Cold Cold Pan - 5" Deep



TOP VIEW



FRONT VIEW



RIGHT SIDE VIEW

DIMENSIONS: All Units 26-1/2 (67.3 cm) Wide & 36" (91.4 cm Tall)

FREIGHT CLASS: 150

| Model | Length | | Cube ft. crated | Weight | | Model | Length | | Cube ft. crated | Weight | |
|----------|--------|-------|-----------------|--------|-------|----------|--------|-------|-----------------|--------|-------|
| | in. | cm | | lbs. | kg | | in. | cm | | lbs. | kg |
| HB3-2H1C | 46 | 116.8 | 36.0 | 432 | 196.4 | HB4-1H3C | 60 | 152.4 | 45.7 | 570 | 259.1 |
| HB3-1H2C | 46 | 116.8 | 36.0 | 432 | 196.4 | HB5-3H2C | 74 | 188.0 | 55.4 | 745 | 338.6 |
| HB4-2H2C | 60 | 152.4 | 45.7 | 570 | 259.1 | HB5-2H3C | 74 | 188.0 | 55.4 | 745 | 338.6 |
| HB4-3H1C | 60 | 152.4 | 45.7 | 570 | 259.1 | HB5-1H4C | 74 | 188.0 | 55.4 | 745 | 338.6 |

ELECTRICAL SPECIFICATIONS:

| Model | HP | 120 volt - 500 watt elements | | | 120/208 volt - 750 watt elements | | | 120/240 volt - 750 watt elements | | |
|----------|-----|------------------------------|------|-------|----------------------------------|------|--------|----------------------------------|------|--------|
| | | watts | amps | NEMA | watts | amps | NEMA | watts | amps | NEMA |
| HB3-2H1C | 1/5 | 1600 | 13.3 | 5-15 | 2100 | 10.1 | L14-30 | 2100 | 8.8 | L14-30 |
| HB3-1H2C | 1/5 | 1100 | 9.2 | 5-15 | 1350 | 6.3 | L14-30 | 1350 | 5.8 | L14-30 |
| HB4-2H2C | 1/5 | 1600 | 13.3 | 5-15 | 2100 | 9.9 | L14-30 | 2100 | 9.0 | L14-30 |
| HB4-3H1C | 1/5 | 2100 | 17.5 | L5-30 | 2850 | 13.5 | L14-30 | 2850 | 12.1 | L14-30 |
| HB4-1H3C | 1/5 | 1100 | 9.2 | 5-15 | 1350 | 6.3 | L14-30 | 1350 | 5.8 | L14-30 |
| HB5-3H2C | 1/5 | 2150 | 17.5 | L5-30 | 2900 | 13.5 | L14-30 | 2900 | 12.1 | L14-30 |
| HB5-2H3C | 1/5 | 1650 | 13.4 | 5-15 | 2150 | 9.9 | L14-30 | 2150 | 9.0 | L14-30 |
| HB5-1H4C | 1/4 | 1280 | 10.7 | 5-15 | 1530 | 9.6 | L14-30 | 1530 | 9.1 | L14-30 |

DUKE MANUFACTURING CO.

2305 N. Broadway
St. Louis, MO 63102

800.735.3853 Toll Free
314.231.1130 In Missouri
314.231.5074 Fax
www.dukemfg.com



Specification subject to change

Printed in U.S.A
© 2018, Duke Manufacturing Co.