



# Specifications

F.O.B Sedalia, Missouri 65301



DPAH-1H2C

### OPTIONS:

- False bottom
- Hot food style top
- Tray shelves
- Fluorescent lights
- Incandescent bullet lights
- Adapter bars
- Spillage pans
- Adapter plates
- Legs in lieu of casters
- Body latches
- Tray shelf on end

### AGENCY LISTINGS:



**DUKE MANUFACTURING CO.**  
 2305 N. Broadway  
 St. Louis, MO 63102

**800.735.3853 Toll Free**  
**314.231.5074 Fax**  
**www.dukemfg.com**

SS-DM-00040-EMB-02

### Approval Stamp(s):

### PRODUCT INFORMATION:

PROJECT: \_\_\_\_\_

ITEM: \_\_\_\_\_

QUANTITY: \_\_\_\_\_

MODEL:

### Econo Mate™ Buffet Units - Hot/Cold

- DPAH-1H2C/OPAH-1H2C** 1 hot food well/2 cold pan wells
- DPAH-1H3C/OPAH-1H3C** 1 hot food well/3 cold pan wells
- DPAH-2H2C/OPAH-2H2C** 2 hot food wells/2 cold pan wells
- TAH-1H2C** Table Top - 1 hot food well/2 cold pan wells
- TAH-1H3C** Table Top - 1 hot food well/3 cold pan wells
- TAH-2H2C** Table Top - 2 hot food wells/2 cold pan wells

### BODY:

- Heavy gauge paint grip steel
- Choice of (12) powder coat paint colors (must choose one)
  - #217105 - Bright White
  - #217150 - Orange Red
  - #217107 - Hollyberry Red
  - #217127 - Fence Green
  - #217102 - Duke Silver
  - #217101 - Semi Gloss Black
  - #217103 - Natural Almond
  - #217154 - Racing Red
  - #217120 - Sky Blue
  - #217152 - Stone Gray
  - #217113 - Brown Kickplate
  - #217125 - Textured Black
- Heavy gauge; 300 Series stainless steel top
- Clear plexiglass canopy, with black powder coat steel brackets with end enclosures

### BASES:

- Choice of
  - Open base - **O**
  - Closed base - **D**
  - Table Top - **T**
- 5" NSF listed black swivel casters, 2 with locks

### HEAT COMPARTMENT:

- 12" x 20" top opening
- Insulation on sides, ends and bottom of 8" compartment
- Infinite switch controls exposed electric element
- Six foot cord and plug

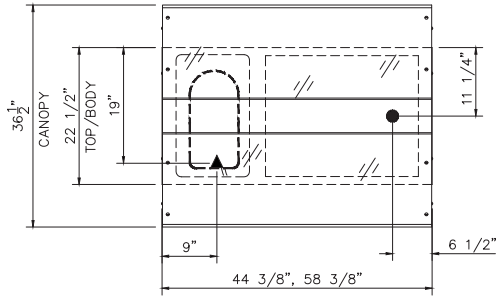
### ICE COOLED COLD PAN COMPARTMENT:

- 5" deep liner, sloping to 1" brass drain and plug
- Fully insulated stainless steel pan
- Width of 19-7/8"

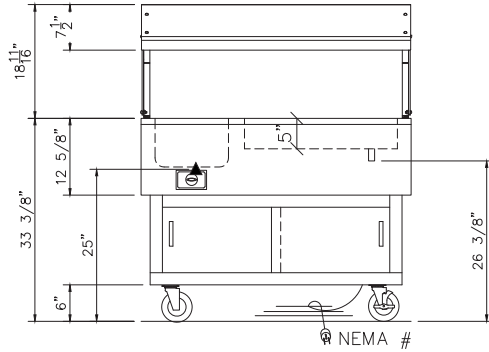
### SHORT FORM SPECIFICATIONS:

**Duke Econo Mate Buffet Units - Hot/Cold.** Portable Buffet with heavy gauge painted steel bodies, open or closed style, with 300 series stainless steel heavy gauge tops, sectional 5"D ice cooled s/s cold pans w/ drain, hot wells w/ infinite switches, enclosed steel base w/powder coat finish & sliding doors, clear acrylic canopy, 5" NSF approved black casters, 2 w/ locks, 6' cord & plug. Table top models available

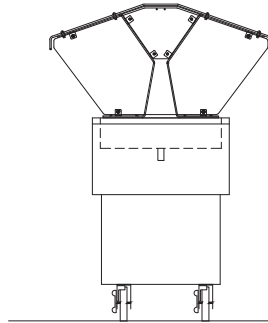
# Econo-Mate<sup>®</sup>



TOP VIEW



FRONT VIEW



SIDE VIEW

## MODEL: Econo Mate Buffet Units

- DPAH-1H2C/OPAH-1H2C** 1 hot food well/ 2 cold pan wells
- DPAH-1H3C/OPAH-1H3C** 1 hot food well/ 3 cold pan wells
- DPAH-2H2C/OPAH-2H2C** 2 hot food wells/ 2 cold pan wells
- TAH-1H2C** Table Top - 1 hot food well/ 2 cold pan wells
- TAH-1H3C** Table Top - 1 hot food well/ 3 cold pan wells
- TAH-2H2C** Table Top - 2 hot food wells/ 2 cold pan wells

LEGEND	
▲	- ELECTRICAL CONNECTION
●	- DRAIN LOCATION
When ordering storage bases, precede model number with "O" for Open Base or "D" for closed base with doors. Example: <b>OPAH-2-BC</b> for open base unit.	

**DIMENSIONS:**

Portable Hot/Cold Units - All units 22-1/2" (57.2 cm) wide & 33-3/8" (84.8 cm) high

FREIGHT CLASS: 100

Model	Cold Pan Liner Dimensions								Hot Food Well		Weight	
	Length		Length		Width		Depth		Hot Food Wells	Cube ft. Crated	lbs.	kg
	in.	cm	in.	cm.	in.	cm	in.	cm				
<b>DPAH-1H2C/OPAH-1H2C</b>	44-3/8	112.8	26	66.0	19-7/8	50.6	5	12.7	1	32.0	246/242	111.8/110.0
<b>DPAH-1H3C/OPAH-1H3C</b>	58-3/8	148.3	40	101.6	19-7/8	50.6	5	12.7	1	40.9	303/299	137.7/135.9
<b>DPAH-2H2C/OPAH-2H2C</b>	58-3/8	148.3	26	66.0	19-7/8	50.6	5	12.7	2	40.9	303/299	137.7/135.9

Table Top Hot/Cold Units - All units 22-1/2" (57.2 cm) wide & 13-5/8" (34.7 cm) high

FREIGHT CLASS: 100

Model	Cold Pan Liner Dimensions								Hot Food Well		Weight	
	Length		Length		Width		Depth		Hot Food Wells	Cube ft. Crated	lbs.	kg
	in.	cm	in.	cm.	in.	cm	in.	cm				
<b>TAH-1H2C</b>	44-3/8	112.8	26	66.0	19-7/8	50.6	5	12.7	1	16.7	198	90.0
<b>TAH-1H3C</b>	58-3/8	148.3	40	101.6	19-7/8	50.6	5	12.7	1	21.4	252	114.6
<b>TAH-2H2C</b>	58-3/8	148.3	26	66.0	19-7/8	50.6	5	12.7	2	21.4	257	116.8

**ELECTRICAL SPECIFICATIONS:**

Model	120 Volt			208 Volt			240 Volt		
	Watts	Amps	NEMA	Watts	Amps	NEMA	Watts	Amps	NEMA
<b>PAH-1H2C/TAH-1H2C</b>	500	4.2	5-15	750	3.6	6-20	750	3.1	6-20
<b>PAH-1H3C/TAH-1H3C</b>	500	4.2	5-15	750	3.6	6-20	750	3.1	6-20
<b>PAH-2H2C/TAH-2H2C</b>	1000	8.3	5-15	1500	7.2	6-20	1500	6.2	6-20

**DUKE MANUFACTURING CO.**

2305 N. Broadway  
St. Louis, MO 63102

800.735.3853 Toll Free  
800.231.1130 In Missouri  
314.231.5074 Fax  
www.dukemfg.com

