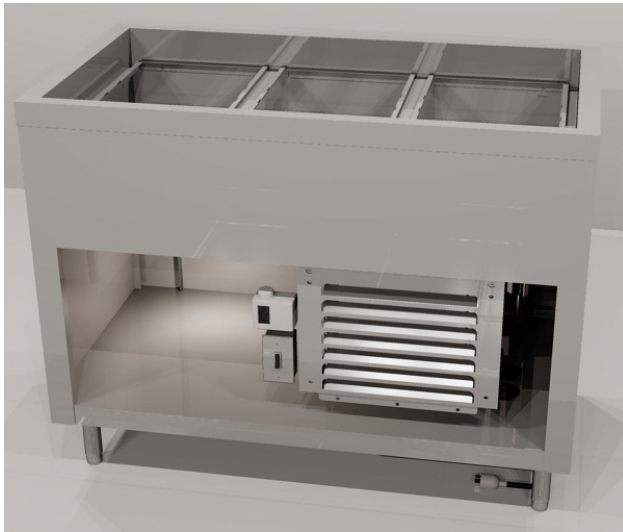




Your Solutions Partner

# Specifications

F.O.B. Sedalia, Missouri 65301



315-25-N7 Shown with optional 3 bar tray slide

### OPTIONS:

- 10" deep pan liner
- Sliding doors with compressor compartment
- Door locks
- Condensate evaporator
- Designer Foodshields
- Trayslides
- Adapter bars
- Adapter panels
- Stainless steel carving boards
- Wood carving boards
- Kick plates
- 5" casters, 2 swivel w/locks, or 4/locks
- Stainless steel dish shelf
- Drop brackets on tray slide
- False bottom - perforated, stainless
- Veneered plastic laminate panels on body
- Special powder coat painted body
- Body latches - 14695

**Approval Stamp(s):**

### PRODUCT INFORMATION:

PROJECT: \_\_\_\_\_

ITEM: \_\_\_\_\_

QUANTITY: \_\_\_\_\_

### MODEL:

AeroServ Serving Systems  
 Cold Pan Units - Mechanically Cooled  
 Meets NSF Standard 7

- 315-25-N7 46" long unit/ 42-1/2" long pan
- 316-25-N7 60" long unit/56-1/2" long pan
- 327-25-N7 74" long unit/70-1/2" long pan

### BODY:

- 20 gauge, 300 Series stainless steel
- Cutout, flanged down & attached to liner of cold pan
- Flanged or channeled edges
- Welded together with local reinforcements
- Compressor compartment with removable louvered grille
- Mounted on 6" stainless steel legs with adjustable feet
- Stainless steel
- Paint grip
- Choice of available powder coat colors

### LINER:

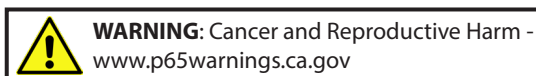
- 18 gauge, 300 Series stainless steel - 8" deep, 21-3/4" wide
- Insulated on all four sides and bottom
- 1" cast brass drain and plug
- Condensing unit, refrigerant coil, controls, electric cord and plug - NEMA 5-15,
- R448a Refrigerant
- Food pans recessed 3" below top on removable stainless brackets

### Certifications:



UL/ANSI NSF4

Specification subject to change



DUKE MANUFACTURING CO.

2305 N. Broadway

St. Louis, MO 63102

800.735.3853 Toll Free

314.231.5074 Fax

www.dukemfg.com

SS-1083 AeroServ Mech Cooled NSF7

AEROSERV - SERVING SYSTEMS - COLD PAN UNIT - MECHANICALLY COOLED-N7

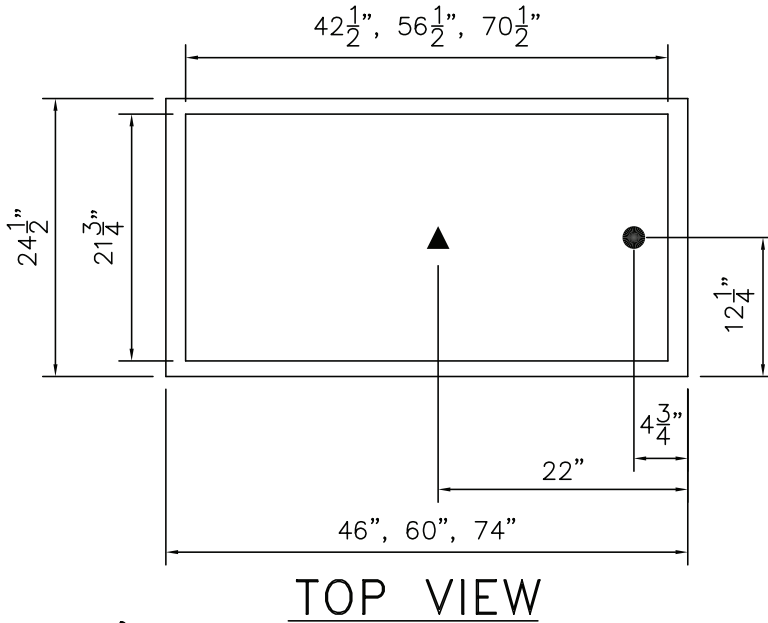
Catalog No. ASC-MECHCOLDN7

A.I.A. File No. 35-C-13

REV C 09/25/2019

# AeroServ

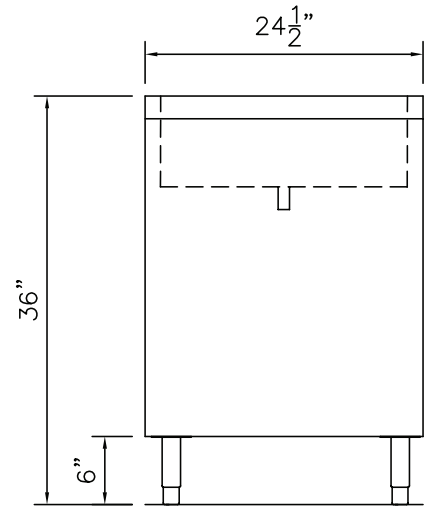
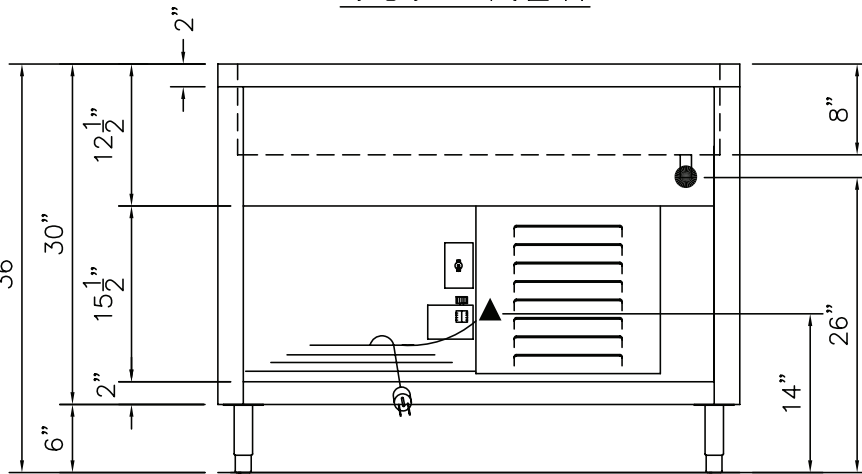
## SERVING SYSTEMS Cold Pan Units - Mechanically Cooled Meets NSF Standard 7



LEGEND	
▲	ELECTRIC CONNECTION POINT SINGLE PHASE
●	DRAIN LOCATION

**ELECTRICAL SPECIFICATIONS**

Model	120 Volt		HP
	Amps	NEMA	
<b>315-25-N7</b>	3.9	5-15	1/4
<b>316-25-N7</b>	4.8	5-15	1/4
<b>327-25-N7</b>	4.8	5-15	1/3



**DIMENSIONS:**

Model	Length		Width		Height		Cube ft. crated	Weight		Cold Pan Length	
	in	cm	in	cm	in	cm		lbs	kg	in	cm
<b>315-25-N7</b>	46	116.8	24-1/2	62.2	36	91.4	37.7	310	141.0	42-1/2	108.0
<b>316-25-N7</b>	60	152.4	24-1/2	62.2	36	91.4	47.9	386	175.5	56-1/2	143.5
<b>327-25-N7</b>	74	188.0	24-1/2	62.2	36	91.4	58.1	477	216.8	70-1/2	179.1

**Freight Class: 115**



**Duke Manufacturing Co.**  
2305 N. Broadway  
St. Louis, MO 63102

Phone: 314-231-1130  
Toll Free: 1-800-735-3853  
Fax: 314-231-5074

[www.dukemfg.com](http://www.dukemfg.com)