



Your Solutions Partner

# Specifications

F.O.B Sedalia, Missouri 65301



ASI-3ESL

### OPTIONS:

- 3 phase wiring (except **ADI-1E**)
- 1,000 watt element (not available on 120V 5- and 6-well units)
- Designer Foodshields
- Stainless spillage pans
- Telescope covers
- Removable S/S carving station
- Adapter Plates
- Adapter Bars

### AGENCY LISTING:



**DUKE MANUFACTURING CO.**  
**2305 N. Broadway**  
**St. Louis, MO 63102**

**800.735.3853 Toll Free**  
**314.231.5074 Fax**  
**www.dukemfg.com**

**Approval Stamp(s):**

### PRODUCT INFORMATION:

PROJECT: \_\_\_\_\_

ITEM: \_\_\_\_\_

QUANTITY: \_\_\_\_\_

MODEL:

### Slide - In - Slimline

### Hot Food - Electric - Exposed Elements

- ASI-1ESL** 24-1/4" length / 1 top opening
- ASI-2ESL** 46-1/4" length / 2 top openings
- ASI-3ESL** 58-1/4" length / 3 top openings

### TOP RIM:

- Heavy gauge, 300 Series stainless steel
- Die-stamped openings - 12-1/16" x 20-1/16"
- 15/16" overhang on ends and back
- Operator's side turned down
- Reinforced rim
- Vinyl foam gasket as sealant

### HEAT COMPARTMENTS:

- 8" deep stainless steel liner, dry operation
- 1" fiberglass insulation - all 4 sides, bottom and between sections
- 750 watt exposed element in each section
- Voltage/Phase
  - 120 Volt/1 Ph
  - 208 Volt/1 Ph
  - 240 Volt/1 Ph
- Single phase standard
- Thermostat & indicator light for each element
- Master control switch and indicator light
- Includes #576 aluminum spillage pans - each well

### EXTERIOR HOUSING

- Heavy gauge paint grip steel on one side and both ends
- Stainless steel operator's side

### SHORT FORM SPECIFICATIONS:

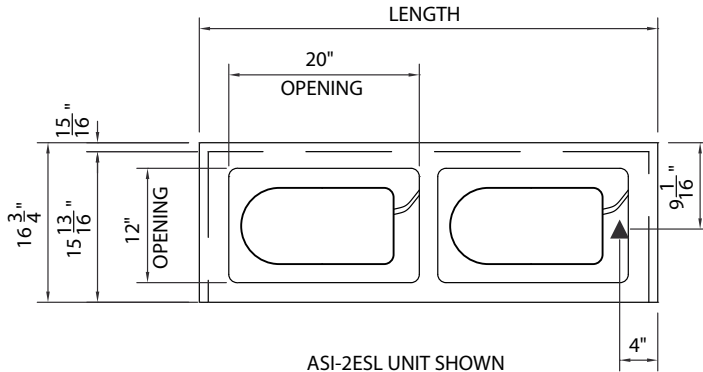
**Duke Slide-In - Slimline - Hot Food - Electric.** Top flange of heavy gauge 300 series s/s with overhang on back and ends and operator side turned down, 12-1/16" x 20-1/16" die-stamped hot food openings, 8" deep s/s liner fully insulated, s/s top, interior liner, operator's rail and panel with individual thermostatic controls, steel exterior, s/s operator's side, exposed elements, includes 576 spillage pans



**SLIDE - IN - SLIMLINE  
HOT FOOD - ELECTRIC**

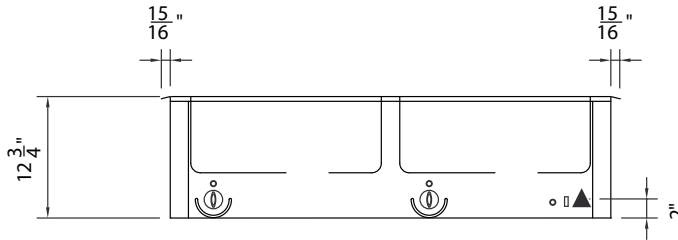
- **ASI-1ESL** 24-1/4" length / 1 top opening
- **ASI-2ESL** 46-1/4" length / 2 top openings
- **ASI-3ESL** 68-1/4" length / 3 top openings

LEGEND	
▲	ELECTRICAL CONNECTION

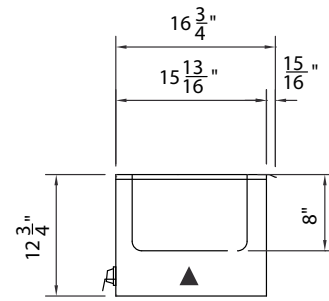


ASI-2ESL UNIT SHOWN

TOP VIEW



FRONT VIEW



RIGHT SIDE VIEW

**DIMENSIONS:**

FREIGHT CLASS: 100

Model	Length		Width		Height		Top Openings	Cutout Length		Cutout Width		Cube ft. Crated	Weight	
	in.	cm	in.	cm	in.	cm		in.	cm	in.	cm		lbs.	kg.
ASI-1ESL	24-1/4	61.6	6-3/4	42.6	12-3/4	32.4	1	23	58.4	16	40.6	7.6	80	36.4
ASI-2ESL	46-1/4	117.5	6-3/4	42.6	12-3/4	32.4	2	45	114.3	16	40.6	13.0	135	61.4
ASI-3ESL	68-1/4	173.4	6-3/4	42.6	12-3/4	32.4	3	67	170.2	16	40.6	18.5	185	84.1

**ELECTRICAL SPECIFICATIONS:** Consult factory for 3-phase electrical requirements and other options.)

Model	120 Volt/750 Watt		208 Volt/750 Watt		240 Volt/750 Watt	
	watts	amps	watts	amps	watts	amps
ASI-1ESL	750	6.2	7500	3.6	750	3.1
ASI-2ESL	1500	12.5	1500	7.2	1500	6.3
ASI-3ESL	2250	18.8	2250	10.8	2250	9.4



**DUKE MANUFACTURING CO.**

2305 N. Broadway  
St. Louis, MO 63102

800.735.3853 Toll Free  
800.231.1130 In Missouri  
314.231.5074 Fax  
www.dukemfg.com

Specification subject to change