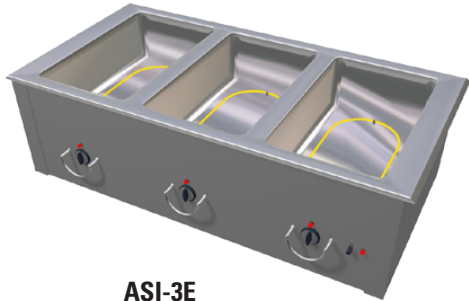




Your Solutions Partner

Specifications

F.O.B Sedalia, Missouri 65301



ASI-3E

OPTIONS:

- 3 phase wiring (except **ADI-1E**)
- 1,000 watt element (not available on 120V 5- and 6-well units)
- Designer Foodshields
- Stainless spillage pans
- Telescope covers
- Hardwood carving board
- S/S carving surface
- Removable S/S carving station
- Adapter Plates
- Drop-in style top rim

AGENCY LISTING:



DUKE MANUFACTURING CO.
2305 N. Broadway
St. Louis, MO 63102

800.735.3853 Toll Free
314.231.5074 Fax
www.dukemfg.com

Approval Stamp(s):

PRODUCT INFORMATION:

PROJECT: _____

ITEM: _____

QUANTITY: _____

MODEL:

Slide-In

Hot Food - Electric - Exposed Elements

- | | |
|--|----------------------------------|
| <input type="checkbox"/> ASI-1E | 18-1/4" L x 23-7/16W" x 12-3/4"H |
| <input type="checkbox"/> ASI-2E | 32-1/4" L x 23-7/16W" x 12-3/4"H |
| <input type="checkbox"/> ASI-3E | 46-1/4" L x 23-7/16W" x 12-3/4"H |
| <input type="checkbox"/> ASI-4E | 60-1/4" L x 23-7/16W" x 12-3/4"H |
| <input type="checkbox"/> ASI-5E | 74-1/4" L x 23-7/16W" x 12-3/4"H |
| <input type="checkbox"/> ASI-6E | 88-1/4" L x 23-7/16W" x 12-3/4"H |

TOP RIM:

- Heavy gauge, 300 Series stainless steel
- Die-stamped openings - 12-1/16" x 20-1/16"
- 15/16" overhang on back and ends
- Reinforced rim
- Vinyl foam gasket as sealant

HEAT COMPARTMENTS:

- 8" deep stainless steel liner, dry operation
- 750 watt exposed element in each compartment
- Voltage/Phase
 - 120 Volt/1 Ph
 - 208 Volt/1 Ph
 - 240 Volt/1 Ph
- Insulated bottom
- Individual thermostat controls and indicator lights
- Master control switch and knob guards
- Includes #576 aluminum spillage pans - each well

EXTERIOR HOUSING

- Heavy gauge paint grip steel on one side and both ends
- Stainless steel operator's side

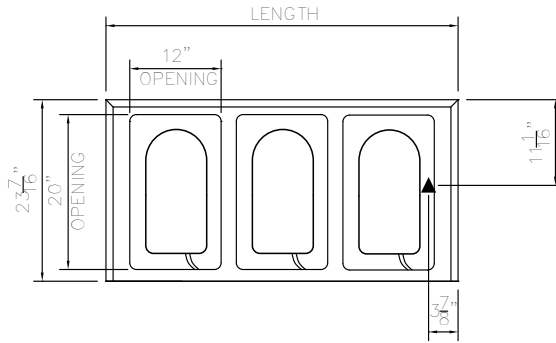
SHORT FORM SPECIFICATIONS:

Duke Slide-In - Hot Food - Electric - Exposed Elements. Top flange of heavy gauge 300 series s/s with overhang on back and ends and operator side turned down, 12-1/16" x 20-1/16" die-stamped hot food openings, 8" deep s/s liner fully insulated, s/s top, interior liner, operator's rail and panel with individual thermostatic controls, steel exterior, s/s operator's side, exposed elements, includes 576 spillage pans



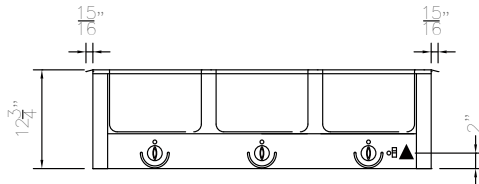
**SLIDE-IN
HOT FOOD - ELECTRIC -
EXPOSED ELEMENTS**

- **ASI-1E** 18-1/4" L x 23-7/16W" x 12-3/4"H
- **ASI-2E** 32-1/4" L x 23-7/16W" x 12-3/4"H
- **ASI-3E** 46-1/4" L x 23-7/16W" x 12-3/4"H
- **ASI-4E** 60-1/4" L x 23-7/16W" x 12-3/4"H
- **ASI-5E** 74-1/4" L x 23-7/16W" x 12-3/4"H
- **ASI-6E** 88-1/4" L x 23-7/16W" x 12-3/4"H

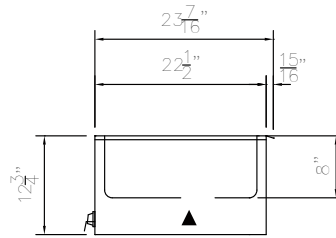


ASI-3E UNIT SHOWN

TOP VIEW



FRONT VIEW



RIGHT SIDE VIEW

LEGEND	
▲	ELECTRICAL CONNECTION

DIMENSIONS:

FREIGHT CLASS: 100

Model	Length		Width		Height		Top Openings	Cutout Length		Cutout Width		Cube ft. Crated	Weight	
	in.	cm	in	cm	in	cm		in.	cm	in.	cm		lbs.	kg.
ASI-1E	18-1/4	46.4	23-7/16	59.7	12-3/4	32.4	1	17	43.2	23	58.4	8.0	43	19.6
ASI-2E	32-1/4	81.9	23-7/16	59.7	12-3/4	32.4	2	31	78.7	23	58.4	12.6	75	34.1
ASI-3E	46-1/4	117.5	23-7/16	59.7	12-3/4	32.4	3	45	114.3	23	58.4	17.3	90	40.9
ASI-4E	60-1/4	153.0	23-7/16	59.7	12-3/4	32.4	4	59	149.9	23	58.4	21.9	115	52.3
ASI-5E	74-1/4	188.6	23-7/16	59.7	12-3/4	32.4	5	73	185.4	23	58.4	26.5	140	63.6
ASI-6E	88-1/4	224.2	23-7/16	59.7	12-3/4	32.4	6	87	221.0	23	58.4	31.3	220	100.0

ELECTRICAL SPECIFICATIONS: (Consult factory for 3-phase electrical requirements and other options.)

Model	120 Volt/750 Watt		208 Volt/750 Watt		240 Volt/750 Watt	
	watts	amps	watts	amps	watts	amps
ASI-1E	750	6.2	900	3.6	1200	3.1
ASI-2E	1500	12.5	1500	7.2	1500	6.3
ASI-3E	2250	18.8	2250	10.8	2250	9.4
ASI-4E	3000	25.0	3000	14.4	3000	12.5
ASI-5E	3750	31.3	3750	18.0	3750	15.7
ASI-6E	N/A	N/A	4500	21.6	4500	18.8

DUKE MANUFACTURING CO.

2305 N. Broadway
St. Louis, MO 63102

800.735.3853 Toll Free
800.231.1130 In Missouri
314.231.5074 Fax
www.dukemfg.com



Specification subject to change