



Your Solutions Partner

Specifications

F.O.B. Sedalia, Missouri 65301

Approval Stamp(s):

PRODUCT INFORMATION:

PROJECT: _____

ITEM: _____

QUANTITY: _____

MODEL:

AeroServ Serving Systems - Accessories

- 442-x W or S Carving/Tray Shelves - 7"W
- 445-x W or S Carving/Tray Shelves - 10"W
- 380-25/381-25 Skeleton Units/End Returns
- 73 & 71 Silverware Dispensers
- 322-25 Silverware Shelf
- 441-x-S Dish Shelves
- 328-x/329-x Sliding Doors
- SOLID-FX/HD Solid Tray Slide
- 3BTS-FX/HD 3 Bar Tray Slide

CARVING/TRAY SHELVES: not shown

- 1" thick hardwood or 18 gauge stainless steel
- Mounted on stainless steel brackets

SKELETON UNITS:

- Heavy gauge paint-grip or stainless steel
- Finish to match other units
- Available on legs only

SILVERWARE SHELF: not shown

- Heavy gauge, 300 Series stainless steel - 12" x 24-1/2"
- Mounted on stainless steel fixed brackets

SILVERWARE DISPENSER: not shown

- 18 gauge stainless steel
- Die-formed with 18 gauge stainless ends
- 3-1/2" diameter cup of formed plastic and perforated bottom

DISH SHELVES

- 25", 39", 53" or 67" lengths
- 18 gauge stainless steel with stainless brackets
- Positions above control knobs on hot food tables

SLIDING DOORS:

- Double-wall, paint grip or stainless steel
- Ball-bearing wheels on overhead tracks
- Lift out for easy cleaning
- Lock option at added charge

SOLID TRAY SLIDES:

- 18", 24-1/2", 32", 46", 60", 74" lengths
- 16 gauge stainless steel, stainless steel brackets
- (2) 1/8" high embossed rubbing tracks
- Special lengths available

3 BAR TRAY SLIDES:

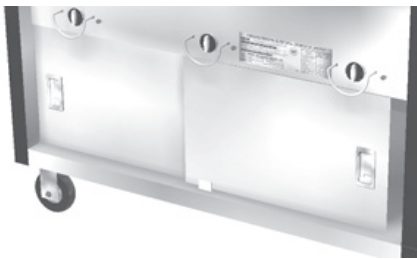
- 18", 24-1/2", 32", 46", 60", 74" lengths
- 1" diameter stainless steel tubes, ends capped
- Stainless steel brackets
- Special lengths available



Skeleton Unit



Dish Shelf



Sliding Doors



Solid Tray Slide



3 Bar Tray Slide

Agency Listing:



DUKE MANUFACTURING CO.

2305 N. Broadway

St. Louis, MO 63102

800.735.3853 Toll Free

314.231.5074 Fax

www.dukemfg.com

SS-1126 AeroServ Accessories

Specification subject to change



AeroServ

ACCESSORIES

A.I.A. File No. 35-C-13

Catalog No. ASC-ACCESS

Carving/Tray Shelves - 10"

Model		Shelf Length		Shelf Width		Brackets Provided	Weight			
Hardwood	Stainless	in	cm	in	cm		Hardwood		Stainless	
							lbs	kg	lbs	kg
445-2W	445-2S	32	81.3	10	25.4	2	13	5.9	11	5.0
445-3W	445-3S	46	116.8	10	25.4	2	18	8.2	14	6.4
445-4W	445-4S	60	152.4	10	25.4	3	22	10.0	17	7.7
445-5W	445-5S	74	188.0	10	25.4	3	27	12.3	22	10.0

Carving Board - 7"

Model		Shelf Length		Shelf Width		Brackets Provided	Weight			
Hardwood	Stainless	in	cm	in	cm		Hardwood		Stainless	
							lbs	kg	lbs	kg
442-2W	442-2S	32	81.3	7	17.8	2	10	4.6	8	3.6
442-3W	442-3S	46	116.8	7	17.8	2	12	5.5	11	5.0
442-4W	442-4S	60	152.4	7	17.8	3	14	6.4	14	6.4
442-5W	442-5S	74	188.0	7	17.8	3	18	8.2	17	7.7

Sliding Doors for Hot Food Units

Model	Length		Door Height		Weight		Model	Length		Door Height		Weight	
	in	cm	in	cm	lbs	kg		in	cm	in	cm	lbs	kg
328-3	46	116.8	12	30.5	40	18.2	329-3	46	116.8	17	43.2	45	20.5
328-4	60	152.4	12	30.5	50	22.7	329-4	60	152.4	17	43.2	55	25.0
328-5	74	188.0	12	30.5	60	27.3	329-5	74	188.0	17	43.2	65	29.6

Silverware Shelves

Model	Length	
	in	cm
322-25	12	30.5

Silverware Dispenser and Plastic Cups

Model	Unit Length		Unit Width		Unit Height		Cube ft. Crated	Cup Capacity	Crated Ship Wt.	
	in	cm	in	cm	in	cm			lbs	kg
73	16-3/8	41.6	9-3/4	24.8	7-1/4	18.4	2.7	5	16	7.3
71	21-5/8	55.0	9-3/4	24.8	7-1/4	18.4	2.7	7	24	10.9

Dish Shelves

Model	Shelf Length		Shelf Width		Shelf Weight	
	in	cm	in	cm	lbs	kg
441-2S	25	63.5	7	17.8	8	3.6
441-3S	39	99.1	7	17.8	11	5.0
441-4S	53	134.6	7	17.8	13	5.9
441-5S	67	170.2	7	17.8	15	6.8

Skeleton Units

Freight Class: 150

Model	Description
380-25	Front panel: 36" high, 12 lbs. per foot
381-25	End panel: 24-1/2" wide, 36" high, 20 lbs. w/6" legs

AEROSERV SERVING SYSTEMS - ACCESSORIES



Duke Manufacturing Co.
2305 N. Broadway
St. Louis, MO 63102

Phone: 314-231-1130
Toll Free: 1-800-735-3853
Fax: 314-231-5074

www.dukemfg.com

Printed in U.S.A.
© 2019, Duke Manufacturing Co.