

DESIGN: Hybrid epoxy and polymer shelving. Smooth, vented, open grid surface allows free air circulation and minimal dust build up. Polymer mats can be easily removed for cleaning by hand or industrial dish washer.

CONSTRUCTION: All welded wire shelf frames and posts are constructed of heavy-gauge carbon steel or Type 304 stainless steel.

FINISH:

- **Antibacterial Blue** - is an ideal solution for high humidity, wet, or walk-in-cooler applications. The carbon steel is treated with an iron phosphate and the powder coated epoxy is electrostatically applied, baked and cured to a hard surface. Antimicrobial additive. 15-year limited warranty (limited against rust and corrosion)
- **Polymer Mat** - is ideal for all applications. The polymer composition offers prolonged durability and is impact resistant. Shelf mats will not chip, rust or corrode. Limited lifetime warranty (limited against rust and corrosion).

QUICK, EASY ASSEMBLY: Posts have a double groove visual guide feature every 8", circular grooves at 1" increments, and are numbered at 1" intervals. Tapered split sleeve snaps together around each post. Tapered openings in the shelf corners slide over the tapered split sleeves providing a positive lock. Shelf is assembled in minutes without the use of any special tools.

ADJUSTABLE: Shelves can be adjusted at 1" intervals along length of the post.

WIRE TRUSSES: Architectural wire trusses increase shelf capacity.

TOP PLASTIC MAT: Durable polymer composition withstand high temperatures and daily rigorous usage.

INTERCHANGABLE: Posts and shelves are compatible with the industry standard wire shelving.

SHELF ACCESSIBILITY: Shelves can be loaded/unloaded easily from all sides. This open construction allows maximum use of storage capability and accessibility.

ADJUSTABLE FOOT: 3/8-16 leveling bolt compensate for irregular floor surfaces.

NSF APPROVED: Antimicrobial additive protects the epoxy coating from bacteria, mold and mildew, that causes stains, odors and product degradation.



Highest Quality, Lowest Price Guaranteed!

QUANTUM FOOD SERVICE

15800 NW 15TH AVENUE, MIAMI, FLORIDA 33169 TOLL-FREE: (888) 993-3370 FAX: (954) 369-2512
E-MAIL: SALES@QUANTUMFOODSERVICE.COM WWW.QUANTUMFOODSERVICE.COM

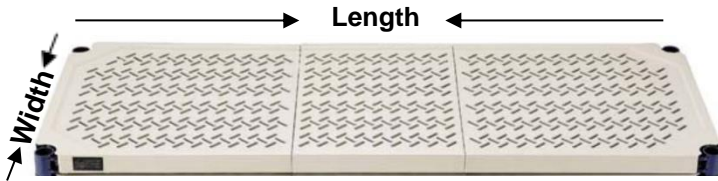
PLASTIC SHELVES

- Plastic Split SLEEVES - are included with each shelf
Replacements are available:
Model No: **WR-SS** (4 Pairs)



Split Sleeve

- Load capacity (evenly distributed) per shelf
Widths: 18" and 24"
Lengths: 800 lbs. for 30" to 48"
600 lbs. for 60" and 72"



- Temperature - Dish washer safe. It can be used with temperatures up to 200°F (93°C)

DIMENSIONS W" x L"	SHIP WGT	MODEL NO.
18" x 30"	6 lbs.	RP1830E
18" x 36"	8 lbs.	RP1836E
18" x 42"	9 lbs.	RP1842E
18" x 48"	10 lbs.	RP1848E
18" x 60"	12 lbs.	RP1860E
18" x 72"	14 lbs.	RP1872E
24" x 30"	9.5 lbs.	RP2430E
24" x 36"	11.5 lbs.	RP2436E
24" x 42"	13 lbs.	RP2442E
24" x 48"	14 lbs.	RP2448E
24" x 60"	17 lbs.	RP2460E
24" x 72"	20 lbs.	RP2472E

POSTS

All posts are fitted with adjustable post levelers to compensate for uneven surfaces. Mobile posts come without levelers to accommodate stem casters.

- Post LEVELER Insert & LEVELING Bolt - use to account for UNEVEN floors, it adjusts up or down allowing height flexibility
Replacements are available:
Insert Model No. **W-PLI** Leveling Bolt Model No. **W-PLB**

- Foot Plates - triangular plate allows additional surface to disperse weight. It may be ordered separately and installed in place of LEVELING foot
Model No: **FP**

- Floor Guides - Serves as protection to PREVENT marring of floors
Model No: **FG** (Pack of 4)



Foot Plate



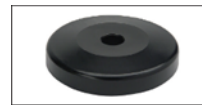
Floor Glides

Post Insert

Post Leveling Bolt



DIMENSIONS H"	SHIP WGT	MODEL NO.
63"	3 lbs.	RP63E
72"	3 lbs.	RP72E
86"	5 lbs.	RP86E



DB

Donut Bumper

Non-marking donut bumper used to protect walls and help cushion impact. Sold individually. Measures 3" diameter



WR-00HS

Polyurethane Stainless Steel Casters w/ Zerk Grease Fittings

Sold as a set of 4 casters, 2 with brake. Measures 5" x 1-1/4"



WR-00H

Polyurethane Casters

Sold as a set of 4 casters, 2 with brake. Measures 5" x 1-1/4"

Highest Quality, Lowest Price Guaranteed!

QUANTUM FOOD SERVICE

15800 NW 15TH AVENUE, MIAMI, FLORIDA 33169 TOLL-FREE: (888) 993-3370 FAX: (954) 369-2512
E-MAIL: SALES@QUANTUMFOODSERVICE.COM WWW.QUANTUMFOODSERVICE.COM

UNITS

All units come complete with 4 wire frames, 4 plastic wire mats, 4 posts, 4 packs of split sleeves (packed in 4) and 4 levelers.

DIMENSIONS W" x L" x H"	SHIP WGT	MODEL NO.
18" x 30" x 72"	44 lbs.	RPWR72-1830E*
18" x 36" x 72"	49 lbs.	RPWR72-1836E*
18" x 42" x 72"	49 lbs.	RPWR72-1842E
18" x 48" x 72"	59 lbs.	RPWR72-1848E*
18" x 60" x 72"	60 lbs.	RPWR72-1860E
18" x 72" x 72"	68 lbs.	RPWR72-1872E
24" x 30" x 72"	57 lbs.	RPWR72-2430E*
24" x 36" x 72"	64 lbs.	RPWR72-2436E*
24" x 42" x 72"	64 lbs.	RPWR72-2442E
24" x 48" x 72"	77 lbs.	RPWR72-2448E*
24" x 60" x 72"	80 lbs.	RPWR72-2460E
24" x 72" x 72"	92 lbs.	RPWR72-2472E

*These units come pre-packed in a single box for easy inventory control, shipping, and receiving.



Highest Quality, Lowest Price Guaranteed!

QUANTUM FOOD SERVICE

15800 NW 15TH AVENUE, MIAMI, FLORIDA 33169 TOLL-FREE: (888) 993-3370 FAX: (954) 369-2512

E-MAIL: SALES@QUANTUMFOODSERVICE.COM WWW.QUANTUMFOODSERVICE.COM