



Your Solutions Partner

Specifications

F.O.B Sedalia, Missouri 65301



ASI-3ESL-SW

OPTIONS:

- 3 phase wiring (except **ASI-1ESL-SW**)
- Manifold, per well
- Master globe valve
- Individual valves - **per well**
- Designer Foodshields
- Telescope covers
- Hardwood carving board
- S/S carving surface
- S/S dish shelf
- Adapter Plates
- Drop-in style top rim

AGENCY LISTING:



DUKE MANUFACTURING CO.
2305 N. Broadway
St. Louis, MO 63102

800.735.3853 Toll Free
314.231.5074 Fax
www.dukemfg.com

Approval Stamp(s):

PRODUCT INFORMATION:

PROJECT: _____

ITEM: _____

QUANTITY: _____

MODEL:

Slide-Ins - Slimline - Hot Food Electric - Sealed Wells

- ASI-1ESL-SW** 24-1/4"L x 16-3/4"W x 12-3/4"H
- ASI-2ESL-SW** 46-1/4"L x 16-3/4"W x 12-3/4"H
- ASI-3ESL-SW** 68-1/4"L x 16-3/4"W x 12-3/4"H

TOP RIM:

- Heavy gauge, 300 Series stainless steel
- Die-stamped openings - 12-1/16" x 20-1/16"
- 15/16" overhang on back and ends
- Reinforced rim
- Vinyl foam gasket as sealant
- Operator's side turned down

HEAT COMPARTMENTS:

- 6-1/4" deep stainless steel liner, wet or dry operation
- Element under each compartment
 - 750 watt, 120 Volt/1 Ph
 - 900 watt, 208 Volt/1 Ph
 - 1200 watt, 240 Volt/1 Ph
- Individual open drains
- Individual thermostat controls and indicator lights
- Master switch and chrome knob guards
- Insulated bottom

EXTERIOR HOUSING

- Heavy gauge paint grip steel on one side and both ends
- Stainless steel on operator's side

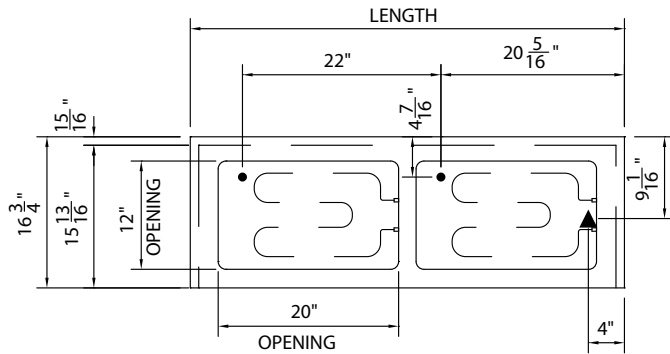
SHORT FORM SPECIFICATIONS:

Duke Slide-Ins - Slimline - Hot Food - Electric - Sealed Wells.
 Top flange of heavy gauge 300 series s/s with overhang on back and ends and operator side turned down, 12-1/16" x 20-1/16" die-stamped hot food openings, 6-1/4" deep s/s liner fully insulated, s/s top, interior liner, operator's rail and control panel with individual thermostatic controls, steel exterior, s/s operator's side, sealed wells with drains



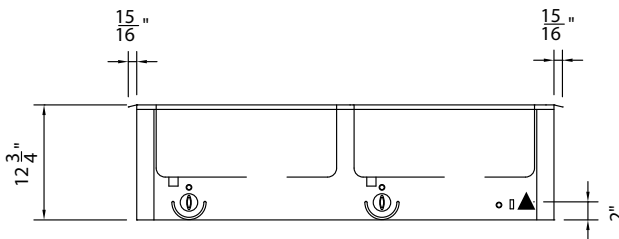
**SLIDE-IN - SLIMLINE
HOT FOOD - ELECTRIC - SEALED WELLS**

- **ASI-1ESL-SW** 24-1/4" L x 16-3/4" W x 12-3/4" H
- **ASI-2ESL-SW** 46-1/4" L x 16-3/4" W x 12-3/4" H
- **ASI-3ESL-SW** 68-1/4" L x 16-3/4" W x 12-3/4" H



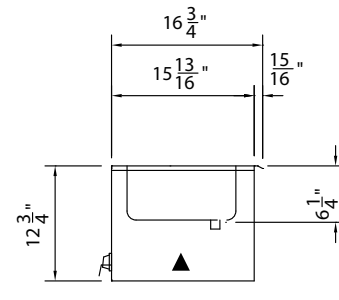
ASI-2ESL-SW UNIT SHOWN

TOP VIEW



FRONT VIEW

LEGEND	
▲	ELECTRICAL CONNECTION
●	DRAIN LOCATION



RIGHT SIDE VIEW

DIMENSIONS:

FREIGHT CLASS: 100

Model	Length		Width		Height		Top Openings	Cutout Length		Cutout Width		Cube ft. Crated	Weight	
	in.	cm	in.	cm	in.	cm		in.	cm	in.	cm		lbs.	kg.
ASI-1ESL-SW	24-1/4	61.6	16-3/4	42.6	12-3/4	32.4	1	23	58.4	16	40.6	7.6	80	36.4
ASI-2ESL-SW	46-1/4	117.5	16-3/4	42.6	12-3/4	32.4	2	45	114.3	16	40.6	13.0	135	61.4
ASI-3ESL-SW	68-1/4	173.4	16-3/4	42.6	12-3/4	32.4	3	67	170.2	16	40.6	18.5	185	84.1

ELECTRICAL SPECIFICATIONS: (Consult factory for 3-phase electrical requirements and other options)

Model	120 Volt/750 Watt		208 Volt/900 Watt		240 Volt/1200 Watt	
	watts	amps	watts	amps	watts	amps
ASI-1ESL-SW	750	6.3	900	4.4	1200	5.0
ASI-2ESL-SW	1500	12.5	1800	8.7	2400	10.0
ASI-3ESL-SW	2250	18.8	2700	13.0	3600	15.0



DUKE MANUFACTURING CO.

2305 N. Broadway
St. Louis, MO 63102

800.735.3853 Toll Free
800.231.1130 In Missouri
314.231.5074 Fax
www.dukemfg.com

Specification subject to change