



MONTAGUE  
**TECHNOSTAR**

Item No. \_\_\_\_\_

Project \_\_\_\_\_

Quantity \_\_\_\_\_

## Heavy-Duty Restaurant Gas Infrared, Salamander Broilers

### SB36-BHS Series



Model SB36-BHS

#### SHORT/BID SPECIFICATION

Salamander Broiler shall be a Montague *Technostar* Model: **SB36** - \_\_\_\_  
[Specify Mounting]:

- BHS** — for High Shelf mounting on T- or VT- Series Technostar Series Range

...a gas-fired, infrared broiler with 32,000 BTU/hr top-mounted ceramic burner;

...mounted above a counter-balanced, height adjustable, chrome-plated steel cooking grid that is drawer-mounted for easy pull-out access, with a full width grease deflector and large capacity left-front-mounted grease container; plus all the features listed and options/accessories checked:

#### SB36 MODELS — Rapid-Start Burner Features:

- 32,000 BTU/hr ceramic tile burner
- Top-mounted ceramic burner ensures uniform infrared heating for:
- Full flow ON/OFF operation
- Standing pilot for automatic ignition

#### MODEL GUIDE

✓	Model No.	Mounting	Power [BTU/hr]	Temperature Control
	SB36-BHS	Range/High-Back	32,000	Full-On/Off

#### ROLL-OUT BROILER/GRID FEATURES [All Models]:

- One piece nickel-plated steel cooking grid: 26-3/4" x 13-1/8" (679 x 333mm) deep
- Counter-balanced grid assembly for easy height adjustment
- Infinite grid height adjustment from 2" (51mm) to 5" (127mm)
- Positive locking lift handle with cool ball-style grip
- Quiet, ball bearing mounted pull-out grid assembly
- Full-width horizontal grab-bar handle

#### MOUNTING:

- **-BHS** Models are High Shelf mounted-left on a Technostar Series Range

#### STANDARD CONSTRUCTION FEATURES:

- Satin finish stainless steel front, sides and top
- Broiler interior high temperature aluminized steel
- Full width grease deflector under rollout grid
- Large, removable full-width grease drawer
- 1" (25mm) high broiler flue riser
- 1/2" (13mm) NPT gas connection at upper-right rear

#### AGENCY APPROVALS

- NSF Listed
- CSA Design Certified to ANSI Z83.11 • CSA 1.8

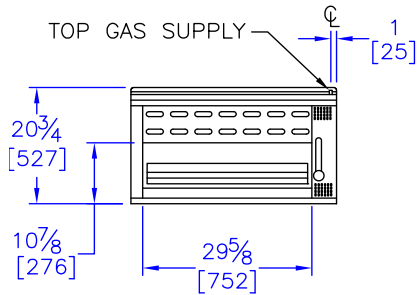


HDRS-13 [Rev. 2/17]

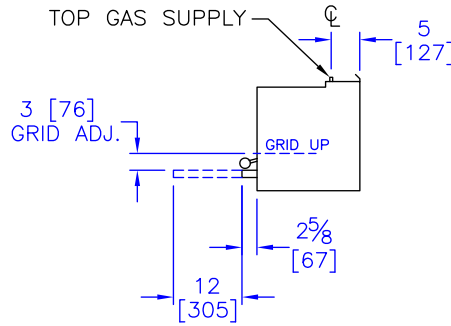
# Gas Infrared, Heavy-Duty Restaurant Salamander Broilers

## SB36-BHS Series

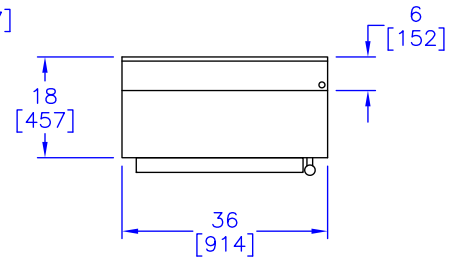
Dimensions in brackets are millimeters



**FRONT VIEW**



**RIGHT SIDE VIEW**



**TOP VIEW**

### OPTIONS GUIDE:

- Stainless steel back panel
- Stainless steel bottom

- Interconnecting gas line from range & broiler
- 4" (102mm) legs — satin finish stainless steel  
[Note: Legs can not be added in the field.]

### International Approvals:

- Canadian Approval

### INSTALLATION REQUIREMENTS & SHIPPING INFORMATION

- Technostar units must be installed in accordance with local codes or in their absence with the National Fuel Gas Code: ANSI Z223.1; CAN/CGA-B149.1 or Natural Gas and Propane Installation Code, as applicable. Compliance with codes is the responsibility of the Owner and Installer.
- An adequate ventilation system is required. Refer to National Fire Protection Association Standard No. 96, Standard for Ventilation and Fire Protection of Commercial Cooking Operations.
- This appliance is intended for commercial use by professionally trained personal. NOT intended for Residential Use.
- Specify installation elevation: \_\_\_\_\_ if above 2000 feet (610m).
- GAS INLET SIZE: 1/2" NPT at top right rear. A 1/2" NPT gas pressure regulator is provided and must be installed (by others) when unit is connected to gas supply.  
Exception: Optional interconnecting gas line between range mounted SB36 eliminates the above gas connection.
- The incoming gas line pressure into the regulator should be 8"-14" W.C. for natural gas and 12"-14" W.C. for propane gas.

Mounting Requirements/Minimum Clearances	
<b>Counter Mounting</b>	Non-combustible counters & adjacent walls
<b>Range Mounting</b>	See range rating plate for clearances.

Specify Type of Gas:		<input type="checkbox"/> Natural	<input type="checkbox"/> Propane	Shipping Weight	Shipping Class	Cube (Crated) ft <sup>3</sup> /m <sup>3</sup>
Manifold Pressure:		4.0" WC	10.0" WC			
Models:	Burners	BTU/hr* (kW)	BTU/hr* (kW)			
<b>SB36-BHS</b>	1	32,000 (9.4)	32,000 (9.4)	200 lbs (91 kg)	85	13/.4

\*Total BTU Input/firing rate

Due to continuous product improvements, specifications are subject to change without notice.



## THE MONTAGUE COMPANY

1830 Stearman Avenue, Hayward, CA 94545

800 345-1830 • Fax: 510 785-3342

www.montaguecompany.com



HDRS-13 [Rev. 2/17]