



Your Solutions Partner

Specifications

F.O.B Sedalia, Missouri 65301



ASI-3E-SW

OPTIONS:

- 3 phase wiring (except **ASI-1E-SW**)
- Manifold, per well
- Master globe valve
- Individual valves - **per well**
- Designer Foodshield
- Telescope covers
- Hardwood carving board
- S/S carving surface S/S dish shelf
- Removable S/S carving station
- Adapter Plates
- Drop-in style top rim

AGENCY LISTING:



DUKE MANUFACTURING CO.
2305 N. Broadway
St. Louis, MO 63102

800.735.3853 Toll Free
314.231.5074 Fax
www.dukemfg.com

Approval Stamp(s):

PRODUCT INFORMATION:

PROJECT: _____
 ITEM: _____
 QUANTITY: _____

MODEL:

Slide-In

Hot Food - Electric - Sealed Well

- ASI-1E-SW** 18-1/4"L x 23-7/16"W x 12-3/4"H
- ASI-2E-SW** 32-1/4"L x 23-7/16"W x 12-3/4"H
- ASI-3E-SW** 46-1/4"L x 23-7/16"W x 12-3/4"H
- ASI-4E-SW** 60-1/4"L x 23-7/16"W x 12-3/4"H
- ASI-5E-SW** 74-1/4"L x 23-7/16"W x 12-3/4"H
- ASI-6E-SW** 88-1/4"L x 23-7/16"W x 12-3/4"H

TOP RIM:

- Heavy gauge, 300 Series stainless steel
- Die-stamped openings - 12-1/16" x 20-1/16"
- 15/16" overhang on back and ends
- Reinforced rim
- Vinyl foam gasket as sealant

HEAT COMPARTMENTS:

- 6-1/4" deep stainless steel liner, wet or dry operation
- Element under each compartment
 - 750 watt, 120 Volt/1 Ph
 - 900 watt, 208 Volt/1 Ph
 - 1200 watt, 240 Volt/1 Ph
- Individual open drains
- Individual thermostat controls and indicator lights
- Master switch and chrome knob guards
- Insulated bottom

EXTERIOR HOUSING

- Heavy gauge paint grip steel on one side and both ends
- Stainless steel on operator's side

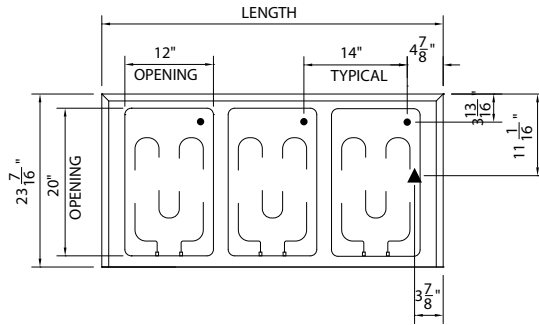
SHORT FORM SPECIFICATIONS:

Duke Slide-Ins - Hot Food - Electric - Sealed Wells. Top flange of heavy gauge 300 series s/s with overhang on back and ends and operator side turned down, 12-1/16" x 20-1/16" die-stamped hot food openings, 6-1/4" deep s/s liner fully insulated, s/s top, interior liner, operator's rail and control panel with individual thermostatic controls, steel exterior, s/s operator's side, sealed wells with drains



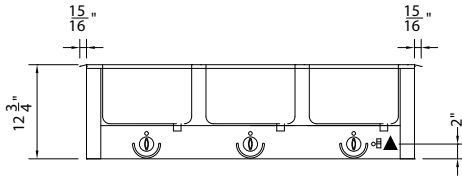
**SLIDE-INS
HOT FOOD - ELECTRIC - SEALED WELL**

- **ASI-1E-SW** 18-1/4" L x 23-7/16" W x 12-3/4" H
- **ASI-2E-SW** 32-1/4" L x 23-7/16" W x 12-3/4" H
- **ASI-3E-SW** 46-1/4" L x 23-7/16" W x 12-3/4" H
- **ASI-4E-SW** 60-1/4" L x 23-7/16" W x 12-3/4" H
- **ASI-5E-SW** 74-1/4" L x 23-7/16" W x 12-3/4" H
- **ASI-6E-SW** 88-1/4" L x 23-7/16" W x 12-3/4" H

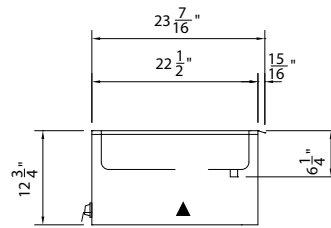


ASI-3E-SW UNIT SHOWN

TOP VIEW



FRONT VIEW



RIGHT SIDE VIEW

LEGEND	
▲	- ELECTRICAL CONNECTION
●	- DRAIN LOCATION

DIMENSIONS:

FREIGHT CLASS: 100

Model	Length		Width		Height		Top Openings	Cutout Length		Cutout Width		Cube ft. Crated	Weight	
	in.	cm	in	cm	in	cm		in.	cm	in.	cm		lbs.	kg.
ASI-1E-SW	18-1/4	46.4	23-7/16	59.7	12-3/4	32.4	1	17	43.2	23	58.4	8.0	43	19.6
ASI-2E-SW	32-1/4	81.9	23-7/16	59.7	12-3/4	32.4	2	31	78.7	23	58.4	12.6	75	34.1
ASI-3E-SW	46-1/4	117.5	23-7/16	59.7	12-3/4	32.4	3	45	114.3	23	58.4	17.3	90	40.9
ASI-4E-SW	60-1/4	153.0	23-7/16	59.7	12-3/4	32.4	4	59	149.9	23	58.4	21.9	115	52.3
ASI-5E-SW	74-1/4	188.6	23-7/16	59.7	12-3/4	32.4	5	73	185.4	23	58.4	26.5	140	63.6
ASI-6E-SW	88-1/4	224.2	23-7/16	59.7	12-3/4	32.4	6	87	221.0	23	58.4	31.3	220	100.0

ELECTRICAL SPECIFICATIONS: (Consult factory for 3-phase electrical requirements and other options)

Model	120 Volt/750 Watt		208 Volt/900 Watt		240 Volt/1200 Watt	
	watts	amps	watts	amps	watts	amps
ASI-1E-SW	750	6.3	900	4.4	1200	5.0
ASI-2E-SW	1500	12.5	1800	8.7	2400	10.0
ASI-3E-SW	2250	18.8	2700	13.0	3600	15.0
ASI-4E-SW	3000	25.0	3600	17.3	4800	20.0
ASI-5E-SW	3750	31.3	4500	21.6	6000	25.0
ASI-6E-SW	N/A	N/A	5400	26.0	7200	30.0

DUKE MANUFACTURING CO.

2305 N. Broadway
St. Louis, MO 63102

800.735.3853 Toll Free
800.231.1130 In Missouri
314.231.5074 Fax
www.dukemfg.com



Specification subject to change