



Your Solutions Partner

Specifications

F.O.B. Sedalia, Missouri 65301



ADI-3E

OPTIONS:

- 13 phase wiring (except **ADI-1E**)
- 1,000 watt element (not available on 120V 5- and 6-well units)
- Designer Foodshields
- Stainless spillage pans
- Telescope covers
- Removable S/S carving station
- Adapter Plates
- Adapter Bars

AGENCY LISTINGS:



DUKE MANUFACTURING CO.
 2305 N. Broadway
 St. Louis, MO 63102
 800.735.3853 Toll Free
 314.231.5074 Fax
 www.dukemfg.com
 SS-1051 Drop-in - Electric Exposed

Approval Stamp(s):

PRODUCT INFORMATION:

PROJECT: _____

ITEM: _____

QUANTITY: _____

MODEL:

Drop-Ins

Hot Food - Electric - Exposed Element Wells

- ADI-1E** 18 1/4" L X 24 1/4" W X 12 3/4" H
- ADI-2E** 32 1/4" L X 24 1/4" W X 12 3/4" H
- ADI-3E** 46 1/4" L X 24 1/4" W X 12 3/4" H
- ADI-4E** 60 1/4" L X 24 1/4" W X 12 3/4" H
- ADI-5E** 74 1/4" L X 24 1/4" W X 12 3/4" H
- ADI-6E** 88 1/4" L X 24 1/4" W X 12 3/4" H

TOP RIM:

- Heavy gauge, 300 Series stainless steel
- Overhang on front, back and ends w/locking tabs
- Vinyl foam gasket as sealant
- Die-stamped openings - 12 1/16" x 20 1/16"

HEAT COMPARTMENTS:

- Exposed element in each compartment
 - 500 watt, 120 Volt/1 Ph
 - 750 watt, 208 Volt/1 Ph
 - 750 watt, 240 Volt/1 Ph
- 8" deep stainless steel liner, dry operation
- Insulated bottom
- Includes #576 aluminum spillage pans for use with water

CONTROL PANEL:

- Stainless steel face plate, plastic knobs
- UL approved
- Infinite switch controls in remote box with 24" lead
- 2 panels of units with 4, 5 or 6 wells

EXTERIOR HOUSING:

- Heavy gauge paint grip steel

DROP-IN - HOT FOOD - ELECTRIC

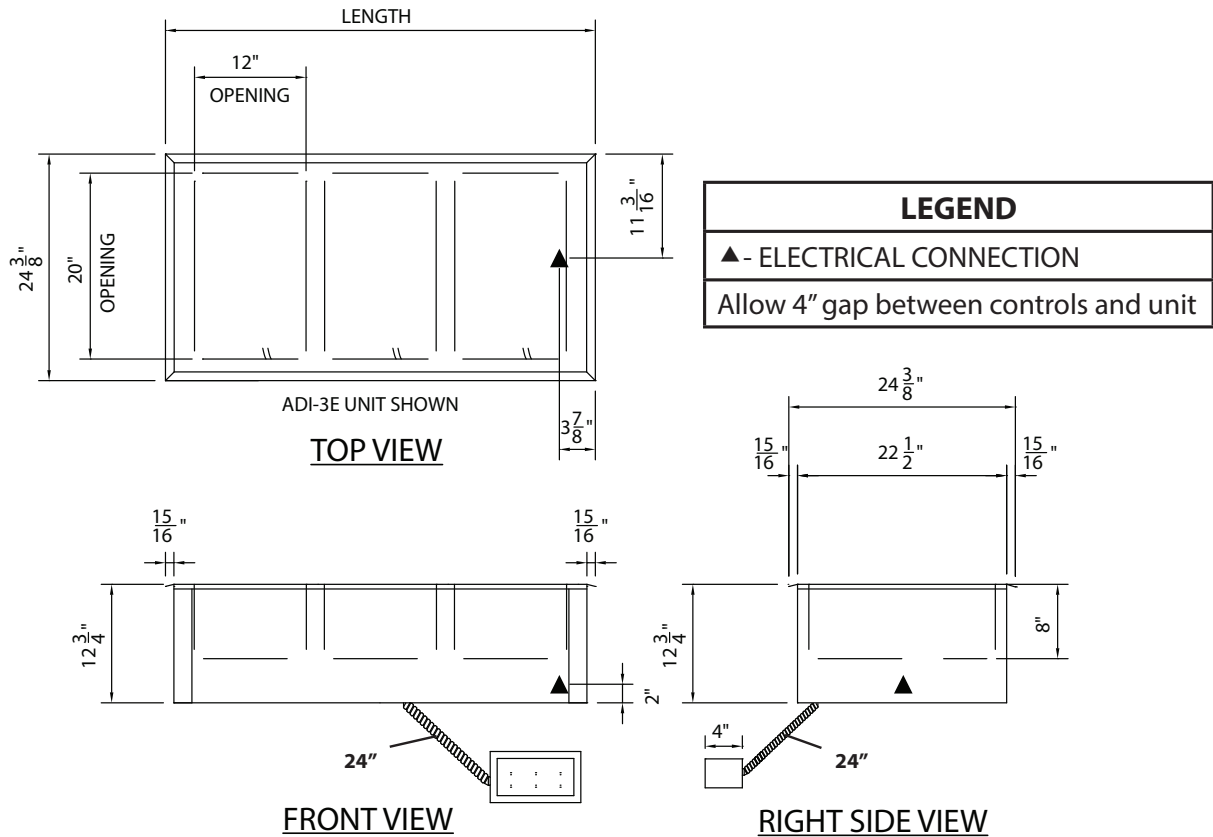
Catalog No. ADI-ELECHF

A.I.A. File No. 35-C-13

Specification subject to change

REV B 3/22/2019

HOT FOOD - DROP-INS - ELECTRIC



DIMENSIONS:

FREIGHT CLASS: 100

Model	Length		Width		Height		Top Openings	Cutout Length		Cutout Width		Control Panels	Cube ft. Crated	Weight	
	in	cm	in	cm	in	cm		in	cm	in	cm			lbs	kg
ADI-1E	18 1/4	46.4	24 1/4	61.6	12 3/4	32.4	1	17	43.2	23	58.4	1	8.2	43	19.6
ADI-2E	32 1/4	81.9	24 1/4	61.6	12 3/4	32.4	2	31	78.7	23	58.4	1	13.0	75	34.1
ADI-3E	46 1/4	117.5	24 1/4	61.6	12 3/4	32.4	3	45	114.3	23	58.4	1	17.7	90	40.9
ADI-4E	60 1/4	153.0	24 1/4	61.6	12 3/4	32.4	4	59	149.9	23	58.4	2	22.5	115	52.3
ADI-5E	74 1/4	188.6	24 1/4	61.6	12 3/4	32.4	5	73	185.4	23	58.4	2	27.2	140	63.6
ADI-6E	88 1/4	224.2	24 1/4	61.6	12 3/4	32.4	6	87	221.0	23	58.4	2	32.0	220	100.0

REMOTE CONTROL CUTOUT IS 9" X 4 3/8"

Model	120 Volt/500 Watt		208 Volt/750 Watt		240 Volt/750 Watt	
	watts	amps	watts	amps	watts	amps
ADI-1E	500	4.2	750	3.6	750	3.1
ADI-2E	1000	8.3	1500	7.2	1500	6.3
ADI-3E	1500	12.5	2250	10.8	2250	9.4
ADI-4E	2000	16.7	3000	14.4	3000	12.5
ADI-5E	2500	20.8	3750	18.0	3750	15.6
ADI-6E	n/a	n/a	4500	21.6	4500	18.8



Your Solutions Partner

Duke Manufacturing Co.
 2305 N. Broadway
 St. Louis, MO 63102

Phone: 314-231-1130
 Toll Free: 1-800-735-3853
 Fax: 314-231-5074

www.dukemfg.com