



a Standex company

ITEM: _____ PROJECT NAME: _____ DATE: _____

REFRIGERATED SELF-SERVE ISLAND MERCHANDISER

- MODEL** **IMSS60SC-2**
 IMSS60SC-3
 IMSS84SC-2
 IMSS84SC-3



Designed with impulse sales in mind. Get maximum return and increased profits with shop-around merchandising.

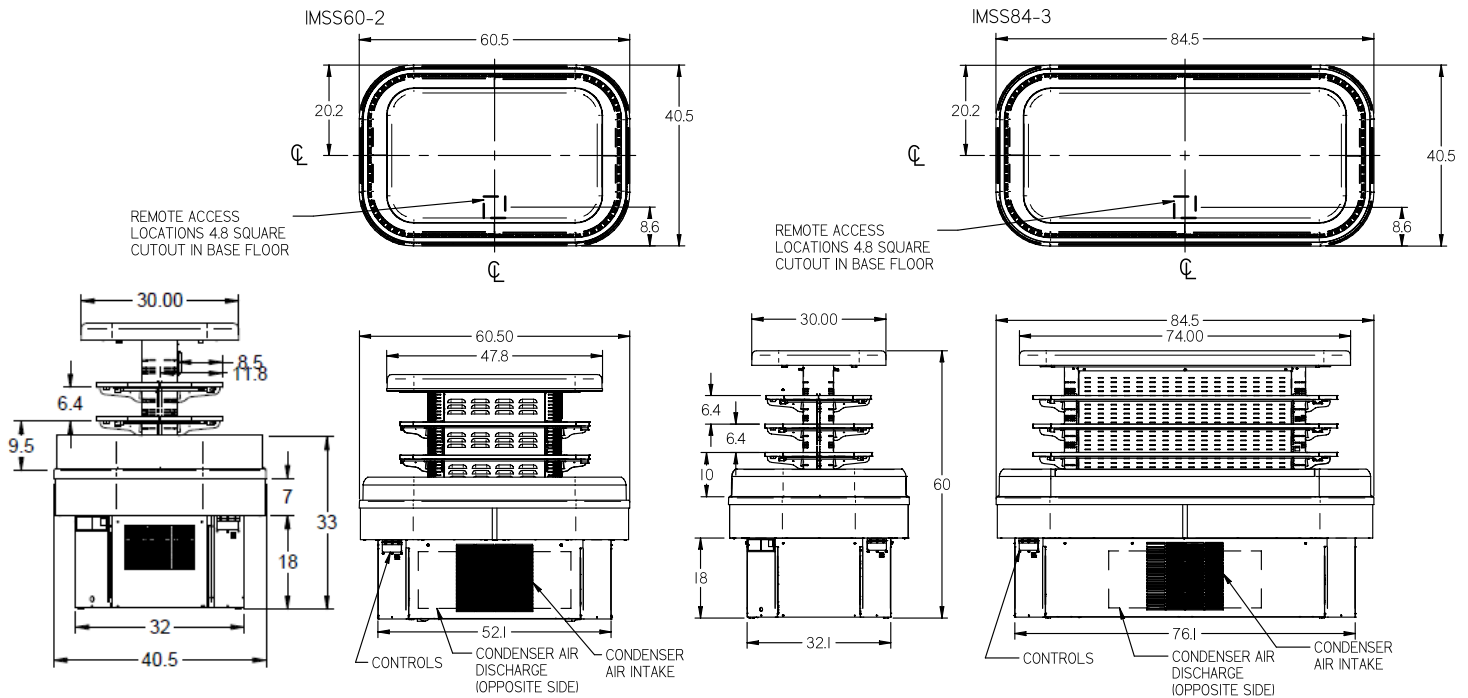
STANDARD FEATURES

- Adjustable black metal shelves, two or three tiers.
- LED top and undershelf lighting.
- Black metal base, interior and canopy. Choice of six standard laminates on exterior. Other color laminates are optional.
- Air deflector.
- Condensate evaporator provided for a totally self-contained system.
- Easy clean, rustproof insulated evaporator coil compartment.
- Easily accessible light switch and temperature control.
- Adjustable feet.
- Condensate pump provided on Models IMSS60SC-2 and IMSS84-2 and all remote models.
- Refrigeration controls maintain 38° - 40° F. Note: Case temperature will vary if the air curtain is disrupted.
- R404 Refrigerant.
- Insulated with high-density foam.
- Thermometer.
- UL Safety and UL Sanitation Listed to NSF Standard No. 7.

REFRIGERATED SELF-SERVE ISLAND MERCHANDISER

OPTIONAL ACCESSORIES:

- Special Color Laminated Exterior Finish
- Recessed Casters or Legs
- Cord and Plug (NEMA 6-20P)
- Remote Refrigeration
- Condensate Pump
- Cart Bumper
- Top-Mounted Electrical
- Condensate Evaporator Assembly (Field Install) (Separate 208-240V, 15A circuit required)(Part#40-19996)



SPECIFICATIONS:

| Model | Dimensions L W H | Shipping Weight (lbs) | Display Area (square feet) | Self-Contained with Condensate Pan 208-240/60/1 | Remote with Condensate Pan 208-240/60/1 |
|-------------------------------------|---------------------|-----------------------------|-------------------------------|---|---|
| <input type="checkbox"/> IMSS60SC-2 | 60" x 40" x 55" | 860 | 2 Tiers - 24.0 | 1 1/2 HP • 20 AMPS | 10 AMPS |
| <input type="checkbox"/> IMSS60SC-3 | 60" x 40" x 60" | 910 | 3 Tiers - 31.3 | 1 1/2 HP • 20 AMPS | 10 AMPS |
| <input type="checkbox"/> IMSS84SC-2 | 84" x 40" x 55" | 1,000 | 2 Tiers - 31.7 | 1 1/2 HP • 20 AMPS | 10 AMPS |
| <input type="checkbox"/> IMSS84SC-3 | 84" x 40" x 60" | 1,375 | 3 Tiers - 41.4 | 1 1/2 HP • 20 AMPS | 10 AMPS |

- **NOTE WHEN DIRECT WIRING THE CASE - A 25 AMP MINIMUM CIRCUIT IS REQUIRED ON THE IMSS60SC AND A 30 AMP MINIMUM CIRCUIT IS REQUIRED ON THE IMSS84SC.**
- Case temperature will vary if the air curtain is disrupted.
- Refrigerated cases are designed to operate in a maximum environment of 75°F ambient and 55% relative humidity.
- Due to continuing engineering improvements, specifications are subject to change without notice.



The Signature of Quality

FEDERAL INDUSTRIES
A Standex Company

215 FEDERAL AVENUE, BELLEVILLE, WISCONSIN 53508-9201
PHONE: 800-356-4206 **FAX: 608-424-3234**
EMAIL: geninfo@federalind.com **WEBSITE: www.federalind.com**

