



Your Solutions Partner

# Specifications

F.O.B. Sedalia, Missouri 65301



Model 316-25

Shown with optional food guard

### OPTIONS:

- Sliding doors w/compressor compartment
- Door locks
- Condensate evaporator
- Designer Foodshields
- Trayslides
- Adapter bars
- Adapter panels
- Stainless steel carving boards
- Wood carving boards
- Kick plates
- 5" casters, 2 swivel w/locks
- Die-stamped openings - 12" x 20" (Hot Food Style Top)
- Stainless steel dish shelf
- Drop brackets on tray slide
- False bottom - perforated, stainless
- 8" deep liner
- Veneered plastic laminate panels on body
- Special powder coat painted body
- Body latches

**Approval Stamp(s):**

### PRODUCT INFORMATION:

PROJECT: \_\_\_\_\_

ITEM: \_\_\_\_\_

QUANTITY: \_\_\_\_\_

### MODEL:

#### AeroServ Serving Systems

Cold Pan Units - Mechanically Assisted Ice

- 315-25 46" length unit/ 40" length pan
- 316-25 60" length unit/54" length pan
- 327-25 74" length unit/68" length pan

### TOP:

- 20 gauge, 300 Series stainless steel
- Cutout, flanged down & attached to liner of cold pan

### LINER:

- 18 gauge, 300 Series stainless steel - 5" deep, 19-7/8" wide
- Insulated on all four sides and bottom
- 1" cast brass drain and plug
- Condensing unit, refrigerant coil, controls, electric cord and plug - NEMA 5-15
- R448a Refrigerant

### BODY:

- Stainless Steel
- Paint grip
- Choice of available powder coat colors
- Flanged or channeled edges
- Welded together with local reinforcements
- Compressor compartment with removable louvered grille
- Mounted on 6" stainless steel legs with adjustable feet

### Certifications:



UL/ANSI NSF4

Specification subject to change



DUKE MANUFACTURING CO.

2305 N. Broadway

St. Louis, MO 63102

800.735.3853 Toll Free

314.231.5074 Fax

www.dukemfg.com

SS-1059 AeroServ Cold Pan Mecanically Assist Ice

REV C 09/25/2019

AEROSERV - SERVING SYSTEMS - COLD PAN UNITS - MECHANICALLY ASSISTED ICE

Catalog No. ASC-MECHCOLD

A.I.A. File No. 35-C-13

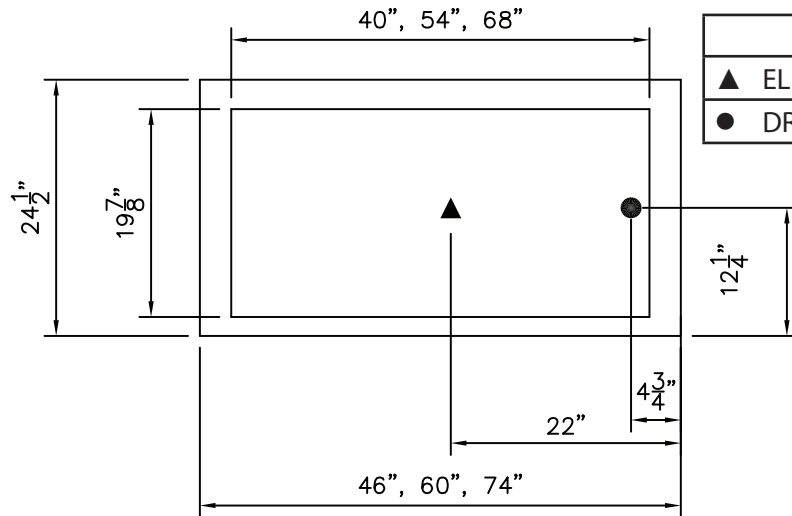
# AeroServ

## Cold Pan-Mechanically Assist Ice

A.I.A. File No. 35-C-13

Catalog No. ASC-MECHCOLD

AEROSERV - SERVING SYSTEMS - COLD PAN UNITS - MECHANICALLY ASSISTED ICE

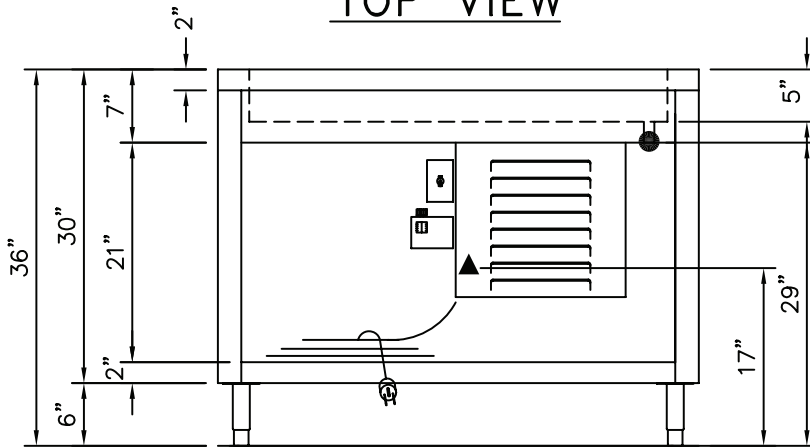


LEGEND	
▲	ELECTRIC CONNECTION POINT SINGLE PHASE
●	DRAIN LOCATION

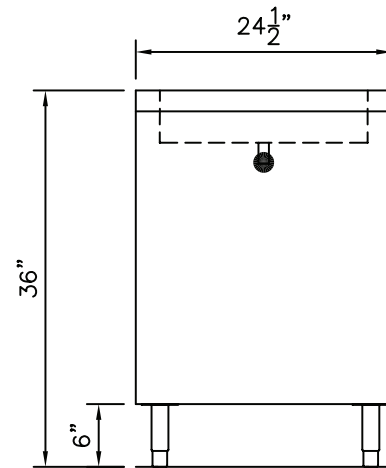
### ELECTRICAL SPECIFICATIONS

Model	120 Volt		HP
	Amps	NEMA	
315.25	5.15	5-15	1/4
316-25	5.15	5-15	1/4
327-25	5.15	5-15	1/4

TOP VIEW



FRONT VIEW



RIGHT SIDE VIEW

### DIMENSIONS:

Freight Class: 115

Model	Length		Cold Pan Length		Width		Height		Cube ft. crated	Weight	
	in	cm	in	cm	in	cm	in	cm		lbs	kg
315-25	46	116.8	40	101.6	24-1/2	62.2	36	91.4	37.7	220	100.0
316-25	60	152.4	54	137.2	24-1/2	62.2	36	91.4	47.9	284	129.1
327-25	74	188.0	68	172.1	24-1/2	62.2	36	91.4	57.1	349	158.6



**Duke Manufacturing Co.**  
2305 N. Broadway  
St. Louis, MO 63102

Phone: 314-231-1130  
Toll Free: 1-800-735-3853  
Fax: 314-231-5074

[www.dukemfg.com](http://www.dukemfg.com)

Printed in U.S.A  
© 2019, Duke Manufacturing Co.