

Tayogo[®]



Sports Waterproof MP3 Player

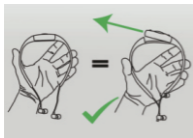


INSTRUCTION MANUAL

IMPORTANT

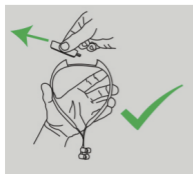
Tayogo[®]

Read before operation



(picture one)

To remove the main host of MP3 player from frame, squeeze frame gently to release MP3 player and remove with the other hand.



(picture two)

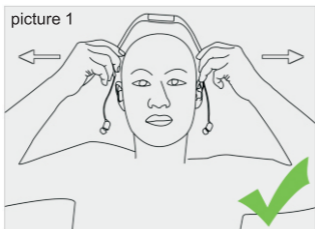
Plug out the main host of MP3 player in the direction of the picture two.



(picture three)

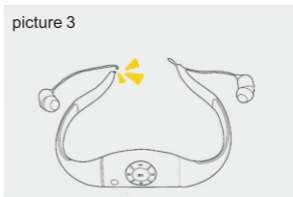
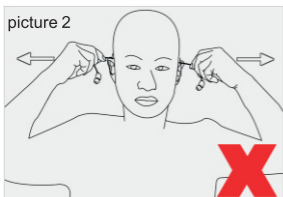
Never plug out as picture three. The wrong operation will cause the permanent damage to the main host of mp3 player.

Important: Wear and take off the mp3 player rightly



Right: Hold the ends of headphone bone to wear or take off.
See Picture 1.

Wrong: Hold the headphone cables and pull strongly to wear or take off.
See picture 2.



The copper wires of the headphone cables will be broken and
headphone no sound. See picture 3.

Note: The headphone cable is made by slim copper wires and it will be broken if you pull the cables strongly. This will cause the headphone no sound and this problem is out of warranty.

READ THIS MANUAL CAREFULL BEFORE USING THE MP3 PLAYER.

Congratulations on purchasing your new waterproof mp3 player. We are convinced you will be satisfied with it. To always guarantee the great performance of this item, we would like to ask the following:

Before using our product for the first time, carefully read the Safety guide, warranty and operating instructions and adhere to the safety precautions. All activities done with this item may only be carried out as described in these operating instructions. Improper use of this device may cause the user to make mistakes or decisions that could lead to serious injury or death.

**IMPORTANT:
SAFETY GUIDE:**

1. Do not use the mp3 player for purposes other than described in this manual. It can be potentially dangerous to use your mp3 player while engaging in other activities that require your full attention. You should exercise extreme caution or discontinue use in potentially hazardous situations.
2. Do not DISASSEMBLE or MODIFY the mp3 player in any way. Disassembly or modification will void the warranty.
3. Do not drop the mp3 player or apply excessive shock to the unit. Fire or electric shock may result due to using a damaged unit.
4. Do not place the mp3 player close to any heating device.
5. Do not use or store the mp3 player in places with high temperatures, fast temperature changes or strong magnetic fields.
6. To avoid accidents, DO NOT use the player while driving or operating other vehicles, this includes cars, motorcycles and bicycles. This is the law in some places. To avoid accidents, please do not listen to music at a high volume while walking, especially when crossing the street as well as in other potentially dangerous situations. Do not use the mp3 player in traffic areas during activities such as driving, jogging, riding a bicycle or any area where an accident could occur. If the user utilizes this unit at or near the water surface, the user must maintain safety awareness of moving water crafts. Always follow the law of the country where you reside. Many countries have laws prohibiting such actions. Obey local laws, be alert and listen carefully.
7. The manufacturer is not responsible for any data loss caused by the product defects, misuse or any other reason.
8. Do not listen to music to loud as it will damage your hearing and can cause permanent hearing loss, do not turn up the volume to block out noisy sounds around you. If you cannot hear the sound of another person speaking when sitting opposite you 1 meter away

then you are listening to the music too loud. Continuous use of earphone for many hours at high volumes may cause permanent hearing loss. In general the user must not listen to music too loud as this will also cause hearing loss. Listen to earphones at a comfortable level for reasonable periods of time. Hearing expert's advice against listening continuously loud and extended play. Always make sure that the mp3 player volume is turned down low before putting the earphones in your ears. If you put the earphones in your ears and then turn on the device, it may cause hearing loss due to a sudden burst of volume. Always set the volume level to a comfortable level for listening. Caution: the ear buds insert directly into the ear are not to be used during scuba diving. Prolonged exposure to pressures at depths below 1 meter may result in permanent hearing loss. Discontinue use at first sign of pain or hearing loss.

9. Please plug or unplug the mp3 player and earphone frame carefully as instructed. Failure to do so will result in damage to mp3 player.
10. When you plug the USB jack into a computer, make sure you are plugging in the correct end. If the USB jack is plugged in the wrong way, the computer or the device might be damaged.
11. DO NOT CONNECT THE MP3 PLAYER TO THE COMPUTER IF THE MP3 PLAYER IS WET. Doing so could result in permanent damage to the Computer and the Mp3 player, this could also result in the user receiving electric shocks or even dying. Do not leave the USB jack plugged into the computer while unattended.
12. Maintain and keep the USB connection of the mp3 player free of dirt.
13. When the mp3 player becomes dusty or dirty, wipe off with a soft cloth or clean towel.
14. Keep out of reach of children, the parts included with this product can represent a choking hazard. This product is not for children under 6 years of age.
15. Do not use chemicals or solvents to clean the device.

SPECIFICATIONS:

IPX8 Waterproof up to 3 meters (10 feet) under water

Supported Formats: MP3, WMA, DRM WMA, OGG, APE, FLAC, WAV, AAC-LC, ACELP, Audible

Internal Memory: 1-8GB (please check the exact memory size per your package)

System OS: Windows ME / 2000 / XP / Vista, Windows 7, Mac OS 9.X or higher

PC Interface: USB 2.0

Power: Built in 3.7V Li-Polymer Rechargeable Battery

Playback Time: Up to 5-10 hours

Dimensions (WxDxH): 12.5 x 12 x 3 CM

Weight: 32g (0.07 lbs) including rechargeable battery and head phones

Operating Temperature Range: 0°C – 80°C

Storage Temperature Range: 0°C – 80 °C

Accessories:

Extra ear buds, Instruction Manual, USB extension Cable

USE THE CORRECT EAR BUDS

The earphones use exceptionally high quality Japanese driver components in order to deliver such excellent sound. The earphones are delivered with five sets of ear buds for perfectly fitting all ear sizes. There are three sizes for land sports and two sizes for water sports. Make sure you use the correct type for water sport activities and fit them correctly to ensure that water does not enter the earphone channel.

Ear buds for normal usage



Small



medium



large

Ear buds for water sport activities



Medium



large

IMPORTANT READ THIS

To ensure a watertight fit, make sure the water sport ear buds are fitted correctly onto the earphones. Be sure to push the bud all the way back over the TWO ridges (A) and (B) until reaching position C. If water does enter the channel and covers the waterproof membranes the sound quality can be temporarily affected. Don't worry; allow the earphones to air dry and the sound quality will return to normal. For best results always insert the earphones snugly in your ears before entering the water and use the correct size ear bud. To ensure to get a snug fit in your ear, gently pull your ear backwards with one hand, while inserting the earphone with the other.



OPERATING INSTRUCTIONS:

The controls on the MP3 player are very easy to use. First of all familiarize yourself with the controls by looking at the buttons. Then place the MP3 player on your head, locate the central button (play/pause) and it is easy to adjust all the controls with one finger, volume up, volume down, jump forward, play/pause, on/off.



Power/Play/Pause:

Power ON: Press and hold 5 seconds, blue LED lights on, power is on. Wait about 10 seconds while the blue LED blinks, then the mp3 player automatically play the music if the player has music inside.

Power OFF: Press and hold 5 seconds while it is ON, the player will be powered OFF.

Play/Pause: while it is playing, press 1 time, it is Pause; while it is Pause, press 1 time, it is Play.



Volume+:

Press to increase Volume.



Volume-:

Press to decrease Volume. In MP3 playing mode, press to switch from shuffle playing (default) to order playing.



Forward:

Press to go to next song.



Backward:

Press to go to previous song.



Reset:

Press to reset the default setting. Sometimes, you need to use the pen point or similar tool to press and the reset can work. This is to avoid mis-use this button as power on.



LED indicator:

When the player is powered on, it is blue; when it is playing mp3, it blinks in blue; When it is charging, red led flash and blue led on after fully charged. When there is low power, it is red.

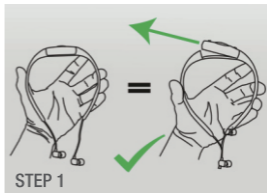
STEP 1:

The MP3 player is in the closed position when you buy it.

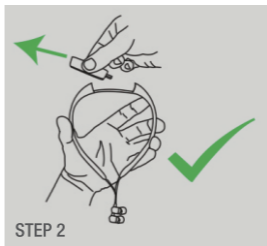
STEP 2:

To remove the MP3 player from frame gently squeeze frame gently to release MP3 player and remove with the other hand.

VERY IMPORTANT: BEND THE EARFRAME SO THAT THE MP3 PLAYER CAN EASILY SLIDE OUT PAST THE HEAD FRAME IN THE DIRECTION OF THE GREEN ARROW.



STEP 1



STEP 2

STEP 3:

Please plug into the mp3 player into the computer usb port. Please make sure it is the correct position as the picture shows. If the wrong position, the mp3 player cannot be found in your computer.

1. Connect the USB plug the correct way up to the computer USB socket.
2. or if using the USB cable, connect USB connector into the USB port of your computer.
3. The MP3 player will be displayed as "MP3 player" on "My Computer" in your PC. Charging will automatically begin. It will take up to 120-160 minutes to completely recharge a fully discharged battery, depending on your computer. The LED Status will flash red while charging. The mp3 player can also be recharged with the Optional AC Power Adapter (5V, 1A).



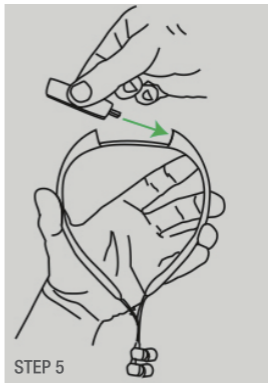
TEP3

STEP 4:

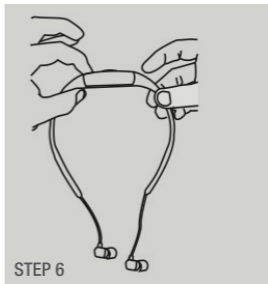
Download Music Files from your PC to your MP3 player

1. Connect the mp3 player to a USB port on your PC.
2. Click on "My Computer" and locate the MP3 tracks you want to download.
3. Select the desired track(s). Click once to select a single track. Shift-click or Ctrl-click to select multiple tracks and copy the files
4. Paste the copied files to the mp3 player drive.
The files will appear in the drive after you finish.

CAUTION: DO NOT DISCONNECT THE USB CABLE WHILE THE MP3 FILES ARE BEING DOWNLOADED. You can also use the mp3 player as a USB Storage Device, however you should always back up your music and data files.

**STEP 5:**

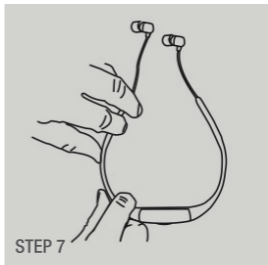
After downloading tracks and recharging the MP3 player hold the frame with one hand and place the MP3 player into the frame with the other hand.

**STEP 6:**

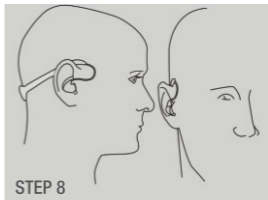
Click to lock the MP3 player into the frame and create waterproof seal (**WARNING:** be sure the contact points between the MP3 player and the USB socket are free of dirt, sand or any other debris otherwise it won't seal properly)

STEP 7:

The mp3 player has been designed to be fully adjustable to fit all heads comfortably. You may notice a “snug” fit the first time you use the MP3 player. This snug fit is important so that the MP3 player stays in place while performing active sports. However it may be necessary to bend open the earphone frame so that they are more comfortable. However do not over bend the frame as this could permanently damage it. Take your time to get the perfect fit. Use it, and then adjust it. The frame material is designed to mould to the shape of your head after use. This is the normal procedure.

**STEP 8:**

The frame will fit close to your head and the earphones fit snugly in the ears and lie flat against the ear. They should not stick out.



Questions and Answers:

1) Why I can not see the flash after plugging the computer port?

A: 1. Check if you plug the usb in right direction; please try the other usb port; make sure the 4 gold fingers connect well with the usb port.

2. Check if the usb plug dirty or not. Please clear if it is dirty.

3. If plug to the computer port, please use the extending cable to plug the back usb port. The front port of computer sometimes is not stable.

4. Press the RESET button and try again.

5. When you see "MP3 player" disk in my computer, you can copy your songs into it.

2) What to do if the playing has trouble or the buttons don't work?

A: Press the Reset button.

3) How to switch from shuffle to order playing?

A: The default playing is shuffle. In the mp3 playing mode, press and hold Volume -, it can go to order playing. The rules for order playing is: play first the song name as Number from small to big; then for the songs name with letters from A-Z.

4) Why the songs playing sometimes stops suddenly?

A: Please make sure the music files are fine. When the songs have virus or damaged, it will stop suddenly.

5) Will the mp3 player sink down to water?

A: NO. We use the super light and specialized material, it will float on the water.

6) Why the headset works well only in one side?

A: This is caused by the bad connection of the usb plug and the headphone bone. Please take out and plug again.

7) Why the outlooking of the headphone bone looks not so well?

A: We use the 2nd injection on the usb port parts of the headphone bone to make it works easily. The second injection parts will look a little different with the first injection body.

8) I have found the headphone with hole open, it is really waterproof?

A: We use the waterproof headphone speaker and other waterproof technology. This item works perfectly in water.

9) Can I bend the headphone bone after removing the usb player?

A: NO, this will damage the headphone bone permanently.

10) Can I use it as the USB Flash?

A: Sure, you can use it as the USB flash to store the files.

Note: Please don't plug out the player during files copying.

For more question, please go to check our website: www.tayogo.com or email us: sales@tayogo.com