

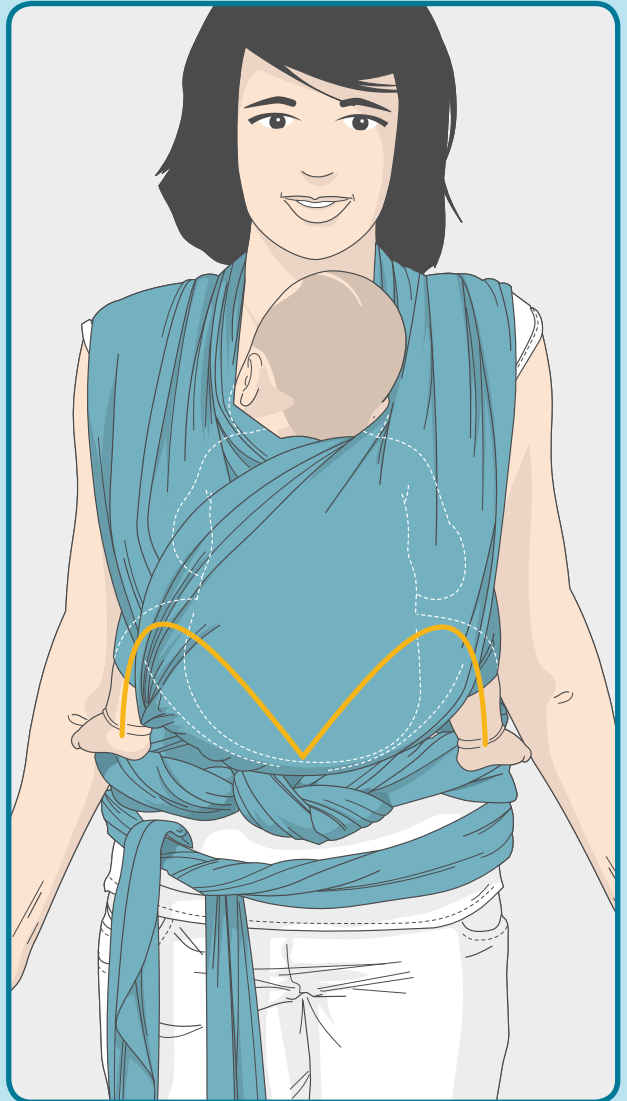


manduca®
sling
my baby sling/
mon écharpe porte-bébé

GEBRAUCHSANLEITUNG
INSTRUCTIONS FOR USE / MODE D'EMPLOI
INSTRUCCIONES DE USO / ISTRUZIONI
PER L'USO / GEBRUIKSAANWIJZING

- > ACHTUNG! FÜR SPÄTERES NACHSCHLAGEN AUFBEWAHREN!
- > IMPORTANT! KEEP FOR FUTURE REFERENCE!
- > AVERTISSEMENT! À CONSERVER POUR CONSULTATION ULTÉRIEURE!
- > ¡ATENCIÓN! ¡CONSERVE ESTAS INSTRUCCIONES DE USO PARA POSTERIORES CONSULTAS!
- > ATTENZIONE! CONSERVARE LE ISTRUZIONI PER L'USO PER POTERLE CONSULTARE ANCHE IN UN SECONDO MOMENTO!
- > LET OP! BEWAAR DE GEBRUIKSAANWIJZING VOOR LATERE RAADPLEGING!

WARNHINWEISE WARNING NOTICE AVERTISSEMENT



min/max

3,5/15 kg
7.7/33 lbs

ADVERTENCIAS AVVERTENZA WAARSCHUWINGEN

WARNUNG:

Dein Gleichgewicht kann durch deine Bewegung und die deines Kindes nachteilig beeinträchtigt werden.

WARNUNG:

Sei vorsichtig beim nach vorne Beugen oder Lehnen.

WARNUNG:

Diese Trage ist zur Anwendung bei sportlichen Aktivitäten nicht geeignet.

WARNING:

Your balance may be adversely affected by your movement and that of your child.

WARNING:

Be careful when bending or leaning forward.

WARNING:

This carrier is not suitable for use during sporting activities.

AVERTISSEMENT:

L'équilibre de la personne peut être affecté par tout mouvement qu'elle et l'enfant peuvent faire.

AVERTISSEMENT:

Ne se pencher en avant qu'avec précaution.

AVERTISSEMENT:

Le porte-enfant n'est pas adapté aux activités sportives.

ADVERTENCIA:

Tu equilibrio puede verse afectado negativamente por tu movimiento y el del niño.

ADVERTENCIA:

Ten cuidado al inclinarte hacia delante o recostarte.

ADVERTENCIA:

Este portabebés no es apto para su uso en actividades deportivas.

AVVISO:

Il tuo equilibrio può essere compromesso dai movimenti tuoi o del bambino.

AVVISO:

Devi sempre piegarti o appoggiarti in avanti con cautela.

AVVISO:

Questo marsupio non si presta ad essere indossato mentre pratichi attività sportive.

WAARSCHUWING:

Je evenwicht kan door je eigen bewegingen en die van je kindje nadelig worden beïnvloed.

WAARSCHUWING:

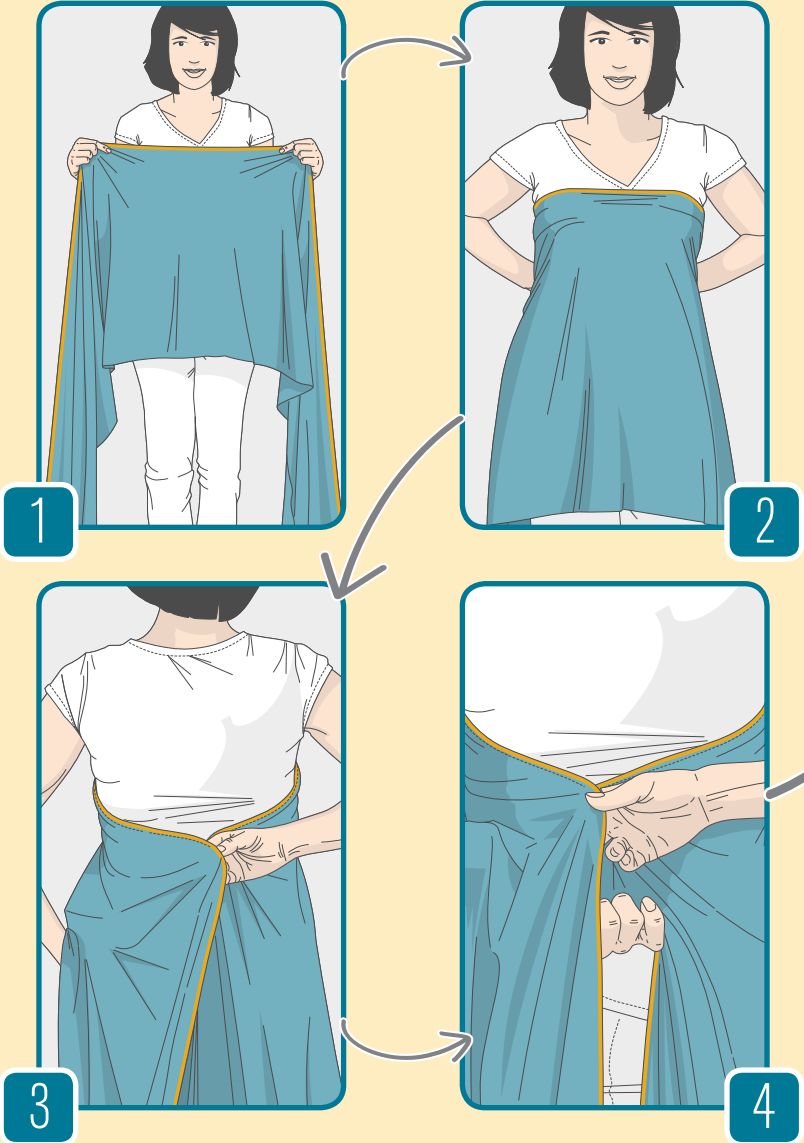
Wees voorzichtig tijdens het naar voren buigen of leunen.

WAARSCHUWING:

Deze draagzak is ongeschikt voor gebruik tijdens sportieve activiteiten.

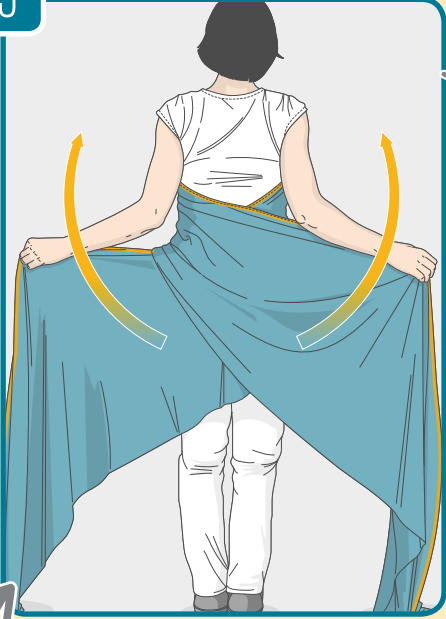


WICKELKREUZTRAGE WRAP AROUND FRONT CARRY ANUDADO CRUZ ENVUELTA MARSUPIO VENTRALE



PORTAGE CROISÉ VERTICAL INCROCIATO RECHTOP GEKRUISD DRAGEN

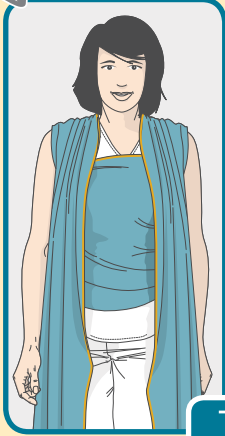
5



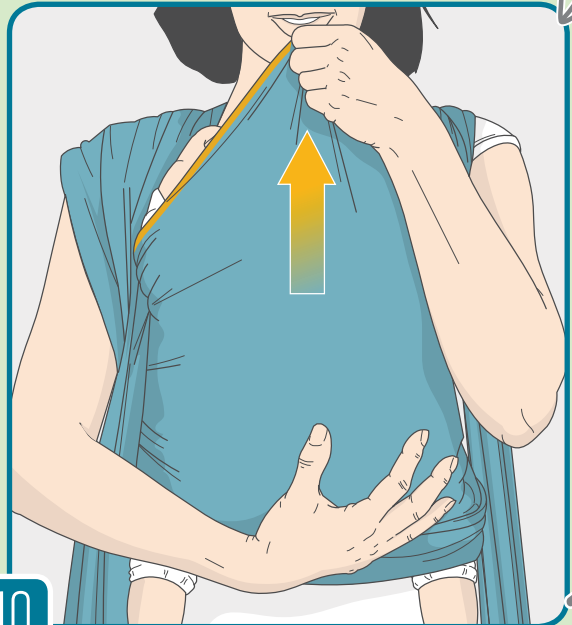
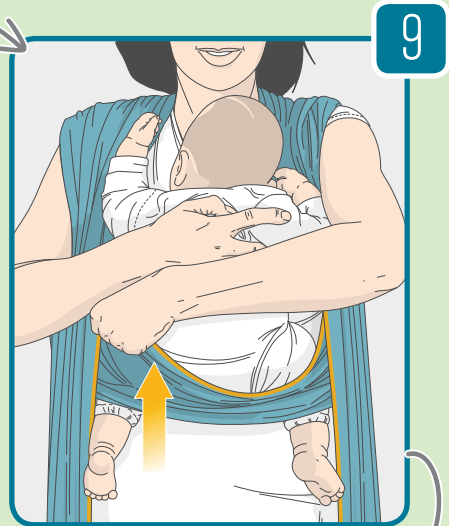
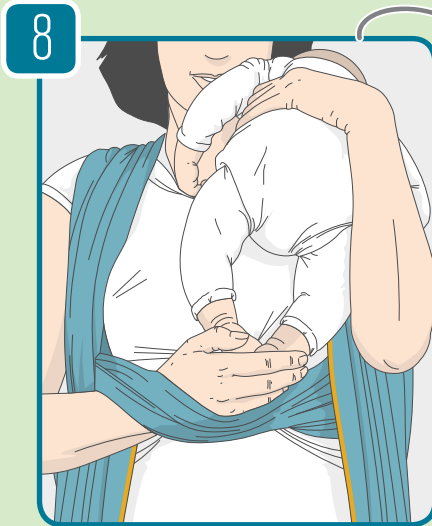
6



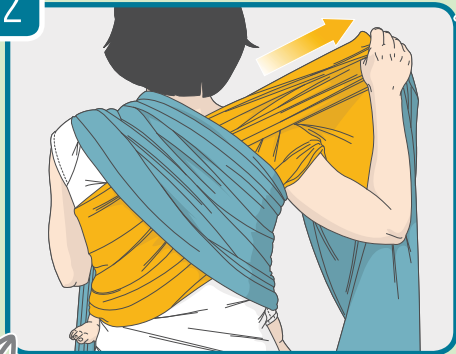
7



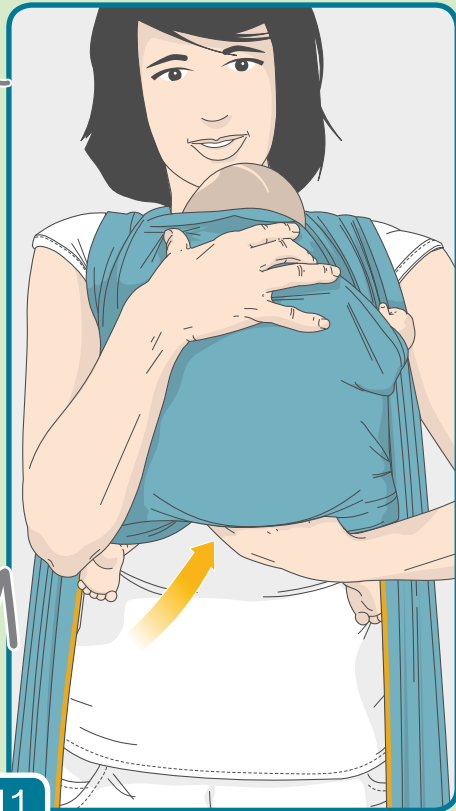
WICKELKREUZTRAGE WRAP AROUND FRONT CARRY PORTAGE CROISÉ VERTICAL
ANUDADO CRUZ ENVUELTA MARSUPIO VENTRALE INCROCIATO RECHTOP GEKRUISD DRAGEN



12



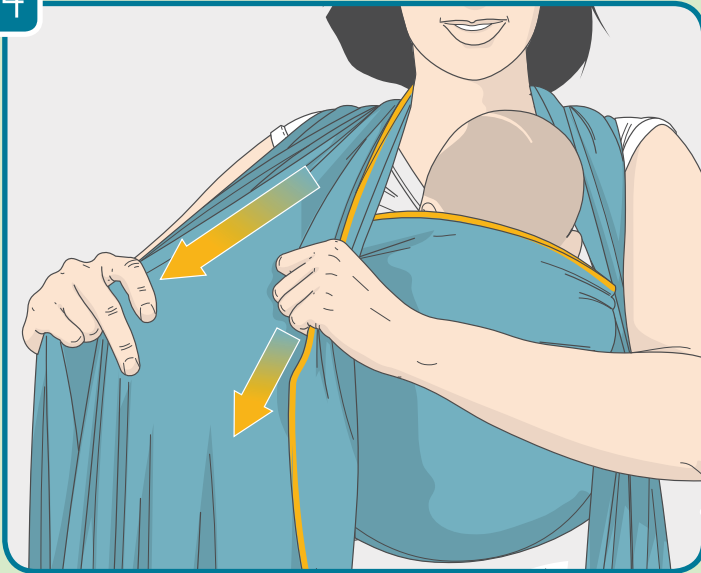
13



11

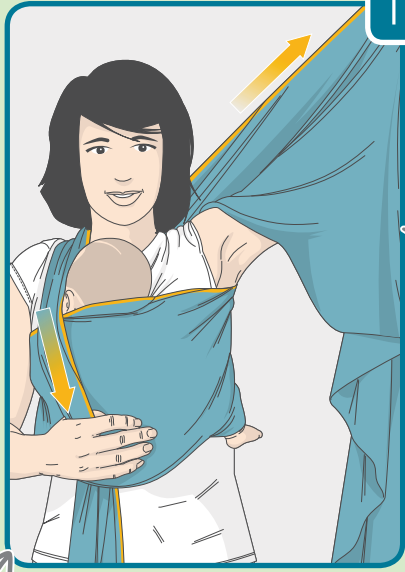
WICKELKREUZTRAGE WRAP AROUND FRONT CARRY PORTAGE CROISÉ VERTICAL
ANUDADO CRUZ ENVUELTA MARSUPIO VENTRALE INCROCIATO RECHTOP GEKRUISD DRAGEN

14

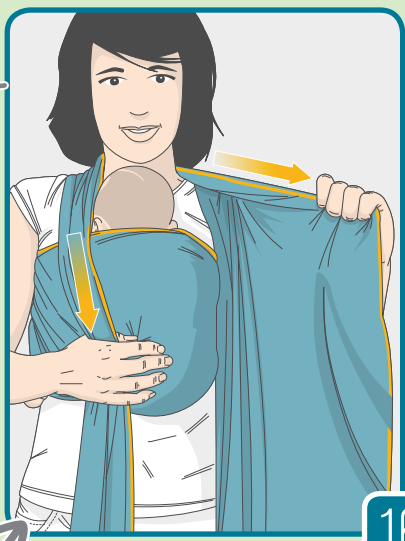


15

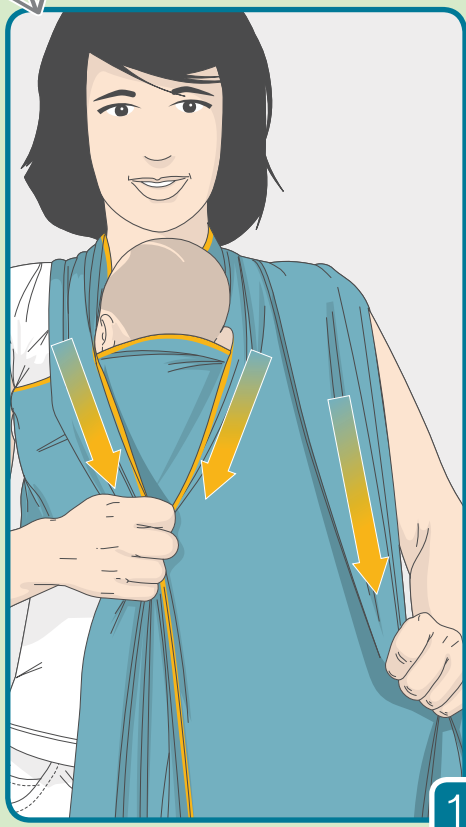
17



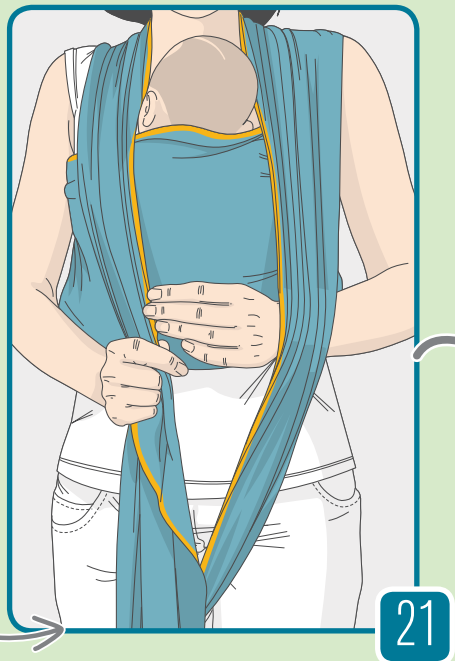
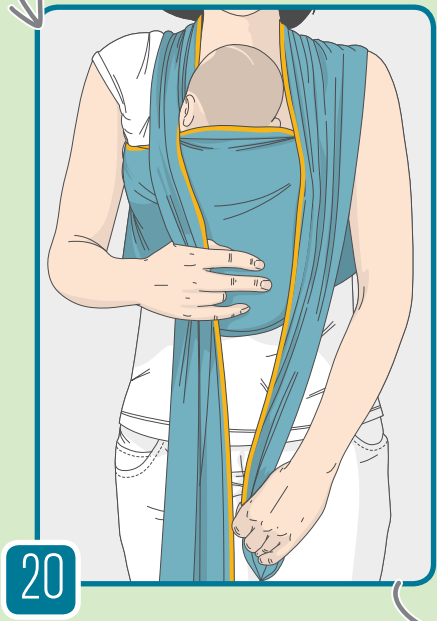
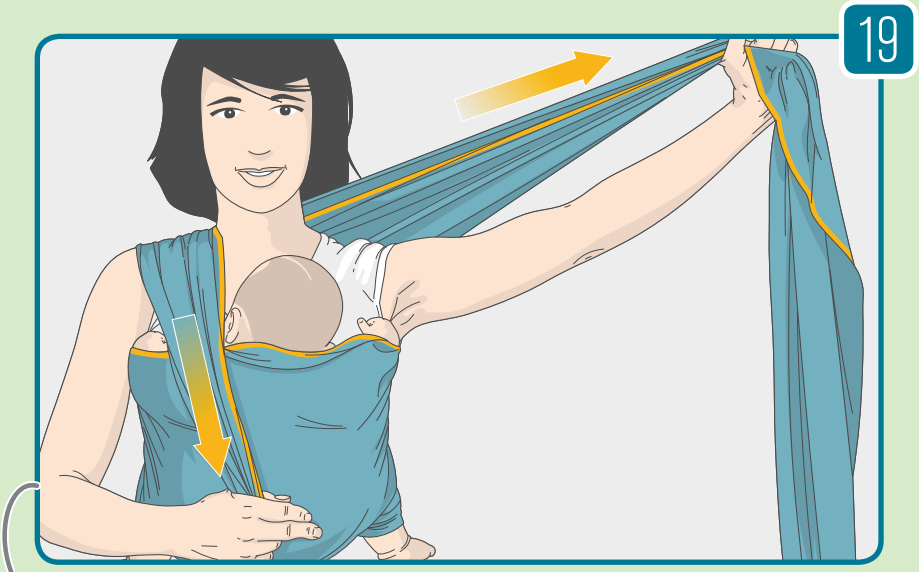
16



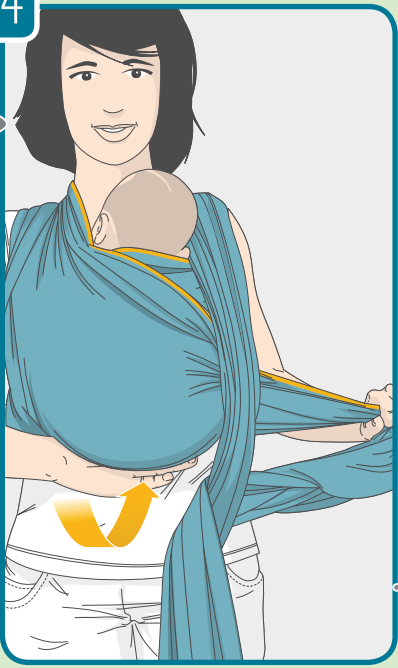
18



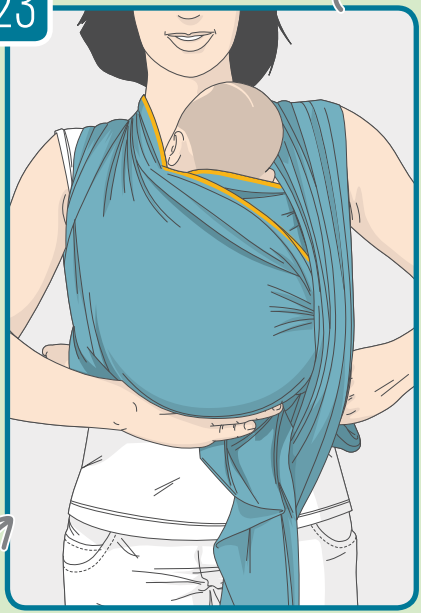
WICKELKREUZTRAGE WRAP AROUND FRONT CARRY PORTAGE CROISÉ VERTICAL
ANUDADO CRUZ ENVUELTA MARSUPIO VENTRALE INCROCIATO RECHTOP GEKRUISD DRAGEN



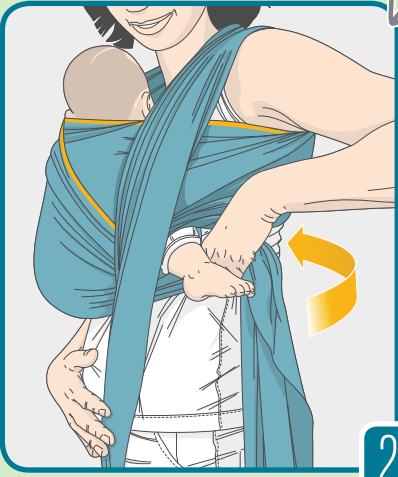
24



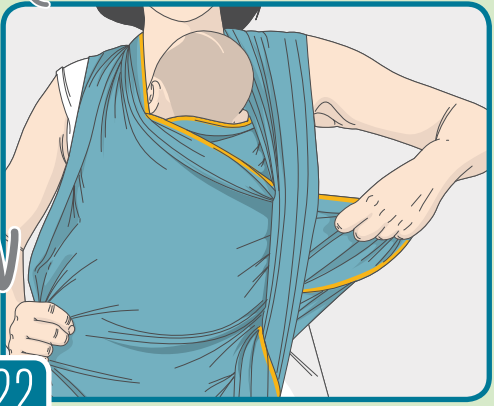
23



25

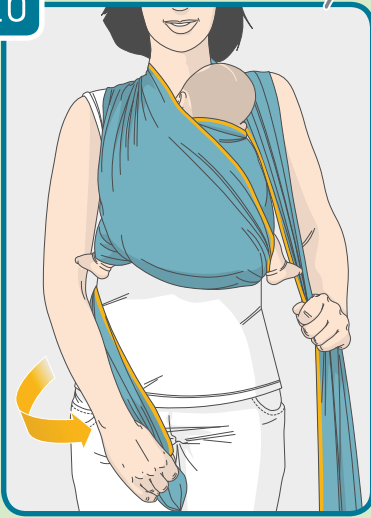


22



WICKELKREUZTRAGE WRAP AROUND FRONT CARRY PORTAGE CROISÉ VERTICAL
ANUDADO CRUZ ENVUELTA MARSUPIO VENTRALE INCROCIATO RECHTOP GEKRUISD DRAGEN

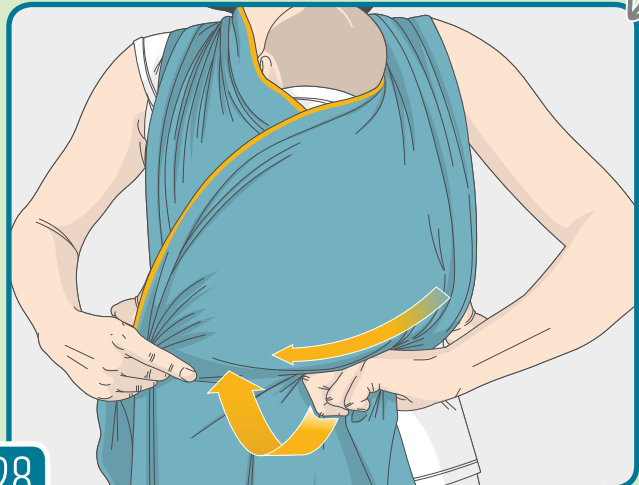
26

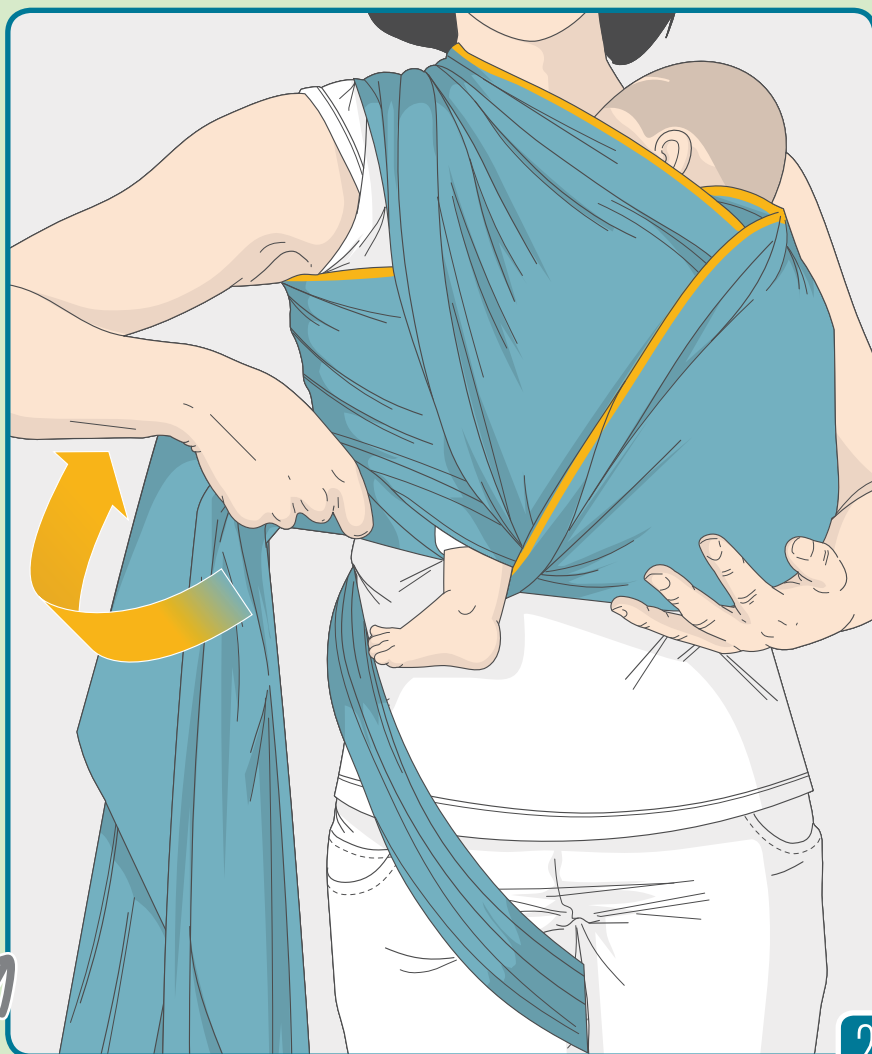


27



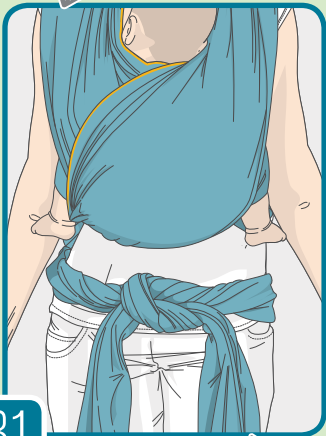
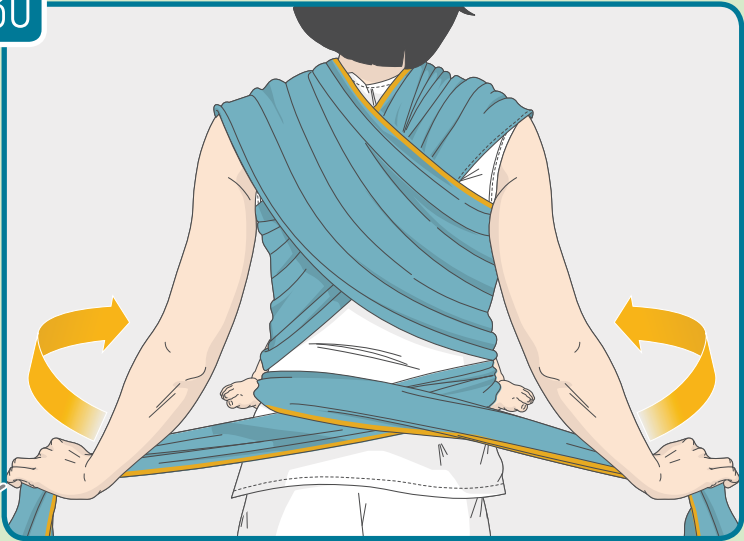
28



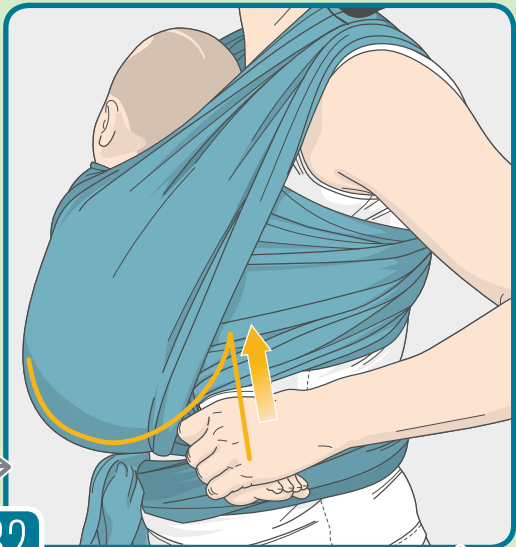


WICKELKREUZTRAGE WRAP AROUND FRONT CARRY PORTAGE CROISÉ VERTICAL
ANUDADO CRUZ ENVUELTA MARSUPIO VENTRALE INCROCIATO RECHTOP GEKRUISD DRAGEN

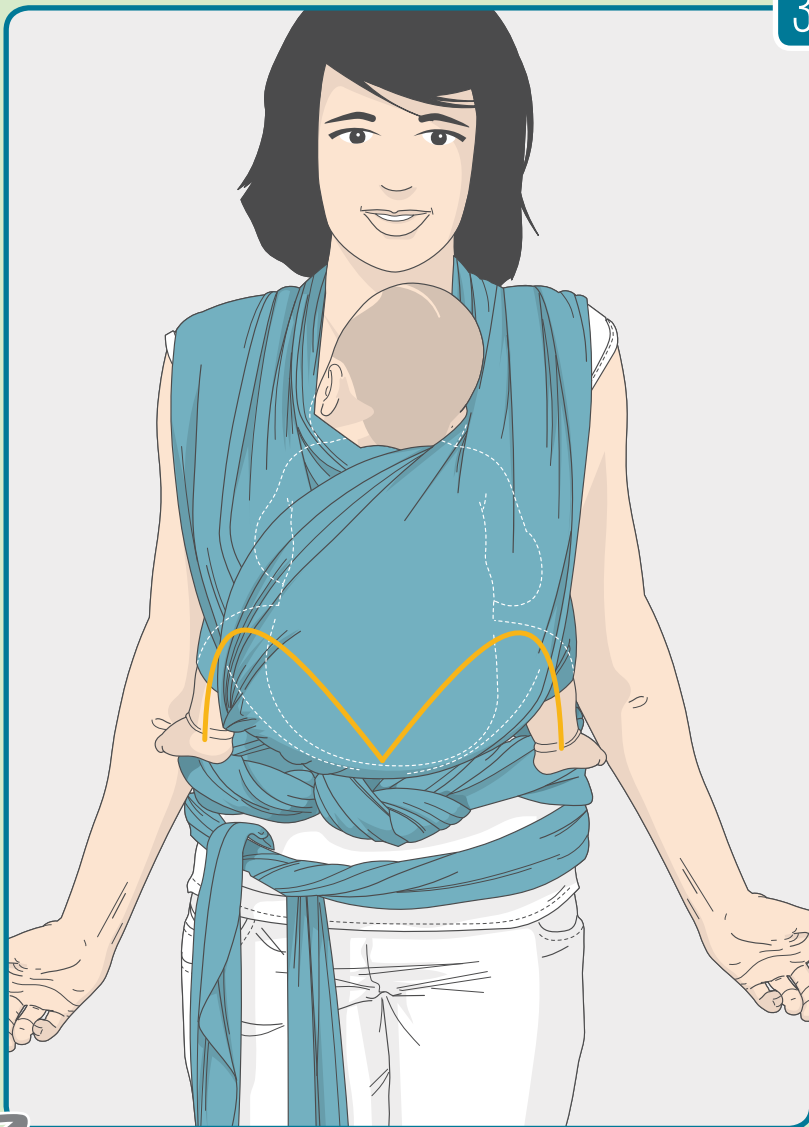
30



31



32



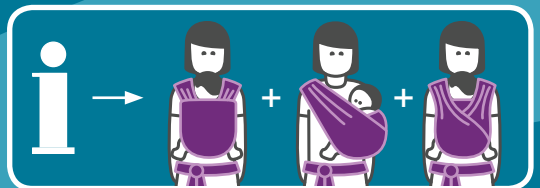


manduca®

Design and Distribution:

Wickelkinder GmbH
Zelterstraße 1
D-35043 Marburg

Tel. +49 (0)6424 928690
info@wickelkinder.de
www.wickelkinder.de



www.manduca.de

copyrighted material – not for reprint and further distribution